

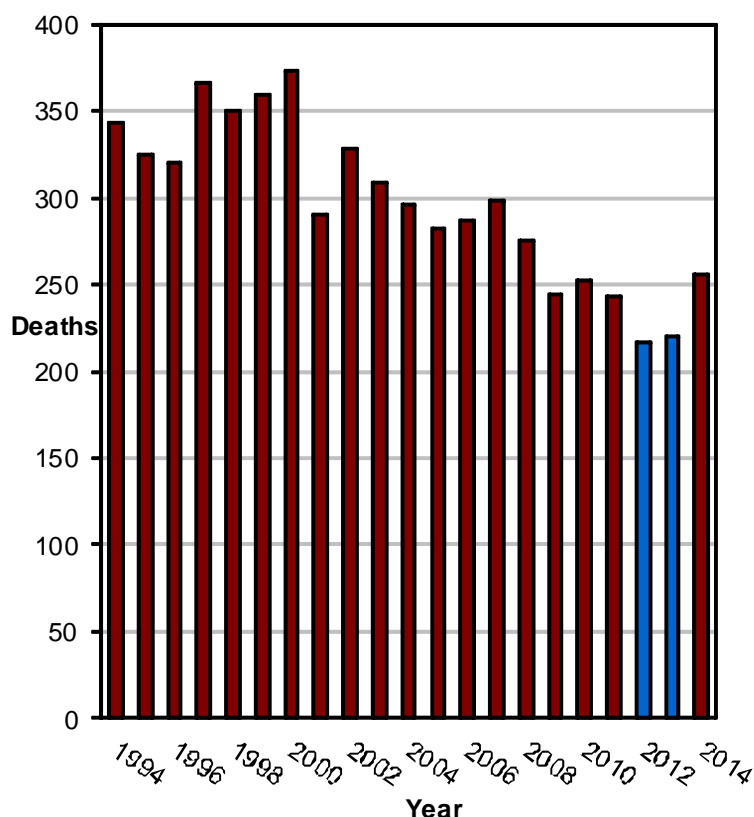
Did you know in 2014:

- 54,036 motor vehicle crashes occurred in Utah which resulted in 23,364 injured persons and 256 deaths.
- The Utah death rate per mile traveled was lower than the U.S. rate.
- A motor vehicle crash occurred in Utah every 9 minutes, a person was injured in a crash every 22 minutes, and a person died in a crash every 34 hours.

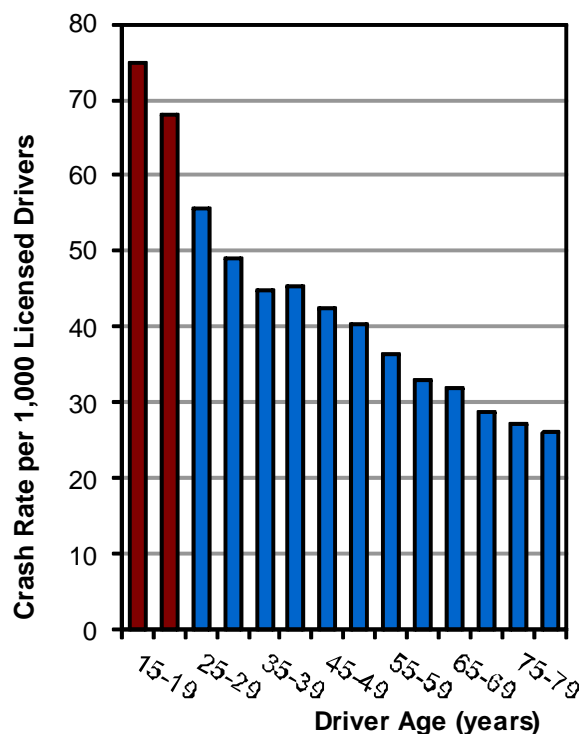
Overview



Deaths by Year (Utah 1994-2014)



Crash Rates per Licensed Drivers by Age (Utah 2014)



- 2012 had the lowest deaths in Utah since 1959.

- Drivers aged 15-24 years had the highest crash rates per licensed driver.

Crash Summary (Utah 2014)

Leading Causes of All Crashes

1. Followed Too Closely (21%)
2. Failed to Yield (18%)
3. Speed (15%)
4. Failed to Keep in Proper Lane (12%)
5. Distracted Driving (11%)

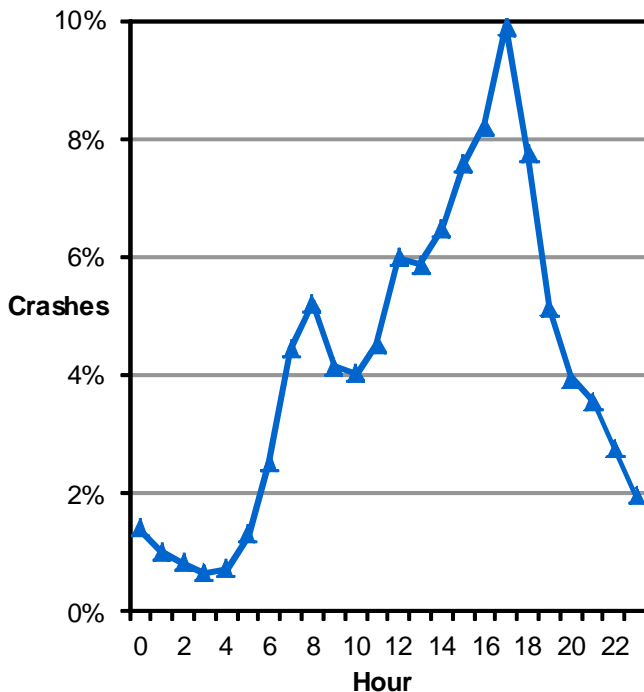
Leading Causes of Death

1. Speed (43%)
2. Unrestrained Occupants (28%)
3. Failed to Keep in Proper Lane (20%)
4. Drunk Driving (18%)
5. Failed to Yield (12%)

Overview



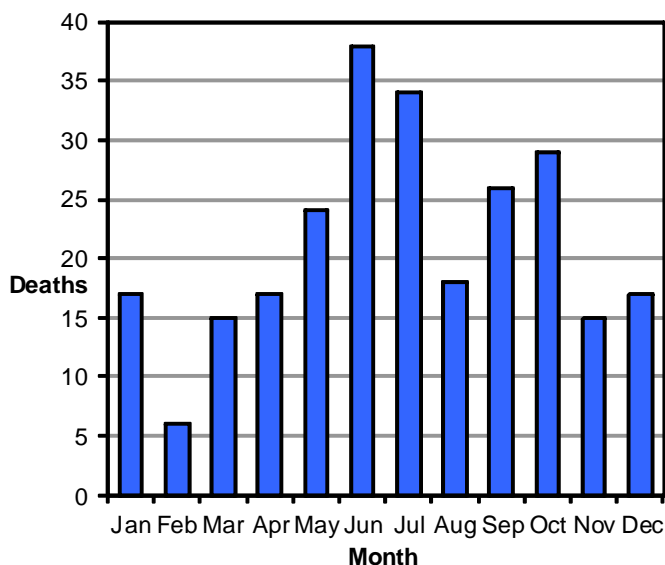
Motor Vehicle Crashes by Hour (Utah 2014)



- Crashes were highest between 3:00 p.m. and 6:59 p.m.

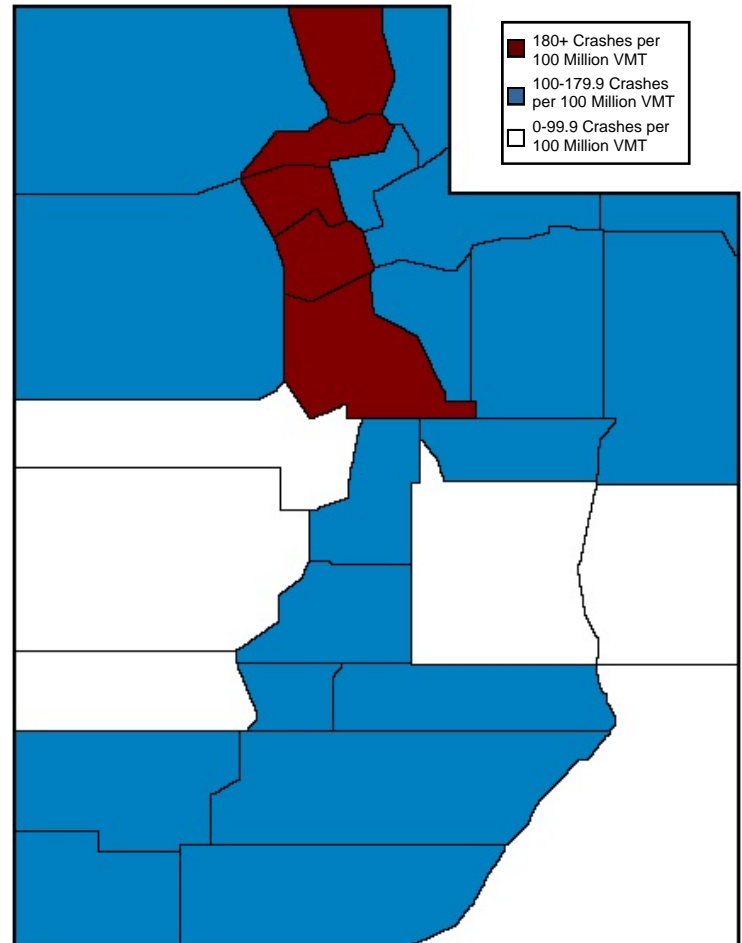
Motorcyclist deaths in 2014 were the highest on record. Pedestrian deaths in 2014 were the highest since 1999.

Deaths by Month (Utah 2014)



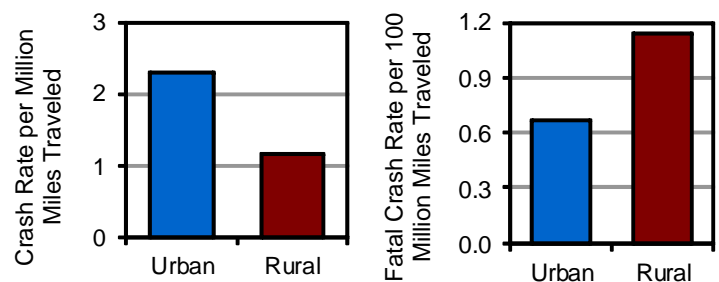
- June had the most deaths.

County Crash Rates by Miles Traveled (Utah 2014)



- Salt Lake, Weber, and Cache Counties had the highest crash rates per miles traveled.

Urban/Rural Location (Utah 2014)



- Urban areas had a higher rate of total crashes per vehicle mile traveled while rural areas had a higher fatal crash rate.
- Rural crashes were 3.4 times more likely to be fatal than urban crashes.