

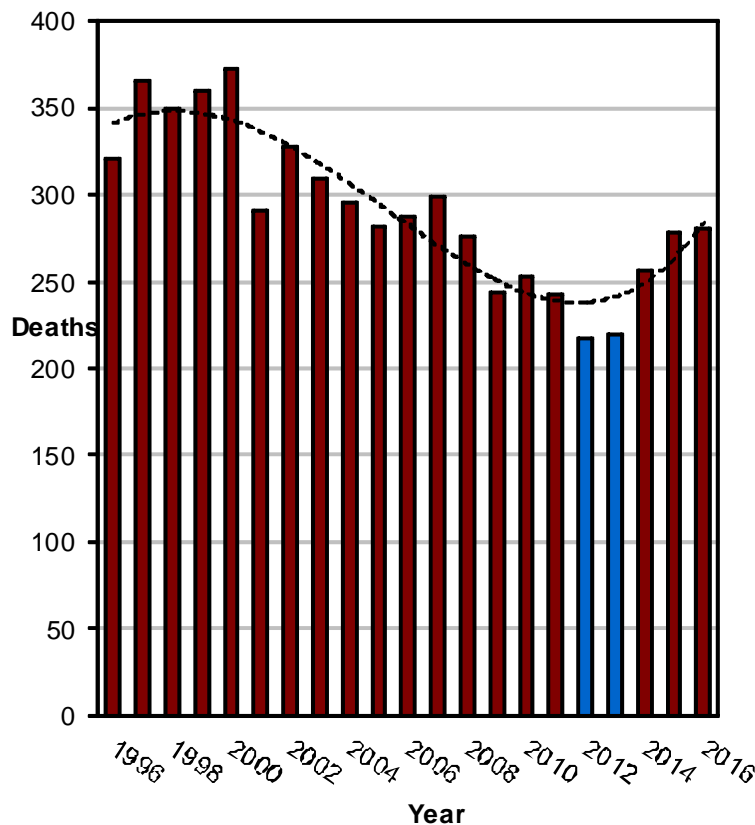
## Overview



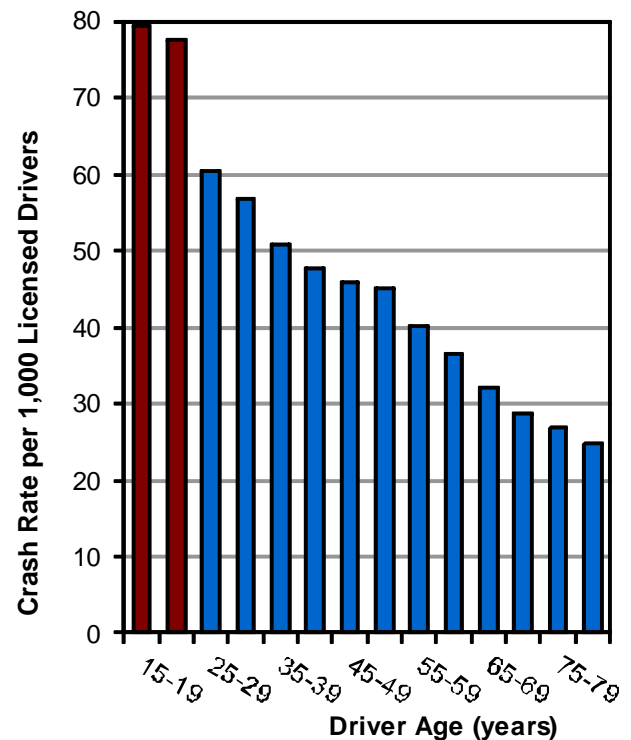
### Did you know in 2016:

- 62,471 motor vehicle crashes occurred in Utah which resulted in 26,738 injured persons and 281 deaths.
- The Utah death rate per mile traveled was lower than the U.S. rate.
- A motor vehicle crash occurred in Utah every 8 minutes, a person was injured in a crash every 19 minutes, and a person died in a crash every 31 hours.

### Deaths by Year (Utah 1996-2016)



### Crash Rates per Licensed Drivers by Age (Utah 2016)



- Traffic crash deaths increased for the 4th straight year.

- Drivers aged 15-24 years had the highest crash rates per licensed driver.

### Crash Summary (Utah 2016)

#### Leading Causes of All Crashes

1. Followed Too Closely (24%)
2. Failed to Yield (20%)
3. Speed (15%)
4. Failed to Keep in Proper Lane (13%)
5. Distracted Driving (9%)

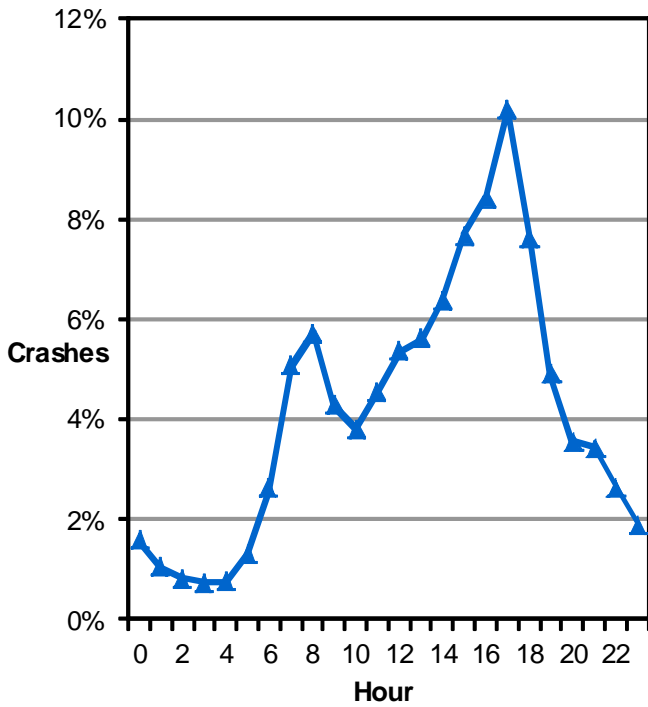
#### Leading Causes of Death

1. Speed (37%)
2. Unrestrained Occupants (28%)
3. Failed to Yield (16%)
4. Drunk Driving (13%)
5. Overcorrected (11%)

# Overview



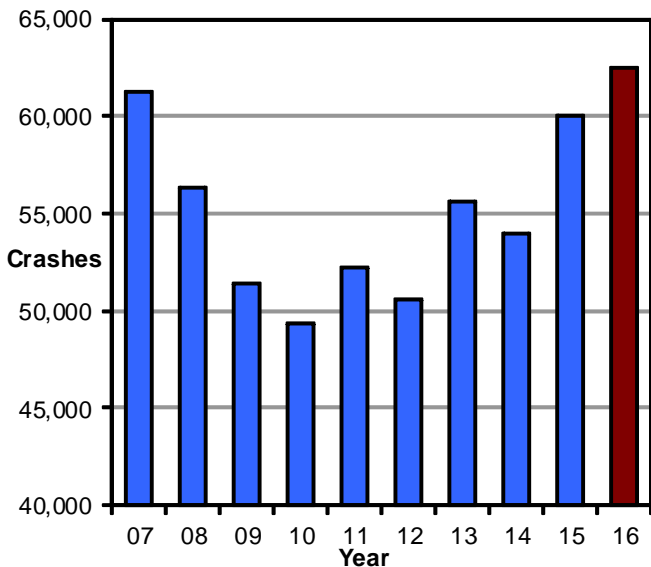
## Motor Vehicle Crashes by Hour (Utah 2016)



- Crashes were highest between 3:00 p.m. and 6:59 p.m.

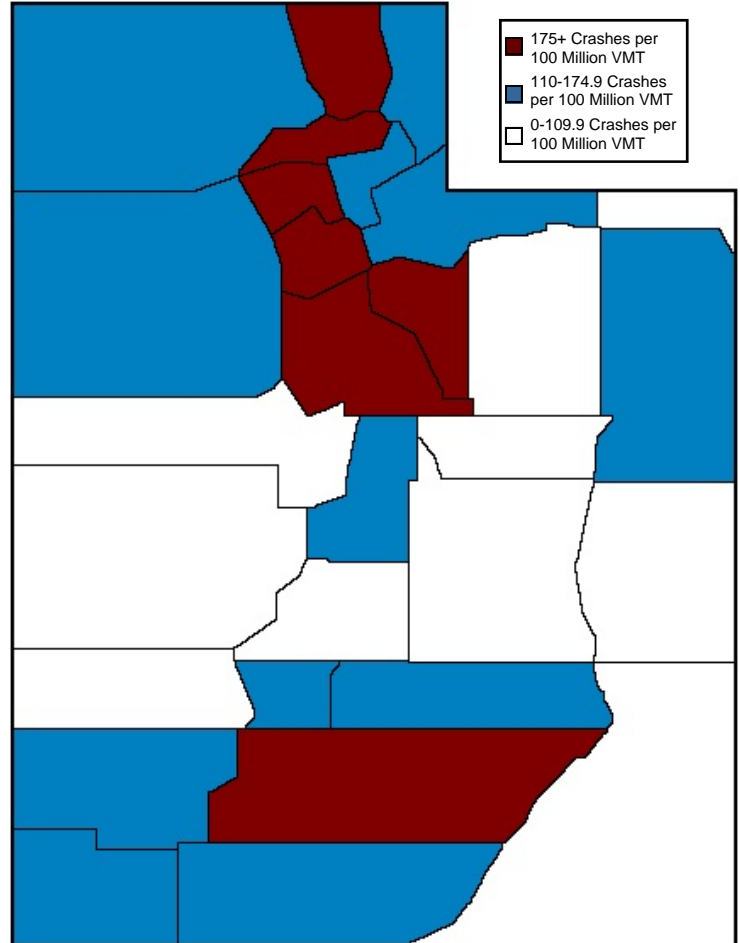
**Traffic crashes in 2016 were the highest ever in Utah. Traffic deaths were the highest in Utah since 2007.**

## Traffic Crashes by Year (Utah 2007-2016)



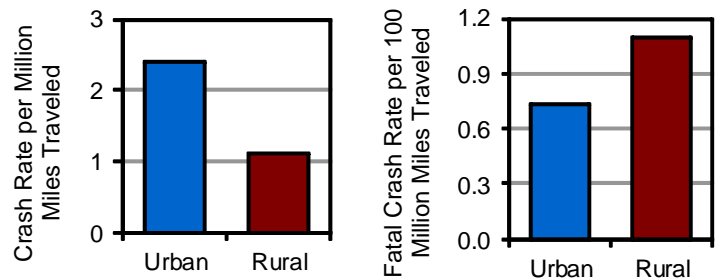
- 2016 saw an all time high for traffic crashes.

## County Crash Rates by Miles Traveled (Utah 2016)



- Salt Lake, Weber, and Cache Counties had the highest crash rates per miles traveled.

## Urban/Rural Location (Utah 2016)



- Urban areas had a higher rate of total crashes per vehicle mile traveled while rural areas had a higher fatal crash rate.
- Rural crashes were 3.2 times more likely to be fatal than urban crashes.