

# Senior (Age 65+) Drivers



2

## Section 7: Senior (Age 65+) Drivers

0

<u>Trends</u>	
Senior Driver Crashes 2002-2011 .....	96
<u>Counties</u>	
Senior Driver Crashes by County .....	97
<u>Drivers</u>	
Gender.....	98
Driver Age.....	98
Crash Rate of Licensed Drivers by Age.....	99
<u>Crash Conditions</u>	
Crash Severity .....	99
Month.....	100
Day of Week .....	100
Hour.....	101
Contributing Factors .....	102

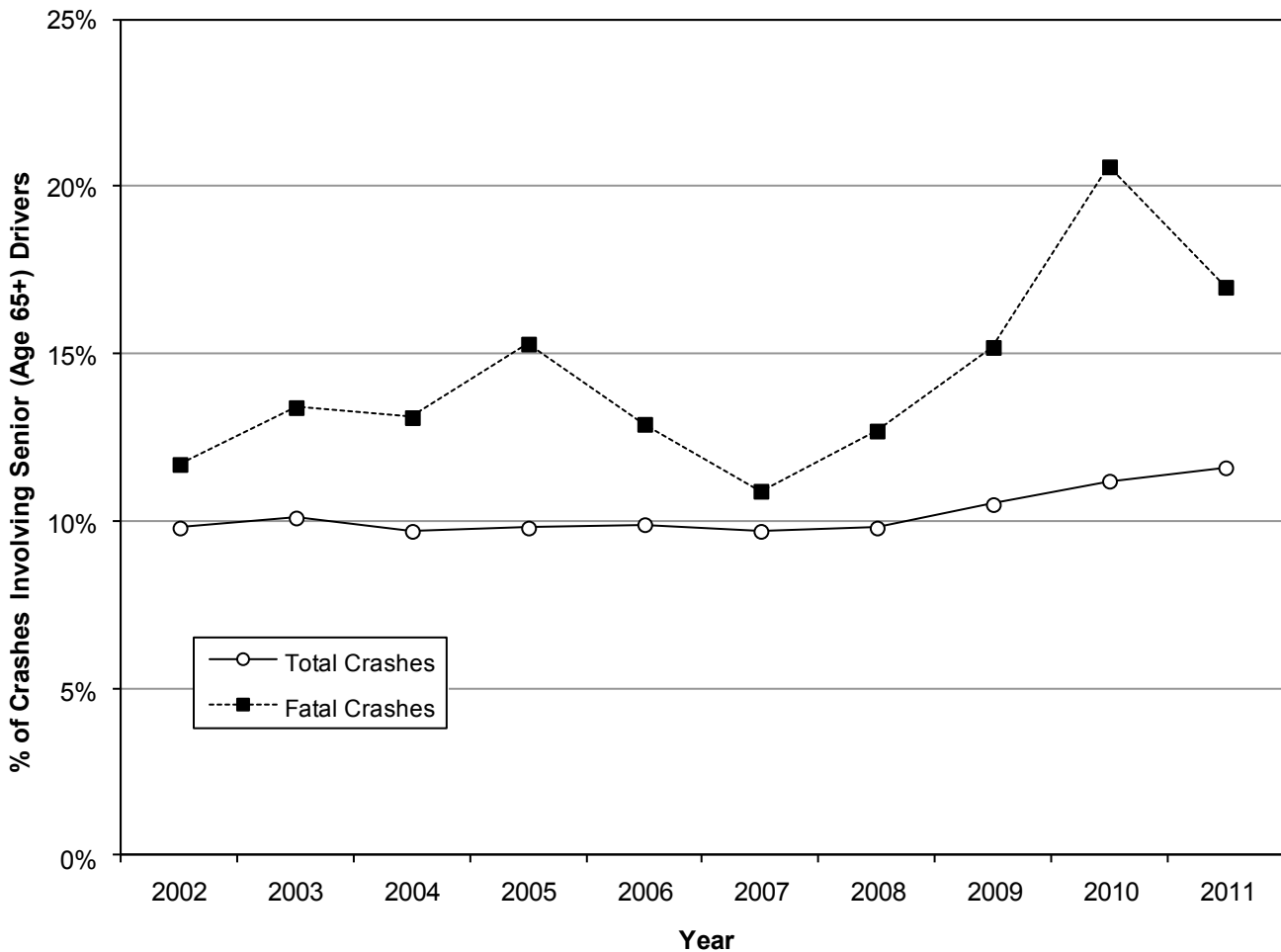
1

1

# Trends

## Senior Driver Crashes (Utah 2002-2011)

Senior (Age 65+) Driver Crashes												
Year	Property Damage Only			Injury			Fatal			Total		
	All #	Senior Driver #	%	All #	Senior Driver #	%	All #	Senior Driver #	%	All #	Senior Driver #	%
2002	33,542	3,126	9.3%	19,552	2,082	10.6%	274	32	11.7%	53,368	5,240	9.8%
2003	31,842	3,073	9.7%	18,285	1,982	10.8%	262	35	13.4%	50,389	5,090	10.1%
2004	34,222	3,170	9.3%	19,423	2,011	10.4%	260	34	13.1%	53,905	5,215	9.7%
2005	35,158	3,344	9.5%	19,545	2,024	10.4%	235	36	15.3%	54,938	5,404	9.8%
2006	37,674	3,508	9.3%	18,264	2,010	11.0%	249	32	12.9%	56,187	5,550	9.9%
2007	42,368	3,937	9.3%	18,619	1,991	10.7%	258	28	10.9%	61,245	5,956	9.7%
2008	38,997	3,620	9.3%	17,125	1,872	10.9%	245	31	12.7%	56,367	5,523	9.8%
2009	35,398	3,552	10.0%	15,752	1,834	11.6%	217	33	15.2%	51,367	5,419	10.5%
2010	34,155	3,658	10.7%	14,995	1,830	12.2%	218	45	20.6%	49,368	5,533	11.2%
2011	36,418	4,108	11.3%	15,645	1,914	12.2%	224	38	17.0%	52,287	6,060	11.6%
<b>Total</b>	<b>359,774</b>	<b>35,096</b>	<b>9.8%</b>	<b>177,205</b>	<b>19,550</b>	<b>11.0%</b>	<b>2,442</b>	<b>344</b>	<b>14.1%</b>	<b>539,421</b>	<b>54,990</b>	<b>10.2%</b>



- Senior drivers (aged 65+ years) are a special concern because of their declining health and fragility.
- The 10-year trend shows that 10.2% of all crashes in Utah involved a senior driver with an increasing trend over the last 10 years.
- Fatal senior driver crashes have fluctuated around the 10-year average of 14.1% of fatal crashes.

## Counties

## Senior Driver Crashes by County (Utah 2011)

Senior (Age 65+) Driver Crashes												
County	PDO Crashes			Injury Crashes			Fatal Crashes			Total		
	All	Senior Driver		All	Senior Driver		All	Senior Driver		All	Senior Driver	
	#	#	%	#	#	%	#	#	%	#	#	%
Garfield	96	17	17.7%	48	13	27.1%	3	0	0.0%	147	30	20.4%
Washington	1,095	230	21.0%	664	122	18.4%	9	2	22.2%	1,768	354	20.0%
Kane	146	21	14.4%	57	13	22.8%	3	1	33.3%	206	35	17.0%
Carbon	467	69	14.8%	92	13	14.1%	7	0	0.0%	566	82	14.5%
Weber	2,557	341	13.3%	1,271	208	16.4%	21	5	23.8%	3,849	554	14.4%
Juab	244	31	12.7%	92	15	16.3%	5	1	20.0%	341	47	13.8%
San Juan	182	23	12.6%	45	6	13.3%	6	2	33.3%	233	31	13.3%
Sevier	308	38	12.3%	107	15	14.0%	5	1	20.0%	420	54	12.9%
Davis	2,937	389	13.2%	1,350	155	11.5%	14	3	21.4%	4,301	547	12.7%
Emery	195	21	10.8%	57	10	17.5%	4	1	25.0%	256	32	12.5%
Grand	142	18	12.7%	91	11	12.1%	1	0	0.0%	234	29	12.4%
Utah	6,593	773	11.7%	2,884	350	12.1%	18	3	16.7%	9,495	1,126	11.9%
Box Elder	787	92	11.7%	260	27	10.4%	9	2	22.2%	1,056	121	11.5%
Sanpete	221	25	11.3%	86	10	11.6%	1	0	0.0%	308	35	11.4%
Cache	1,488	167	11.2%	467	54	11.6%	4	0	0.0%	1,959	221	11.3%
Salt Lake	15,003	1,494	10.0%	6,665	764	11.5%	62	11	17.7%	21,730	2,269	10.4%
Iron	469	46	9.8%	243	27	11.1%	10	2	20.0%	722	75	10.4%
Millard	211	21	10.0%	104	12	11.5%	3	0	0.0%	318	33	10.4%
Piute	20	2	10.0%	8	1	12.5%	1	0	0.0%	29	3	10.3%
Beaver	199	21	10.6%	58	4	6.9%	1	1	100.0%	258	26	10.1%
Tooele	728	75	10.3%	279	26	9.3%	9	1	11.1%	1,016	102	10.0%
Daggett	14	1	7.1%	8	1	12.5%	0	0	n/a	22	2	9.1%
Morgan	108	10	9.3%	43	4	9.3%	3	0	0.0%	154	14	9.1%
Wayne	32	4	12.5%	14	0	0.0%	0	0	n/a	46	4	8.7%
Wasatch	418	36	8.6%	164	14	8.5%	3	0	0.0%	585	50	8.5%
Uintah	418	33	7.9%	140	14	10.0%	6	0	0.0%	564	47	8.3%
Summit	833	63	7.6%	201	22	10.9%	7	1	14.3%	1,041	86	8.3%
Duchesne	459	44	9.6%	116	1	0.9%	9	1	11.1%	584	46	7.9%
Rich	48	3	6.3%	31	2	6.5%	0	0	n/a	79	5	6.3%
<b>Statewide</b>	<b>36,418</b>	<b>4,108</b>	<b>11.3%</b>	<b>15,645</b>	<b>1,914</b>	<b>12.2%</b>	<b>224</b>	<b>38</b>	<b>17.0%</b>	<b>52,287</b>	<b>6,060</b>	<b>11.6%</b>

- Overall, Garfield (20.4%), Washington (20.0%), and Kane (17.0%) counties had the highest percentages of crashes involving a senior driver.
- Beaver (100.0%), San Juan (33.3%), and Kane (33.3%) counties had the highest percentages of fatal crashes involving a senior driver.
- Overall, Rich (6.3%), Duchesne (7.9%), and Summit (8.3%) counties had the lowest percentages of crashes involving a senior driver.
- Statewide, senior driver crashes represented 11.6% of all crashes and 17.0% of all fatal crashes.

## Drivers

### Gender of Senior Drivers in Crashes (Utah 2011)

Senior (Age 65+) Drivers								
Gender	PDO Crashes		Injury Crashes		Fatal Crashes		Total	
	#	%	#	%	#	%	#	%
Male	2,604	60.7%	1,184	58.8%	30	75.0%	3,818	60.2%
Female	1,684	39.2%	828	41.1%	10	25.0%	2,522	39.7%
Unknown	5	0.1%	1	0.0%	0	0.0%	6	0.1%
<b>Total</b>	<b>4,293</b>	<b>100.0%</b>	<b>2,013</b>	<b>100.0%</b>	<b>40</b>	<b>100.0%</b>	<b>6,346</b>	<b>100.0%</b>

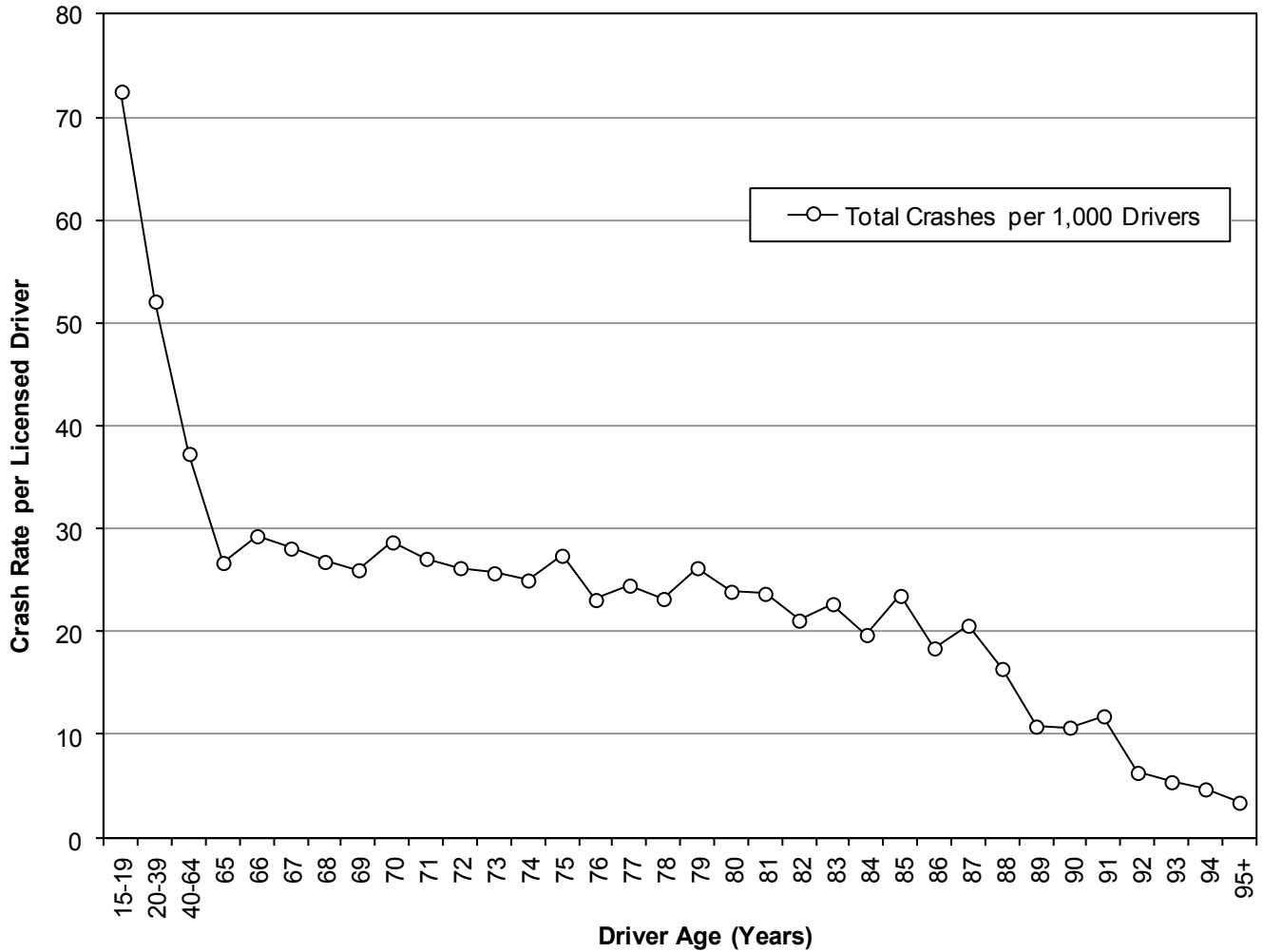
- The majority of senior drivers in all motor vehicle crashes (60.2%) and fatal crashes (75.0%) were male.

### Age of Senior Drivers in Crashes (Utah 2011)

Senior (Age 65+) Drivers												
Age	PDO Crashes			Injury Crashes			Fatal Crashes			Total		
	#	%	Rate per 1,000 Drivers	#	%	Rate per 1,000 Drivers	#	%	Rate per 1,000 Drivers	#	%	Rate per 1,000 Drivers
65	378	8.8%	19.3	142	7.1%	7.2	4	10.0%	0.20	524	8.3%	26.7
66	319	7.4%	19.9	147	7.3%	9.2	3	7.5%	0.19	469	7.4%	29.3
67	297	6.9%	18.3	159	7.9%	9.8	1	2.5%	0.06	457	7.2%	28.1
68	313	7.3%	18.5	137	6.8%	8.1	4	10.0%	0.24	454	7.2%	26.8
69	279	6.5%	17.8	123	6.1%	7.9	4	10.0%	0.26	406	6.4%	26.0
70	277	6.5%	20.1	117	5.8%	8.5	2	5.0%	0.14	396	6.2%	28.7
71	249	5.8%	19.4	95	4.7%	7.4	4	10.0%	0.31	348	5.5%	27.1
72	213	5.0%	18.0	96	4.8%	8.1	1	2.5%	0.08	310	4.9%	26.2
73	187	4.4%	16.1	109	5.4%	9.4	2	5.0%	0.17	298	4.7%	25.7
74	175	4.1%	16.2	95	4.7%	8.8	0	0.0%	0.00	270	4.3%	25.0
75	182	4.2%	18.0	95	4.7%	9.4	0	0.0%	0.00	277	4.4%	27.4
76	153	3.6%	15.6	73	3.6%	7.4	1	2.5%	0.10	227	3.6%	23.1
77	152	3.5%	16.2	76	3.8%	8.1	1	2.5%	0.11	229	3.6%	24.5
78	130	3.0%	15.7	62	3.1%	7.5	0	0.0%	0.00	192	3.0%	23.2
79	157	3.7%	19.8	51	2.5%	6.4	0	0.0%	0.00	208	3.3%	26.2
80	122	2.8%	15.6	64	3.2%	8.2	1	2.5%	0.13	187	2.9%	23.9
81	121	2.8%	16.2	56	2.8%	7.5	0	0.0%	0.00	177	2.8%	23.7
82	84	2.0%	12.5	57	2.8%	8.5	1	2.5%	0.15	142	2.2%	21.1
83	100	2.3%	15.6	44	2.2%	6.9	2	5.0%	0.31	146	2.3%	22.7
84	69	1.6%	11.8	43	2.1%	7.4	3	7.5%	0.52	115	1.8%	19.7
85	86	2.0%	16.3	38	1.9%	7.2	0	0.0%	0.00	124	2.0%	23.5
86	57	1.3%	11.6	33	1.6%	6.7	1	2.5%	0.20	91	1.4%	18.4
87	55	1.3%	12.8	30	1.5%	7.0	4	10.0%	0.93	89	1.4%	20.6
88	46	1.1%	11.8	17	0.8%	4.4	1	2.5%	0.26	64	1.0%	16.4
89	25	0.6%	7.3	12	0.6%	3.5	0	0.0%	0.00	37	0.6%	10.8
90	18	0.4%	5.9	15	0.7%	4.9	0	0.0%	0.00	33	0.5%	10.7
91	17	0.4%	6.7	13	0.6%	5.1	0	0.0%	0.00	30	0.5%	11.8
92	11	0.3%	5.3	2	0.1%	1.0	0	0.0%	0.00	13	0.2%	6.3
93	4	0.1%	2.2	6	0.3%	3.3	0	0.0%	0.00	10	0.2%	5.4
94	4	0.1%	2.7	3	0.1%	2.0	0	0.0%	0.00	7	0.1%	4.7
95+	13	0.3%	2.8	3	0.1%	0.6	0	0.0%	0.00	16	0.3%	3.4
<b>Total</b>	<b>4,293</b>	<b>100.0%</b>	<b>16.4</b>	<b>2,013</b>	<b>100.0%</b>	<b>7.7</b>	<b>40</b>	<b>100.0%</b>	<b>0.15</b>	<b>6,346</b>	<b>100.0%</b>	<b>24.2</b>

# Drivers

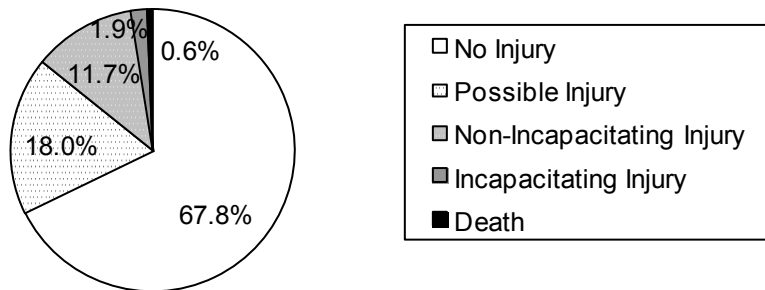
## Crash Rate of Licensed Drivers by Age (Utah 2011)



- The older the driver the less likely they were to be in a crash per licensed driver.
- Senior drivers had the lowest crash rate per licensed driver.

# Crash Conditions

## Senior Driver Crash Severity (Utah 2011)



- Senior driver crashes were more likely to result in injury or death compared to all crashes (32.2% to 30.3%).

## Crash Conditions

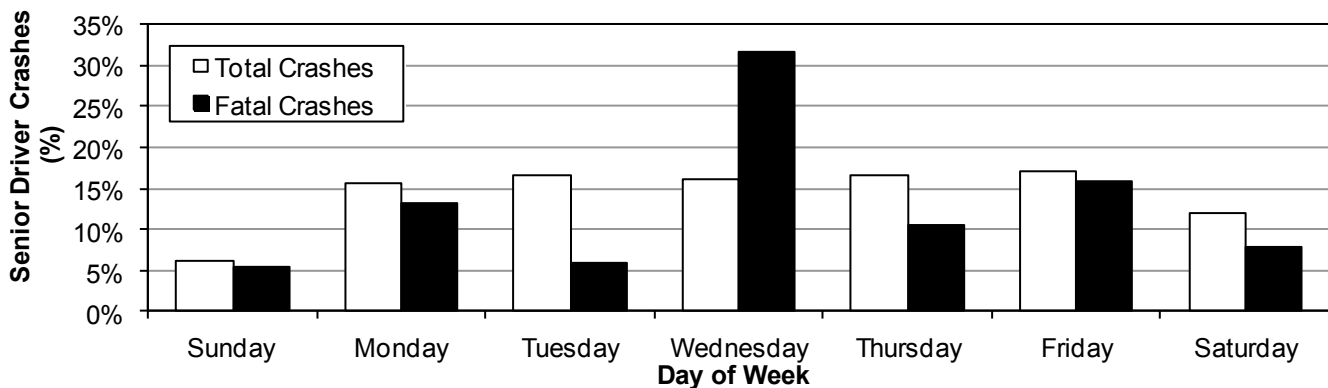
### Senior Driver Crashes by Month (Utah 2011)

Senior (Age 65+) Driver Crashes								
Month	PDO Crashes		Injury Crashes		Fatal Crashes		Total	
	#	Rate per Day	#	Rate per Day	#	Rate per Day	#	Rate per Day
January	329	10.6	121	3.9	1	0.03	451	14.5
February	288	10.3	108	3.9	1	0.04	397	14.2
March	331	10.7	142	4.6	2	0.06	475	15.3
April	283	9.4	139	4.6	2	0.07	424	14.1
May	306	9.9	154	5.0	1	0.03	461	14.9
June	314	10.5	157	5.2	4	0.13	475	15.8
July	343	11.1	175	5.6	6	0.19	524	16.9
August	381	12.3	195	6.3	7	0.23	583	18.8
September	349	11.6	192	6.4	3	0.10	544	18.1
October	390	12.6	195	6.3	5	0.16	590	19.0
November	358	11.9	152	5.1	1	0.03	511	17.0
December	436	14.1	184	5.9	5	0.16	625	20.2
<b>Total</b>	<b>4,108</b>	<b>11.3</b>	<b>1,914</b>	<b>5.2</b>	<b>38</b>	<b>0.10</b>	<b>6,060</b>	<b>16.6</b>

- Overall, December (20.2) and October (19.0) had the highest rates per day for senior driver crashes.
- The highest rate per day of fatal senior driver crashes occurred in August (0.23).

### Senior Driver Crashes by Day of Week (Utah 2011)

Senior (Age 65+) Driver Crashes								
Day of Week	PDO Crashes		Injury Crashes		Fatal Crashes		Total	
	#	%	#	%	#	%	#	%
Sunday	234	5.7%	142	7.4%	2	5.3%	378	6.2%
Monday	647	15.7%	299	15.6%	5	13.2%	951	15.7%
Tuesday	671	16.3%	320	16.7%	6	15.8%	997	16.5%
Wednesday	661	16.1%	295	15.4%	12	31.6%	968	16.0%
Thursday	686	16.7%	309	16.1%	4	10.5%	999	16.5%
Friday	722	17.6%	303	15.8%	6	15.8%	1,031	17.0%
Saturday	487	11.9%	246	12.9%	3	7.9%	736	12.1%
<b>Total</b>	<b>4,108</b>	<b>100.0%</b>	<b>1,914</b>	<b>100.0%</b>	<b>38</b>	<b>100.0%</b>	<b>6,060</b>	<b>100.0%</b>

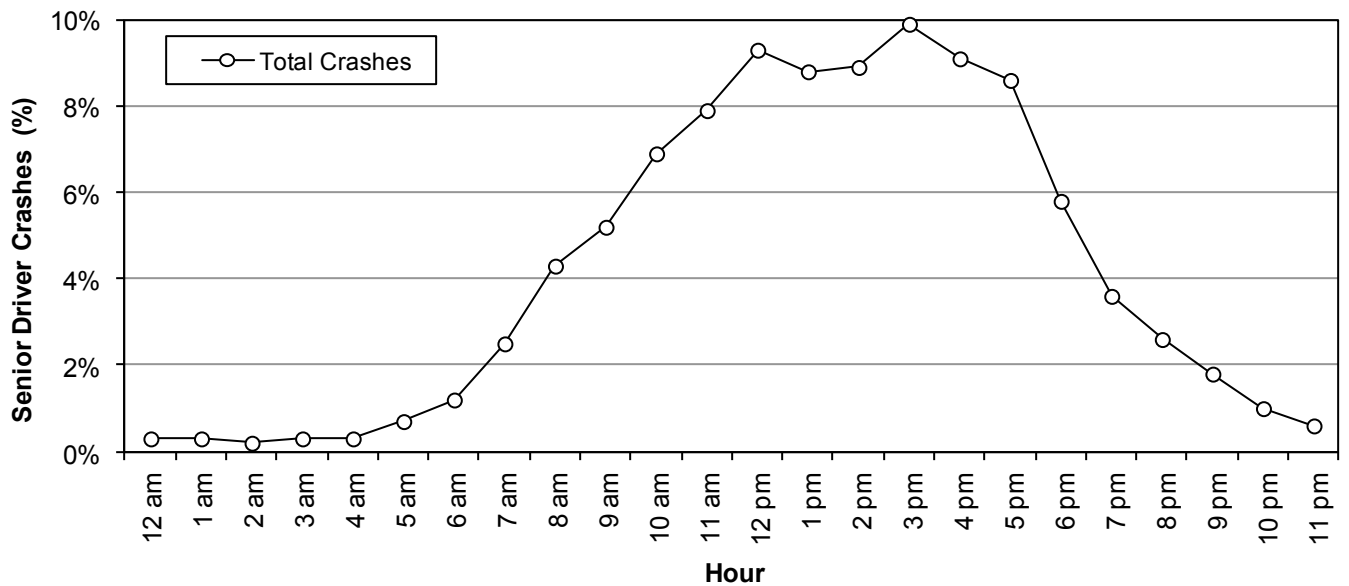


- Overall, the highest percentage of senior driver crashes occurred on Friday (17.0%).
- The highest percentage of fatal senior driver crashes occurred on Wednesday (31.6%).

# Crash Conditions

## Senior Driver Crashes by Hour (Utah 2011)

Senior (Age 65+) Driver Crashes								
Hour	PDO Crashes		Injury Crashes		Fatal Crashes		Total	
	#	%	#	%	#	%	#	%
Midnight	9	0.2%	7	0.4%	0	0.0%	16	0.3%
1 a.m.	12	0.3%	6	0.3%	0	0.0%	18	0.3%
2 a.m.	11	0.3%	3	0.2%	0	0.0%	14	0.2%
3 a.m.	12	0.3%	5	0.3%	0	0.0%	17	0.3%
4 a.m.	12	0.3%	4	0.2%	0	0.0%	16	0.3%
5 a.m.	27	0.7%	14	0.7%	1	2.6%	42	0.7%
6 a.m.	49	1.2%	23	1.2%	0	0.0%	72	1.2%
7 a.m.	105	2.6%	48	2.5%	0	0.0%	153	2.5%
8 a.m.	167	4.1%	93	4.9%	0	0.0%	260	4.3%
9 a.m.	218	5.3%	98	5.1%	0	0.0%	316	5.2%
10 a.m.	276	6.7%	137	7.2%	5	13.2%	418	6.9%
11 a.m.	319	7.8%	159	8.3%	1	2.6%	479	7.9%
Noon	380	9.3%	180	9.4%	1	2.6%	561	9.3%
1 p.m.	360	8.8%	162	8.5%	12	31.6%	534	8.8%
2 p.m.	380	9.3%	156	8.2%	3	7.9%	539	8.9%
3 p.m.	412	10.0%	184	9.6%	3	7.9%	599	9.9%
4 p.m.	381	9.3%	170	8.9%	2	5.3%	553	9.1%
5 p.m.	356	8.7%	166	8.7%	0	0.0%	522	8.6%
6 p.m.	236	5.7%	112	5.9%	4	10.5%	352	5.8%
7 p.m.	141	3.4%	73	3.8%	2	5.3%	216	3.6%
8 p.m.	112	2.7%	46	2.4%	1	2.6%	159	2.6%
9 p.m.	66	1.6%	39	2.0%	2	5.3%	107	1.8%
10 p.m.	39	0.9%	24	1.3%	0	0.0%	63	1.0%
11 p.m.	28	0.7%	5	0.3%	1	2.6%	34	0.6%
<b>Total</b>	<b>4,108</b>	<b>100.0%</b>	<b>1,914</b>	<b>100.0%</b>	<b>38</b>	<b>100.0%</b>	<b>6,060</b>	<b>100.0%</b>



- Senior driver total crashes were highest from 12:00 p.m. to 5:59 p.m.
- Fatal senior driver crashes varied throughout the day and peaked during the 1:00 p.m. hour.

## Crash Conditions

### Contributing Factors of Senior Driver Crashes (Utah 2011)

Senior (Age 65+) Drivers/Vehicles								
Contributing Factors	PDO Crashes		Injury Crashes		Fatal Crashes		Total	
	#	%	#	%	#	%	#	%
Failed to Yield Right of Way	624	19.0%	396	22.8%	7	12.3%	1,027	20.2%
Followed Too Closely	350	10.7%	206	11.8%	2	3.5%	558	11.0%
Failed to Keep in Proper Lane	270	8.2%	145	8.3%	10	17.5%	425	8.4%
Other Improper Driving	243	7.4%	108	6.2%	0	0.0%	351	6.9%
Improper Turn	205	6.2%	73	4.2%	1	1.8%	279	5.5%
Disregard Traffic Signal/Sign	124	3.8%	145	8.3%	4	7.0%	273	5.4%
Improper Backing	234	7.1%	11	0.6%	0	0.0%	245	4.8%
Driver Distraction	138	4.2%	99	5.7%	0	0.0%	237	4.7%
Speed Too Fast	125	3.8%	93	5.3%	4	7.0%	222	4.4%
Improper Lane Change	174	5.3%	21	1.2%	2	3.5%	197	3.9%
Ran Off Road	62	1.9%	49	2.8%	12	21.1%	123	2.4%
Improper Parking/Stopping	85	2.6%	24	1.4%	1	1.8%	110	2.2%
Vision Obscured by Weather Condition	68	2.1%	31	1.8%	1	1.8%	100	2.0%
Overcorrected	40	1.2%	44	2.5%	3	5.3%	87	1.7%
Driver Asleep/Fatigue	43	1.3%	39	2.2%	0	0.0%	82	1.6%
Driver Illness/Medical	30	0.9%	43	2.5%	1	1.8%	74	1.5%
Vehicle Other Defective Condition	51	1.6%	23	1.3%	0	0.0%	74	1.5%
Swerved or Evasive Action	41	1.2%	25	1.4%	1	1.8%	67	1.3%
Other Driver Condition	43	1.3%	15	0.9%	2	3.5%	60	1.2%
Hit and Run	51	1.6%	8	0.5%	0	0.0%	59	1.2%
Vision Obscured by Moving Vehicle	38	1.2%	17	1.0%	0	0.0%	55	1.1%
Vision Obscured by Glare	27	0.8%	25	1.4%	0	0.0%	52	1.0%
Driving Under the Influence	17	0.5%	20	1.1%	2	3.5%	39	0.8%
Vision Obscured by Parked Vehicle	28	0.9%	9	0.5%	0	0.0%	37	0.7%
Improper Passing	32	1.0%	3	0.2%	1	1.8%	36	0.7%
Wrong Side/Wrong Way	18	0.5%	16	0.9%	1	1.8%	35	0.7%
Vision Obscured by Other	23	0.7%	11	0.6%	0	0.0%	34	0.7%
Vehicle Cargo	24	0.7%	1	0.1%	0	0.0%	25	0.5%
Disregard Road Markings	18	0.5%	6	0.3%	0	0.0%	24	0.5%
Driver Emotional Prior to Crash	14	0.4%	8	0.5%	0	0.0%	22	0.4%
Vehicle Brakes	15	0.5%	3	0.2%	0	0.0%	18	0.4%
Vehicle Tires	8	0.2%	7	0.4%	1	1.8%	16	0.3%
Reckless/Aggressive Driving	6	0.2%	5	0.3%	0	0.0%	11	0.2%
Vision Obscured by Vegetation	5	0.2%	5	0.3%	1	1.8%	11	0.2%
Vision Obscured by Building, Sign, etc.	4	0.1%	2	0.1%	0	0.0%	6	0.1%
Windshield or Other Window Obscured	3	0.1%	3	0.2%	0	0.0%	6	0.1%
Improper Signal	3	0.1%	1	0.1%	0	0.0%	4	0.1%
<b>Total</b>	<b>3,284</b>	<b>100.0%</b>	<b>1,740</b>	<b>100.0%</b>	<b>57</b>	<b>100.0%</b>	<b>5,081</b>	<b>100.0%</b>

- Some form of poor driver performance is present in the majority of crashes. The leading contributing factors for all senior driver crashes were failed to yield right of way (20.2%), followed too closely (11.0%), and failed to keep in proper lane (8.4%).
- The leading contributing factors in fatal senior driver crashes were ran off road (13.0%), failed to keep in proper lane (17.5%), and failed to yield right of way (12.3%).
- Compared to drivers of all ages, senior drivers were more likely to have a contributing factor of failure to yield right of way, improper turn, disregard traffic signal/sign, and improper backing.



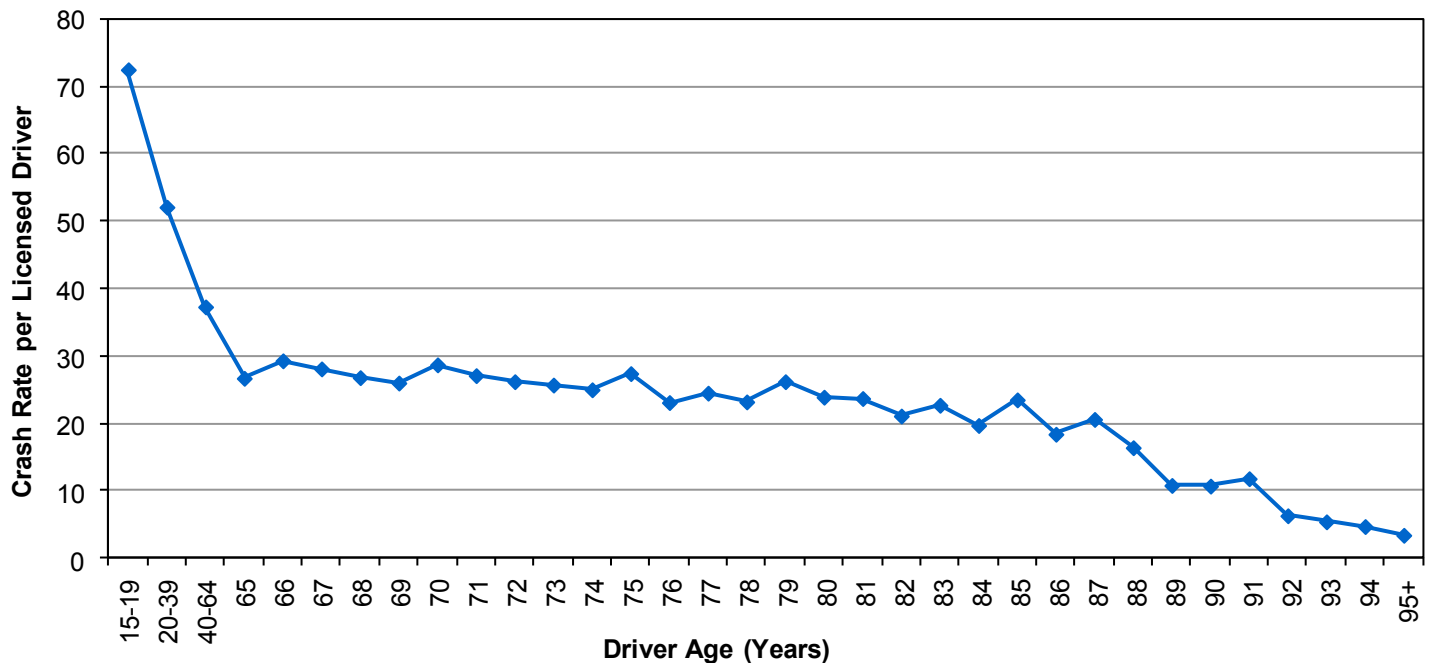
## Did you know in 2011:

- Senior drivers had the lowest crash rate per licensed driver.
- Senior drivers were in 6,060 motor vehicle crashes which resulted in 2,926 injured persons and 42 deaths.
- Seniors represented 6% of people in a crash and 15% of the deaths.
- Although senior drivers have the lowest crash rates of any drivers, senior drivers are a concern due to declining health and fragility.

## Senior Drivers (Age 65+)



**Crash Rates per Licensed Driver by Age (Utah 2011)**



- The older the driver the less likely they were in a crash per licensed driver.

## Leading Contributing Factors of Senior Driver Crashes Compared to All Drivers (Utah 2011)

### All Drivers in Crashes

1. Followed Too Closely (23%)
2. Failed to Yield Right of Way (18%)
3. Failed to Keep in Proper Lane (13%)
4. Speed Too Fast (12%)
5. Driver Distraction (9%)

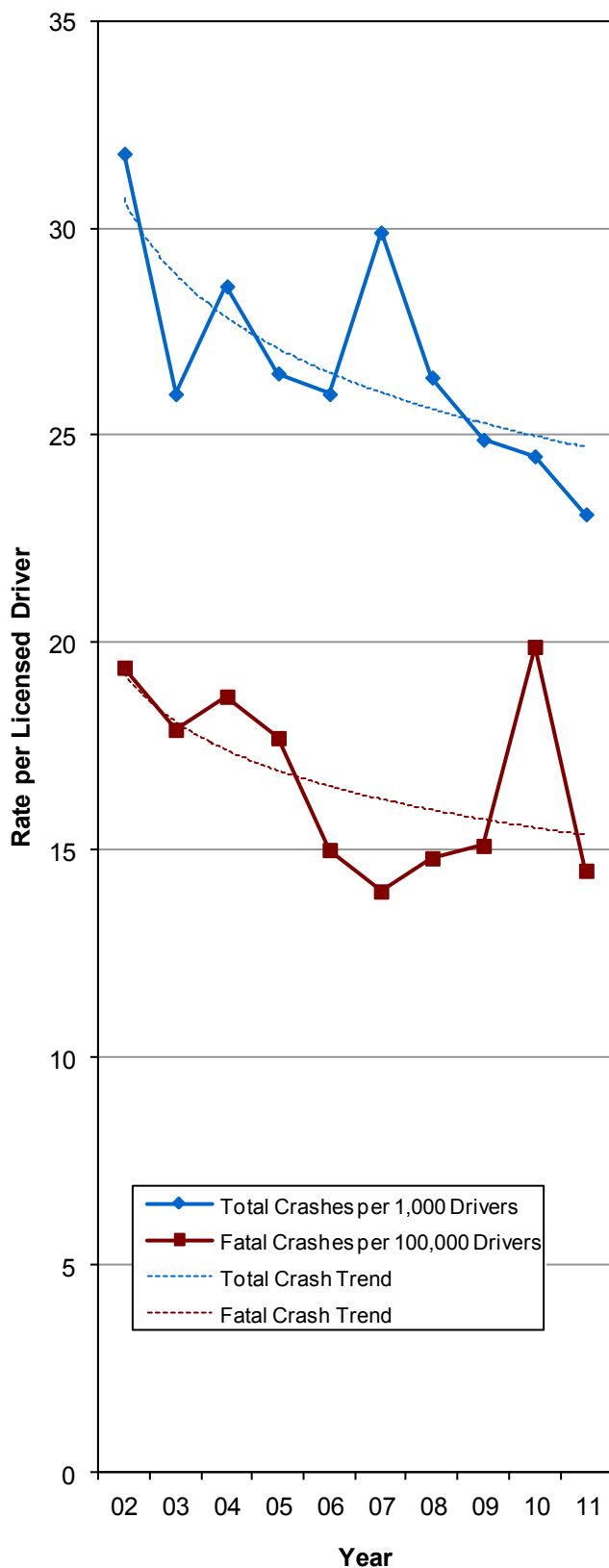
### Senior Driver Crashes

1. Failed to Yield Right of Way (17%)
2. Followed Too Closely (9%)
3. Failed to Keep in Proper Lane (7%)
4. Improper Turn (5%)
5. Disregard Traffic Signal/Sign (5%)

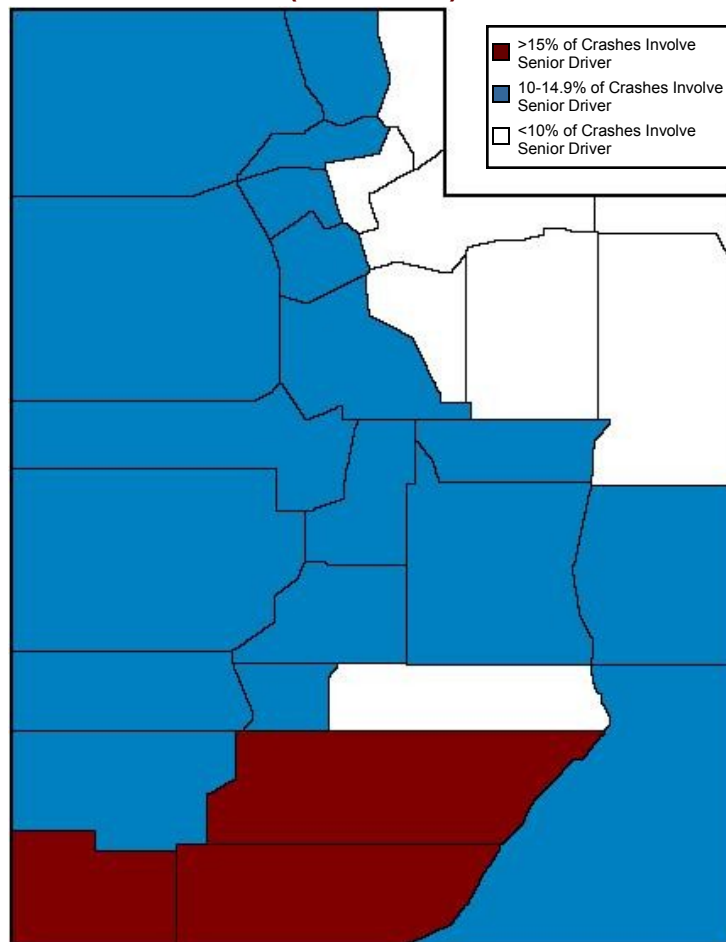
- Senior drivers were less likely to have a contributing factor than other drivers in a crash.
- Compared to drivers of all ages, senior drivers were more likely to have a contributing factor of improper turn and disregard traffic signal/sign.

Senior Driver Crash Trend  
(Utah 2002-2011)

Senior Drivers  
(Age 65+)

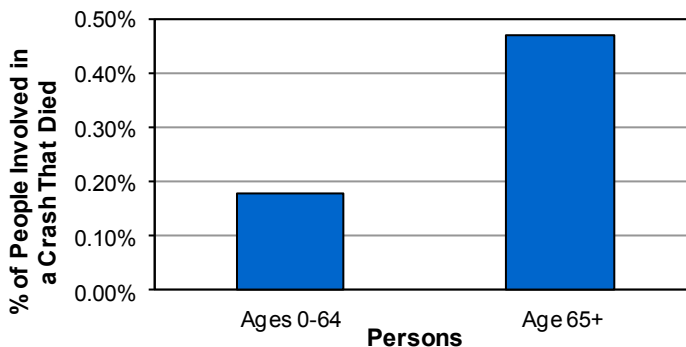


Senior Driver Crashes by County  
(Utah 2011)



- Garfield, Washington, and Kane counties had the highest percent of crashes that involved a senior driver.

Injury Severity by Age (Utah 2011)



- The senior driver crash rate per licensed driver decreased 27% from 2002 to 2011.

- People age 65+ were 2.6 times more likely to be killed in a crash than younger people.