

Older (Age 65+) Drivers



2

Section 9: Older (Age 65+) Drivers



Trends

Older Driver Crashes 2006-2015	2
Older Driver Fatal Crashes 2006-2015	3

Crash Conditions

County	4
Driver Gender	5
Driver Age	5
Crash Rate of Licensed Drivers by Age	6
Crash Severity	6
Month	7
Day of Week	7
Hour	8
Drivers with Contributing Factors	9
Contributing Factors	10

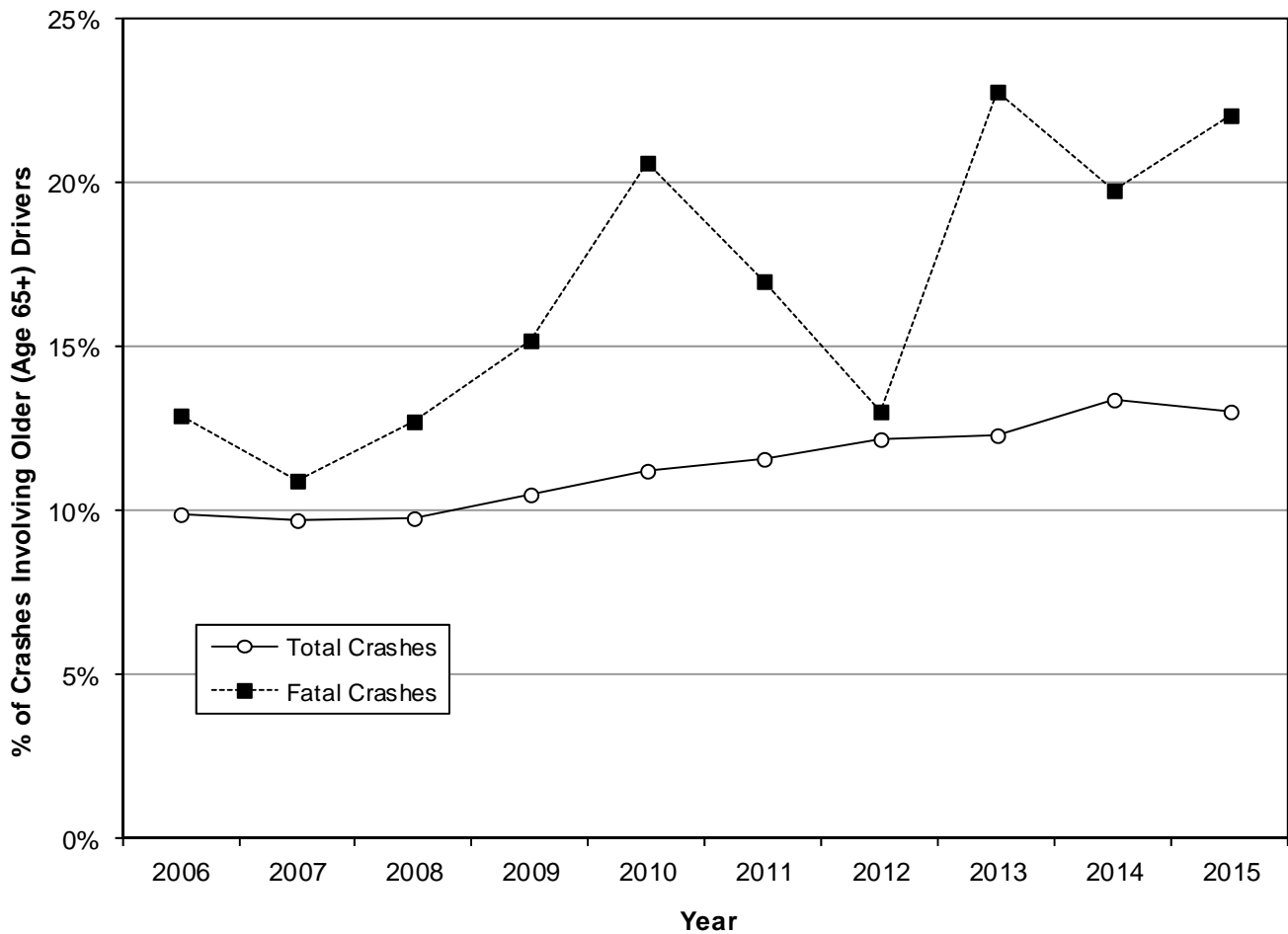
1

5

Trends

Older Driver Crashes (Utah 2006-2015)

Year	Property Damage Only			Injury			Fatal			Total		
	All	Older Driver		All	Older Driver		All	Older Driver		All	Older Driver	
	#	#	%	#	#	%	#	#	%	#	#	%
2006	37,674	3,508	9.3%	18,264	2,010	11.0%	249	32	12.9%	56,187	5,550	9.9%
2007	42,368	3,937	9.3%	18,619	1,991	10.7%	258	28	10.9%	61,245	5,956	9.7%
2008	38,997	3,620	9.3%	17,125	1,872	10.9%	245	31	12.7%	56,367	5,523	9.8%
2009	35,398	3,552	10.0%	15,752	1,834	11.6%	217	33	15.2%	51,367	5,419	10.5%
2010	34,155	3,658	10.7%	14,995	1,830	12.2%	218	45	20.6%	49,368	5,533	11.2%
2011	36,418	4,108	11.3%	15,645	1,914	12.2%	224	38	17.0%	52,287	6,060	11.6%
2012	34,635	4,043	11.7%	15,765	2,080	13.2%	200	26	13.0%	50,600	6,149	12.2%
2013	39,301	4,627	11.8%	16,134	2,182	13.5%	202	46	22.8%	55,637	6,855	12.3%
2014	37,388	4,838	12.9%	16,426	2,372	14.4%	222	44	19.8%	54,036	7,254	13.4%
2015	42,089	5,274	12.5%	17,665	2,482	14.1%	258	57	22.1%	60,012	7,813	13.0%
Total	378,423	41,165	10.9%	166,390	20,567	12.4%	2,293	380	16.6%	547,106	62,112	11.4%

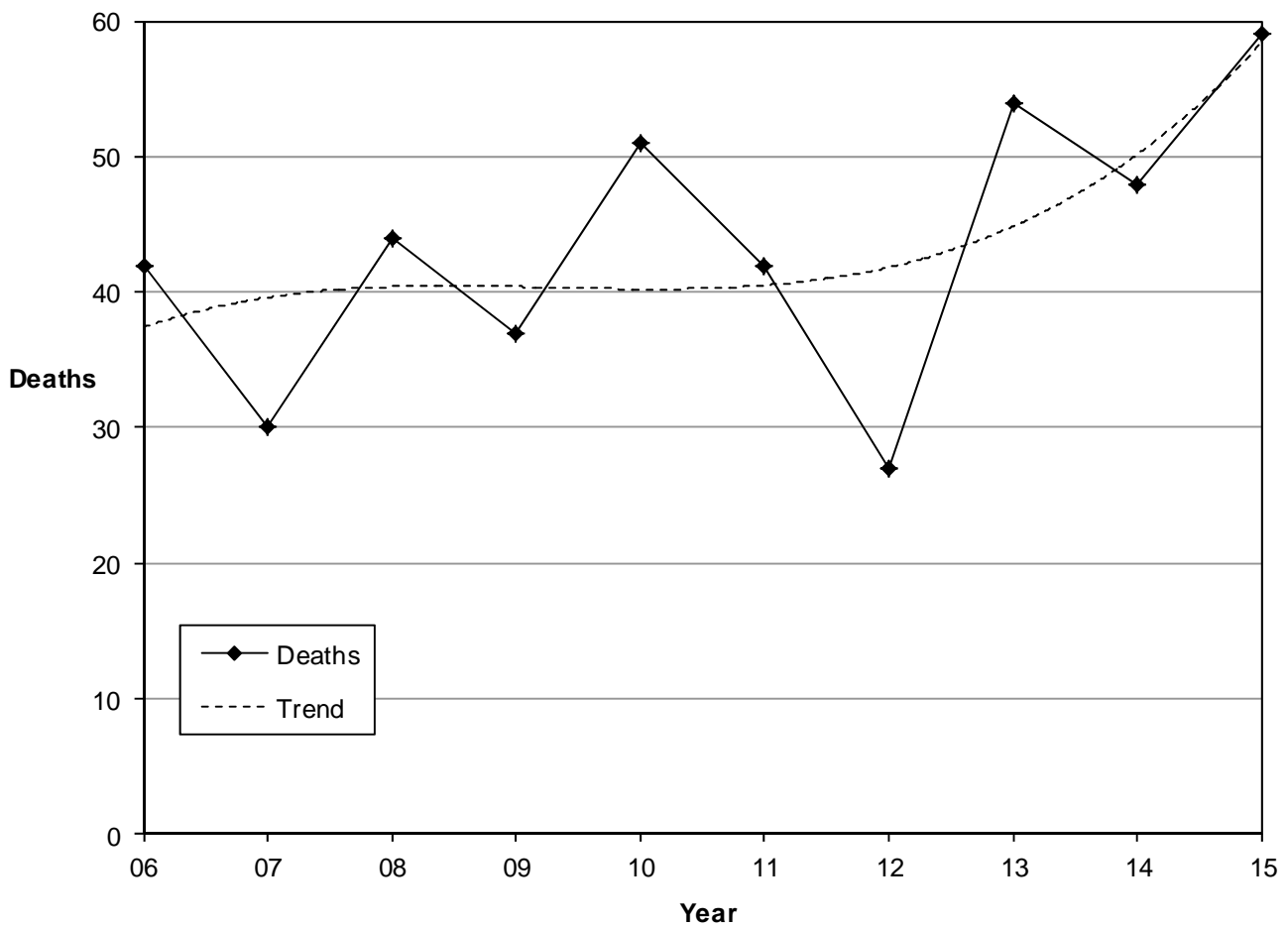


- Older drivers (aged 65+ years) are a special concern because of their declining health and fragility.
- The 10-year trend shows that 11.4% of all crashes in Utah involved an older driver with an increasing trend over the last seven years. Fatal older driver crashes have fluctuated around the 10-year average of 16.6% of fatal crashes. In 2015, older drivers were in over one-fifth (22.1%) of the fatal crashes.

Trends

Fatal Crashes Involving Older Drivers (Utah 2006-2015)

Year	Deaths			Fatal Crashes		
	All	Older Driver	%	All	Older Driver	%
	#	#	%	#	#	%
2006	287	42	14.6%	249	32	12.9%
2007	299	30	10.0%	260	28	10.8%
2008	276	44	15.9%	244	31	12.7%
2009	244	37	15.2%	217	33	15.2%
2010	253	51	20.2%	218	45	20.6%
2011	243	42	17.3%	224	38	17.0%
2012	217	27	12.4%	200	26	13.0%
2013	220	54	24.5%	202	46	22.8%
2014	256	48	18.8%	222	44	19.8%
2015	278	59	21.2%	258	57	22.1%
Total	2,573	434	16.9%	2,294	380	16.6%



- Over the past 10 years, the percentage of deaths and fatal crashes involving older drivers has fluctuated around 17% of all deaths and fatal crashes.
- On average, 43 people die a year in Utah from crashes involving an older driver.

Crash Conditions

Older Driver Crashes by County (Utah 2015)

Older (Age 65+) Driver Crashes												
County	PDO Crashes			Injury Crashes			Fatal Crashes			Total		
	All	Older Driver		All	Older Driver		All	Older Driver		All	Older Driver	
	#	#	%	#	#	%	#	#	%	#	#	%
Washington	1,704	389	22.8%	854	187	21.9%	17	6	35.3%	2,575	582	22.6%
Piute	23	4	17.4%	7	2	28.6%	0	0	n/a	30	6	20.0%
Wayne	56	9	16.1%	19	4	21.1%	1	0	0.0%	76	13	17.1%
Garfield	136	24	17.6%	54	8	14.8%	0	0	n/a	190	32	16.8%
Carbon	302	48	15.9%	89	17	19.1%	6	0	0.0%	397	65	16.4%
Beaver	165	26	15.8%	52	7	13.5%	4	2	50.0%	221	35	15.8%
Sevier	278	40	14.4%	116	21	18.1%	3	1	33.3%	397	62	15.6%
Millard	285	43	15.1%	96	16	16.7%	7	0	0.0%	388	59	15.2%
Weber	2,764	381	13.8%	1,530	255	16.7%	20	4	20.0%	4,314	640	14.8%
Sanpete	260	33	12.7%	100	20	20.0%	4	0	0.0%	364	53	14.6%
Daggett	28	3	10.7%	6	2	33.3%	1	0	0.0%	35	5	14.3%
Cache	1,545	212	13.7%	535	75	14.0%	4	1	25.0%	2,084	288	13.8%
Iron	699	86	12.3%	255	41	16.1%	2	2	100.0%	956	129	13.5%
Box Elder	752	89	11.8%	276	48	17.4%	15	3	20.0%	1,043	140	13.4%
Davis	3,586	478	13.3%	1,725	226	13.1%	11	3	27.3%	5,322	707	13.3%
Kane	180	25	13.9%	43	4	9.3%	4	1	25.0%	227	30	13.2%
Grand	191	25	13.1%	90	12	13.3%	4	0	0.0%	285	37	13.0%
Uintah	429	52	12.1%	130	19	14.6%	5	1	20.0%	564	72	12.8%
Juab	233	24	10.3%	74	15	20.3%	0	0	n/a	307	39	12.7%
Duchesne	348	42	12.1%	89	13	14.6%	2	0	0.0%	439	55	12.5%
Rich	49	5	10.2%	16	3	18.8%	0	0	n/a	65	8	12.3%
Salt Lake	19,231	2,291	11.9%	7,849	1,013	12.9%	72	16	22.2%	27,152	3,320	12.2%
Tooele	792	100	12.6%	310	32	10.3%	14	4	28.6%	1,116	136	12.2%
Utah	5,997	655	10.9%	2,773	370	13.3%	35	10	28.6%	8,805	1,035	11.8%
Emery	196	23	11.7%	88	8	9.1%	5	1	20.0%	289	32	11.1%
Wasatch	569	48	8.4%	181	27	14.9%	10	1	10.0%	760	76	10.0%
Summit	953	91	9.5%	223	25	11.2%	6	1	16.7%	1,182	117	9.9%
San Juan	203	15	7.4%	49	9	18.4%	4	0	0.0%	256	24	9.4%
Morgan	135	13	9.6%	36	3	8.3%	2	0	0.0%	173	16	9.2%
Statewide	42,089	5,274	12.5%	17,665	2,482	14.1%	258	57	22.1%	60,012	7,813	13.0%

- Overall, Washington (22.6%), Piute (20.0%), and Wayne (17.1%) counties had the highest percentages of crashes involving an older driver.
- Salt Lake and Utah counties had the highest amount of fatal crashes involving an older driver.
- Overall, Morgan (9.2%), San Juan (9.4%), and Summit (9.9%) counties had the lowest percentages of crashes involving an older driver.
- Statewide, older driver crashes represented 13.0% of all crashes and 22.1% of all fatal crashes.

Crash Conditions

Gender of Older Drivers in Crashes (Utah 2015)

Older (Age 65+) Drivers								
Gender	PDO Crashes		Injury Crashes		Fatal Crashes		Total	
	#	%	#	%	#	%	#	%
Male	3,292	59.0%	1,532	58.4%	42	72.4%	4,866	58.9%
Female	2,269	40.7%	1,085	41.4%	16	27.6%	3,370	40.8%
Unknown	18	0.3%	5	0.2%	0	0.0%	23	0.3%
Total	5,579	100.0%	2,622	100.0%	58	100.0%	8,259	100.0%

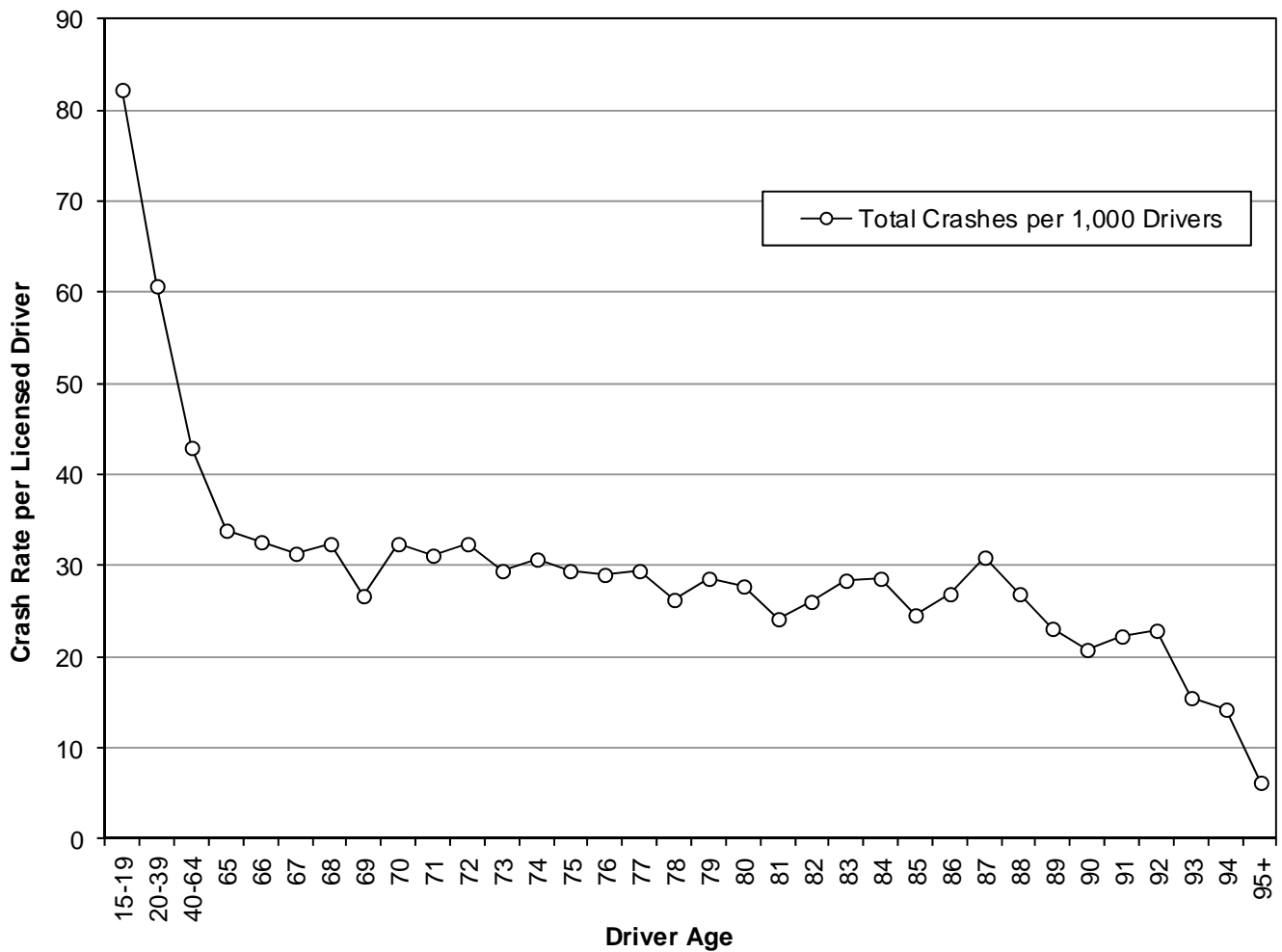
- The majority of older drivers in all motor vehicle crashes (58.9%) and fatal crashes (72.4%) were male.

Age of Older Drivers in Crashes (Utah 2015)

Older (Age 65+) Drivers												
Age	PDO Crashes			Injury Crashes			Fatal Crashes			Total		
	#	%	Rate per 1,000 Drivers	#	%	Rate per 1,000 Drivers	#	%	Rate per 1,000 Drivers	#	%	Rate per 1,000 Drivers
65	489	8.8%	22.9	232	8.8%	10.9	3	5.2%	0.141	724	8.8%	33.9
66	470	8.4%	22.4	206	7.9%	9.8	8	13.8%	0.382	684	8.3%	32.6
67	443	7.9%	21.6	194	7.4%	9.5	4	6.9%	0.195	641	7.8%	31.3
68	444	8.0%	21.5	219	8.4%	10.6	3	5.2%	0.145	666	8.1%	32.3
69	308	5.5%	17.5	160	6.1%	9.1	1	1.7%	0.057	469	5.7%	26.6
70	338	6.1%	23.0	132	5.0%	9.0	4	6.9%	0.273	474	5.7%	32.3
71	297	5.3%	20.2	160	6.1%	10.9	3	5.2%	0.204	460	5.6%	31.2
72	332	6.0%	21.7	157	6.0%	10.3	6	10.3%	0.392	495	6.0%	32.3
73	295	5.3%	21.1	114	4.3%	8.2	1	1.7%	0.072	410	5.0%	29.4
74	252	4.5%	20.9	115	4.4%	9.5	2	3.4%	0.166	369	4.5%	30.6
75	213	3.8%	19.1	114	4.3%	10.2	0	0.0%	0.000	327	4.0%	29.3
76	207	3.7%	20.5	85	3.2%	8.4	1	1.7%	0.099	293	3.5%	29.0
77	194	3.5%	19.7	91	3.5%	9.3	4	6.9%	0.407	289	3.5%	29.4
78	164	2.9%	18.3	71	2.7%	7.9	0	0.0%	0.000	235	2.8%	26.3
79	152	2.7%	18.2	85	3.2%	10.2	2	3.4%	0.240	239	2.9%	28.6
80	146	2.6%	18.8	66	2.5%	8.5	3	5.2%	0.386	215	2.6%	27.7
81	113	2.0%	15.6	61	2.3%	8.4	1	1.7%	0.138	175	2.1%	24.2
82	100	1.8%	16.2	61	2.3%	9.9	0	0.0%	0.000	161	1.9%	26.0
83	111	2.0%	19.2	52	2.0%	9.0	1	1.7%	0.173	164	2.0%	28.4
84	99	1.8%	18.3	51	1.9%	9.4	5	8.6%	0.923	155	1.9%	28.6
85	79	1.4%	16.0	42	1.6%	8.5	0	0.0%	0.000	121	1.5%	24.5
86	75	1.3%	18.5	33	1.3%	8.1	1	1.7%	0.247	109	1.3%	26.9
87	76	1.4%	20.9	34	1.3%	9.4	2	3.4%	0.551	112	1.4%	30.8
88	53	0.9%	17.3	29	1.1%	9.5	0	0.0%	0.000	82	1.0%	26.8
89	42	0.8%	17.1	13	0.5%	5.3	2	3.4%	0.812	57	0.7%	23.1
90	28	0.5%	14.2	13	0.5%	6.6	0	0.0%	0.000	41	0.5%	20.9
91	22	0.4%	13.9	13	0.5%	8.2	0	0.0%	0.000	35	0.4%	22.2
92	21	0.4%	17.1	6	0.2%	4.9	1	1.7%	0.816	28	0.3%	22.9
93	8	0.1%	9.5	5	0.2%	5.9	0	0.0%	0.000	13	0.2%	15.4
94	5	0.1%	7.8	4	0.2%	6.3	0	0.0%	0.000	9	0.1%	14.1
95+	3	0.1%	2.7	4	0.2%	3.6	0	0.0%	0.000	7	0.1%	6.3
Total	5,579	100.0%	20.1	2,622	100.0%	9.4	58	100.0%	0.209	8,259	100.0%	29.7

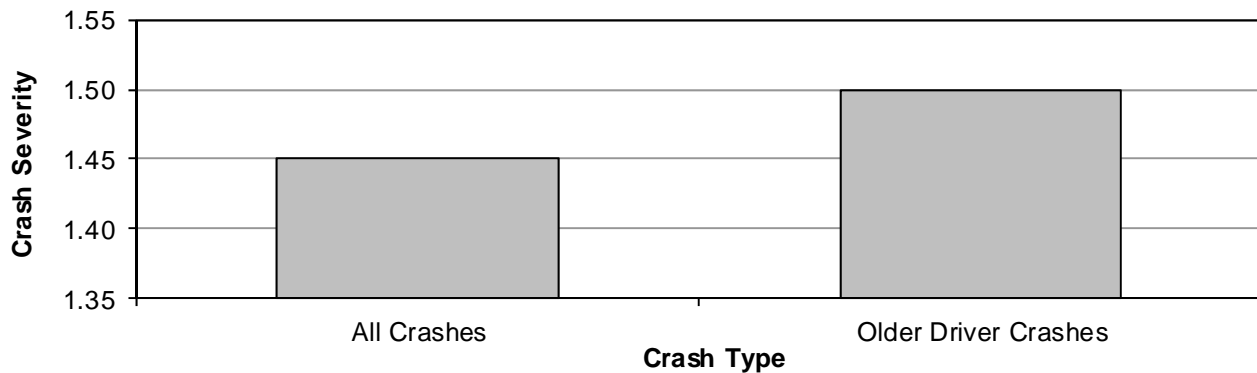
Crash Conditions

Crash Rate of Licensed Drivers by Age (Utah 2015)



- The older the driver the less likely they were to be in a crash per licensed driver.
- Older drivers had the lowest crash rate per licensed driver.

Older Driver Crash Severity (Utah 2015)



- Older driver crashes were 15% more likely to result in injury or death compared to all other crashes.

Crash Conditions

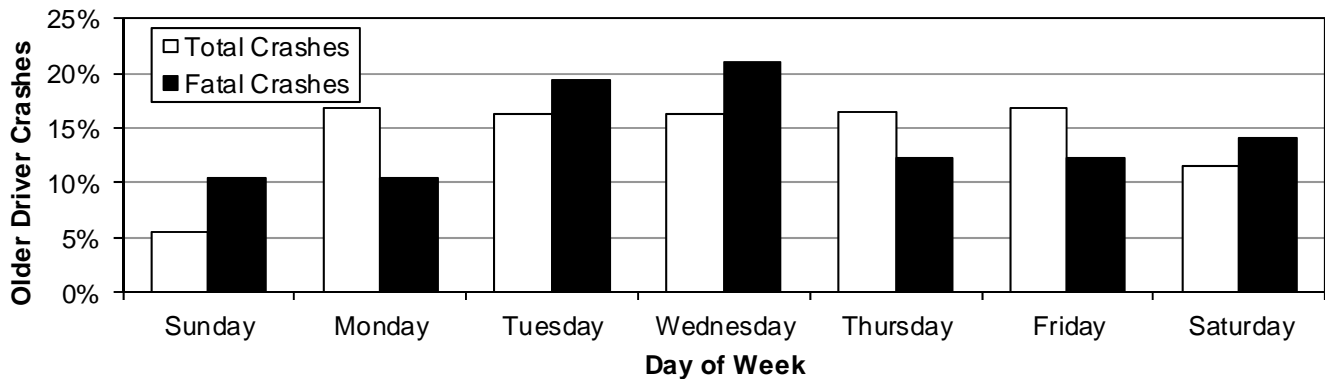
Older Driver Crashes by Month (Utah 2015)

Older (Age 65+) Driver Crashes								
Month	PDO Crashes		Injury Crashes		Fatal Crashes		Total	
	#	Rate per Day	#	Rate per Day	#	Rate per Day	#	Rate per Day
January	375	12.1	177	5.7	6	0.19	558	18.0
February	354	12.6	146	5.2	3	0.11	503	18.0
March	419	13.5	205	6.6	8	0.26	632	20.4
April	392	13.1	203	6.8	3	0.10	598	19.9
May	402	13.0	244	7.9	5	0.16	651	21.0
June	450	15.0	209	7.0	4	0.13	663	22.1
July	465	15.0	218	7.0	6	0.19	689	22.2
August	467	15.1	206	6.6	5	0.16	678	21.9
September	447	14.9	207	6.9	6	0.20	660	22.0
October	490	15.8	238	7.7	3	0.10	731	23.6
November	444	14.8	222	7.4	4	0.13	670	22.3
December	569	18.4	207	6.7	4	0.13	780	25.2
Total	5,274	14.4	2,482	6.8	57	0.16	7,813	21.4

- Overall, December (25.2) and October (23.6) had the highest rates per day for older driver crashes.
- The highest rate per day of fatal older driver crashes occurred in March and September.

Older Driver Crashes by Day of Week (Utah 2015)

Older (Age 65+) Driver Crashes								
Day of Week	PDO Crashes		Injury Crashes		Fatal Crashes		Total	
	#	%	#	%	#	%	#	%
Sunday	275	5.2%	150	6.0%	6	10.5%	431	5.5%
Monday	922	17.5%	395	15.9%	6	10.5%	1,323	16.9%
Tuesday	842	16.0%	415	16.7%	11	19.3%	1,268	16.2%
Wednesday	858	16.3%	402	16.2%	12	21.1%	1,272	16.3%
Thursday	874	16.6%	409	16.5%	7	12.3%	1,290	16.5%
Friday	893	16.9%	421	17.0%	7	12.3%	1,321	16.9%
Saturday	610	11.6%	290	11.7%	8	14.0%	908	11.6%
Total	5,274	100.0%	2,482	100.0%	57	100.0%	7,813	100.0%

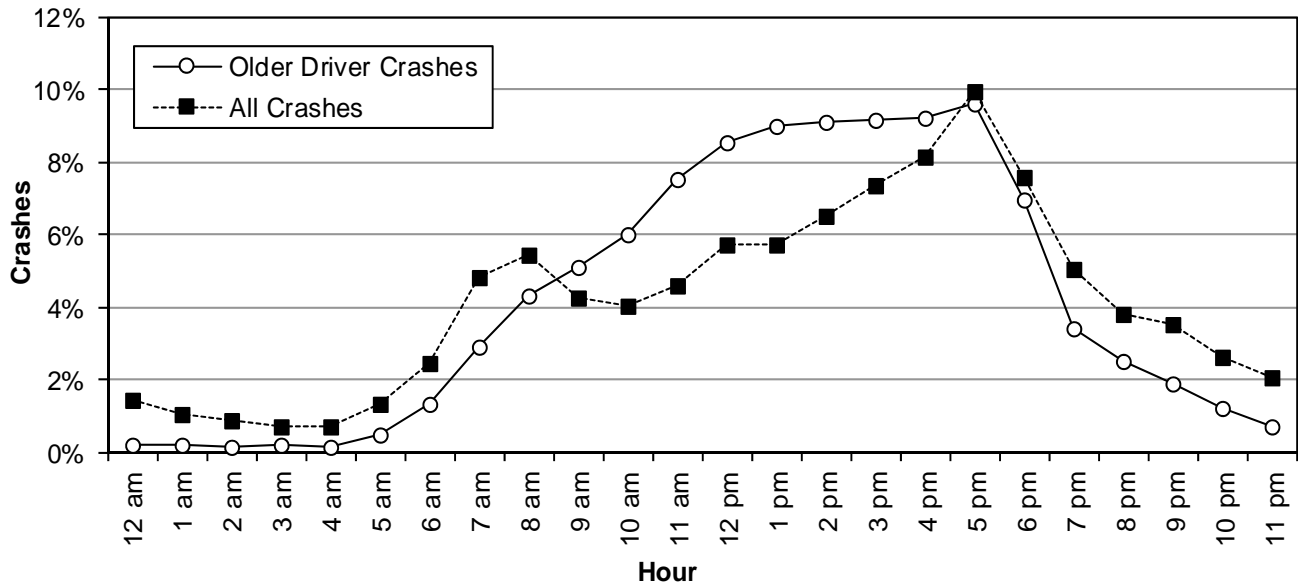


- Overall, the highest percentage of older driver crashes occurred on Monday (16.9%).
- The highest percentage of fatal older driver crashes occurred on Wednesday (21.1%).

Crash Conditions

Older Driver Crashes by Hour (Utah 2015)

Older (Age 65+) Driver Crashes								
Hour	PDO Crashes		Injury Crashes		Fatal Crashes		Total	
	#	%	#	%	#	%	#	%
Midnight	10	0.2%	7	0.3%	0	0.0%	17	0.2%
1 a.m.	6	0.1%	6	0.2%	2	3.5%	14	0.2%
2 a.m.	9	0.2%	4	0.2%	0	0.0%	13	0.2%
3 a.m.	9	0.2%	5	0.2%	0	0.0%	14	0.2%
4 a.m.	6	0.1%	5	0.2%	0	0.0%	11	0.1%
5 a.m.	32	0.6%	5	0.2%	2	3.5%	39	0.5%
6 a.m.	73	1.4%	29	1.2%	1	1.8%	103	1.3%
7 a.m.	142	2.7%	81	3.3%	3	5.3%	226	2.9%
8 a.m.	237	4.5%	98	3.9%	1	1.8%	336	4.3%
9 a.m.	277	5.3%	118	4.8%	3	5.3%	398	5.1%
10 a.m.	320	6.1%	146	5.9%	5	8.8%	471	6.0%
11 a.m.	403	7.6%	187	7.5%	1	1.8%	591	7.6%
Noon	465	8.8%	199	8.0%	3	5.3%	667	8.5%
1 p.m.	473	9.0%	226	9.1%	3	5.3%	702	9.0%
2 p.m.	515	9.8%	189	7.6%	9	15.8%	713	9.1%
3 p.m.	468	8.9%	246	9.9%	5	8.8%	719	9.2%
4 p.m.	457	8.7%	265	10.7%	1	1.8%	723	9.3%
5 p.m.	506	9.6%	241	9.7%	3	5.3%	750	9.6%
6 p.m.	363	6.9%	177	7.1%	7	12.3%	547	7.0%
7 p.m.	188	3.6%	80	3.2%	0	0.0%	268	3.4%
8 p.m.	128	2.4%	66	2.7%	4	7.0%	198	2.5%
9 p.m.	93	1.8%	50	2.0%	3	5.3%	146	1.9%
10 p.m.	60	1.1%	32	1.3%	1	1.8%	93	1.2%
11 p.m.	34	0.6%	20	0.8%	0	0.0%	54	0.7%
Total	5,274	100.0%	2,482	100.0%	57	100.0%	7,813	100.0%



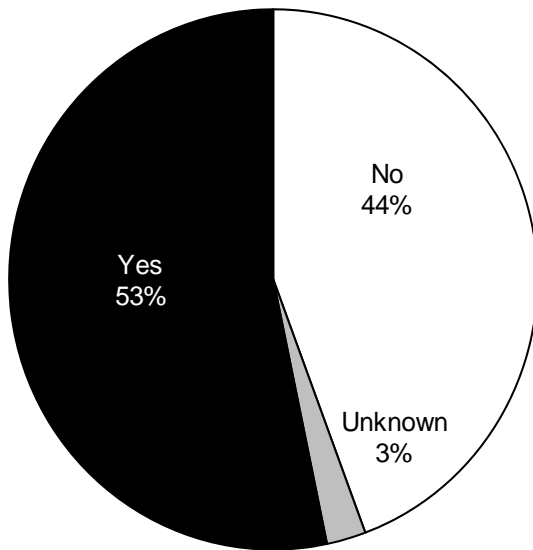
- Older driver total crashes were highest from 12:00 p.m. to 5:59 p.m.
- Compared to all crashes, older driver crashes occurred more often in the daytime (10:00 a.m.-4:59 p.m.).

Crash Conditions

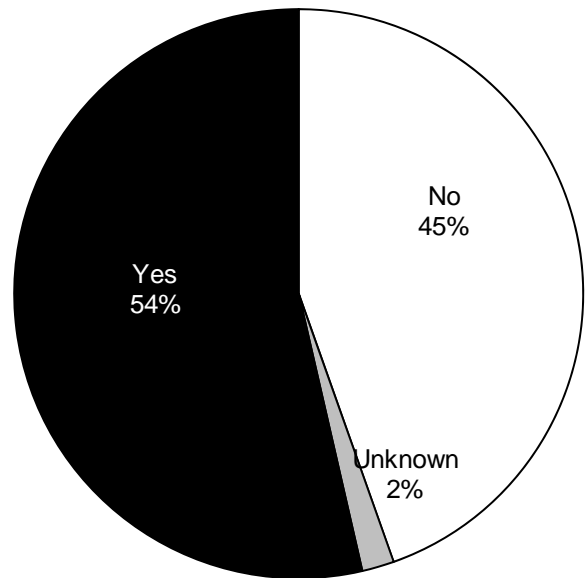
Older Drivers with Contributing Factors in Crashes (Utah 2015)

Older (Age 65+) Drivers/Vehicles								
Driver/Vehicle with a Contributing Factor(s)	PDO Crashes		Injury Crashes		Fatal Crashes		Total	
	#	%	#	%	#	%	#	%
Yes	2,915	52.2%	1,470	56.1%	41	70.7%	4,426	53.6%
No	2,560	45.9%	1,108	42.3%	14	24.1%	3,682	44.6%
Unknown	104	1.9%	44	1.7%	3	5.2%	151	1.8%
Total	5,579	100.0%	2,622	100.0%	58	100.0%	8,259	100.0%

All Drivers



Older Drivers



- Some form of poor driver performance is present in the majority of crashes.
- 53.6% of older drivers had a contributing factor in total crashes.
- Older drivers had a contributing factor in a crash about the same as all drivers.

Crash Conditions

Contributing Factors of Older Driver Crashes (Utah 2015)

Older (Age 65+) Drivers/Vehicles								
Contributing Factors	PDO Crashes		Injury Crashes		Fatal Crashes		Total	
	#	%	#	%	#	%	#	%
Failed to Yield Right of Way	805	19.5%	540	24.0%	11	15.1%	1,356	21.0%
Followed Too Closely	438	10.6%	261	11.6%	0	0.0%	699	10.8%
Failed to Keep in Proper Lane	321	7.8%	170	7.6%	5	6.8%	496	7.7%
Disregard Traffic Signal/Sign	208	5.0%	186	8.3%	8	11.0%	402	6.2%
Other Improper Driving	254	6.2%	126	5.6%	1	1.4%	381	5.9%
Improper Turn	242	5.9%	88	3.9%	2	2.7%	332	5.1%
Driver Distraction	186	4.5%	103	4.6%	3	4.1%	292	4.5%
Speed Too Fast	160	3.9%	109	4.8%	9	12.3%	278	4.3%
Improper Backing	253	6.1%	24	1.1%	0	0.0%	277	4.3%
Improper Lane Change	236	5.7%	34	1.5%	1	1.4%	271	4.2%
Vision Obscured by Weather Condition	152	3.7%	71	3.2%	5	6.8%	228	3.5%
Ran Off Road	76	1.8%	66	2.9%	8	11.0%	150	2.3%
Improper Parking/Stopping	98	2.4%	34	1.5%	1	1.4%	133	2.1%
Driver Illness/Medical	47	1.1%	80	3.6%	2	2.7%	129	2.0%
Hit and Run	85	2.1%	22	1.0%	0	0.0%	107	1.7%
Driver Asleep/Fatigue	41	1.0%	45	2.0%	4	5.5%	90	1.4%
Overcorrected	41	1.0%	38	1.7%	7	9.6%	86	1.3%
Vision Obscured by Moving Vehicle	55	1.3%	30	1.3%	0	0.0%	85	1.3%
Swerved or Evasive Action	48	1.2%	31	1.4%	0	0.0%	79	1.2%
Vision Obscured by Glare	45	1.1%	28	1.2%	0	0.0%	73	1.1%
Vehicle Other Defective Condition	42	1.0%	26	1.2%	0	0.0%	68	1.1%
Other Driver Condition	38	0.9%	26	1.2%	0	0.0%	64	1.0%
Vision Obscured by Parked Vehicle	33	0.8%	16	0.7%	0	0.0%	49	0.8%
Vision Obscured by Other	24	0.6%	17	0.8%	1	1.4%	42	0.7%
Driving Under the Influence	19	0.5%	16	0.7%	0	0.0%	35	0.5%
Improper Passing	30	0.7%	5	0.2%	0	0.0%	35	0.5%
Vehicle Brakes	20	0.5%	10	0.4%	0	0.0%	30	0.5%
Vehicle Cargo	24	0.6%	1	0.0%	0	0.0%	25	0.4%
Vehicle Tires	21	0.5%	3	0.1%	1	1.4%	25	0.4%
Disregard Road Markings	16	0.4%	4	0.2%	0	0.0%	20	0.3%
Driver Emotional Prior to Crash	15	0.4%	5	0.2%	0	0.0%	20	0.3%
Wrong Side/Wrong Way	9	0.2%	9	0.4%	2	2.7%	20	0.3%
Vision Obscured by Vegetation	14	0.3%	2	0.1%	1	1.4%	17	0.3%
Vision Obscured by Building, Sign, etc.	7	0.2%	8	0.4%	0	0.0%	15	0.2%
Improper Signal	10	0.2%	4	0.2%	0	0.0%	14	0.2%
Reckless/Aggressive Driving	8	0.2%	4	0.2%	0	0.0%	12	0.2%
Windshield or Other Window Obscured	4	0.1%	7	0.3%	1	1.4%	12	0.2%
Total	4,125	100.0%	2,249	100.0%	73	100.0%	6,447	100.0%

- Some form of poor driver performance is present in the majority of crashes. The leading contributing factors for all older driver crashes were failed to yield right of way (21.0%), followed too closely (10.8%), and failed to keep in proper lane (7.7%).
- The leading contributing factors in fatal older driver crashes were failed too yield right of way (15.1%) and speed too fast (12.3%).
- Compared to drivers of all ages, older drivers were more likely to have a contributing factor of failure to yield right of way, disregard traffic signal/sign, improper turn, improper lane change, and improper backing.