

Pedestrians



2

Section 9: Pedestrians

0

Trends

Pedestrians in Crashes 2003-2012.....	108
Pedestrian-Motor Vehicle Crashes 2003-2012	109

Crash Conditions

Pedestrians in Crashes by County.....	110
Injury Severity	110
Pedestrian Age	111
Driver Age.....	111
Pedestrian Gender.....	112
Driver Gender	112
Month.....	112
Day of Week	112
Hour	113
Pedestrian Contributing Factors	113
Vehicle Maneuver	114
Speed Limit.....	114
Travel Speed	114
Contributing Factors.....	115

1

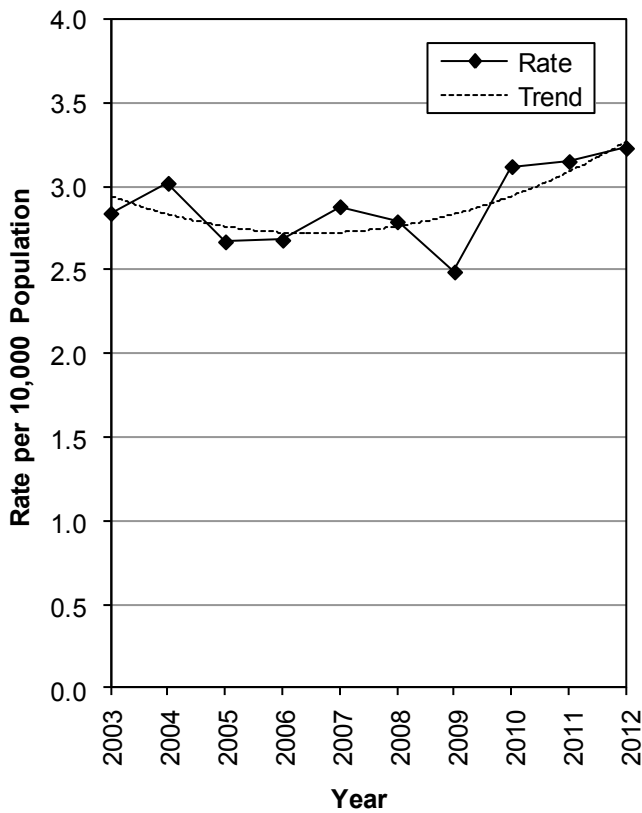
2

Trends

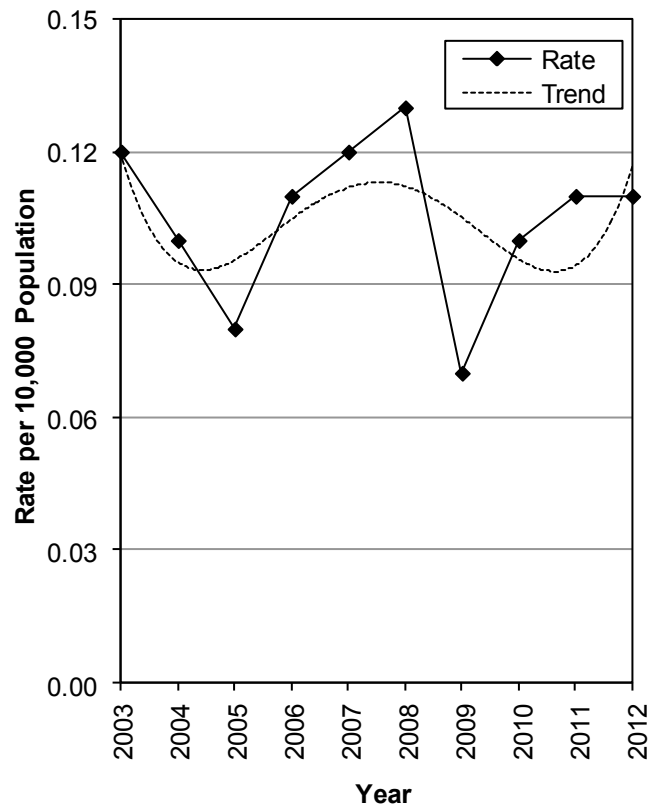
Pedestrians in Crashes (Utah 2003-2012)

Pedestrians								
Year	Non-Injured		Injured		Killed		Total	
	#	Rate per 10,000 Pop.	#	Rate per 10,000 Pop.	#	Rate per 10,000 Pop.	#	Rate per 10,000 Pop.
2003	42	0.18	616	2.60	28	0.12	686	2.89
2004	45	0.19	675	2.78	25	0.10	745	3.07
2005	35	0.14	626	2.50	20	0.08	681	2.72
2006	55	0.21	617	2.39	29	0.11	701	2.72
2007	65	0.25	681	2.58	32	0.12	778	2.95
2008	97	0.36	638	2.37	34	0.13	769	2.86
2009	65	0.24	613	2.24	20	0.07	698	2.56
2010	76	0.27	759	2.74	28	0.10	863	3.11
2011	84	0.30	770	2.74	32	0.11	886	3.15
2012	78	0.27	813	2.85	31	0.11	922	3.23
Total	642	0.24	6,808	2.58	279	0.11	7,729	2.93

Pedestrian Crash Rates Per Population (Utah 2003-2012)



Pedestrian Death Rates Per Population (Utah 2003-2012)

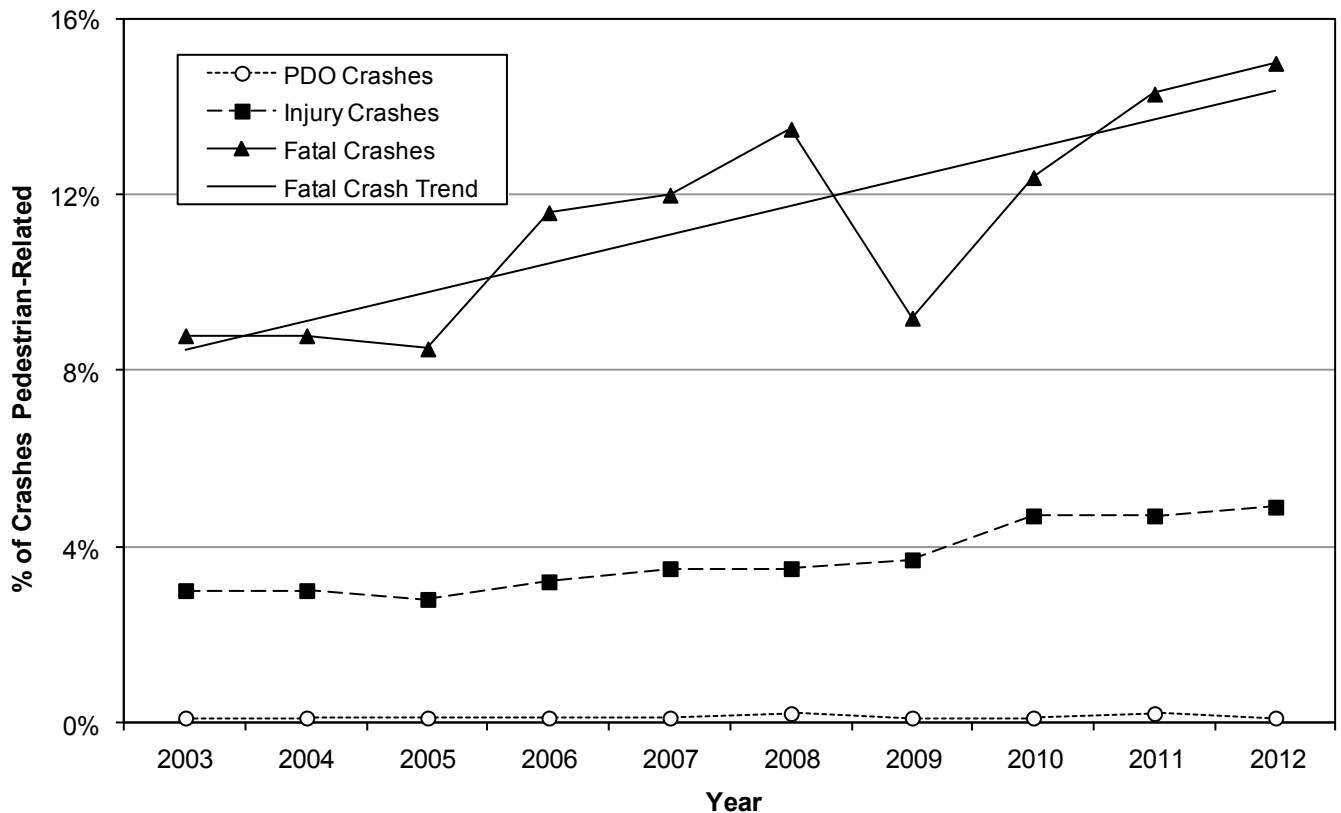


- In 2012, the total rate per population of pedestrians in crashes increased 3% from 2011. This was the highest rate in the last 10 years.
- 2009 had the lowest rate per population of total pedestrians in crashes.
- The pedestrian death rate per population decreased slightly in 2012 from 2011.
- 2008 had the highest rate per population of pedestrians killed in crashes (0.13), while 2009 had the lowest rate (0.07).

Pedestrian-Motor Vehicle Crashes (Utah 2003-2012)

Pedestrian-Motor Vehicle Crashes												
Year	Property Damage Only			Injury			Fatal			Total		
	All	Pedestrian		All	Pedestrian		All	Pedestrian		All	Pedestrian	
	#	#	%	#	#	%	#	#	%	#	#	%
2003	31,842	36	0.1%	18,285	540	3.0%	262	23	8.8%	50,389	599	1.2%
2004	34,222	37	0.1%	19,423	583	3.0%	260	23	8.8%	53,905	643	1.2%
2005	35,158	28	0.1%	19,545	552	2.8%	235	20	8.5%	54,938	600	1.1%
2006	37,749	33	0.1%	18,189	580	3.2%	249	29	11.6%	56,187	642	1.1%
2007	42,368	40	0.1%	18,619	653	3.5%	258	31	12.0%	61,245	724	1.2%
2008	38,997	63	0.2%	17,125	605	3.5%	245	33	13.5%	56,367	701	1.2%
2009	35,398	43	0.1%	15,752	588	3.7%	217	20	9.2%	51,367	651	1.3%
2010	34,155	47	0.1%	14,995	707	4.7%	218	27	12.4%	49,368	781	1.6%
2011	36,418	56	0.2%	15,645	732	4.7%	224	32	14.3%	52,287	820	1.6%
2012	34,635	44	0.1%	15,765	779	4.9%	200	30	15.0%	50,600	853	1.7%
Total	360,942	427	0.1%	173,343	6,319	3.6%	2,368	268	11.3%	536,653	7,014	1.3%

Percent of Crashes Pedestrian-Related (Utah 2003-2012)



- The 10-year trend shows that pedestrian-motor vehicle crashes represent 0.1% of property damage only crashes, 3.6% of injury crashes, and 11.3% of fatal crashes.
- Pedestrians are over-represented in fatal crashes accounting for 11.3% of fatal crashes compared to 1.3% of total crashes.
- The percent of injury crashes that involved a pedestrian increased for the seventh year in a row.
- During the last 10 years, the highest percent of fatal crashes involving pedestrians occurred in 2012 (15.0%).

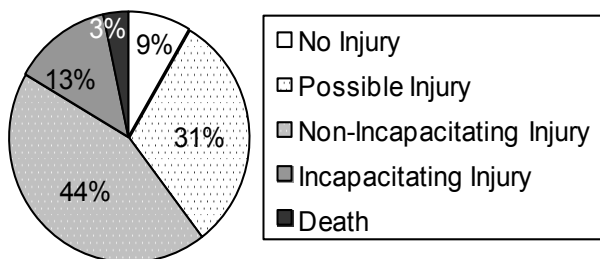
Pedestrian-Motor Vehicle Crash Conditions

Pedestrians in Crashes by County (Utah 2012)

County	Pedestrians							
	Non-Injured		Injured		Killed		Total	
	#	Rate per 10,000 Pop.	#	Rate per 10,000 Pop.	#	Rate per 10,000 Pop.	#	Rate per 10,000 Pop.
Piute	0	0.00	2	13.01	0	0.00	2	13.01
Tooele	2	0.33	24	4.00	1	0.17	27	4.50
Salt Lake	33	0.31	424	4.00	19	0.18	476	4.49
Grand	1	1.06	3	3.18	0	0.00	4	4.25
Weber	7	0.30	72	3.06	2	0.08	81	3.44
Davis	12	0.38	86	2.71	4	0.13	102	3.22
Carbon	1	0.47	5	2.33	0	0.00	6	2.80
Cache	5	0.43	23	1.99	0	0.00	28	2.42
Utah	12	0.22	111	2.05	3	0.06	126	2.33
Washington	1	0.07	32	2.23	0	0.00	33	2.30
Duchesne	2	1.02	2	1.02	0	0.00	4	2.04
Iron	1	0.21	7	1.49	0	0.00	8	1.71
Beaver	0	0.00	1	1.52	0	0.00	1	1.52
Sevier	0	0.00	3	1.43	0	0.00	3	1.43
Sanpete	0	0.00	4	1.43	0	0.00	4	1.43
San Juan	0	0.00	1	0.66	1	0.66	2	1.31
Summit	0	0.00	4	1.06	0	0.00	4	1.06
Morgan	0	0.00	1	1.01	0	0.00	1	1.01
Juab	0	0.00	1	0.96	0	0.00	1	0.96
Emery	0	0.00	1	0.92	0	0.00	1	0.92
Millard	0	0.00	1	0.79	0	0.00	1	0.79
Box Elder	0	0.00	4	0.79	0	0.00	4	0.79
Uintah	0	0.00	1	0.29	1	0.29	2	0.58
Wasatch	1	0.39	0	0.00	0	0.00	1	0.39
Daggett	0	0.00	0	0.00	0	0.00	0	0.00
Garfield	0	0.00	0	0.00	0	0.00	0	0.00
Kane	0	0.00	0	0.00	0	0.00	0	0.00
Rich	0	0.00	0	0.00	0	0.00	0	0.00
Wayne	0	0.00	0	0.00	0	0.00	0	0.00
Statewide	78	0.27	813	2.85	31	0.11	922	3.23

- Urban areas (3.51) had a much higher total pedestrian-motor vehicle crash rate per 10,000 population than rural areas (1.73).
- Piute (13.01), Tooele (4.50), and Salt Lake (4.49) counties had the highest rates of pedestrians in crashes per 10,000 population.
- Daggett, Garfield, Kane, Rich, and Wayne counties had no pedestrians in crashes.

Injury Severity of Pedestrians in Crashes (Utah 2012)



- 88.2% of pedestrians in crashes sustained an injury compared to 17.8% of all persons in crashes.
- The percentage of pedestrians killed in crashes (3.4%) was much higher than the percentage for all persons killed in motor vehicle crashes (0.2%).
- Pedestrian crashes were 10.6 times more likely to result in a death than other motor vehicle crashes.

Pedestrian-Motor Vehicle Crash Conditions

Age of Pedestrians in Crashes (Utah 2012)

- Overall, the largest percentages of pedestrians in crashes were aged 10-24 years (37.8% of known).
- The highest percentage of pedestrian deaths occurred in the 50-54 year age group (25.8%).
- The average age of a pedestrian in a crash was 31 years. The average age of a pedestrian killed was 43 years.

Pedestrians								
Age	Non-Injured		Injured		Killed		Total	
	#	%	#	%	#	%	#	%
0-4	6	9.7%	24	3.0%	2	6.5%	32	3.6%
5-9	5	8.1%	56	7.1%	1	3.2%	62	7.0%
10-14	6	9.7%	87	11.1%	1	3.2%	94	10.7%
15-19	14	22.6%	119	15.1%	3	9.7%	136	15.5%
20-24	6	9.7%	96	12.2%	1	3.2%	103	11.7%
25-29	3	4.8%	64	8.1%	2	6.5%	69	7.8%
30-34	1	1.6%	52	6.6%	0	0.0%	53	6.0%
35-39	3	4.8%	50	6.4%	4	12.9%	57	6.5%
40-44	7	11.3%	40	5.1%	0	0.0%	47	5.3%
45-49	3	4.8%	45	5.7%	1	3.2%	49	5.6%
50-54	3	4.8%	41	5.2%	8	25.8%	52	5.9%
55-59	2	3.2%	43	5.5%	2	6.5%	47	5.3%
60-64	1	1.6%	20	2.5%	2	6.5%	23	2.6%
65-69	1	1.6%	12	1.5%	0	0.0%	13	1.5%
70-74	1	1.6%	18	2.3%	0	0.0%	19	2.2%
75-79	0	0.0%	10	1.3%	0	0.0%	10	1.1%
80-84	0	0.0%	4	0.5%	2	6.5%	6	0.7%
85+	0	0.0%	6	0.8%	2	6.5%	8	0.9%
Unknown		0.0%		0.0%	0	0.0%	0	0.0%
Total	62	100.0%	787	100.0%	31	100.0%	880	100.0%

Driver Age (Utah 2012)

Drivers (Pedestrian-Motor Vehicle Crashes)								
Age	PDO Crashes		Injury Crashes		Fatal Crashes		Total	
	#	%	#	%	#	%	#	%
<15	0	0.0%	0	0.0%	0	0.0%	0	0.0%
15-19	0	0.0%	72	8.9%	3	9.1%	75	8.4%
20-24	6	10.9%	92	11.4%	4	12.1%	102	11.4%
25-29	6	10.9%	89	11.0%	4	12.1%	99	11.1%
30-34	4	7.3%	81	10.0%	3	9.1%	88	9.8%
35-39	7	12.7%	53	6.6%	4	12.1%	64	7.2%
40-44	6	10.9%	56	6.9%	2	6.1%	64	7.2%
45-49	5	9.1%	45	5.6%	4	12.1%	54	6.0%
50-54	3	5.5%	51	6.3%	1	3.0%	55	6.1%
55-59	4	7.3%	43	5.3%	2	6.1%	49	5.5%
60-64	2	3.6%	30	3.7%	1	3.0%	33	3.7%
65-69	0	0.0%	27	3.3%	1	3.0%	28	3.1%
70-74	1	1.8%	23	2.9%	2	6.1%	26	2.9%
75-79	0	0.0%	4	0.5%	0	0.0%	4	0.4%
80-84	2	3.6%	8	1.0%	1	3.0%	11	1.2%
85+	0	0.0%	5	0.6%	0	0.0%	5	0.6%
Unknown	9	16.4%	128	15.9%	1	3.0%	138	15.4%
Total	55	100.0%	807	100.0%	33	100.0%	895	100.0%

- Nearly half (48.1% of known) of drivers in total pedestrian-motor vehicle crashes were under 35 years.
- The percentage of drivers in fatal pedestrian-motor vehicle crashes was highest for those aged 20-49 years.
- The average age of a driver was 39 years. The average age of a driver in a fatal crash was 40 years.

Pedestrian-Motor Vehicle Crash Conditions

Gender of Pedestrians in Crashes (Utah 2012)

Pedestrians								
Gender	Non-Injured		Injured		Killed		Total	
	#	%	#	%	#	%	#	%
Male	38	48.7%	474	58.3%	19	61.3%	531	57.6%
Female	24	30.8%	324	39.9%	12	38.7%	360	39.0%
Unknown	16	20.5%	15	1.8%	0	0.0%	31	3.4%
Total	78	100.0%	813	100.0%	31	100.0%	922	100.0%

- The majority of all pedestrians hit (57.6%) and pedestrians killed (61.3%) in crashes were male.

Driver Gender (Utah 2012)

Drivers (Pedestrian-Motor Vehicle Crashes)								
Gender	PDO Crashes		Injury Crashes		Fatal Crashes		Total	
	#	%	#	%	#	%	#	%
Male	22	40.0%	410	50.8%	21	63.6%	453	50.6%
Female	29	52.7%	314	38.9%	11	33.3%	354	39.6%
Unknown	4	7.3%	83	10.3%	1	3.0%	88	9.8%
Total	55	100.0%	807	100.0%	33	100.0%	895	100.0%

- The majority of drivers in total pedestrian crashes (56.1% of known) and fatal crashes (65.6%) were male.

Pedestrian-Motor Vehicle Crashes by Month (Utah 2012)

Pedestrians								
Month	Non-Injured		Injured		Killed		Total	
	#	Rate per Day	#	Rate per Day	#	Rate per Day	#	Rate per Day
January	7	0.23	74	2.39	0	0.00	81	2.61
February	2	0.07	68	2.34	2	0.07	72	2.48
March	13	0.42	64	2.06	5	0.16	82	2.65
April	9	0.30	61	2.03	3	0.10	73	2.43
May	5	0.16	62	2.00	2	0.06	69	2.23
June	9	0.30	70	2.33	0	0.00	79	2.63
July	2	0.06	41	1.32	2	0.06	45	1.45
August	3	0.10	55	1.77	1	0.03	59	1.90
September	9	0.30	82	2.73	4	0.13	95	3.17
October	4	0.13	73	2.35	6	0.19	83	2.68
November	7	0.23	83	2.77	3	0.10	93	3.10
December	8	0.26	80	2.58	3	0.10	91	2.94
Total	78	0.21	813	2.22	31	0.08	922	2.52

- September, November, and December had the highest rates per day of total pedestrian-motor vehicle crashes.
- October, March, and September had the highest rates per day of pedestrian deaths.

Pedestrian-Motor Vehicle Crashes by Day of Week (Utah 2012)

Pedestrians								
Day of Week	Non-Injured		Injured		Killed		Total	
	#	%	#	%	#	%	#	%
Sunday	9	11.5%	60	7.4%	4	12.9%	73	7.9%
Monday	14	17.9%	105	12.9%	4	12.9%	123	13.3%
Tuesday	8	10.3%	122	15.0%	6	19.4%	136	14.8%
Wednesday	14	17.9%	144	17.7%	7	22.6%	165	17.9%
Thursday	15	19.2%	131	16.1%	3	9.7%	149	16.2%
Friday	11	14.1%	140	17.2%	1	3.2%	152	16.5%
Saturday	7	9.0%	111	13.7%	6	19.4%	124	13.4%
Total	78	100.0%	813	100.0%	31	100.0%	922	100.0%

- The highest percentage of total pedestrian-motor vehicle crashes (17.9%) occurred on Wednesday.

Pedestrian-Motor Vehicle Crash Conditions

Pedestrian-Motor Vehicle Crashes by Hour (Utah 2012)

Hour	Pedestrians							
	Non-Injured		Injured		Killed		Total	
	#	%	#	%	#	%	#	%
Midnight	2	2.6%	15	1.8%	2	6.5%	19	2.1%
1 a.m.	0	0.0%	8	1.0%	0	0.0%	8	0.9%
2 a.m.	0	0.0%	6	0.7%	2	6.5%	8	0.9%
3 a.m.	1	1.3%	4	0.5%	0	0.0%	5	0.5%
4 a.m.	0	0.0%	3	0.4%	0	0.0%	3	0.3%
5 a.m.	0	0.0%	9	1.1%	0	0.0%	9	1.0%
6 a.m.	0	0.0%	19	2.3%	1	3.2%	20	2.2%
7 a.m.	0	0.0%	47	5.8%	4	12.9%	51	5.5%
8 a.m.	2	2.6%	43	5.3%	0	0.0%	45	4.9%
9 a.m.	1	1.3%	21	2.6%	0	0.0%	22	2.4%
10 a.m.	2	2.6%	26	3.2%	1	3.2%	29	3.1%
11 a.m.	5	6.4%	33	4.1%	0	0.0%	38	4.1%
Noon	4	5.1%	38	4.7%	0	0.0%	42	4.6%
1 p.m.	6	7.7%	33	4.1%	1	3.2%	40	4.3%
2 p.m.	7	9.0%	56	6.9%	0	0.0%	63	6.8%
3 p.m.	7	9.0%	63	7.7%	1	3.2%	71	7.7%
4 p.m.	7	9.0%	52	6.4%	3	9.7%	62	6.7%
5 p.m.	4	5.1%	76	9.3%	2	6.5%	82	8.9%
6 p.m.	7	9.0%	62	7.6%	3	9.7%	72	7.8%
7 p.m.	9	11.5%	61	7.5%	0	0.0%	70	7.6%
8 p.m.	5	6.4%	50	6.2%	5	16.1%	60	6.5%
9 p.m.	2	2.6%	49	6.0%	4	12.9%	55	6.0%
10 p.m.	5	6.4%	23	2.8%	2	6.5%	30	3.3%
11 p.m.	2	2.6%	16	2.0%	0	0.0%	18	2.0%
Total	78	100.0%	813	100.0%	31	100.0%	922	100.0%

- Total pedestrian-motor vehicle crashes were highest between 2:00 p.m. and 8:59 p.m.
- Fatal pedestrian-motor vehicle crashes were highest during the 8:00 p.m. hour.

Contributing Factors of Pedestrians in Crashes (Utah 2012)

Contributing Factors	Pedestrians							
	Non-Injured		Injured		Killed		Total	
	#	%	#	%	#	%	#	%
None	39	50.0%	389	47.8%	11	35.5%	439	47.6%
Improper Crossing	10	12.8%	91	11.2%	3	9.7%	104	11.3%
Darting	3	3.8%	47	5.8%	4	12.9%	54	5.9%
In Roadway (standing, kneeling, lying)	3	3.8%	33	4.1%	2	6.5%	38	4.1%
Not Visible	2	2.6%	35	4.3%	0	0.0%	37	4.0%
Inattentive	3	3.8%	26	3.2%	1	3.2%	30	3.3%
Failure to Obey Traffic Signs/Signals	1	1.3%	27	3.3%	1	3.2%	29	3.1%
Failure to Yield Right of Way	2	2.6%	10	1.2%	7	22.6%	19	2.1%
Other	2	2.6%	48	5.9%	0	0.0%	50	5.4%
Unknown	13	16.7%	107	13.2%	2	6.5%	122	13.2%
Total	78	100.0%	813	100.0%	31	100.0%	922	100.0%

- Other contributing factors to consider are drivers, roadways (such as high speeds, traffic volumes, number of lanes to cross, inadequate pedestrian crossings), and vehicles (such as vehicle size).

- Improper crossing, darting, and in roadway were the leading contributing factors for peds in total crashes.
- Failure to yield and darting were the leading factors for peds killed.
- No contributing factors were listed for 37.9% of the peds killed and 54.9% (of known) of total pedestrians.

Pedestrian-Motor Vehicle Crash Conditions

Vehicle Maneuver Prior to Crash (Utah 2012)

Vehicles (Pedestrian-Motor Vehicle Crashes)								
Vehicle Maneuver	PDO Crashes		Injury Crashes		Fatal Crashes		Total	
	#	%	#	%	#	%	#	%
Straight Ahead	24	42.1%	354	41.7%	27	81.8%	405	43.1%
Turning Left	8	14.0%	137	16.1%	2	6.1%	147	15.7%
Turning Right	4	7.0%	130	15.3%	1	3.0%	135	14.4%
Backing	7	12.3%	58	6.8%	3	9.1%	68	7.2%
Parked/Parking	2	3.5%	44	5.2%	0	0.0%	46	4.9%
Stopped/Slowing in Traffic Lane	3	5.3%	26	3.1%	0	0.0%	29	3.1%
Entering Traffic Lane	1	1.8%	6	0.7%	0	0.0%	7	0.7%
Changing Lanes	0	0.0%	6	0.7%	0	0.0%	6	0.6%
Making U-Turn	0	0.0%	4	0.5%	0	0.0%	4	0.4%
Other	0	0.0%	21	2.5%	0	0.0%	21	2.2%
Unknown	8	14.0%	63	7.4%	0	0.0%	71	7.6%
Total	57	100.0%	849	100.0%	33	100.0%	939	100.0%

- The leading vehicle maneuvers prior to the crash were straight ahead (43.1%), turning left (15.7%), and turning right (14.4%).

Pedestrian-Motor Vehicle Crashes by Speed Limit (Utah 2012)

Vehicles (Pedestrian-Motor Vehicle Crashes)								
Speed Limit	PDO Crashes		Injury Crashes		Fatal Crashes		Total	
	#	%	#	%	#	%	#	%
5-15 MPH	4	7.0%	40	4.7%	0	0.0%	44	4.7%
20-25 MPH	10	17.5%	192	22.6%	4	12.1%	206	21.9%
30-35 MPH	10	17.5%	224	26.4%	14	42.4%	248	26.4%
40-45 MPH	10	17.5%	105	12.4%	9	27.3%	124	13.2%
50-55 MPH	2	3.5%	18	2.1%	1	3.0%	21	2.2%
60-65 MPH	1	1.8%	10	1.2%	3	9.1%	14	1.5%
70+ MPH	0	0.0%	2	0.2%	0	0.0%	2	0.2%
Unknown	20	35.1%	258	30.4%	2	6.1%	280	29.8%
Total	57	100.0%	849	100.0%	33	100.0%	939	100.0%

- The majority (87.7% of known) of total pedestrian crashes occurred where the speed limit was 20-45 MPH.

Travel Speed of Vehicles in Pedestrian Crashes (Utah 2012)

Vehicles (Pedestrian-Motor Vehicle Crashes)								
Travel Speed	PDO Crashes		Injury Crashes		Fatal Crashes		Total	
	#	%	#	%	#	%	#	%
Parked	2	3.5%	36	4.2%	0	0.0%	38	4.0%
Stopped	4	7.0%	28	3.3%	0	0.0%	32	3.4%
1-9 MPH	12	21.1%	190	22.4%	5	15.2%	207	22.0%
10-19 MPH	7	12.3%	125	14.7%	1	3.0%	133	14.2%
20-29 MPH	3	5.3%	75	8.8%	3	9.1%	81	8.6%
30-39 MPH	2	3.5%	67	7.9%	5	15.2%	74	7.9%
40-49 MPH	0	0.0%	29	3.4%	8	24.2%	37	3.9%
50-59 MPH	1	1.8%	7	0.8%	2	6.1%	10	1.1%
60-69 MPH	0	0.0%	3	0.4%	2	6.1%	5	0.5%
70+ MPH	0	0.0%	1	0.1%	0	0.0%	1	0.1%
Unknown	26	45.6%	288	33.9%	7	21.2%	321	34.2%
Total	57	100.0%	849	100.0%	33	100.0%	939	100.0%

- The higher the speed of the vehicle the more likely the pedestrian was injured or killed in a crash.
- Pedestrians hit by a vehicle traveling 30 MPH or higher were 7.6 times more likely to die.

Pedestrian-Motor Vehicle Crash Conditions

Contributing Factors in Pedestrian Crashes (Utah 2012)

Drivers/Vehicles (Pedestrian-Motor Vehicle Crashes)								
Contributing Factors	PDO Crashes		Injury Crashes		Fatal Crashes		Total	
	#	%	#	%	#	%	#	%
Failed to Yield Right of Way	12	27.9%	255	31.9%	7	21.2%	274	31.3%
Hit and Run	5	11.6%	88	11.0%	2	6.1%	95	10.9%
Other Improper Driving	1	2.3%	75	9.4%	0	0.0%	76	8.7%
Driver Distraction	3	7.0%	58	7.3%	3	9.1%	64	7.3%
Improper Backing	4	9.3%	31	3.9%	3	9.1%	38	4.3%
Vision Obscured by Glare	1	2.3%	35	4.4%	1	3.0%	37	4.2%
Failed to Keep in Proper Lane	0	0.0%	23	2.9%	2	6.1%	25	2.9%
Vision Obscured by Weather Condition	0	0.0%	23	2.9%	1	3.0%	24	2.7%
Speed Too Fast	3	7.0%	14	1.8%	6	18.2%	23	2.6%
Vision Obscured by Other	0	0.0%	20	2.5%	0	0.0%	20	2.3%
Improper Turn	1	2.3%	17	2.1%	0	0.0%	18	2.1%
Followed Too Closely	5	11.6%	12	1.5%	0	0.0%	17	1.9%
Vehicle Other Defective Condition	1	2.3%	16	2.0%	0	0.0%	17	1.9%
Vision Obscured by Parked Vehicle	0	0.0%	16	2.0%	0	0.0%	16	1.8%
Driving Under the Influence	0	0.0%	12	1.5%	3	9.1%	15	1.7%
Reckless/Aggressive Driving	2	4.7%	11	1.4%	1	3.0%	14	1.6%
Vision Obscured by Moving Vehicle	0	0.0%	14	1.8%	0	0.0%	14	1.6%
Disregard Traffic Signal/Sign	0	0.0%	11	1.4%	1	3.0%	12	1.4%
Driver Emotional Prior to Crash	1	2.3%	9	1.1%	0	0.0%	10	1.1%
Improper Parking/Stopping	0	0.0%	9	1.1%	0	0.0%	9	1.0%
Other Driver Condition	1	2.3%	8	1.0%	0	0.0%	9	1.0%
Ran Off Road	1	2.3%	4	0.5%	2	6.1%	7	0.8%
Windshield or Other Window Obscured	0	0.0%	7	0.9%	0	0.0%	7	0.8%
Driver Asleep/Fatigue	0	0.0%	5	0.6%	0	0.0%	5	0.6%
Vehicle Windows/Windshield	1	2.3%	4	0.5%	0	0.0%	5	0.6%
Vehicle Brakes	0	0.0%	3	0.4%	1	3.0%	4	0.5%
Vision Obscured by Building, Sign	0	0.0%	4	0.5%	0	0.0%	4	0.5%
Improper Passing	1	2.3%	2	0.3%	0	0.0%	3	0.3%
Swerved or Evasive Action	0	0.0%	3	0.4%	0	0.0%	3	0.3%
Wrong Side/Wrong Way	0	0.0%	3	0.4%	0	0.0%	3	0.3%
Disregard Road Markings	0	0.0%	2	0.3%	0	0.0%	2	0.2%
Driver Illness/Medical	0	0.0%	2	0.3%	0	0.0%	2	0.2%
Vision Obscured by Vegetation	0	0.0%	2	0.3%	0	0.0%	2	0.2%
Overcorrected	0	0.0%	1	0.1%	0	0.0%	1	0.1%
Total	43	100.0%	799	100.0%	33	100.0%	875	100.0%

- Failed to yield right of way (31.3%), hit and run (10.9%), and driver distraction (7.3%) were the leading contributing factors in total pedestrian-motor vehicle crashes.
- Failed to yield right of way (21.2%) and speed too fast (18.2%) were the leading contributing factors in fatal pedestrian-motor vehicle crashes.

Blank page

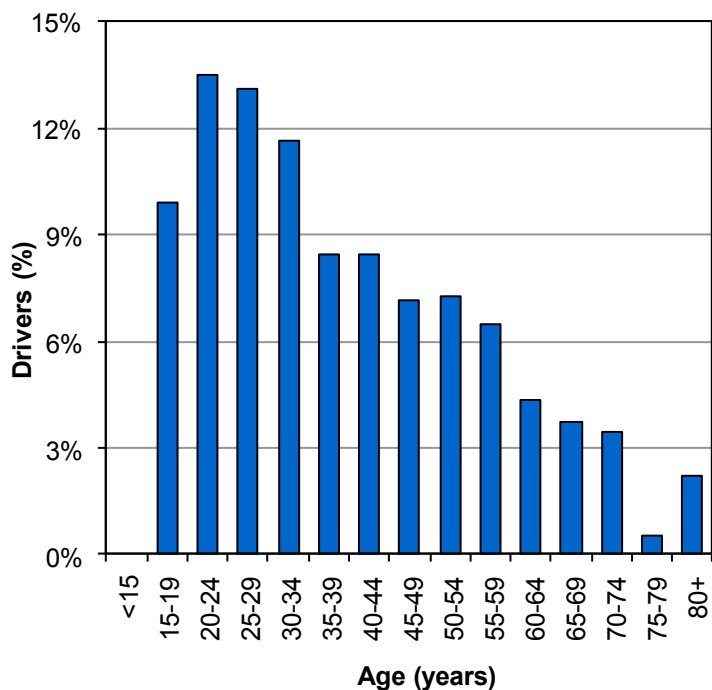
Pedestrians



Did you know in 2012:

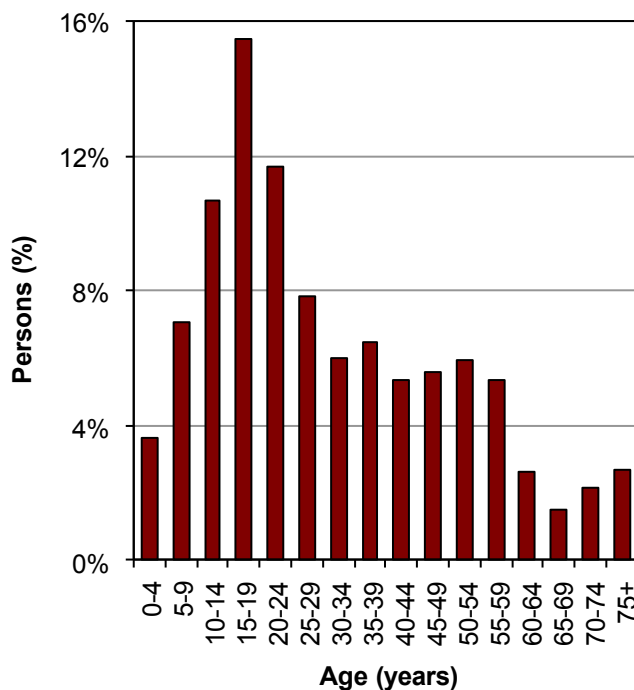
- 922 pedestrians were struck by motor vehicles; 813 were injured and 31 were killed.
- Pedestrians accounted for 1% of persons in crashes and 14% of deaths.
- Pedestrian crashes were 10.6 times more likely to result in a death than other crashes.

Age of Drivers in Pedestrian-Motor Vehicle Crashes (Utah 2012)



- One-half (48%) of drivers in pedestrian-motor vehicle crashes were under 35 years.

Age of Pedestrians in Pedestrian-Motor Vehicle Crashes (Utah 2012)



- One-half (49%) of the pedestrians in crashes were under 25 years of age.

Leading Contributing Factors of Drivers in Pedestrian Crashes (Utah 2012)

1. Failed to Yield Right of Way (32%)
2. Hit and Run (11%)
3. Driver Distraction (8%)
4. Improper Backing (4%)
5. Vision Obscured by Glare (4%)



Leading Contributing Factors of Pedestrians in Crashes (Utah 2012)

1. Improper Crossing (13%)
 2. Darting (7%)
 3. In Roadway Improperly (5%)
- 55% of pedestrians had no contributing factor in the crash.

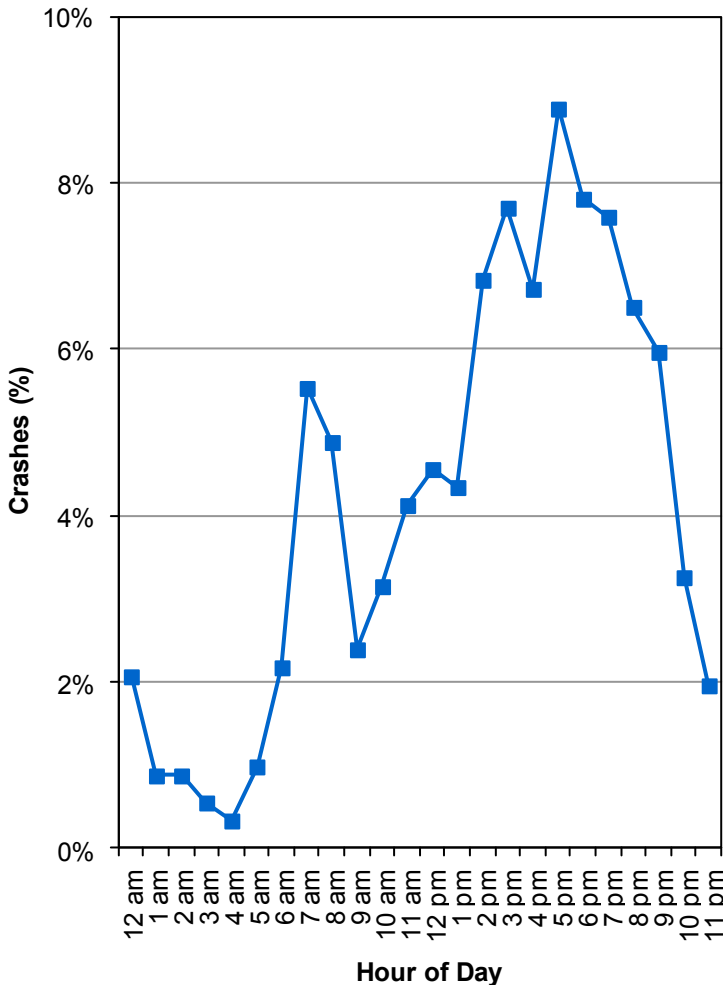


Pedestrians



One-third (33%) of drivers who hit pedestrians were turning. Drivers need to watch for pedestrians before turning.

Pedestrian-Motor Vehicle Crashes by Hour (Utah 2012)

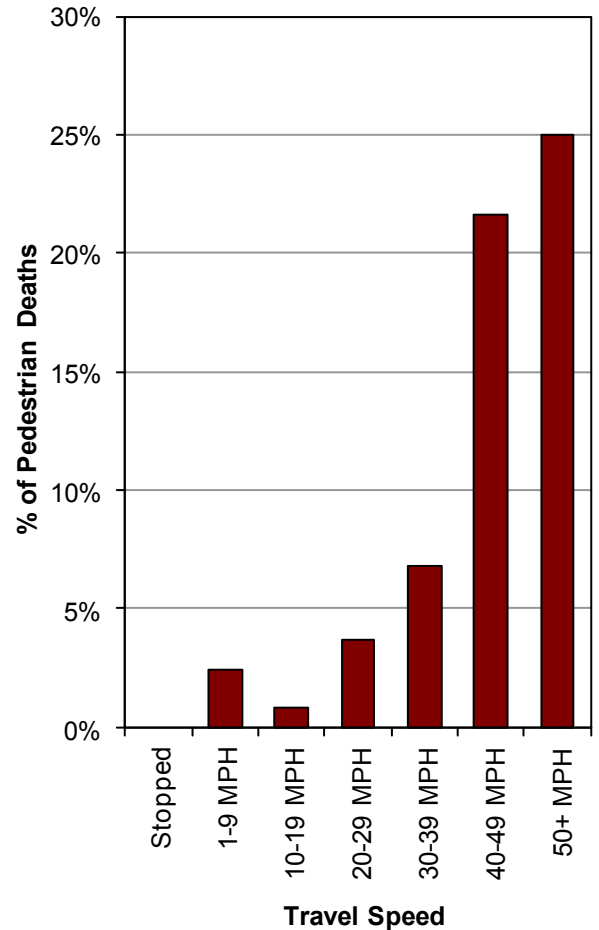


- Pedestrian-motor vehicle crashes occurred most often between 2:00 p.m.-9:59 p.m.

Location of Pedestrians in Crashes (Utah 2012)

1. Marked Crosswalk (41%)
2. In Roadway Not at Intersection/Crosswalk (28%)
3. Shoulder (8%)
4. Unmarked Crosswalk (7%)
5. Sidewalk (5%)

Percent of Pedestrian Deaths by Vehicle Travel Speed (Utah 2012)



- The higher the speed of the vehicle the more likely the pedestrian was injured or killed in a crash.
- Pedestrians hit by a vehicle traveling 40 MPH or higher were 10.7 times more likely to die.

Motor Vehicle Action Prior to Crash (Utah 2012)

1. Straight Ahead (47%)
2. Turning Left (17%)
3. Turning Right (16%)
4. Backing (8%)
5. Parking (5%)

