

# Trends



2

## Trends

Utah vs. U.S. Death Rate per Miles Traveled.....	2
Crashes 2006-2015.....	3
Persons Involved 2006-2015.....	4
Serious Injuries 2006-2015 .....	5
Deaths by Month 2006-2015 .....	6
Deaths by Day of Week 2006-2015 .....	7
Deaths by Hour 2006-2015 .....	8
Deaths by Day of Week and Hour 2006-2015.....	9
Serious Injuries by Person Type 2006-2015 .....	9
Deaths by Person Type 2006-2015.....	10
Deaths by Contributing Factors 2006-2015.....	10
Deaths by County 2006-2015.....	11
Crashes by County 2006-2015.....	12
Holiday Deaths 2006-2015.....	13
Animal Crashes by Rural/Urban 2006-2015.....	14



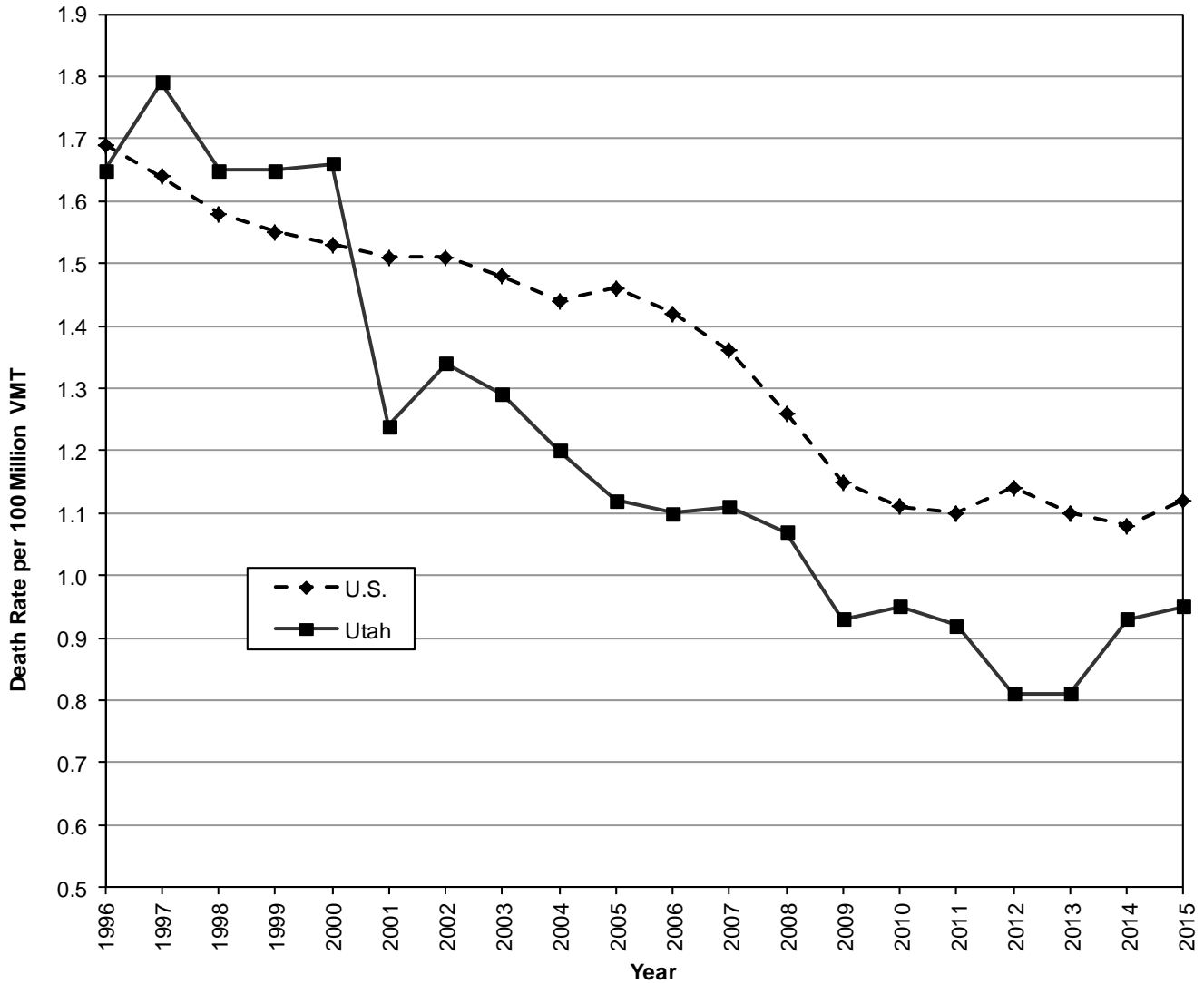
1

5

# Deaths

## Utah vs. U.S. Death Rate per 100 Million Vehicle Miles Traveled, 1996-2015

Death Rate per Miles Traveled																				
	1996	1997	1998	1999	2000	2001	2002	2003	2004	2005	2006	2007	2008	2009	2010	2011	2012	2013	2014	2015
<b>U.S.</b>	1.69	1.64	1.58	1.55	1.53	1.51	1.51	1.48	1.44	1.46	1.42	1.36	1.26	1.15	1.11	1.10	1.14	1.10	1.08	1.12
<b>Utah</b>	1.65	1.79	1.65	1.65	1.66	1.24	1.34	1.29	1.20	1.12	1.10	1.11	1.07	0.93	0.95	0.92	0.81	0.81	0.93	0.95



- In 2015, the Utah death rate per 100 million vehicle miles traveled was 0.95 which was lower than the U.S. rate of 1.12.
- The Utah death rate per 100 million vehicle miles traveled has been lower than the U.S. rate since 2001. This somewhat dispels the notion that drivers in Utah are worse than other drivers in the U.S.

U.S. SOURCE: National Highway Traffic Safety Administration

## Crashes

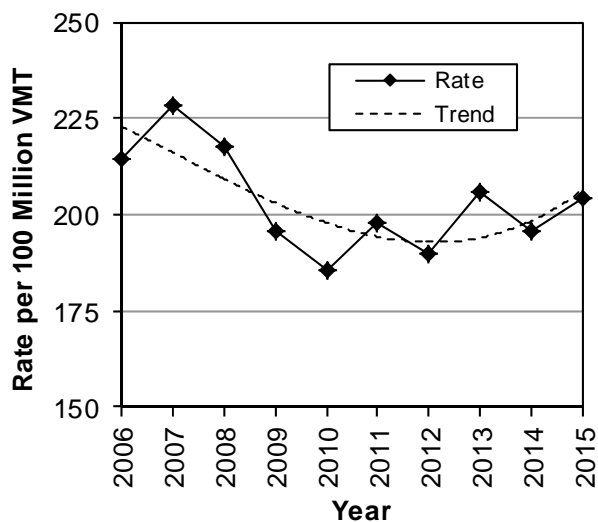
### Crashes (Utah 2006-2015)

Crashes								
Year	Property Damage Only		Injury		Fatal		Total	
	#	Rate per 100 Million VMT	#	Rate per 100 Million VMT	#	Rate per 100 Million VMT	#	Rate per 100 Million VMT
2006	37,674	144.0	18,264	69.8	249	0.95	56,187	214.7
2007	42,368	157.9	18,619	69.4	258	0.96	61,245	228.3
2008	38,997	150.7	17,125	66.2	245	0.95	56,367	217.8
2009	35,398	135.0	15,752	60.1	217	0.83	51,367	195.9
2010	34,155	128.3	14,995	56.3	218	0.82	49,368	185.5
2011	36,418	138.1	15,645	59.3	224	0.85	52,287	198.2
2012	34,635	130.0	15,765	59.2	200	0.75	50,600	190.0
2013	39,301	145.5	16,134	59.7	202	0.75	55,637	206.0
2014	37,388	135.6	16,426	59.6	222	0.81	54,036	196.0
2015	42,089	143.2	17,665	60.1	258	0.88	60,012	204.2
<b>Total</b>	<b>378,423</b>	<b>140.8</b>	<b>166,390</b>	<b>61.9</b>	<b>2,293</b>	<b>0.85</b>	<b>547,106</b>	<b>203.6</b>

NOTE: A crash may result in multiple injuries and/or deaths. See next page for persons.

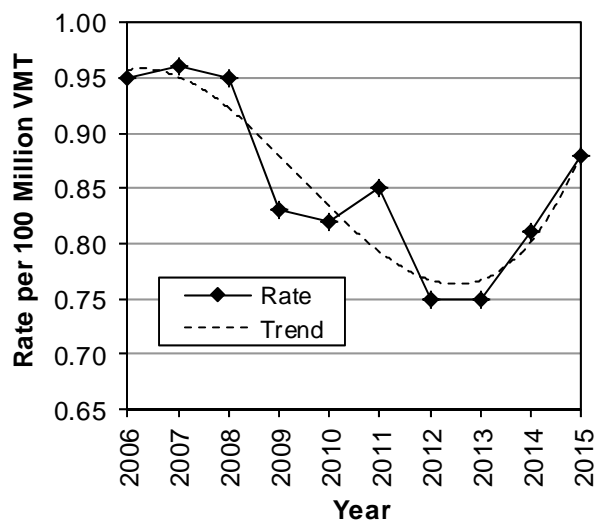
- During the last 10 years, 547,106 motor vehicle crashes occurred in Utah. On average, there are 54,700 crashes a year of which 16,600 involve injuries and 229 involve deaths.
- In 2015, total crashes increased 11.1% from 2014.
- The highest total crash rate per 100 million VMT in Utah occurred in 2007 while the lowest year was 2010.

### Crash Rates Per 100 Million Vehicle Miles Traveled (Utah 2006-2015)



- The 2010 total crash rate was the lowest on record (see Appendix for records back to 1947).
- There was a 4.9% decrease in the total crash rate from 2006-2015.

### Fatal Crash Rates Per 100 Million Vehicle Miles Traveled (Utah 2006-2015)



- The 2012 and 2013 fatal crash rates were the lowest on record.
- There was a 7.4% decrease in the fatal crash rate from 2006-2015.

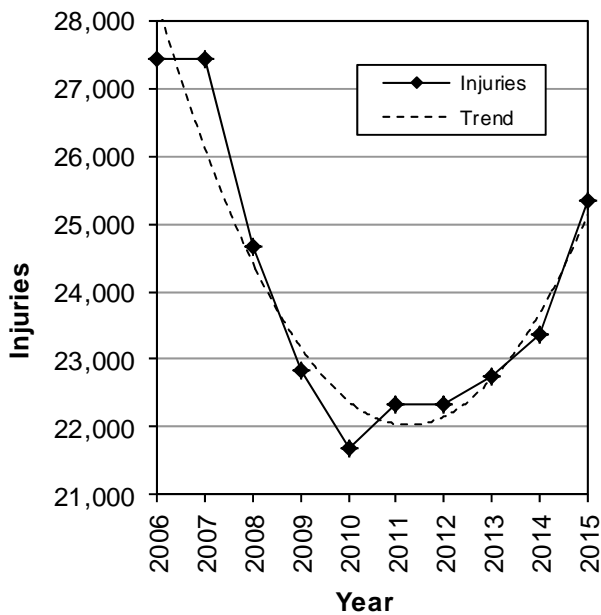
# Persons

## Persons Involved (Utah 2006-2015)

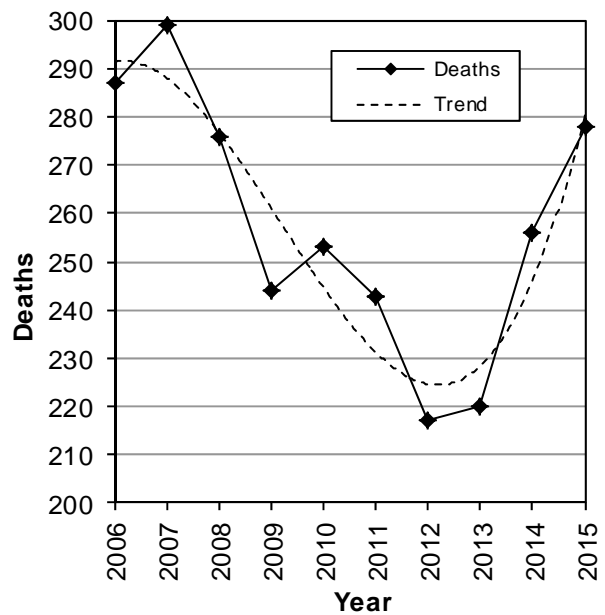
Persons								
Year	Non-Injured		Injured		Killed		Total	
	#	Rate per 100 Million VMT	#	Rate per 100 Million VMT	#	Rate per 100 Million VMT	#	Rate per 100 Million VMT
2006	116,187	444.0	27,433	104.8	287	1.10	143,907	550.0
2007	127,330	474.7	27,420	102.2	299	1.11	155,049	578.0
2008	113,744	439.4	24,673	95.3	276	1.07	138,693	535.8
2009	103,956	396.5	22,847	87.1	244	0.93	127,047	484.6
2010	101,966	383.1	21,675	81.4	253	0.95	123,894	465.5
2011	106,526	403.8	22,325	84.6	243	0.92	129,094	489.4
2012	103,156	387.3	22,336	83.9	217	0.81	125,709	471.9
2013	112,004	414.6	22,740	84.2	220	0.81	134,964	499.6
2014	110,562	401.0	23,364	84.7	256	0.93	134,182	486.6
2015	125,609	427.3	25,350	86.2	278	0.95	151,237	514.5
<b>Total</b>	<b>1,121,040</b>	<b>417.2</b>	<b>240,163</b>	<b>89.4</b>	<b>2,573</b>	<b>0.96</b>	<b>1,363,776</b>	<b>507.5</b>

- During the last 10 years, nearly 1.4 million people have been in a crash. On average over the past 10 years, approximately 24,000 people are injured and 257 people are killed in motor vehicle crashes a year.
- The injury rate per vehicle miles traveled decreased 17.7% from 2006-2015.
- The death rate per vehicle miles traveled in 2012 and 2013 was the lowest in Utah on record.
- 22 more people were killed in a crash in Utah in 2015; a 8.6% increase from 2014.

### Injured Persons by Year (Utah 2006-2015)



### Deaths by Year (Utah 2006-2015)



- The number of people injured in a crash increased for the 5th straight year.
- Deaths in 2015 were the highest total in Utah since 2007.

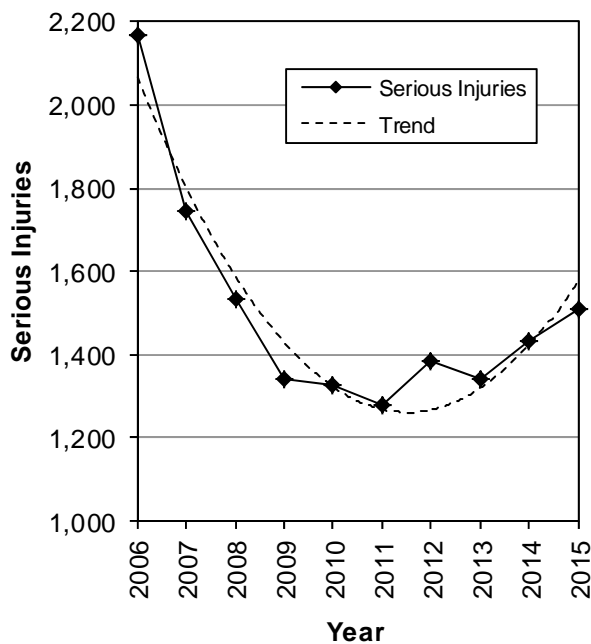
# Serious Injuries

## Serious Injuries (Utah 2006-2015)

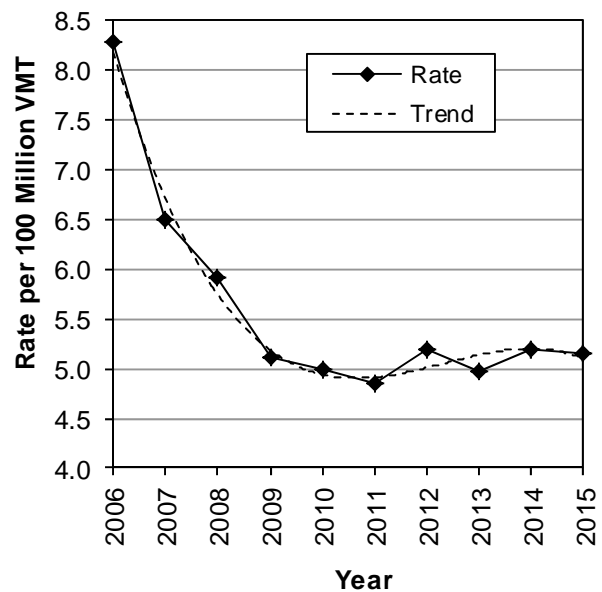
Persons						
Year	Serious Injuries		Deaths		Total	
	#	Rate per 100 Million VMT	#	Rate per 100 Million VMT	#	Rate per 100 Million VMT
2006	2,166	8.28	287	1.10	2,453	9.37
2007	1,743	6.50	299	1.11	2,042	7.61
2008	1,533	5.92	276	1.07	1,809	6.99
2009	1,340	5.11	244	0.93	1,584	6.04
2010	1,329	4.99	253	0.95	1,582	5.94
2011	1,278	4.84	243	0.92	1,521	5.77
2012	1,386	5.20	217	0.81	1,603	6.02
2013	1,343	4.97	220	0.81	1,563	5.79
2014	1,431	5.19	256	0.93	1,687	6.12
2015	1,512	5.14	278	0.95	1,790	6.09
<b>Total</b>	<b>15,061</b>	<b>5.60</b>	<b>2,573</b>	<b>0.96</b>	<b>17,634</b>	<b>6.56</b>

- During the last 10 years, 15,061 people have suffered a serious injury in a motor vehicle crash. On average over the past 10 years, approximately 1,500 people are seriously injured and 257 people are killed in motor vehicle crashes a year.
- The serious injury rate per vehicle miles traveled decreased 38% from 2006-2015.
- 2006 had the highest serious injury rate per vehicle miles traveled while 2011 had the lowest.

### Serious Injuries by Year (Utah 2006-2015)



### Serious Injury Rates Per 100 Million Vehicle Miles Traveled (Utah 2006-2015)

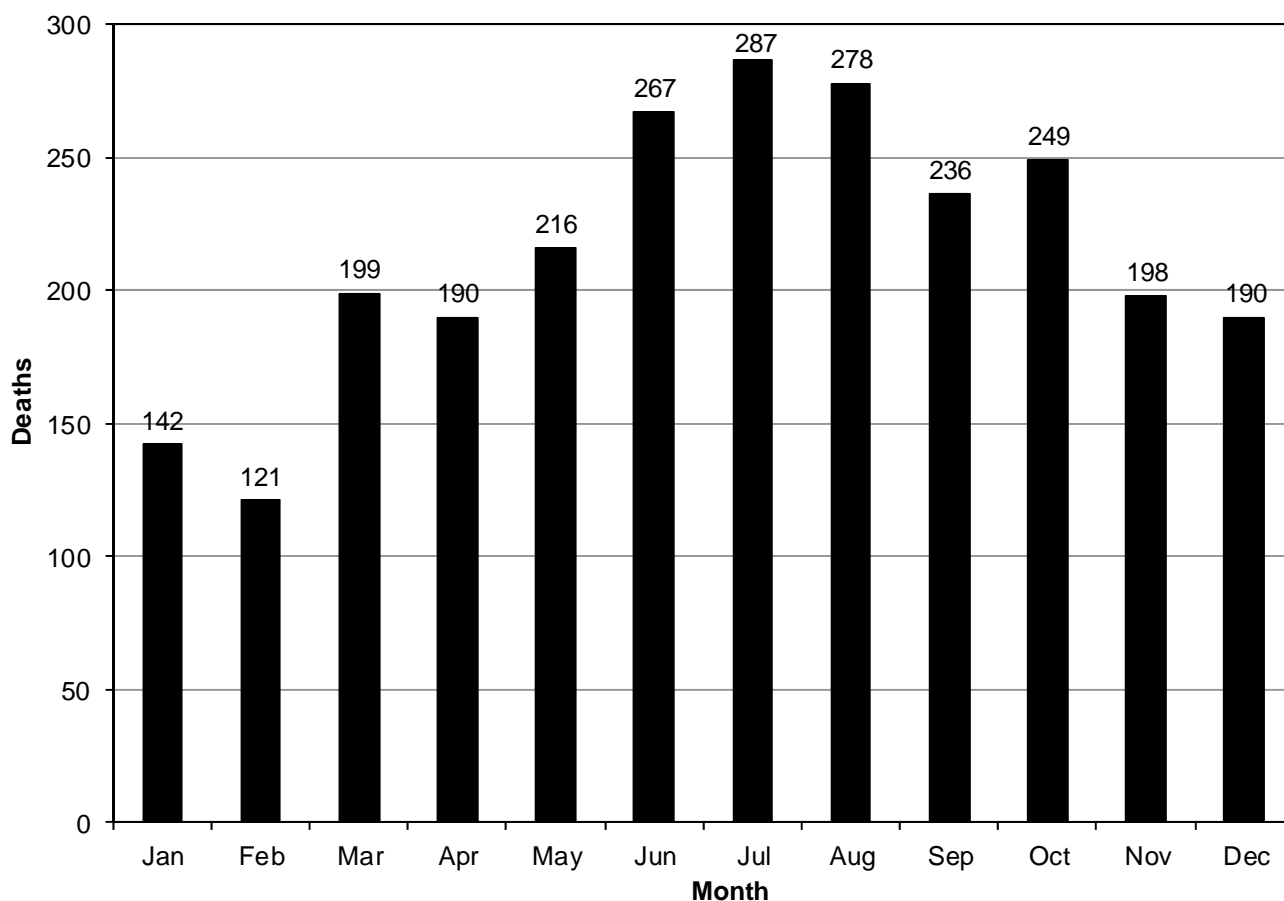


- The number of people seriously injured in a crash increased for the 2nd straight year.
- The serious injury rate per mile traveled has been fairly level the past seven years.

## Deaths

### Deaths by Month (Utah 2006-2015)

Month	Year										Total	
	2006	2007	2008	2009	2010	2011	2012	2013	2014	2015	#	%
January	22	16	23	15	8	16	7	4	17	14	<b>142</b>	<b>5.5%</b>
February	15	13	9	17	9	9	15	13	6	15	<b>121</b>	<b>4.7%</b>
March	23	24	12	27	20	21	20	13	15	24	<b>199</b>	<b>7.7%</b>
April	17	35	12	24	22	14	14	19	17	16	<b>190</b>	<b>7.4%</b>
May	14	24	31	21	23	12	23	15	24	29	<b>216</b>	<b>8.4%</b>
June	26	31	30	20	24	28	16	23	38	31	<b>267</b>	<b>10.4%</b>
July	29	35	29	25	28	22	25	30	34	30	<b>287</b>	<b>11.2%</b>
August	33	26	32	32	24	30	22	27	18	34	<b>278</b>	<b>10.8%</b>
September	31	30	23	19	24	30	17	19	26	17	<b>236</b>	<b>9.2%</b>
October	33	26	28	18	28	21	20	22	29	24	<b>249</b>	<b>9.7%</b>
November	23	21	25	13	18	17	23	23	15	20	<b>198</b>	<b>7.7%</b>
December	21	18	22	13	25	23	15	12	17	24	<b>190</b>	<b>7.4%</b>
<b>Total</b>	<b>287</b>	<b>299</b>	<b>276</b>	<b>244</b>	<b>253</b>	<b>243</b>	<b>217</b>	<b>220</b>	<b>256</b>	<b>278</b>	<b>2,573</b>	<b>100.0%</b>

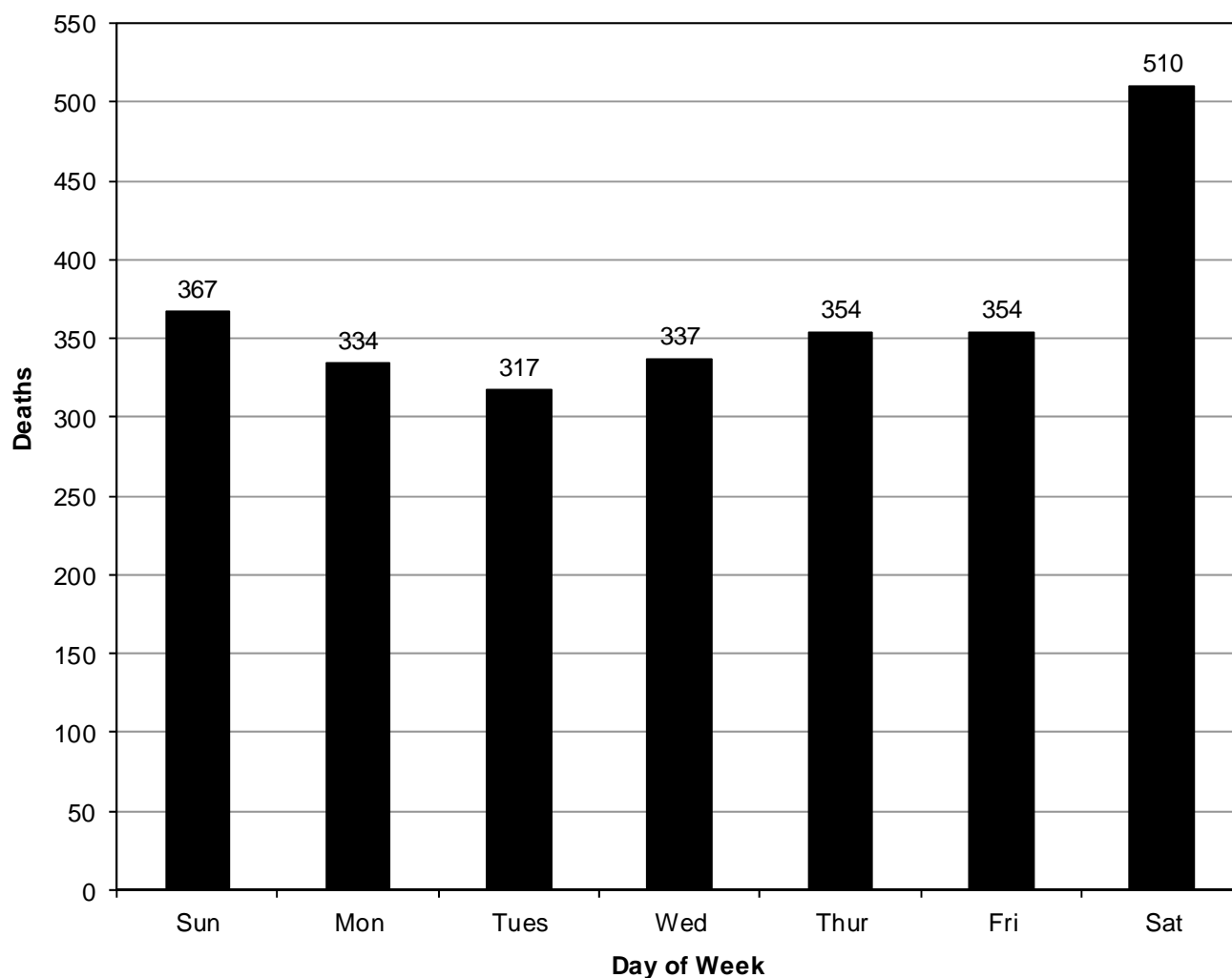


- In the last 10 years, July (287) and August (278) had the highest total number of motor vehicle crash deaths while February (121) and January (142) had the fewest.
- In the last 10 years, June 2014 had the highest number of deaths (38) while January 2013 had the fewest (4).
- In 2015, August (34) and June (31) had the highest number of deaths while January (14) had the fewest.

## Deaths

### Deaths by Day of Week (Utah 2006-2015)

Day of Week	Deaths										Total	
	Year										#	%
	2006	2007	2008	2009	2010	2011	2012	2013	2014	2015		
Sunday	34	55	47	35	30	27	41	29	29	40	<b>367</b>	<b>14.3%</b>
Monday	41	39	30	33	36	25	30	37	37	26	<b>334</b>	<b>13.0%</b>
Tuesday	32	39	43	39	31	32	24	20	24	33	<b>317</b>	<b>12.3%</b>
Wednesday	34	39	31	40	23	32	34	24	35	45	<b>337</b>	<b>13.1%</b>
Thursday	40	37	31	27	50	33	21	38	34	43	<b>354</b>	<b>13.8%</b>
Friday	33	30	42	32	26	40	29	36	40	46	<b>354</b>	<b>13.8%</b>
Saturday	73	60	52	38	57	54	38	36	57	45	<b>510</b>	<b>19.8%</b>
<b>Total</b>	<b>287</b>	<b>299</b>	<b>276</b>	<b>244</b>	<b>253</b>	<b>243</b>	<b>217</b>	<b>220</b>	<b>256</b>	<b>278</b>	<b>2,573</b>	<b>100.0%</b>

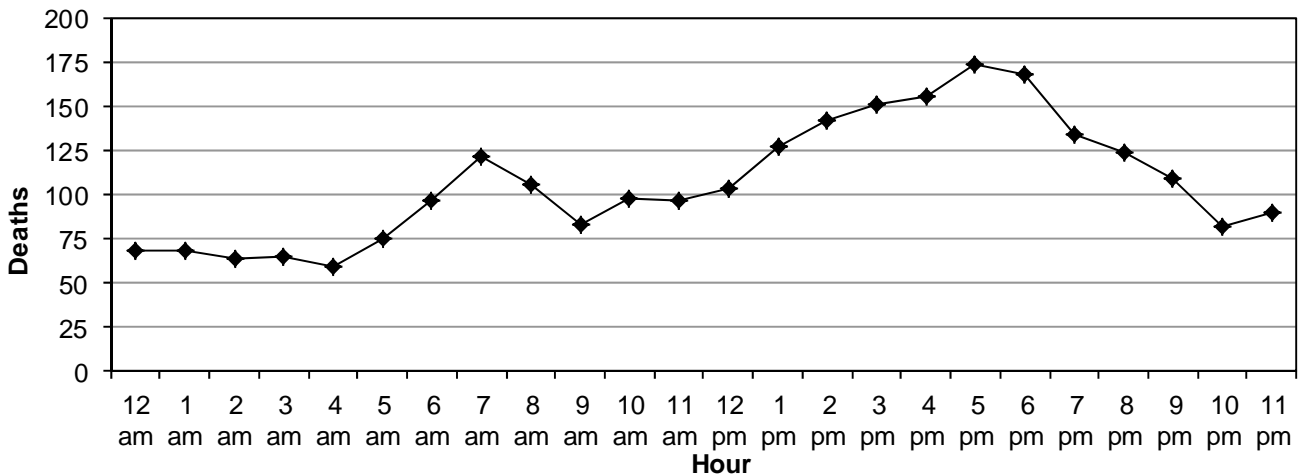


- In the last 10 years, Saturday (510) had the highest total number of motor vehicle crash deaths while Tuesday (317) had the fewest.
- In the last 10 years, Saturdays in 2006 had the highest number of deaths (73) while Tuesdays in 2013 had the fewest (20).
- In 2015, Friday (46) had the highest number of deaths while Monday (26) had the fewest.

# Deaths

## Deaths by Hour (Utah 2006-2015)

Deaths												
Hour	Year										Total	
	2006	2007	2008	2009	2010	2011	2012	2013	2014	2015	#	%
Midnight	5	12	5	16	5	4	6	5	3	8	69	2.7%
1 a.m.	11	9	12	5	4	6	5	4	8	5	69	2.7%
2 a.m.	9	11	7	4	8	7	7	3	3	5	64	2.5%
3 a.m.	6	18	3	3	5	10	6	1	6	7	65	2.5%
4 a.m.	7	3	5	12	3	5	3	5	10	6	59	2.3%
5 a.m.	6	9	8	5	8	10	5	8	4	12	75	2.9%
6 a.m.	13	9	10	8	11	6	7	7	16	10	97	3.8%
7 a.m.	13	12	20	13	17	8	8	9	7	15	122	4.8%
8 a.m.	20	15	8	7	11	7	5	10	15	8	106	4.1%
9 a.m.	14	7	11	6	11	9	3	8	5	9	83	3.2%
10 a.m.	8	7	8	13	9	13	10	9	8	13	98	3.8%
11 a.m.	9	10	16	14	12	6	6	7	9	8	97	3.8%
Noon	8	12	14	7	13	10	8	14	12	6	104	4.1%
1 p.m.	10	15	8	13	14	17	8	19	19	5	128	5.0%
2 p.m.	12	15	9	7	20	14	19	9	14	23	142	5.5%
3 p.m.	18	21	13	22	13	12	10	14	15	13	151	5.9%
4 p.m.	18	14	14	13	12	13	24	14	15	19	156	6.1%
5 p.m.	21	24	18	19	12	13	20	15	15	17	174	6.8%
6 p.m.	18	15	19	10	16	20	11	12	18	29	168	6.5%
7 p.m.	18	16	21	11	15	12	8	12	10	11	134	5.2%
8 p.m.	6	14	16	14	10	14	15	14	10	11	124	4.8%
9 p.m.	13	5	20	13	9	11	6	9	9	14	109	4.2%
10 p.m.	13	10	4	7	4	7	11	5	12	9	82	3.2%
11 p.m.	10	15	6	1	10	9	6	7	11	15	90	3.5%
<b>Total</b>	<b>286</b>	<b>298</b>	<b>275</b>	<b>243</b>	<b>252</b>	<b>243</b>	<b>217</b>	<b>220</b>	<b>254</b>	<b>278</b>	<b>2,566</b>	<b>100.0%</b>



- In the last 10 years, 5 p.m. (174) and 6 p.m. (168) had the highest total number of motor vehicle crash deaths while 4 a.m. (59) and 2 a.m. (64) had the fewest.
- In the last 10 years, 3 p.m. in 2005 had the highest number of deaths (33) while 11 p.m. in 2009 and 3 a.m. in 2013 had the fewest (1).
- In 2015, 6 p.m. (29) had the highest number of deaths while 1 a.m., 2 a.m., and 1 p.m. (5) had the fewest.



## Overview

### Deaths by Hour and Day of Week (Utah 2006-2015)

Deaths, 2006-2015								
Hour	Day of Week							Total #
	Sun	Mon	Tue	Wed	Thu	Fri	Sat	
Midnight	13	6	1	10	14	9	16	69
1 a.m.	20	3	5	7	2	12	20	69
2 a.m.	20	3	6	7	6	4	18	64
3 a.m.	13	17	4	3	6	9	13	65
4 a.m.	14	6	6	4	5	8	16	59
5 a.m.	12	9	8	7	6	16	17	75
6 a.m.	9	9	16	21	14	16	12	97
7 a.m.	15	18	19	17	21	17	15	122
8 a.m.	12	17	18	17	17	6	19	106
9 a.m.	6	20	15	5	9	10	18	83
10 a.m.	15	10	10	13	11	23	16	98
11 a.m.	9	15	9	12	10	16	26	97
Noon	12	10	13	25	15	13	16	104
1 p.m.	14	23	14	17	23	14	23	128
2 p.m.	31	11	16	22	23	9	30	142
3 p.m.	21	24	22	14	23	18	29	151
4 p.m.	21	25	17	17	22	22	32	156
5 p.m.	31	28	22	21	21	21	30	174
6 p.m.	9	23	26	21	23	29	37	168
7 p.m.	27	14	18	24	25	12	14	134
8 p.m.	19	13	21	13	10	26	22	124
9 p.m.	8	12	10	15	22	18	24	109
10 p.m.	5	9	8	14	12	11	23	82
11 p.m.	11	8	13	11	11	15	21	90
<b>Total</b>	<b>367</b>	<b>333</b>	<b>317</b>	<b>337</b>	<b>351</b>	<b>354</b>	<b>507</b>	<b>2,566</b>

High = 21+

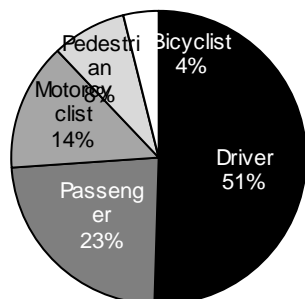
Medium = 11-20

Low = 0-10

- In the last 10 years, everyday 2 p.m. to 6:59 p.m. and Saturday from 8 p.m. to 11:59 p.m. had high numbers of motor vehicle crash deaths.
- In the last 10 years, weekdays 12 a.m. to 5:59 a.m. had low number of motor vehicle crash deaths.

### Serious Injuries by Person Type (Utah 2006-2015)

Person Type	Year										Total	
	2006	2007	2008	2009	2010	2011	2012	2013	2014	2015	#	%
Driver	1,169	890	749	670	622	626	676	696	695	808	7,601	50.5%
Passenger	597	454	371	325	320	261	307	244	317	335	3,531	23.4%
Motorcyclist	225	214	229	195	203	197	196	224	230	203	2,116	14.0%
Pedestrian	119	132	137	103	123	127	122	115	134	118	1,230	8.2%
Bicyclist	56	53	47	47	61	67	85	64	55	48	583	3.9%
<b>Total</b>	<b>2,166</b>	<b>1,743</b>	<b>1,533</b>	<b>1,340</b>	<b>1,329</b>	<b>1,278</b>	<b>1,386</b>	<b>1,343</b>	<b>1,431</b>	<b>1,512</b>	<b>15,061</b>	<b>100.0%</b>

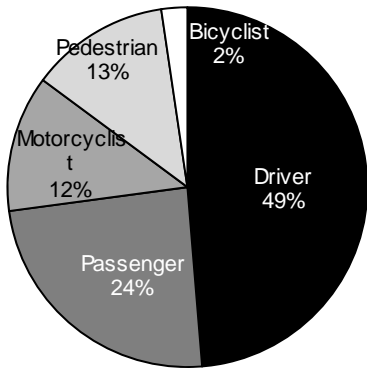


- During the last 10 years, 15,061 people had a serious injury in a crash; 50.5% were drivers, 23.4% were passengers, 14.0% were motorcyclists, 8.2% were pedestrians, and 3.9% were bicyclists.

# Deaths

## Traffic Deaths by Person Type (Utah 2006-2015)

Person Type	Year										Total	
	2006	2007	2008	2009	2010	2011	2012	2013	2014	2015	#	%
Driver	147	139	133	119	129	123	106	106	115	136	1,253	48.7%
Passenger	77	89	69	70	68	55	45	47	50	52	622	24.2%
Pedestrian	29	32	34	20	28	32	31	30	37	49	322	12.5%
Motorcyclist	24	33	36	30	21	28	32	31	45	36	316	12.3%
Bicyclist	10	6	4	5	7	5	3	6	9	5	60	2.3%
<b>Total</b>	<b>287</b>	<b>299</b>	<b>276</b>	<b>244</b>	<b>253</b>	<b>243</b>	<b>217</b>	<b>220</b>	<b>256</b>	<b>278</b>	<b>2,573</b>	<b>100.0%</b>



- During the last 10 years, 2,573 people died in a crash; 48.7% were drivers, 24.2% were passengers, 12.5% were pedestrians, 12.3% were motorcyclists, and 2.3% were bicyclists.
- The number of pedestrians killed in 2015 was the highest amount in the last 10 years.
- The number of drivers killed in 2015 was the highest amount since 2007.
- The number of motorcyclists killed in 2014 was the highest amount in the last 10 years.

## Traffic Deaths by Selected Contributing Factors (Utah 2006-2015)

Crash Factor	Year										Total	
	2006	2007	2008	2009	2010	2011	2012	2013	2014	2015	#	%
Speed	113	134	126	123	118	101	92	87	110	104	1,108	44.1%
Unrestrained Occupant	88	82	78	91	86	82	79	59	72	87	804	32.0%
Drunk Driver	39	42	34	31	25	39	20	23	45	37	335	13.3%
Failed to Yield	30	32	38	34	34	27	27	23	30	31	306	12.2%
Distraction	20	28	18	21	19	21	20	17	22	28	214	8.5%
Drowsy Driver	10	46	29	23	13	7	14	14	6	15	177	7.0%
Red Light/Stop Sign Running	5	15	19	26	18	18	14	16	18	19	168	6.7%
Followed Too Close	0	4	9	12	7	14	11	9	9	10	85	3.4%
<b>Total Deaths</b>	<b>287</b>	<b>299</b>	<b>276</b>	<b>244</b>	<b>253</b>	<b>243</b>	<b>217</b>	<b>220</b>	<b>220</b>	<b>256</b>	<b>2,515</b>	



- During the last 10 years, speed was the leading contributing factor accounting for 44.1% of deaths.
- Nearly one-third of the deaths were to unrestrained occupants. It is estimated that if everyone who died was restrained then 402 of these lives would have been saved.
- In 2015, deaths involving distracted drivers were the highest (tied with 2007) in the last 10 years.

## Counties

### Traffic Deaths by County (Utah 2006-2015)

County	Deaths										Total		Rate per
	Year										#	%	Year per 100
	2006	2007	2008	2009	2010	2011	2012	2013	2014	2015			Million VMT
Kane	9	5	3	4	3	5	4	2	3	5	43	1.7%	2.81
San Juan	8	16	15	7	2	7	8	7	8	5	83	3.2%	2.57
Wayne	0	0	1	3	0	0	1	3	3	1	12	0.5%	2.29
Sanpete	6	7	5	4	7	1	1	9	3	4	47	1.8%	1.97
Garfield	1	3	2	3	3	3	3	2	4	0	24	0.9%	1.95
Piute	1	2	2	0	0	1	0	0	0	0	6	0.2%	1.94
Rich	2	0	1	2	2	0	1	0	2	0	10	0.4%	1.90
Duchesne	6	4	2	6	10	10	3	4	9	2	56	2.2%	1.71
Uintah	7	9	10	6	6	7	9	2	8	5	69	2.7%	1.58
Daggett	0	1	0	0	1	0	2	0	0	1	5	0.2%	1.51
Tooele	15	10	15	11	12	10	17	8	15	14	127	4.9%	1.47
Sevier	7	7	7	5	5	5	2	8	2	3	51	2.0%	1.46
Millard	7	15	7	5	7	3	10	7	4	9	74	2.9%	1.39
Emery	5	7	8	6	5	5	2	6	2	6	52	2.0%	1.35
Wasatch	7	11	1	4	1	5	6	3	5	10	53	2.1%	1.35
Grand	8	5	4	8	7	1	2	3	7	6	51	2.0%	1.34
Carbon	4	5	2	3	2	9	2	4	4	8	43	1.7%	1.25
Weber	14	25	15	23	21	21	13	18	16	21	187	7.3%	1.07
Box Elder	10	17	9	9	12	9	4	5	13	16	104	4.0%	1.07
Morgan	0	0	2	2	0	4	1	0	4	2	15	0.6%	1.05
Washington	22	22	18	10	17	9	11	14	18	17	158	6.1%	1.01
Juab	2	8	5	8	7	5	1	3	2	0	41	1.6%	0.98
Beaver	2	3	2	6	1	1	1	4	2	5	27	1.0%	0.95
Summit	8	6	12	10	5	9	8	4	6	7	75	2.9%	0.92
Cache	14	6	5	10	6	4	6	10	12	4	77	3.0%	0.81
Iron	9	8	3	12	8	10	0	8	3	2	63	2.4%	0.79
Salt Lake	69	54	64	46	61	66	64	53	66	75	618	24.0%	0.65
Utah	30	24	42	21	32	19	20	21	24	39	272	10.6%	0.62
Davis	14	19	14	10	10	14	15	12	11	11	130	5.1%	0.46
<b>Total</b>	<b>287</b>	<b>299</b>	<b>276</b>	<b>244</b>	<b>253</b>	<b>243</b>	<b>217</b>	<b>220</b>	<b>256</b>	<b>278</b>	<b>2,573</b>	<b>100.0%</b>	<b>0.88</b>

- During the last 10 years, nearly one-fourth (24.0%) of the traffic deaths occurred in Salt Lake County.
- Salt Lake, Utah, Weber, Washington, Davis, Tooele, and Box Elder Counties all had over 100 deaths over the last 10 years.
- Urban Counties accounted for 56.0% of the deaths.
- Over the last 10 years, Salt Lake County in 2015 had the highest number of deaths (75).
- Daggett, Garfield, Iron, Juab, Morgan, Piute, Rich, and Wayne Counties had at least one year with no deaths.
- In 2015, only Salt Lake County had its highest total of deaths during the last 10 years.
- In 2015, Cache, Duchesne, Garfield, Juab, Piute, and Rich Counties had their lowest total of deaths during the last 10 years.
- Kane, San Juan, and Wayne Counties had the highest death rate per vehicle mile traveled over the last 10 years.
- Davis, Utah, and Salt Lake Counties had the lowest death rate per vehicle mile traveled over the last 10 years.

## Counties

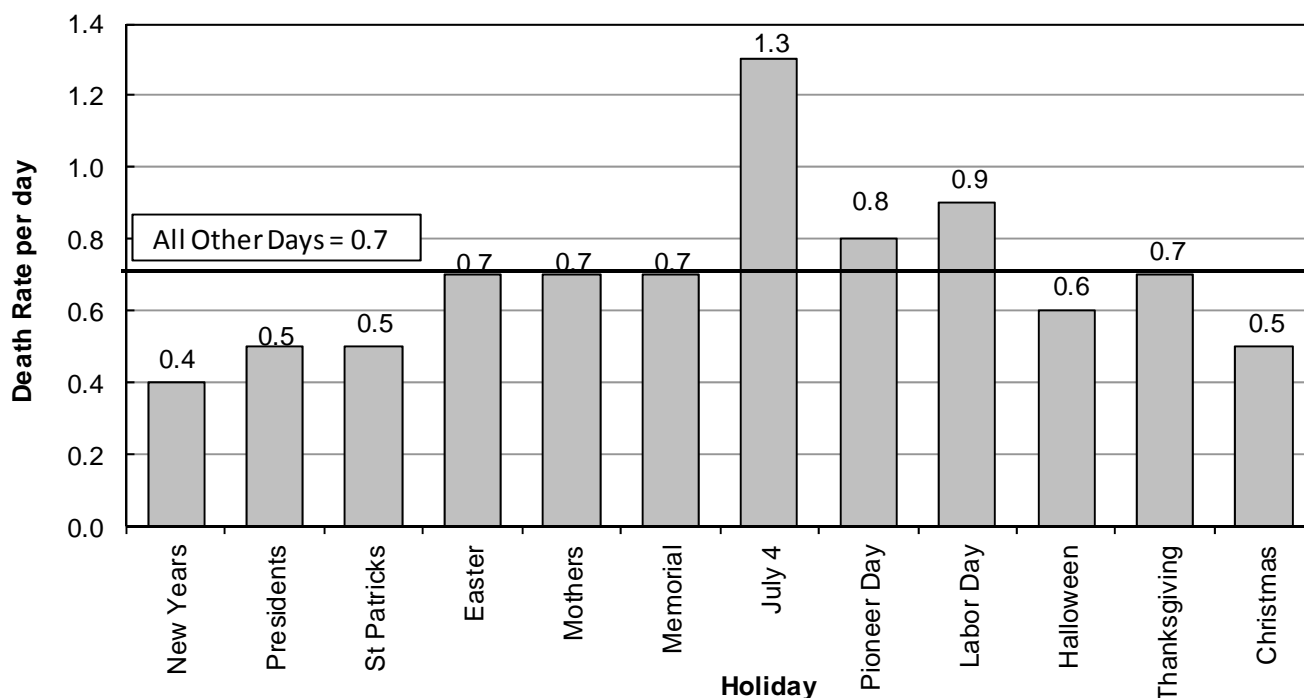
### Crashes by County (Utah 2006-2015)

County	Crashes										Total		Rate per Year per 100 Million VMT
	Year										#	%	
	2006	2007	2008	2009	2010	2011	2012	2013	2014	2015			
Salt Lake	23,812	26,883	24,803	22,630	21,506	21,730	21,953	25,683	24,833	27,152	240,985	44.0%	254.6
Weber	4,924	4,870	4,333	4,082	3,872	3,849	3,910	4,181	4,037	4,314	42,372	7.7%	242.9
Cache	1,912	2,219	2,018	1,890	1,987	1,959	1,688	1,933	1,808	2,084	19,498	3.6%	204.2
Utah	7,865	9,530	8,431	7,558	7,589	9,495	7,789	7,625	7,444	8,805	82,131	15.0%	186.5
Davis	5,500	5,410	4,854	4,286	3,958	4,301	4,251	5,088	4,689	5,322	47,659	8.7%	170.1
Wasatch	660	724	637	524	554	585	592	570	584	760	6,190	1.1%	157.2
Uintah	714	861	816	681	542	564	673	676	581	564	6,672	1.2%	152.9
Rich	71	84	95	83	79	79	79	70	62	65	767	0.1%	145.6
Duchesne	424	501	564	343	446	584	520	476	463	439	4,760	0.9%	145.2
Kane	218	220	240	216	201	206	196	181	195	227	2,100	0.4%	137.0
Summit	1,158	1,084	1,165	1,031	986	1,041	1,076	1,146	1,258	1,182	11,127	2.0%	136.3
Washington	2,625	2,435	2,104	1,871	1,656	1,768	1,936	2,071	2,210	2,575	21,251	3.9%	135.7
Garfield	147	204	189	143	178	147	161	134	148	190	1,641	0.3%	133.1
Sanpete	376	393	300	244	228	308	302	296	318	364	3,129	0.6%	131.3
Carbon	480	458	494	505	414	566	406	346	384	397	4,450	0.8%	129.0
Sevier	515	536	483	548	430	420	386	337	333	397	4,385	0.8%	125.3
Wayne	62	58	104	77	56	46	54	52	67	76	652	0.1%	124.6
Morgan	149	171	214	129	173	154	147	194	174	173	1,678	0.3%	117.5
Daggett	51	50	55	36	27	22	34	35	33	35	378	0.1%	114.1
Iron	995	901	819	829	886	722	791	821	843	956	8,563	1.6%	107.7
Tooele	903	869	802	796	730	1,016	972	1,052	1,003	1,116	9,259	1.7%	107.2
Box Elder	810	918	1,066	1,117	1,040	1,056	1,006	1,035	1,017	1,043	10,108	1.8%	103.8
Piute	45	39	24	30	34	29	24	21	40	30	316	0.1%	101.9
Beaver	217	212	240	309	274	258	255	250	223	221	2,459	0.4%	86.1
San Juan	242	331	303	262	254	233	266	273	259	256	2,679	0.5%	82.8
Juab	369	368	337	393	352	341	274	273	256	307	3,270	0.6%	78.1
Millard	427	431	401	353	407	318	372	362	334	388	3,793	0.7%	71.1
Emery	305	257	251	216	281	256	246	245	220	289	2,566	0.5%	66.6
Grand	211	228	225	185	228	234	241	211	220	285	2,268	0.4%	59.5
<b>Total</b>	<b>56,187</b>	<b>61,245</b>	<b>56,367</b>	<b>51,367</b>	<b>49,368</b>	<b>52,287</b>	<b>50,600</b>	<b>55,637</b>	<b>54,036</b>	<b>60,012</b>	<b>547,106</b>	<b>100.0%</b>	<b>186.1</b>

- During the last 10 years, nearly one-half (44.0%) of the traffic crashes occurred in Salt Lake County.
- Salt Lake, Utah, Davis, Weber, and Washington Counties all had over 20,000 crashes over the last 10 years.
- Urban Counties accounted for 83.0% of the crashes.
- Over the last 10 years, Salt Lake County in 2015 had the highest number of crashes (27,152).
- In 2015, Grand, Salt Lake, Tooele, and Wasatch Counties had their highest total of crashes during the last 10 years.
- In 2015, no county had their lowest total of crashes during the last 10 years.
- Salt Lake, Weber, and Cache Counties had the highest crash rate per vehicle mile traveled over the last 10 years.
- Grand, Emery, and Millard Counties had the lowest crash rate per vehicle mile traveled over the last 10 years.

## Holidays

### Holiday Death Rate Per Day (Utah 2006-2015)



### Holiday Deaths

Year	New Years		Presidents		St Patricks		Easter		Mothers		Memorial Day		4th of July		Pioneer Day		Labor Day		Halloween		Thanksgiving		Christmas		Total	
	#	Rate per Day	#	Rate per Day	#	Rate per Day	#	Rate per Day	#	Rate per Day	#	Rate per Day	#	Rate per Day	#	Rate per Day	#	Rate per Day	#	Rate per Day	#	Rate per Day	#	Rate per Day	#	Rate per Day
2006	0	0.0	4	1.0	1	0.3	3	1.0	2	0.7	2	0.5	1	0.3	7	1.8	6	1.5	1	0.3	8	1.6	10	2.5	45	1.0
2007	0	0.0	1	0.3	3	1.0	2	0.7	1	0.3	2	0.5	3	1.0	4	1.3	6	1.5	5	1.7	6	1.2	1	0.3	34	0.9
2008	2	0.7	1	0.3	6	1.5	0	0.0	1	0.3	5	1.3	12	3.0	4	0.8	2	0.5	0	0.0	3	0.6	1	0.2	37	0.8
2009	1	0.2	3	0.8	2	0.7	4	1.3	2	0.7	4	1.0	1	0.3	1	0.3	2	0.5	1	0.3	0	0.0	0	0.0	21	0.5
2010	2	0.5	0	0.0	1	0.3	2	0.7	5	1.7	3	0.8	4	1.3	2	0.7	3	0.8	0	0.0	6	1.2	0	0.0	28	0.7
2011	3	1.0	0	0.0	0	0.0	1	0.3	0	0.0	1	0.3	3	0.8	1	0.3	3	0.8	5	1.3	0	0.0	1	0.3	18	0.4
2012	0	0.0	3	0.8	0	0.0	0	0.0	6	2.0	0	0.0	0	0.0	2	0.7	3	0.8	1	0.3	5	1.0	2	0.7	22	0.5
2013	0	0.0	3	0.8	0	0.0	5	1.7	2	0.7	5	1.3	10	2.0	1	0.3	3	0.8	0	0.0	4	0.8	0	0.0	33	0.8
2014	5	1.7	4	1.0	3	0.8	1	0.3	2	0.7	2	0.5	10	2.5	7	1.4	3	0.8	4	1.0	3	0.6	1	0.2	45	0.9
2015	1	0.2	1	0.3	2	0.7	2	0.7	1	0.3	3	0.8	1	0.3	1	0.3	4	1.0	3	1.0	2	0.4	1	0.3	22	0.5
<b>Total</b>	<b>14</b>	<b>0.4</b>	<b>20</b>	<b>0.5</b>	<b>18</b>	<b>0.5</b>	<b>20</b>	<b>0.7</b>	<b>22</b>	<b>0.7</b>	<b>27</b>	<b>0.7</b>	<b>45</b>	<b>1.3</b>	<b>30</b>	<b>0.8</b>	<b>35</b>	<b>0.9</b>	<b>20</b>	<b>0.6</b>	<b>37</b>	<b>0.7</b>	<b>17</b>	<b>0.5</b>	<b>305</b>	<b>0.7</b>

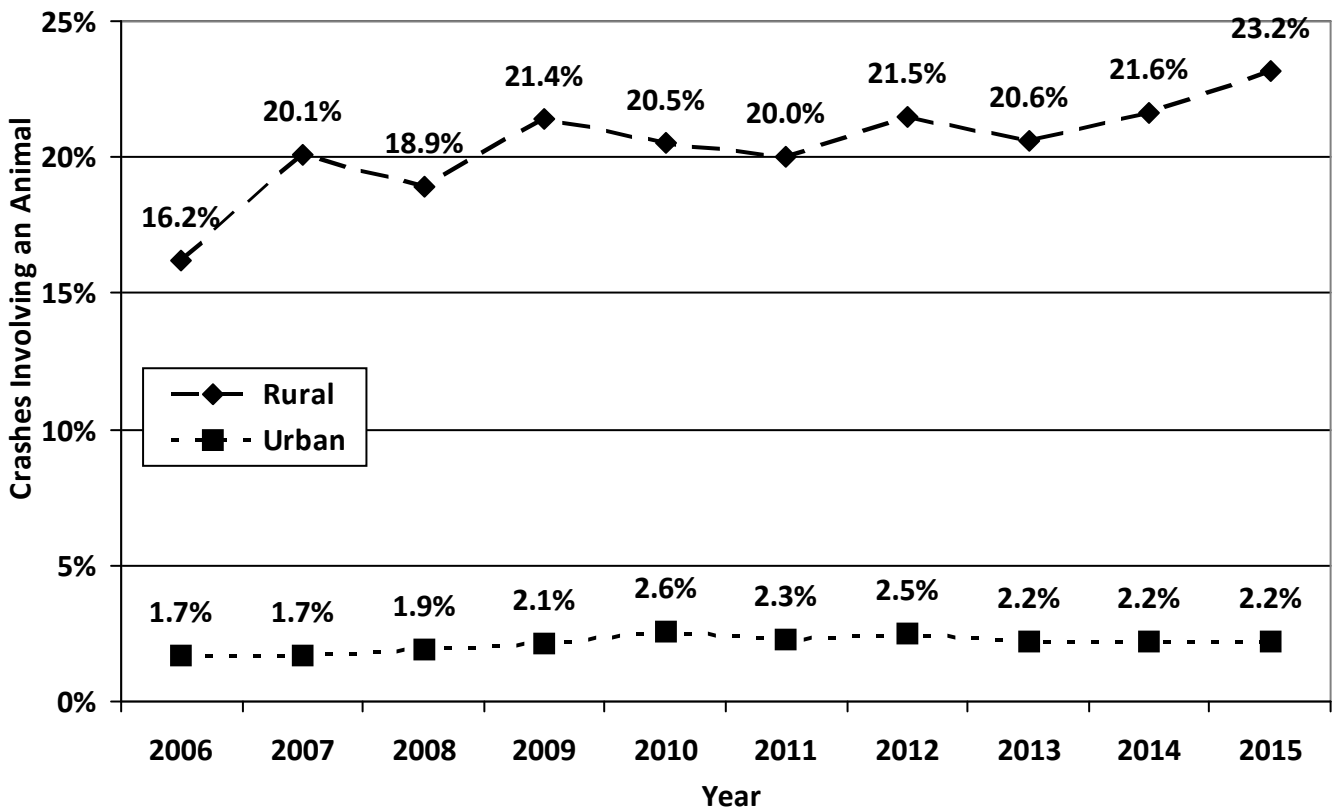
- Holiday deaths are a concern due to risk factors such as fatigue, impaired driving, long distance traveling, speeding, and traveling on unfamiliar roadways.
- Over the past 10 years, the 4th of July Holiday (1.3) had the highest rate of deaths while the New Years Holiday (0.4) Holiday had the lowest rates.
- In 2015, the Labor Day and Halloween Holidays had the highest death rate per day (1.0) while the New Years Holiday had the lowest rate (0.2).
- 4th of July 2008 (3.0), 4th of July 2014 (2.5), Christmas 2006 (2.5), Mother's Day 2012 (2.0), and 4th of July 2013 (2.0) had the highest death rates per day.

Note: Because of the differing lengths of holiday periods, the rate per day is provided and should be used for comparisons.

## Animal-Related Crashes

### Animal-Related Crashes by Rural and Urban (Utah 2006-2015)

Animal-Related Crashes									
Year	Rural			Urban			Total		
	All	Animal	%	All	Animal	%	All	Animal	%
	#	#	%	#	#	%	#	#	%
2006	9,549	1,544	16.2%	46,638	771	1.7%	56,187	2,315	4.1%
2007	9,898	1,994	20.1%	51,347	897	1.7%	61,245	2,891	4.7%
2008	9,824	1,856	18.9%	46,543	884	1.9%	56,367	2,740	4.9%
2009	9,050	1,933	21.4%	42,317	879	2.1%	51,367	2,812	5.5%
2010	8,800	1,805	20.5%	40,568	1,059	2.6%	49,368	2,864	5.8%
2011	9,185	1,838	20.0%	43,102	991	2.3%	52,287	2,829	5.4%
2012	9,073	1,952	21.5%	41,527	1,024	2.5%	50,600	2,976	5.9%
2013	9,056	1,868	20.6%	46,581	1,042	2.2%	55,637	2,910	5.2%
2014	9,015	1,943	21.6%	45,021	988	2.2%	54,036	2,931	5.4%
2015	9,760	2,267	23.2%	50,252	1,114	2.2%	60,012	3,381	5.6%
<b>Total</b>	<b>93,210</b>	<b>19,000</b>	<b>20.4%</b>	<b>453,896</b>	<b>9,649</b>	<b>2.1%</b>	<b>547,106</b>	<b>28,649</b>	<b>5.2%</b>



- Over the last 10 years, animal-related crashes accounted for 5.2% of all crashes in Utah. While animal crashes accounted for a minimal amount of crashes in Urban areas (2.1%), animal crashes accounted for over one-fifth (20.4%) of the crashes in Rural areas.
- Crashes in Rural areas involving an animal have shown an increasing trend while Urban area animal crashes have remained level.
- While animal crashes comprised 5.6% of total crashes statewide in 2015, they accounted for nearly one-fourth (23.2%) of crashes in rural counties.