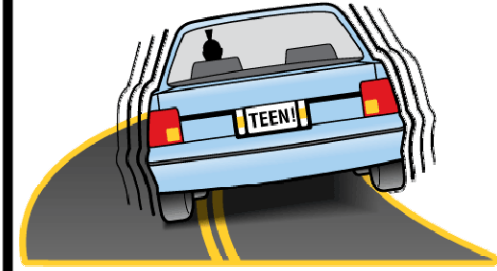


Teenage Drivers



2

Section 8: Teenage Drivers



Trends

Teenage Driver Crashes 2007-2016.....	2
Teenage Driver Fatal Crashes 2007-2016.....	3
Teenage Driver Crash Rates 2007-2016	3

Crash Conditions

County	4
Previous Driving Violations	4
Driver Age	5
Driver Gender	5
Month.....	6
Day of Week	6
Hour	7
Crashes by Day of Week and Hour.....	8
Travel Speed.....	8
Number of Occupants in Teen Driven Vehicles	9
Drivers with Contributing Factors	9
Contributing Factors.....	10

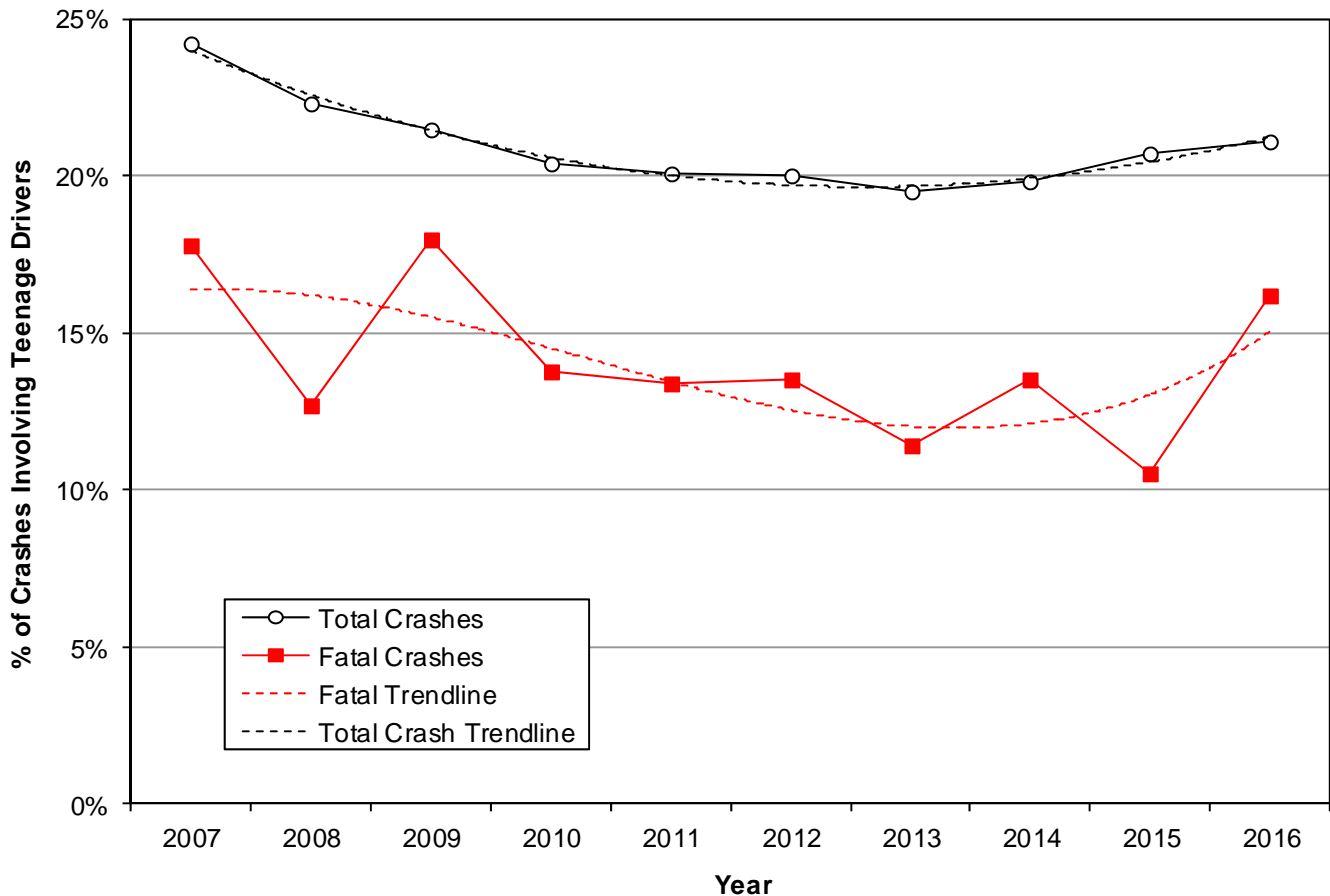
1

6

Trends

Teenage Driver Crashes (Utah 2007-2016)

Year	Property Damage Only			Injury			Fatal			Total		
	All	Teen Driver		All	Teen Driver		All	Teen Driver		All	Teen Driver	
	#	#	%	#	#	%	#	#	%	#	#	%
2007	42,368	9,990	23.6%	18,619	4,808	25.8%	258	46	17.8%	61,245	14,844	24.2%
2008	38,997	8,512	21.8%	17,125	4,007	23.4%	245	31	12.7%	56,367	12,550	22.3%
2009	35,398	7,500	21.2%	15,752	3,495	22.2%	217	39	18.0%	51,367	11,034	21.5%
2010	34,155	6,886	20.2%	14,995	3,181	21.2%	218	30	13.8%	49,368	10,097	20.5%
2011	36,418	7,268	20.0%	15,645	3,227	20.6%	224	30	13.4%	52,287	10,525	20.1%
2012	34,635	6,889	19.9%	15,765	3,216	20.4%	200	27	13.5%	50,600	10,132	20.0%
2013	39,301	7,541	19.2%	16,134	3,288	20.4%	202	23	11.4%	55,637	10,852	19.5%
2014	37,388	7,288	19.5%	16,426	3,401	20.7%	222	30	13.5%	54,036	10,719	19.8%
2015	42,089	8,646	20.5%	17,665	3,722	21.1%	258	27	10.5%	60,012	12,395	20.7%
2016	43,465	9,223	21.2%	18,747	3,894	20.8%	259	42	16.2%	62,471	13,159	21.1%
Total	384,214	79,743	20.8%	166,873	36,239	21.7%	2,303	325	14.1%	553,390	116,307	21.0%

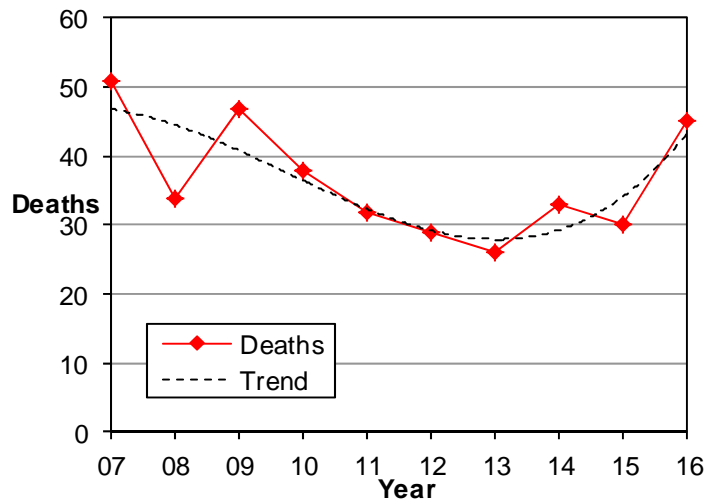


- Teenage drivers (aged 15-19 years) are a special concern because of their high crash rates and lack of driving experience.
- The 10-year trend in Utah shows that 21.0% of all crashes and 14.1% of fatal crashes involved a teenage driver.
- Teenage driver crashes had shown a decreasing trend for years, unfortunately the last few years have shown an increasing trend.

Trends

Fatal Crashes Involving Teenage Drivers (Utah 2007-2016)

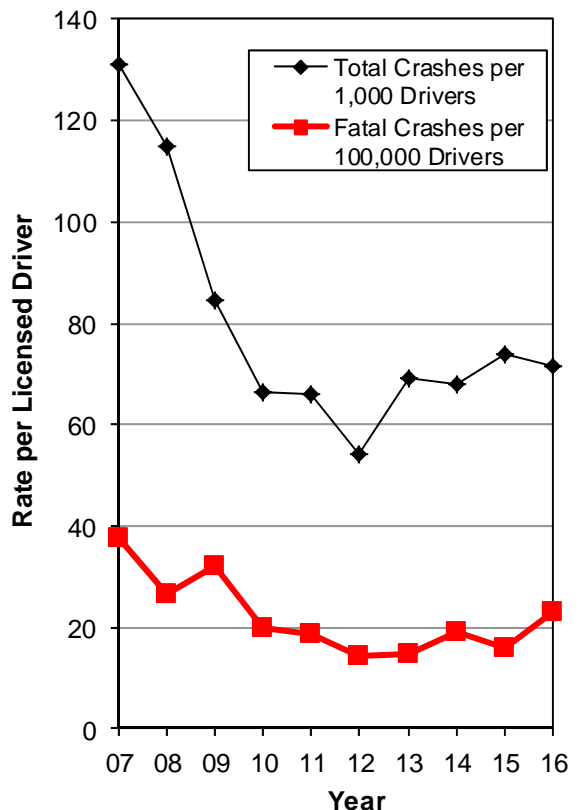
Teen Driver Crashes						
Year	Deaths			Fatal Crashes		
	All	Teen Driver	%	All	Teen Driver	%
	#	#	%	#	#	%
2007	299	51	17.1%	260	46	17.7%
2008	276	34	12.3%	244	31	12.7%
2009	244	47	19.3%	217	39	18.0%
2010	253	38	15.0%	218	30	13.8%
2011	243	32	13.2%	224	30	13.4%
2012	217	29	13.4%	200	27	13.5%
2013	220	26	11.8%	202	23	11.4%
2014	256	33	12.9%	222	30	13.5%
2015	278	30	10.8%	258	27	10.5%
2016	281	45	16.0%	259	42	16.2%
Total	2,567	365	14.2%	2,304	325	14.1%



- Over the past 10 years, the percentage of deaths and fatal crashes involving teenage drivers has fluctuated around 14% of all deaths and fatal crashes.
- On average, 37 people die a year in Utah from crashes involving a teenage driver.

Teenage Driver Crash Rates (Utah 2007-2016)

Year	Licensed Drivers	Fatal Crashes		All Crashes	
		#	Rate per 1,000 Licensed Drivers	#	Rate per 1,000 Licensed Drivers
2007	124,884	47	0.376	16,391	131.2
2008	120,039	32	0.267	13,792	114.9
2009	130,394	42	0.322	11,034	84.6
2010	151,877	30	0.198	10,097	66.5
2011	159,528	30	0.188	10,525	66.0
2012	186,586	27	0.145	10,132	54.3
2013	156,822	23	0.147	10,852	69.2
2014	157,613	30	0.190	10,719	68.0
2015	167,344	27	0.161	12,395	74.1
2016	183,665	42	0.229	13,159	71.6



- The teenage driver overall crash rate per licensed driver has shown a decreasing trend for the years 2007 to 2012 followed by an increasing trend for the years 2012-2016.
- 2007 had the highest overall crash rate per licensed driver while 2012 had the lowest overall rate.
- Over the past 10 years, the teenage driver fatal crash rate per licensed driver has shown a decreasing trend.
- 2007 had the highest fatal crash rate per licensed driver while 2012 had the lowest fatal rate.

Crash Conditions

Teenage Driver Crashes by County (Utah 2016)

County	PDO Crashes			Injury Crashes			Fatal Crashes			Total		
	All	Teen Driver		All	Teen Driver		All	Teen Driver		All	Teen Driver	
	#	#	%	#	#	%	#	#	%	#	#	%
Sanpete	265	72	27.2%	95	27	28.4%	4	1	25.0%	364	100	27.5%
Cache	1,557	430	27.6%	496	120	24.2%	11	2	18.2%	2,064	552	26.7%
Utah	6,376	1,697	26.6%	2,960	743	25.1%	29	4	13.8%	9,365	2,444	26.1%
Washington	1,845	492	26.7%	847	210	24.8%	14	4	28.6%	2,706	706	26.1%
Davis	3,972	951	23.9%	1,780	430	24.2%	24	4	16.7%	5,776	1,385	24.0%
Weber	2,836	692	24.4%	1,560	330	21.2%	17	6	35.3%	4,413	1,028	23.3%
Uintah	397	88	22.2%	100	20	20.0%	2	1	50.0%	499	109	21.8%
Box Elder	972	204	21.0%	378	81	21.4%	9	4	44.4%	1,359	289	21.3%
Wasatch	554	121	21.8%	165	29	17.6%	7	0	0.0%	726	150	20.7%
Tooele	749	162	21.6%	340	60	17.6%	18	1	5.6%	1,107	223	20.1%
Iron	698	129	18.5%	249	55	22.1%	4	0	0.0%	951	184	19.3%
Carbon	292	51	17.5%	90	21	23.3%	3	1	33.3%	385	73	19.0%
Salt Lake	19,674	3,762	19.1%	8,546	1,585	18.5%	67	10	14.9%	28,287	5,357	18.9%
Rich	58	9	15.5%	23	5	21.7%	0	0	n/a	81	14	17.3%
Juab	262	41	15.6%	86	14	16.3%	5	1	20.0%	353	56	15.9%
Morgan	131	19	14.5%	34	7	20.6%	1	0	0.0%	166	26	15.7%
Beaver	175	25	14.3%	76	14	18.4%	0	0	n/a	251	39	15.5%
Duchesne	234	40	17.1%	67	6	9.0%	1	0	0.0%	302	46	15.2%
Sevier	274	33	12.0%	110	24	21.8%	6	0	0.0%	390	57	14.6%
Millard	301	37	12.3%	128	25	19.5%	5	1	20.0%	434	63	14.5%
Summit	898	106	11.8%	291	45	15.5%	4	0	0.0%	1,193	151	12.7%
Emery	170	16	9.4%	79	16	20.3%	7	0	0.0%	256	32	12.5%
Grand	153	11	7.2%	65	9	13.8%	4	2	50.0%	222	22	9.9%
Kane	156	11	7.1%	50	9	18.0%	2	0	0.0%	208	20	9.6%
Daggett	13	1	7.7%	0	0	n/a	1	0	0.0%	14	1	7.1%
Wayne	40	3	7.5%	24	1	4.2%	0	0	n/a	64	4	6.3%
San Juan	220	13	5.9%	38	2	5.3%	8	0	0.0%	266	15	5.6%
Garfield	165	7	4.2%	60	5	8.3%	5	0	0.0%	230	12	5.2%
Piute	28	0	0.0%	10	1	10.0%	1	0	0.0%	39	1	2.6%
Statewide	43,465	9,223	21.2%	18,747	3,894	20.8%	259	42	16.2%	62,471	13,159	21.1%

- Overall, Sanpete (28%), Cache (27%), Utah (26%), and Washington (26%) counties had the highest percentages of crashes involving a teenage driver.
- Overall, Piute (3%), Garfield (5%), and San Juan (6%) counties had the lowest percentages of crashes involving a teenage driver.
- Statewide, teenage driver crashes represented 21.1% of all crashes and 16.2% of all fatal crashes.

Previous Driving Violations of Teens in Fatal Crashes (Utah 2016)

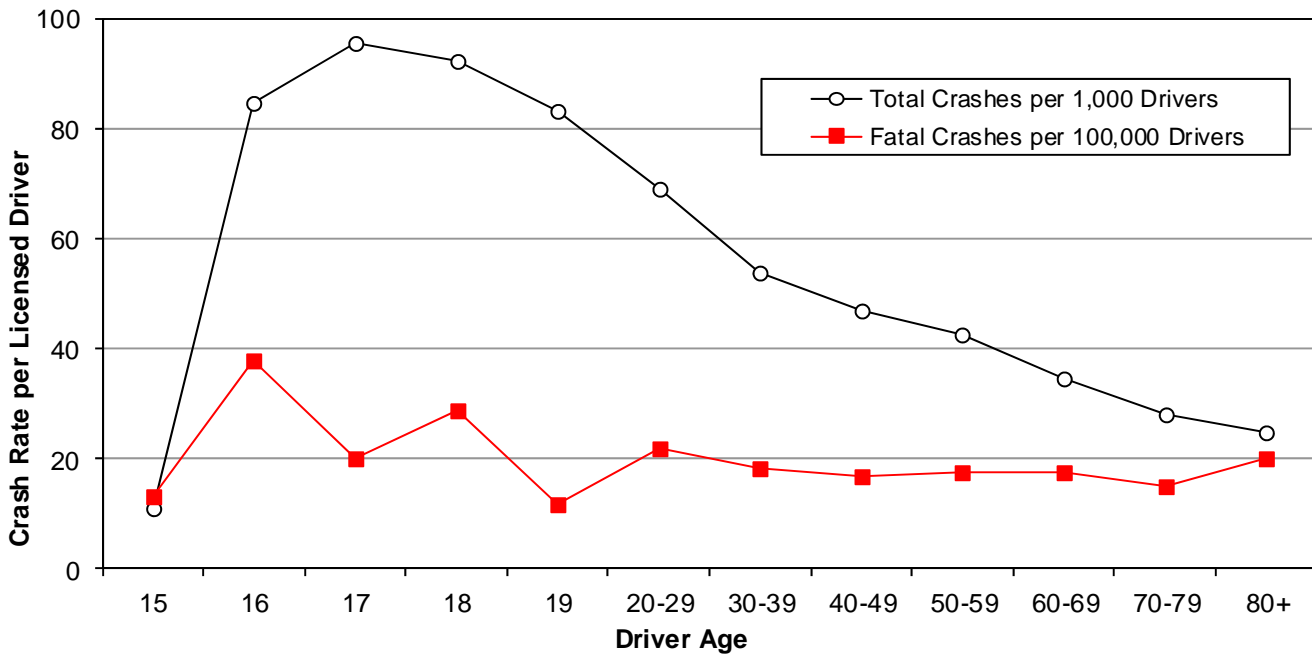


- Of the 42 teenage drivers in fatal crashes, 4 (10%) had been previously convicted of a moving traffic violation in the past five years. The highest number of violations by one teen driver was 11 in the past five years.

Crash Conditions

Age of Teenage Drivers in Crashes (Utah 2016)

Teenage Drivers												
Age	PDO Crashes			Injury Crashes			Fatal Crashes			Total		
	#	%	Rate per 1,000 Drivers	#	%	Rate per 1,000 Drivers	#	%	Rate per 1,000 Drivers	#	%	Rate per 1,000 Drivers
15	153	1.5%	6.7	91	2.1%	4.0	3	7.1%	0.132	247	1.7%	10.9
16	2,259	22.0%	61.2	857	19.9%	23.2	14	33.3%	0.379	3,130	21.4%	84.8
17	2,694	26.3%	67.7	1,105	25.7%	27.8	8	19.0%	0.201	3,807	26.1%	95.6
18	2,714	26.5%	65.2	1,128	26.3%	27.1	12	28.6%	0.288	3,854	26.4%	92.5
19	2,435	23.7%	57.1	1,115	26.0%	26.2	5	11.9%	0.117	3,555	24.4%	83.4
Total	10,255	100.0%	55.8	4,296	100.0%	23.4	42	100.0%	0.229	14,593	100.0%	79.5



- Drivers aged 17 years had the highest total crash rate per licensed driver.
- Drivers aged 16 years had the highest fatal crash rate per licensed driver.

Gender of Teenage Drivers in Crashes (Utah 2016)

Teenage Drivers								
Gender	PDO Crashes		Injury Crashes		Fatal Crashes		Total	
	#	%	#	%	#	%	#	%
Male	5,352	52.2%	2,101	48.9%	24	57.1%	7,477	51.2%
Female	4,899	47.8%	2,194	51.1%	18	42.9%	7,111	48.7%
Unknown	4	0.0%	1	0.0%	0	0.0%	5	0.0%
Total	10,255	100.0%	4,296	100.0%	42	100.0%	14,593	100.0%

- The majority of teen drivers in all motor vehicle crashes (51%) and fatal crashes (57%) were male.
- The majority of teen drivers in injury crashes (51%) were female.

Crash Conditions

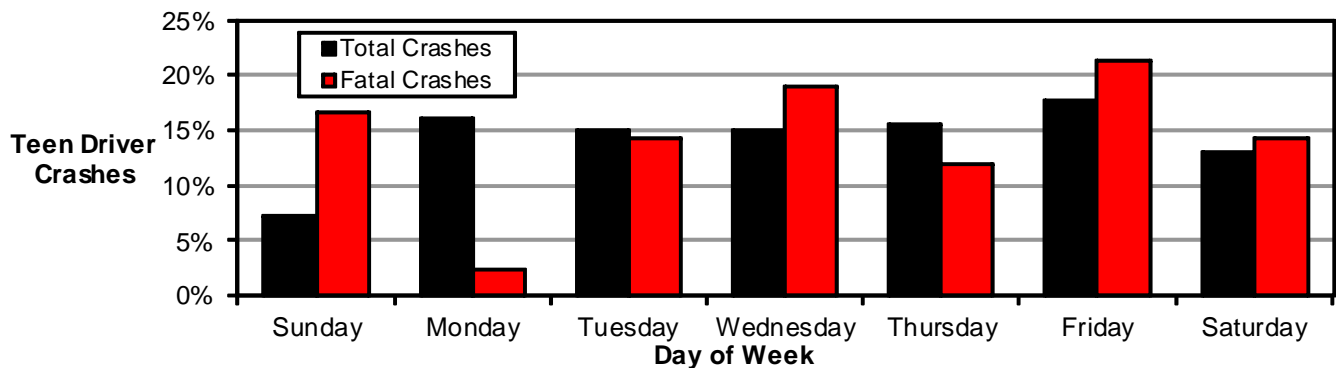
Teenage Driver Crashes by Month (Utah 2016)

Teenage Driver Crashes								
Month	PDO Crashes		Injury Crashes		Fatal Crashes		Total	
	#	Rate per Day	#	Rate per Day	#	Rate per Day	#	Rate per Day
January	887	28.6	304	9.8	0	0.00	1,191	38.4
February	741	25.6	264	9.1	4	0.14	1,009	34.8
March	681	22.0	330	10.6	1	0.03	1,012	32.6
April	681	22.7	284	9.5	3	0.10	968	32.3
May	760	24.5	329	10.6	7	0.23	1,096	35.4
June	644	21.5	348	11.6	7	0.23	999	33.3
July	606	19.5	340	11.0	2	0.06	948	30.6
August	756	24.4	332	10.7	3	0.10	1,091	35.2
September	875	29.2	382	12.7	4	0.13	1,261	42.0
October	797	25.7	323	10.4	3	0.10	1,123	36.2
November	939	31.3	336	11.2	6	0.20	1,281	42.7
December	856	27.6	322	10.4	2	0.06	1,180	38.1
Total	9,223	25.2	3,894	10.6	42	0.11	13,159	36.0

- Overall, November (42.7) and September (42.0) had the highest rates per day for teenage driver crashes.
- The highest rate per day of fatal teenage driver crashes occurred in May and June (0.23).

Teenage Driver Crashes by Day of Week (Utah 2016)

Teenage Driver Crashes								
Day of Week	PDO Crashes		Injury Crashes		Fatal Crashes		Total	
	#	%	#	%	#	%	#	%
Sunday	678	7.4%	275	7.1%	7	16.7%	960	7.3%
Monday	1,486	16.1%	638	16.4%	1	2.4%	2,125	16.1%
Tuesday	1,399	15.2%	573	14.7%	6	14.3%	1,978	15.0%
Wednesday	1,365	14.8%	612	15.7%	8	19.0%	1,985	15.1%
Thursday	1,465	15.9%	577	14.8%	5	11.9%	2,047	15.6%
Friday	1,660	18.0%	675	17.3%	9	21.4%	2,344	17.8%
Saturday	1,170	12.7%	544	14.0%	6	14.3%	1,720	13.1%
Total	9,223	100.0%	3,894	100.0%	42	100.0%	13,159	100.0%

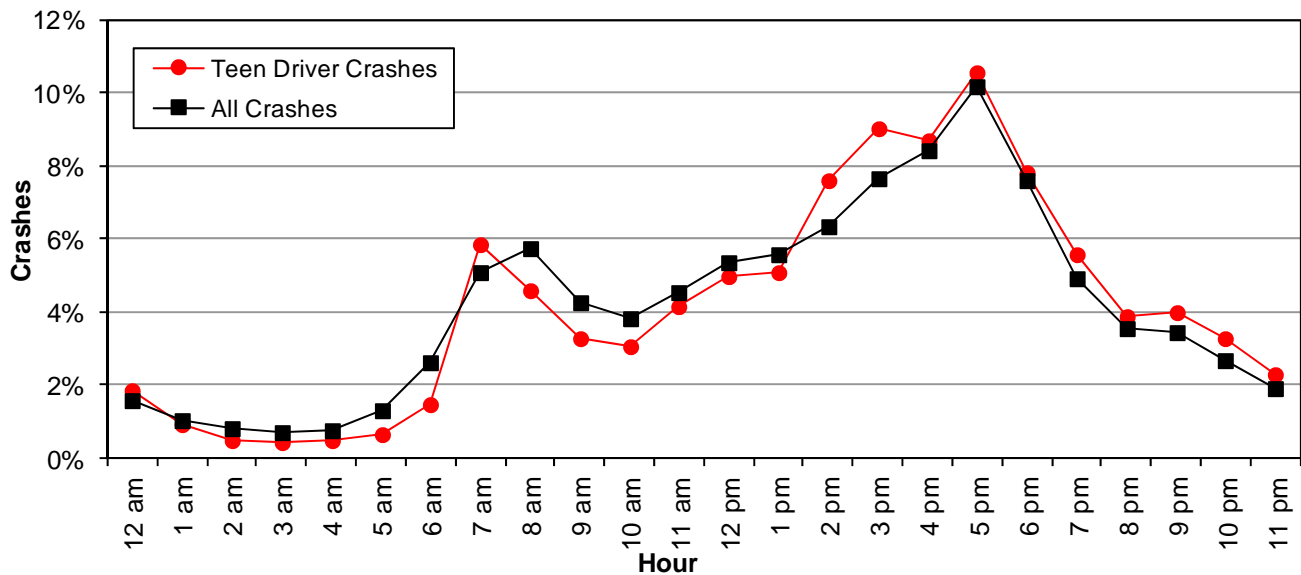


- Overall, the highest percentage of teenage driver crashes occurred on Friday (18%).
- The highest percentage of fatal teenage driver crashes occurred on Friday (21%).

Crash Conditions

Teenage Driver Crashes by Hour (Utah 2016)

Teenage Driver Crashes								
Hour	PDO Crashes		Injury Crashes		Fatal Crashes		Total	
	#	%	#	%	#	%	#	%
Midnight	176	1.9%	69	1.8%	1	2.4%	246	1.9%
1 a.m.	74	0.8%	41	1.1%	3	7.1%	118	0.9%
2 a.m.	43	0.5%	22	0.6%	2	4.8%	67	0.5%
3 a.m.	31	0.3%	23	0.6%	2	4.8%	56	0.4%
4 a.m.	43	0.5%	22	0.6%	0	0.0%	65	0.5%
5 a.m.	60	0.7%	23	0.6%	0	0.0%	83	0.6%
6 a.m.	146	1.6%	44	1.1%	0	0.0%	190	1.4%
7 a.m.	558	6.1%	209	5.4%	1	2.4%	768	5.8%
8 a.m.	455	4.9%	148	3.8%	0	0.0%	603	4.6%
9 a.m.	307	3.3%	124	3.2%	0	0.0%	431	3.3%
10 a.m.	283	3.1%	117	3.0%	0	0.0%	400	3.0%
11 a.m.	386	4.2%	159	4.1%	2	4.8%	547	4.2%
Noon	466	5.1%	185	4.8%	1	2.4%	652	5.0%
1 p.m.	477	5.2%	190	4.9%	4	9.5%	671	5.1%
2 p.m.	714	7.7%	283	7.3%	1	2.4%	998	7.6%
3 p.m.	839	9.1%	344	8.8%	3	7.1%	1,186	9.0%
4 p.m.	795	8.6%	354	9.1%	0	0.0%	1,149	8.7%
5 p.m.	948	10.3%	441	11.3%	0	0.0%	1,389	10.6%
6 p.m.	695	7.5%	335	8.6%	4	9.5%	1,034	7.9%
7 p.m.	517	5.6%	209	5.4%	8	19.0%	734	5.6%
8 p.m.	359	3.9%	149	3.8%	3	7.1%	511	3.9%
9 p.m.	349	3.8%	177	4.5%	0	0.0%	526	4.0%
10 p.m.	296	3.2%	132	3.4%	3	7.1%	431	3.3%
11 p.m.	206	2.2%	94	2.4%	4	9.5%	304	2.3%
Total	9,223	100.0%	3,894	100.0%	42	100.0%	13,159	100.0%



- Teenage driver total crashes were highest from 2:00 p.m. to 6:59 p.m. (after-school hours).
- Teenage driver crashes were more likely to occur in the afternoon and evening than other crashes.

Crash Conditions

Teenage Driver Crashes by Day of Week and Hour (Utah 2016)

Teenage Driver Crashes								
Hour	Day of Week							Total #
	Sun	Mon	Tue	Wed	Thu	Fri	Sat	
Midnight	41	30	21	24	37	32	62	247
1 a.m.	32	11	3	10	13	18	32	119
2 a.m.	22	6	5	6	3	8	16	66
3 a.m.	9	7	10	3	4	12	10	55
4 a.m.	14	10	4	4	7	8	18	65
5 a.m.	14	17	7	10	12	13	10	83
6 a.m.	17	35	31	21	26	42	18	190
7 a.m.	29	137	142	143	157	123	36	767
8 a.m.	28	100	143	102	81	103	47	604
9 a.m.	32	72	65	75	71	63	53	431
10 a.m.	37	55	62	55	57	67	67	400
11 a.m.	34	101	77	78	83	92	82	547
Noon	28	94	87	111	116	100	116	652
1 p.m.	56	126	89	78	79	128	115	671
2 p.m.	68	195	136	155	153	179	112	998
3 p.m.	52	200	205	200	176	236	117	1,186
4 p.m.	61	196	196	181	185	207	123	1,149
5 p.m.	65	218	244	241	249	234	138	1,389
6 p.m.	73	159	167	168	157	202	108	1,034
7 p.m.	68	112	89	117	118	128	102	734
8 p.m.	47	82	67	58	89	86	82	511
9 p.m.	51	77	59	63	83	117	76	526
10 p.m.	39	56	36	49	60	90	100	430
11 p.m.	42	29	33	34	31	54	81	304
Total	959	2,125	1,978	1,986	2,047	2,342	1,721	13,158

High = 100+
Medium = 36-99
Low = 0-35

- Teenage driver crashes were highest everyday Monday to Saturday from 2:00 p.m. to 7:59 p.m. There was also a peak in the weekday morning during the 7:00 and 8:00 a.m. hours.
- Teenage driver crashes were lowest everyday from midnight to 6:59 a.m.

Travel Speed of Teenage Driver Vehicles in Crashes (Utah 2016)

- Nearly two-thirds (61% of known) of teen driver vehicles in total crashes were traveling 1-39 MPH.
- In contrast, teenage driver vehicles in fatal crashes were more likely to be traveling at higher speeds. The majority (76% of known) of teenage driver vehicles in fatal crashes were traveling 40 MPH or higher.
- Crashes involving teenage driver vehicles traveling 40 MPH or higher were 7.8 times more likely to be fatal.

Teenage Driver Vehicles								
Travel Speed	PDO Crashes		Injury Crashes		Fatal Crashes		Total	
	#	%	#	%	#	%	#	%
Stopped	811	7.9%	360	8.4%	2	4.8%	1,173	8.0%
1-9 MPH	1,175	11.5%	318	7.4%	2	4.8%	1,495	10.2%
10-19 MPH	1,565	15.3%	603	14.0%	1	2.4%	2,169	14.9%
20-29 MPH	1,238	12.1%	475	11.1%	2	4.8%	1,715	11.8%
30-39 MPH	1,208	11.8%	568	13.2%	2	4.8%	1,778	12.2%
40-49 MPH	776	7.6%	486	11.3%	8	19.0%	1,270	8.7%
50-59 MPH	498	4.9%	207	4.8%	8	19.0%	713	4.9%
60-69 MPH	445	4.3%	193	4.5%	5	11.9%	643	4.4%
70-79 MPH	377	3.7%	188	4.4%	3	7.1%	568	3.9%
80-89 MPH	70	0.7%	45	1.0%	2	4.8%	117	0.8%
90+ MPH	7	0.1%	12	0.3%	2	4.8%	21	0.1%
Unknown	2,085	20.3%	841	19.6%	5	11.9%	2,931	20.1%
Total	10,255	100.0%	4,296	100.0%	42	100.0%	14,593	100.0%

Crash Conditions

Number of Occupants in Teenage Driven Vehicles (Utah 2016)

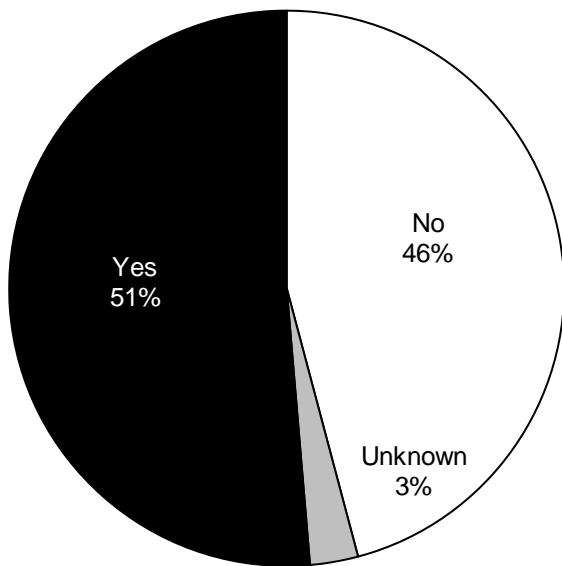
Teenage Driven Vehicles								
Number of Occupants	PDO Crashes		Injury Crashes		Fatal Crashes		Total	
	#	%	#	%	#	%	#	%
1	7,629	74.4%	2,790	64.9%	19	45.2%	10,438	71.5%
2	1,805	17.6%	984	22.9%	12	28.6%	2,801	19.2%
3	536	5.2%	321	7.5%	4	9.5%	861	5.9%
4 or more	285	2.8%	201	4.7%	7	16.7%	493	3.4%
Total	10,255	100.0%	4,296	100.0%	42	100.0%	14,593	100.0%

- Over two-thirds of teenage driven vehicles (72%) in crashes contained only the teenage driver.
- Teenage driven vehicles with passengers were more likely to be in injury or fatal crashes.
- Teenage driver vehicles with passengers in crashes were 3.0 times more likely to be fatal than crashes with only the teenage driver.

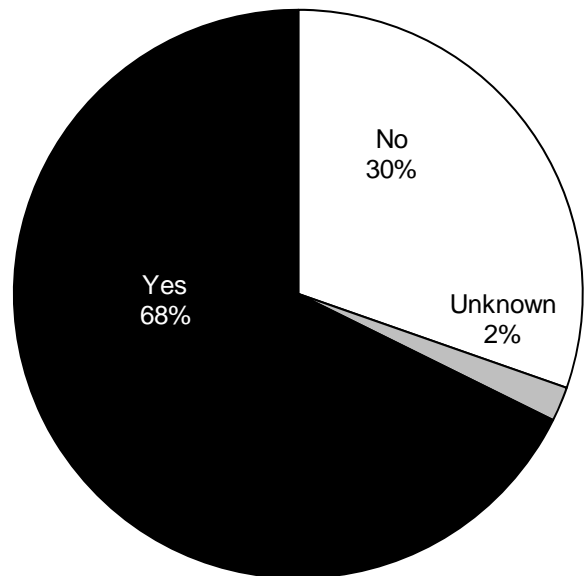
Teenage Drivers with Contributing Factors in Crashes (Utah 2016)

Teenage Drivers/Vehicles								
Driver/Vehicle with a Contributing Factor(s)	PDO Crashes		Injury Crashes		Fatal Crashes		Total	
	#	%	#	%	#	%	#	%
Yes	6,836	66.7%	3,017	70.2%	23	54.8%	9,876	67.7%
No	3,211	31.3%	1,201	28.0%	18	42.9%	4,430	30.4%
Unknown	208	2.0%	78	1.8%	1	2.4%	287	2.0%
Total	10,255	100.0%	4,296	100.0%	42	100.0%	14,593	100.0%

All Drivers



Teenage Drivers



- Some form of poor driver performance is present in the majority of crashes.
- 68.7% of teenage drivers had a contributing factor in total crashes.
- Teenage drivers were 2.2 times more likely to have a contributing factor in a crash than drivers of other ages.

Crash Conditions

Contributing Factors of Teenage Driver Crashes (Utah 2016)

Teenage Drivers/Vehicles								
Contributing Factors	PDO Crashes		Injury Crashes		Fatal Crashes		Total	
	#	%	#	%	#	%	#	%
Followed Too Closely	1,970	19.2%	848	17.8%	1	2.2%	2,819	18.7%
Failed to Yield Right of Way	1,535	14.9%	861	18.1%	6	13.0%	2,402	15.9%
Speed Too Fast	1,233	12.0%	476	10.0%	7	15.2%	1,716	11.4%
Driver Distraction	727	7.1%	423	8.9%	6	13.0%	1,156	7.7%
Failed to Keep in Proper Lane	758	7.4%	325	6.8%	1	2.2%	1,084	7.2%
Other Improper Driving	434	4.2%	227	4.8%	0	0.0%	661	4.4%
Vision Obscured by Weather Condition	472	4.6%	119	2.5%	1	2.2%	592	3.9%
Improper Turn	394	3.8%	163	3.4%	1	2.2%	558	3.7%
Disregard Traffic Signal/Sign	274	2.7%	243	5.1%	0	0.0%	517	3.4%
Ran Off Road	270	2.6%	124	2.6%	7	15.2%	401	2.7%
Improper Lane Change	315	3.1%	46	1.0%	1	2.2%	362	2.4%
Overcorrected	156	1.5%	112	2.4%	1	2.2%	269	1.8%
Improper Backing	254	2.5%	14	0.3%	0	0.0%	268	1.8%
Driver Asleep/Fatigue	159	1.5%	91	1.9%	3	6.5%	253	1.7%
Swerved or Evasive Action	149	1.4%	89	1.9%	0	0.0%	238	1.6%
Improper Parking/Stopping	154	1.5%	48	1.0%	0	0.0%	202	1.3%
Vehicle Other Defective Condition	106	1.0%	49	1.0%	0	0.0%	155	1.0%
Vision Obscured by Moving Vehicle	102	1.0%	52	1.1%	1	2.2%	155	1.0%
Driving Under the Influence	85	0.8%	67	1.4%	0	0.0%	152	1.0%
Vehicle Brakes	93	0.9%	53	1.1%	0	0.0%	146	1.0%
Hit and Run	106	1.0%	25	0.5%	1	2.2%	132	0.9%
Reckless/Aggressive Driving	67	0.7%	57	1.2%	3	6.5%	127	0.8%
Vehicle Tires	82	0.8%	20	0.4%	1	2.2%	103	0.7%
Vision Obscured by Glare	63	0.6%	25	0.5%	0	0.0%	88	0.6%
Vision Obscured by Parked Vehicle	59	0.6%	26	0.5%	0	0.0%	85	0.6%
Vision Obscured by Other	40	0.4%	30	0.6%	0	0.0%	70	0.5%
Driver Emotional Prior to Crash	32	0.3%	34	0.7%	1	2.2%	67	0.4%
Improper Passing	46	0.4%	9	0.2%	0	0.0%	55	0.4%
Driver Condition Other	30	0.3%	24	0.5%	0	0.0%	54	0.4%
Wrong Side/Wrong Way	23	0.2%	22	0.5%	2	4.3%	47	0.3%
Windshield or Other Window Obscured	30	0.3%	12	0.3%	0	0.0%	42	0.3%
Disregard Road Markings	17	0.2%	9	0.2%	2	4.3%	28	0.2%
Driver Illness/Medical	9	0.1%	17	0.4%	0	0.0%	26	0.2%
Vision Obscured by Vegetation	15	0.1%	7	0.1%	0	0.0%	22	0.1%
Vision Obscured by Building, Sign, etc.	12	0.1%	8	0.2%	0	0.0%	20	0.1%
Improper Signal	13	0.1%	2	0.0%	0	0.0%	15	0.1%
Total	10,284	100.0%	4,757	100.0%	46	100.0%	15,087	100.0%

- Some form of poor driver performance is present in the majority of crashes. The leading contributing factors for all teenage driver crashes were followed too closely (19%), failed to yield right of way (16%), speed too fast (11%), and driver distraction (8%).
- The leading contributing factors in fatal teenage driver crashes were speed too fast (15%) and ran off road (15%).
- Compared to drivers of all ages, teenage drivers were more likely to have a contributing factor of failure to yield right of way, followed too closely, and driver distraction.
- The contributing factors that contributed more to injury crashes than non-injury crashes were: failure to yield right of way, followed too closely, speed too fast, and driver distraction.