

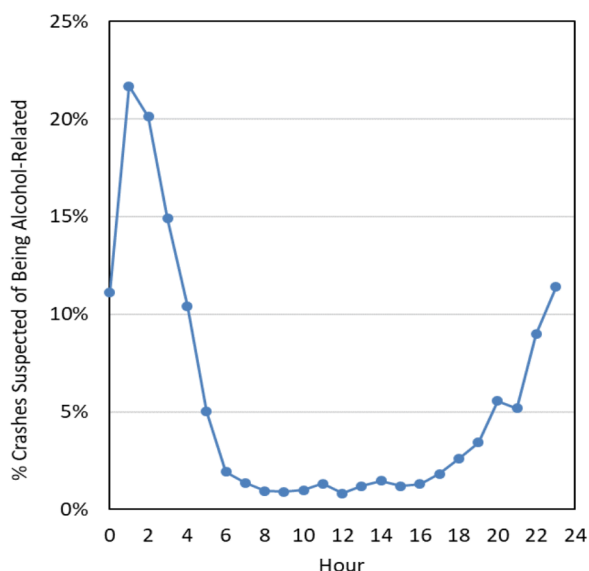
Alcohol



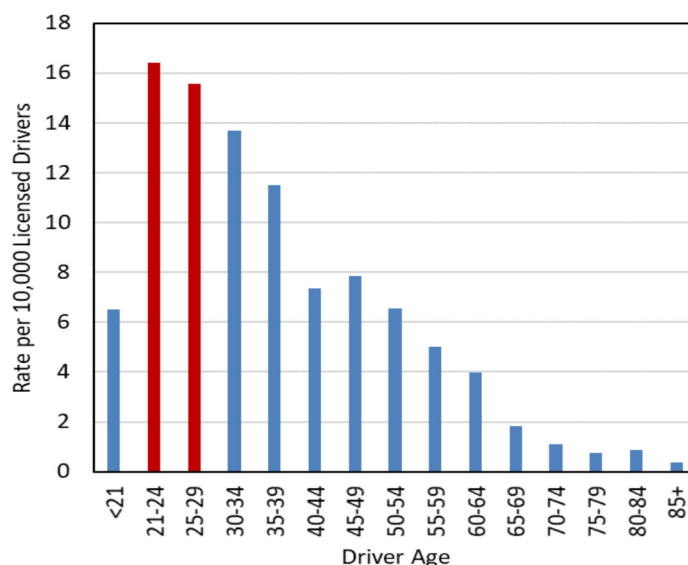
- 1,825 alcohol-related driver crashes occurred in Utah, which resulted in 1,095 injured persons and 55 deaths. Out of the 55 deaths, 36 occurred in crashes with at least one drunk driver (BAC \geq 0.08).
- 2.9% of the crashes in Utah involved an alcohol-related driver.

Alcohol-related crashes were 6.7 times more likely to be fatal than other crashes.

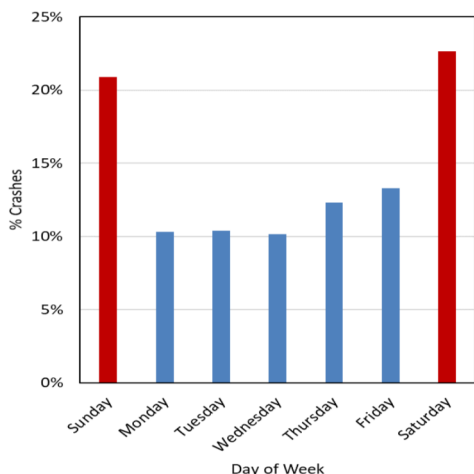
Percent of Total crashes with an Alcohol-Related Driver by Hour (Utah 2017)



Rate of Alcohol-Related Drivers in Crashes per Licensed Driver (Utah 2017)



Alcohol-Related Driver Crashes by Day of Week (Utah 2017)



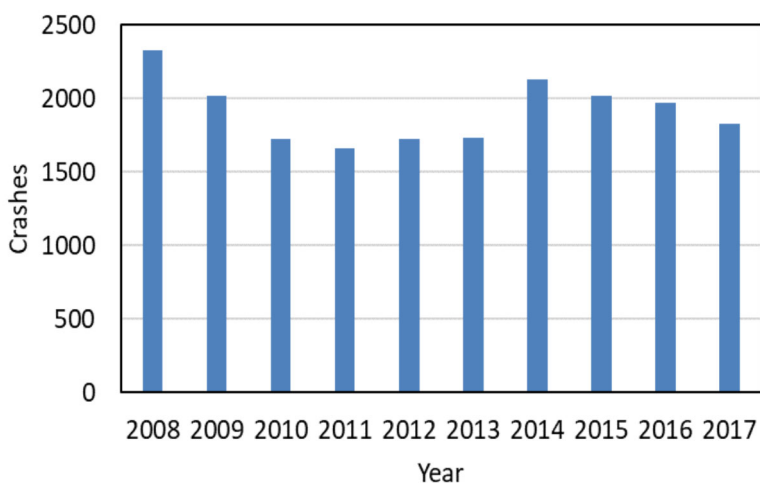
- Drivers aged 21 to 29 had the highest rates of alcohol-related crashes.
- 152 (8%) of the drivers were under the age of 21 years.
- While 3% of total crashes involved an alcohol-suspected driver, 15% of crashes occurring during the hours of 11 p.m. and 4 a.m. involved an alcohol-related driver.
- The highest percentage of alcohol-related driver crashes occurred on weekends (44%).

Note: A non-fatal crash is considered alcohol-related when at least one driver tested positive for alcohol, or if the investigating officer suspected the driver used alcohol. A drunk driver fatal crash is a crash resulting in one or more deaths involving at least one driver with a blood alcohol concentration (BAC) of .08 grams per deciliter or above.

Alcohol

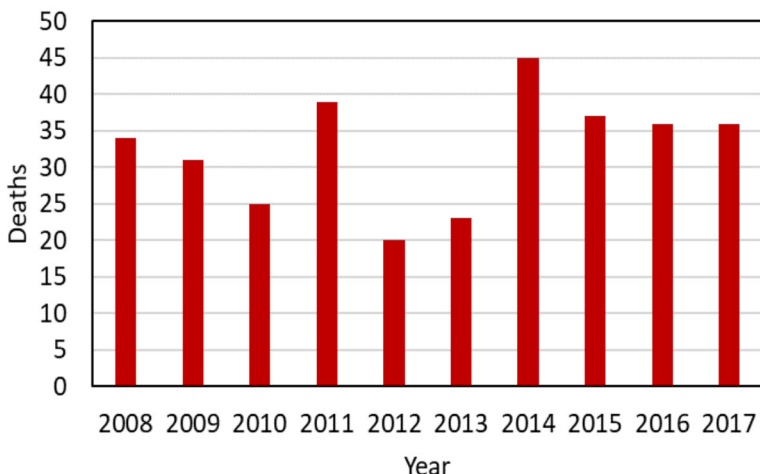


Alcohol-Related Driver Crashes (Utah 2008-2017)



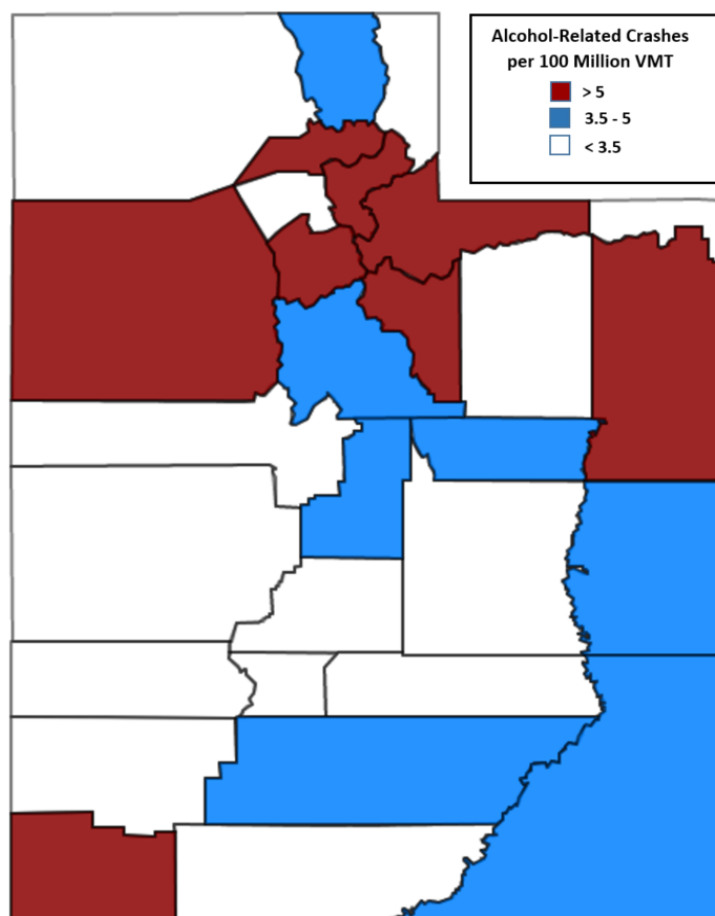
- The number of alcohol-related driver crashes decreased for the third straight year.

Deaths from Drunk Drivers (BAC ≥ 0.08) (Utah 2008-2017)



- The number of deaths from drunk drivers (BAC ≥ 0.08) remained unchanged (36 deaths) in 2017 compared to 2016.

Alcohol-Related Driver Crashes by County (Utah 2017)



- Salt Lake, Weber, Wasatch, Morgan, Tooele, Summit, Washington, and Uintah counties (in that order) had the highest alcohol-related crash rates per miles traveled.
- Piute, Juab, Rich, and Wayne counties had the lowest rates of alcohol-related crashes.