

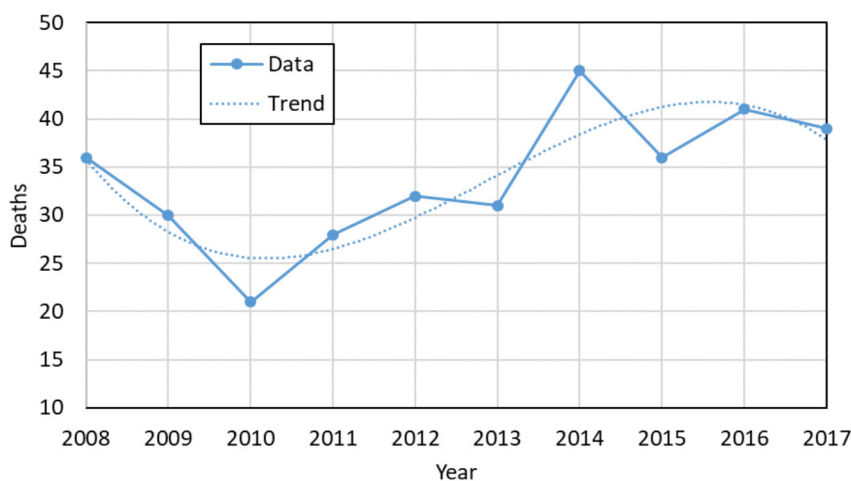
Motorcycles



- There were 1,102 motorcycle crashes in Utah, resulting in 966 injured motorcyclists and 39 motorcyclist deaths.
- Motorcyclists accounted for less than 1% of persons in crashes and 14% of deaths.

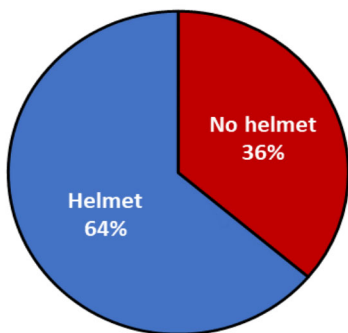
Motorcycle crashes were 9.5 times more likely to result in a death than other crashes.

Motorcyclist Deaths (2008-2017)



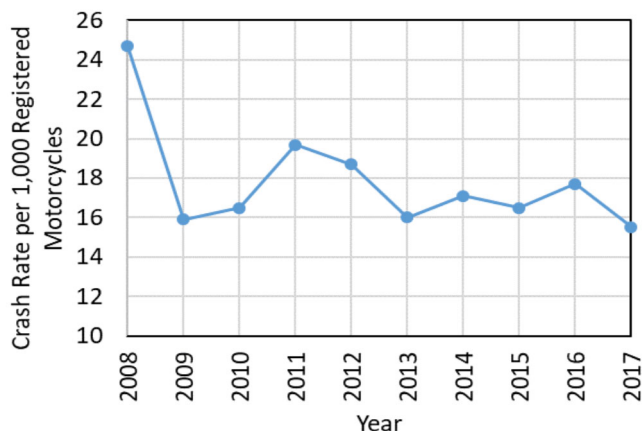
- Motorcycle deaths have been increasing in the last 7 years.
- However, motorcycle crash rates per registered motorcycles have remained at similar levels in the last five years.

Helmet Use of Motorcyclists in Crashes (Utah 2017)



- Over one third of motorcyclists in crashes did not wear a helmet.
- Motorcyclists in crashes who wore a helmet were 45% less likely to have fatal injuries compared to those who did not wear a helmet.

Motorcyclist Crash Rates per Registered Motorcycles (Utah 2008-2017)

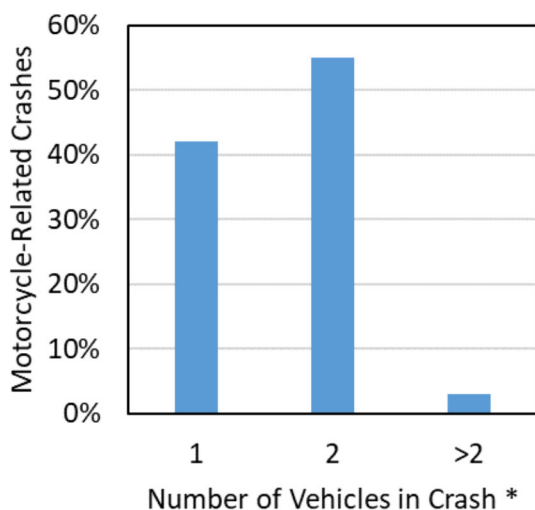


Note: Utah law requires anyone under the age of 18 years riding a motorcycle to wear a helmet.

Motorcycles



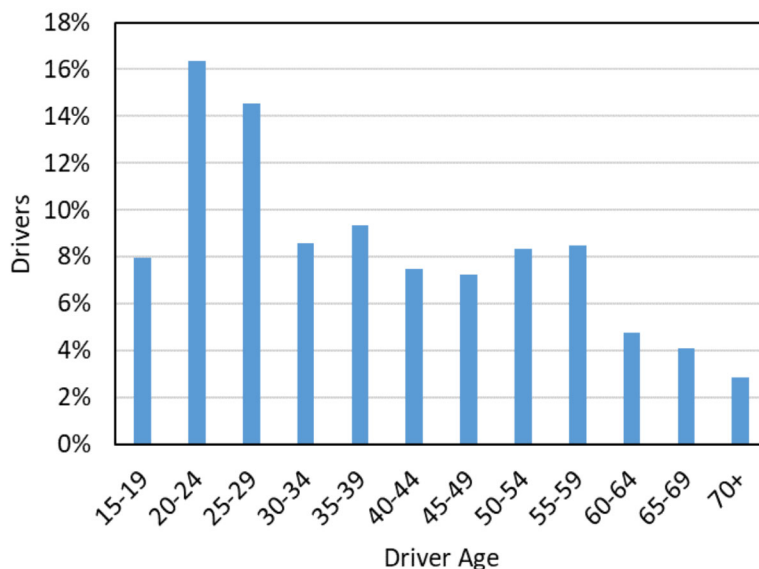
Number of Vehicles in Motorcycle-related Crashes (Utah 2017)



* Including motorcycles

- 42% of crashes involving motorcycles did not include a collision with other vehicle, and 55% included only one more motor-vehicle.

Age of Motorcycle Drivers in All Crashes (Utah 2017)



- Over 30% of motorcycle drivers in crashes were between 20 and 29 years of age.

Leading Contributing Factors of Motor-Vehicle (Non-motorcycle) Drivers in Motorcycle Crashes (Utah 2017)

1. Failed to Yield the Right of Way (33%)
2. Followed Too Closely (5.9%)
3. Improper Turn (4.9%)
4. Improper Lane Change (4.1%)

* 39% of motor-vehicle (non-motorcycle) drivers had no contributing factor in the crash

Leading Contributing Factors of Motorcycle Drivers in Motorcycle Crashes (Utah 2017)

1. Followed Too Closely (8.3%)
2. Too Fast for Conditions (7.1%)
3. Failed to keep in proper lane (5.6%)
4. Exceeded Posted Speed Limit (4.2%)

* 47% of motorcycle drivers had no contributing factor in the crash

Manner of Collision of Motorcycle-Related Crashes with Two or More Vehicles (Utah 2017)

1. Angle (43%)
2. Front to Rear (30%)
3. Sideswipe Same Direction (14%)

The leading contributing factor of drivers in collisions with motorcycles was failing to yield the right of way. The most common manner of collision was angle (a turning maneuver).