

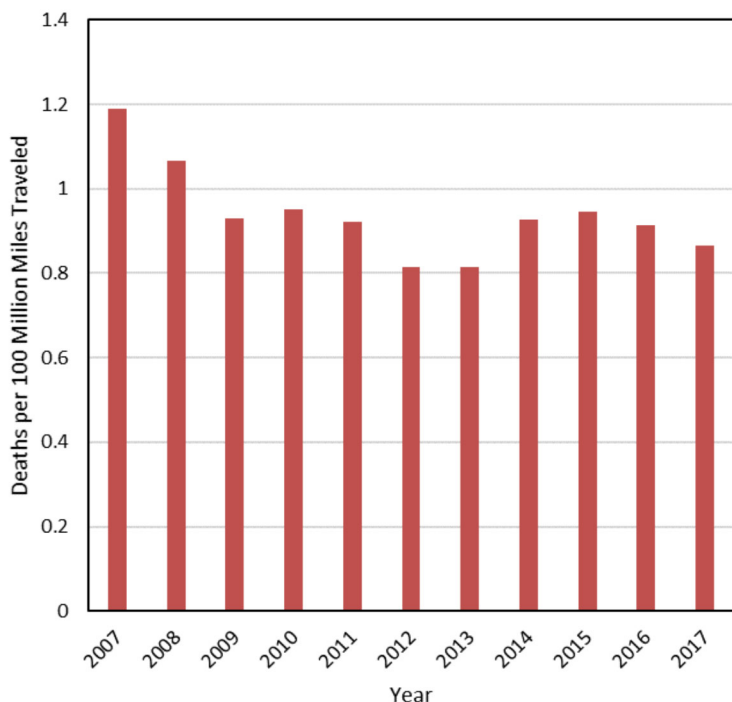
Overview



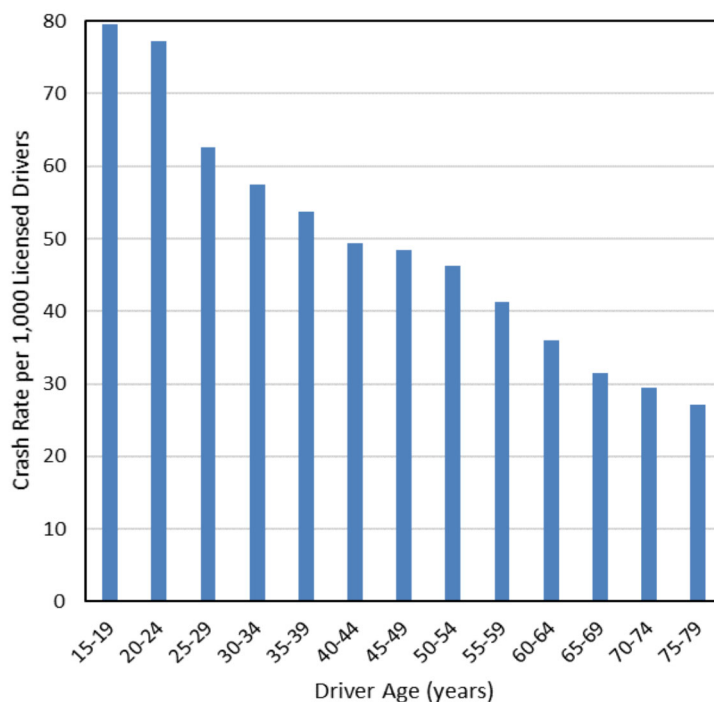
In 2017:

- 62,855 motor vehicle crashes occurred in Utah, including 247 fatal crashes, which resulted in 25,833 injured persons and 273 deaths.
- On average, a motor vehicle crash occurred in Utah every 8.4 minutes, a person was injured in a crash every 20 minutes, and a person died in a crash every 32 hours.

**Deaths per 100 Million Miles Traveled by Year
(Utah 2007-2017)**



**Crash Rates per Licensed Drivers by Age
(Utah 2017)**



- Traffic deaths decreased for the first time after 5 years, and the death rates have decreased in the last three years.

- Drivers age 15-24 years had the highest crash rates per licensed driver.

Driver Contributing Circumstances* for All Crashes (% of all crashes)

1. Followed too Closely (21%)
2. Speed (11%)
3. Failed to Keep in Proper Lane (9%)
4. Improper Lane Change (3%)
5. Disregard Traffic Signals (3%)

Driver distraction was a factor in 8.9% of all crashes

Driver Contributing Circumstances* for Fatal Crashes (% of fatal crashes)

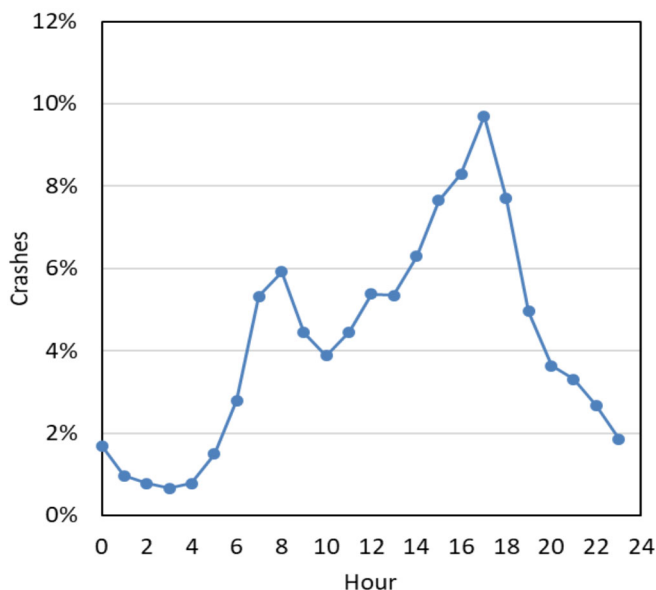
1. Failed to keep in proper lane (21%)
2. Speed (17%)
3. Failed to Yield the Right-of-Way (14%)
4. Ran Off Road (6%)
5. Disregard Traffic Signals (4%)

* Based on data from driver of vehicle number 1

Overview

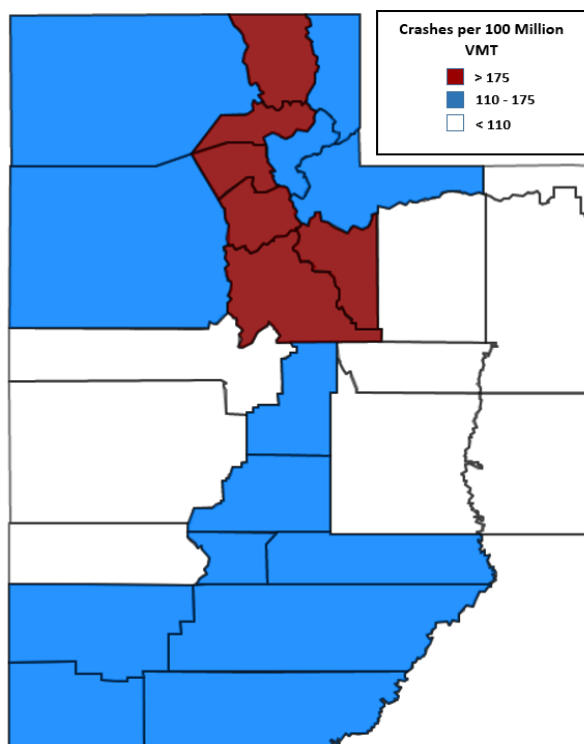


Motor Vehicle Crashes by Hour (Utah 2017)



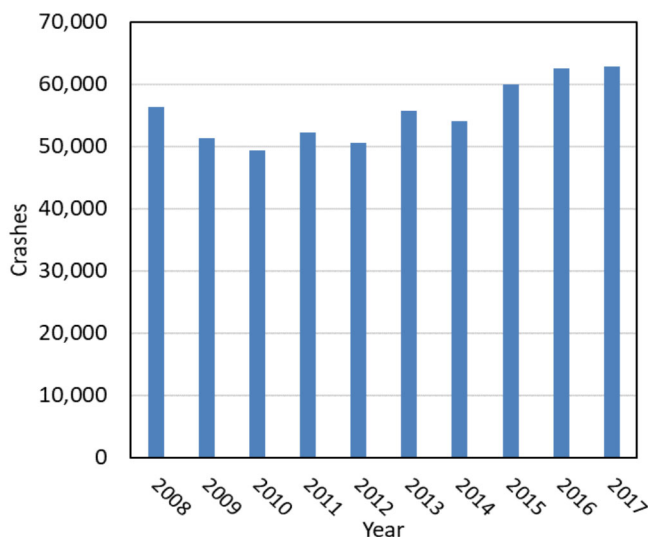
- Crashes were the highest between 3:00 p.m. and 7 p.m.

County Crash Rates by Miles Traveled (Utah 2017)



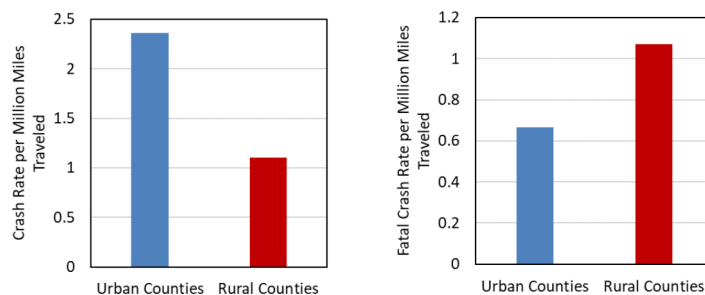
- Salt Lake, Weber, Utah, Cache, Davis, and Wasatch counties (in that order) had the highest crash rates per miles traveled.

Traffic Crashes by Year (Utah 2008-2017)



- The total number of crashes has been increasing since 2014. However, the rate of change in 2017 decreased compared to 2016 and 2015.

Urban/Rural Location (Utah 2017)



- Urban areas had a higher rate of total crashes per miles traveled, while rural areas had a higher fatal crash rate.
- Rural crashes were 3.5 times more likely to be fatal than urban crashes.