

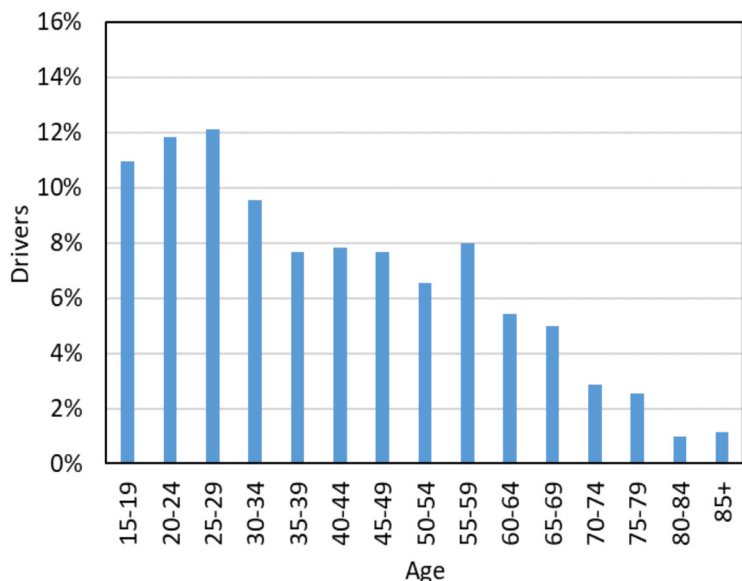
# Pedestrians



- In 2017, 772 pedestrians were involved in motor vehicle crashes; 670 were injured and 42 were killed.
- The 42 pedestrian fatalities in 2017 are the second highest in the last 10 years (after 49 fatalities in 2015).

**Pedestrians represented about 0.5% of persons in crashes but 15% of deaths.**

## Age of Drivers in Pedestrian-Motor Vehicle Crashes (Utah 2017)

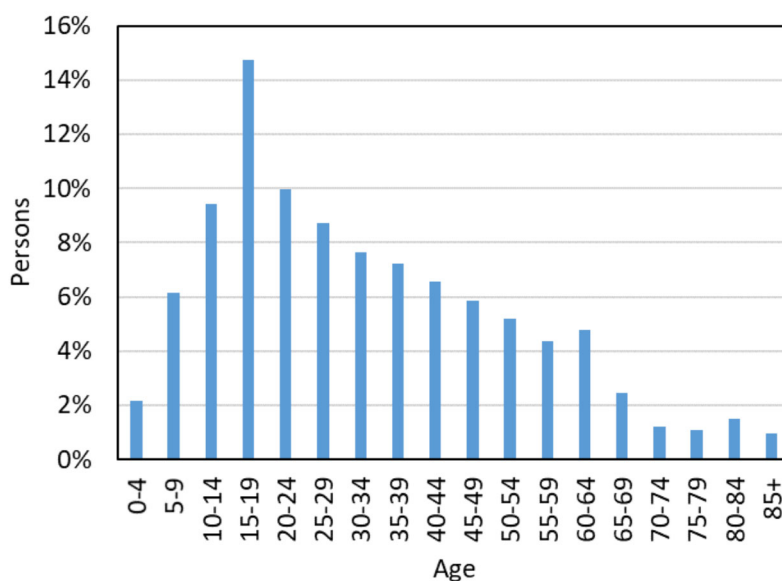


- 52% of drivers in pedestrian-motor-vehicle crashes were under 40 years old.

## Leading Contributing Factors of Drivers in Pedestrian Crashes (Utah 2017)

1. Failed to Yield the Right of Way (47%)
2. Hit and Run (17%)
3. Failed to keep in proper lane (3.2%)
4. Improper turn (3.1%)
5. Reckless/aggressive (2.2%)

## Age of Pedestrians in Pedestrian-Motor Vehicle Crashes (Utah 2017)



- 51% of the pedestrians in crashes were under 25 years old.

## Leading Contributing Factors of Pedestrians in Pedestrian Crashes (Utah 2017)

1. Improper Crossing (32%)
2. Not Visible (18%)
3. Darting (15%)

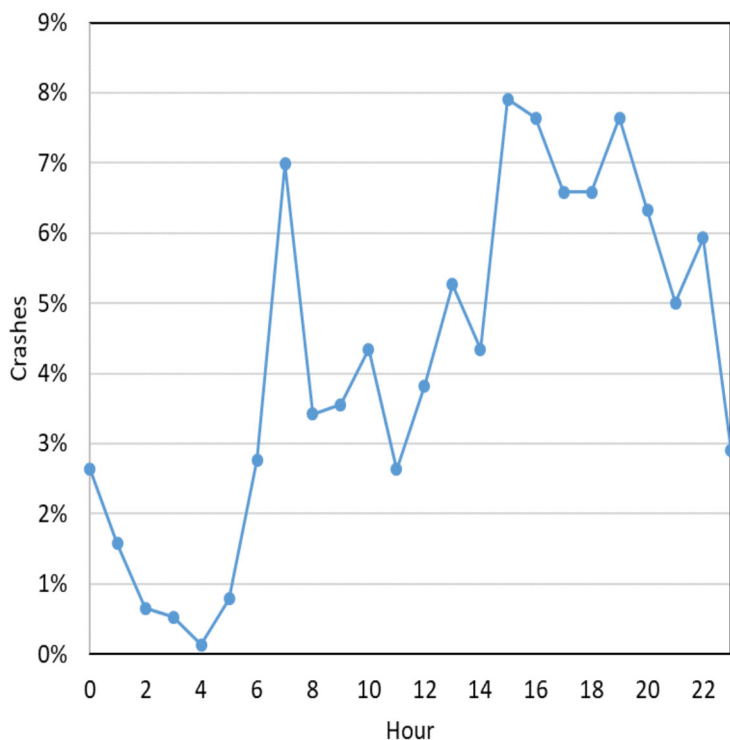
\* 49% of pedestrians had no contributing factor in the crash.

**Driver distraction was a factor in 10% of pedestrian-related crashes**

# Pedestrians

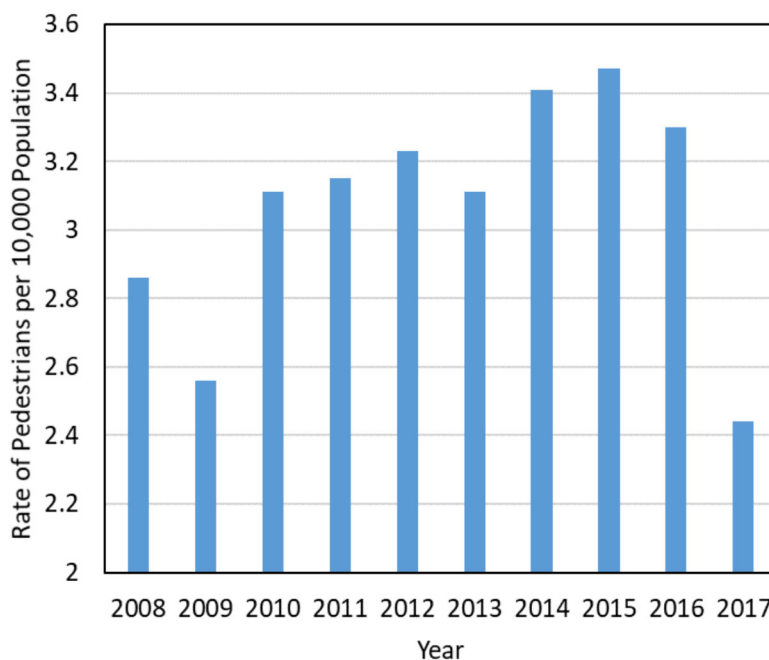


**Pedestrian-Motor Vehicle Crashes by Hour  
(Utah 2017)**



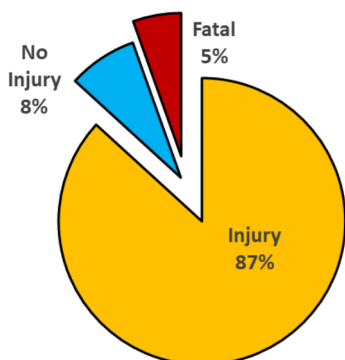
- Pedestrian-motor vehicle crashes occurred most often between 7 a.m. and 8 a.m. and between 3 p.m. and 8 p.m.

**Pedestrian Crash Rates per Population  
(Utah 2008-2017)**



- The rate of pedestrians involved in motor vehicle crashes has decreased in Utah in the last two years.

**Injury Severity of Pedestrians in Crashes  
(Utah 2017)**



**Motor Vehicle Action Prior to Crash  
(Utah 2017)**

1. Straight Ahead (53%)
2. Turning Left (19%)
3. Turning Right (18%)
4. Backing (3%)
5. Leaving the Traffic Lane

**Location of Pedestrians in Crashes  
(Utah 2017)**

1. Marked Crosswalk at Intersection (44%)
2. In Roadway (no crosswalk or intersection) (24%)
3. Sidewalk (8%)
4. Unmarked Crosswalk at Intersection (7%)
5. Midblock Crosswalk (4%)