

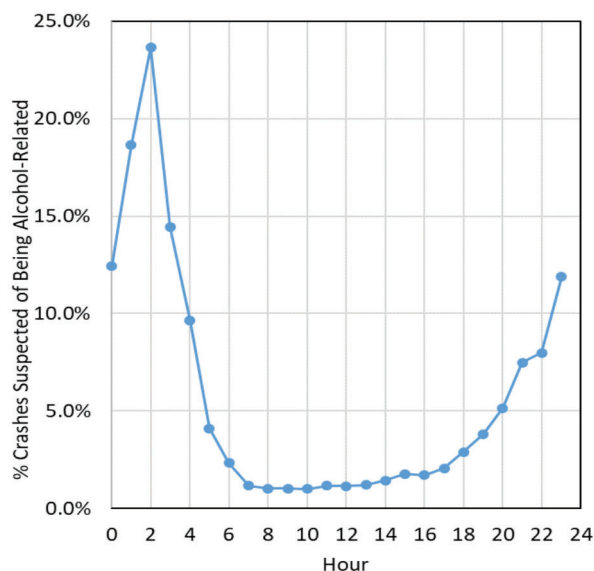
Alcohol



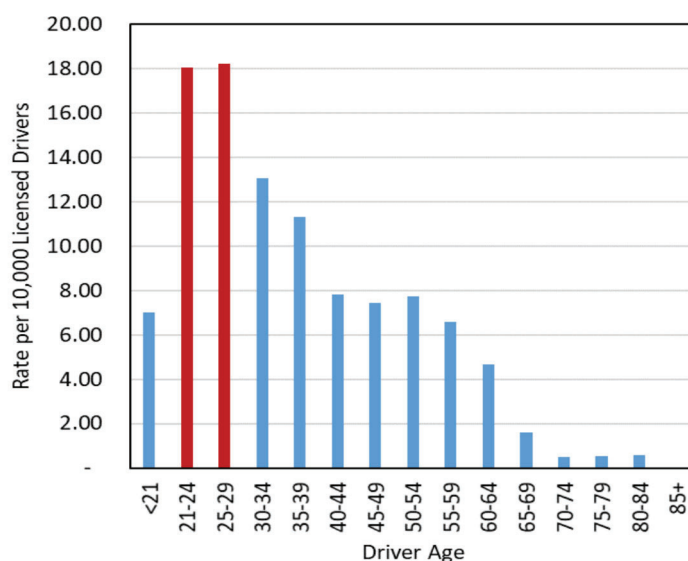
- 1,915 alcohol-related driver crashes occurred in Utah, which resulted in 1,224 injured persons and 67 deaths. Out of the 67 deaths, 51 occurred in crashes with at least one drunk driver (BAC \geq 0.08).
- 3.1% of the crashes in Utah involved an alcohol-related driver.

Alcohol-related crashes were 10.5 times more likely to be fatal than other crashes.

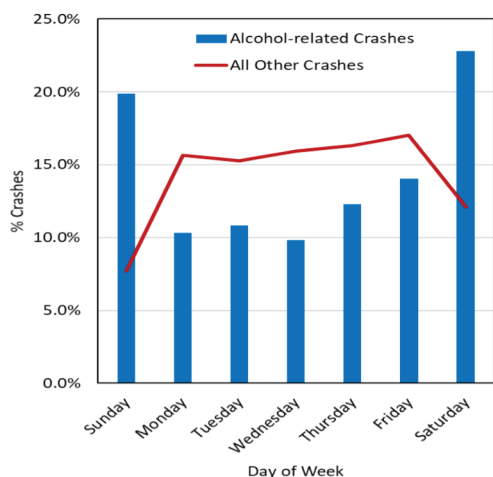
Percent of Total crashes with an Alcohol-Related Driver by Hour (Utah 2018)



Rate of Alcohol-Related Drivers in Crashes per Licensed Driver (Utah 2018)



Alcohol-Related Driver Crashes by Day of Week (Utah 2018)



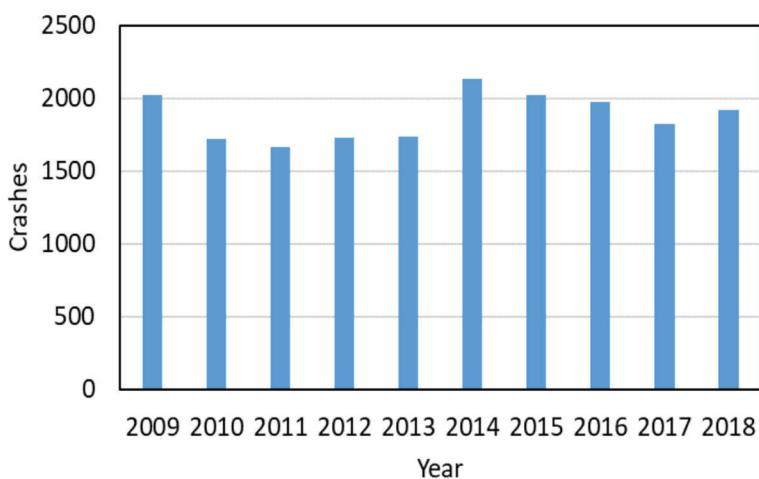
- Drivers aged 21 to 29 had the highest rates of alcohol-related crashes.
- 133 (7%) of the alcohol-related drivers in crashes were under the age of 21 years.
- While 3.1% of total crashes involved an alcohol-suspected driver, 15% of crashes occurring during the hours of 11 p.m. and 4 a.m. involved an alcohol-related driver.
- The highest percentage of alcohol-related driver crashes occurred on weekends (43%).

Note: A non-fatal crash is considered alcohol-related when at least one driver tested positive for alcohol, or if the investigating officer suspected the driver used alcohol. A drunk driver fatal crash is a crash resulting in one or more deaths involving at least one driver with a blood alcohol concentration (BAC) of .08 grams per deciliter or above.

Alcohol

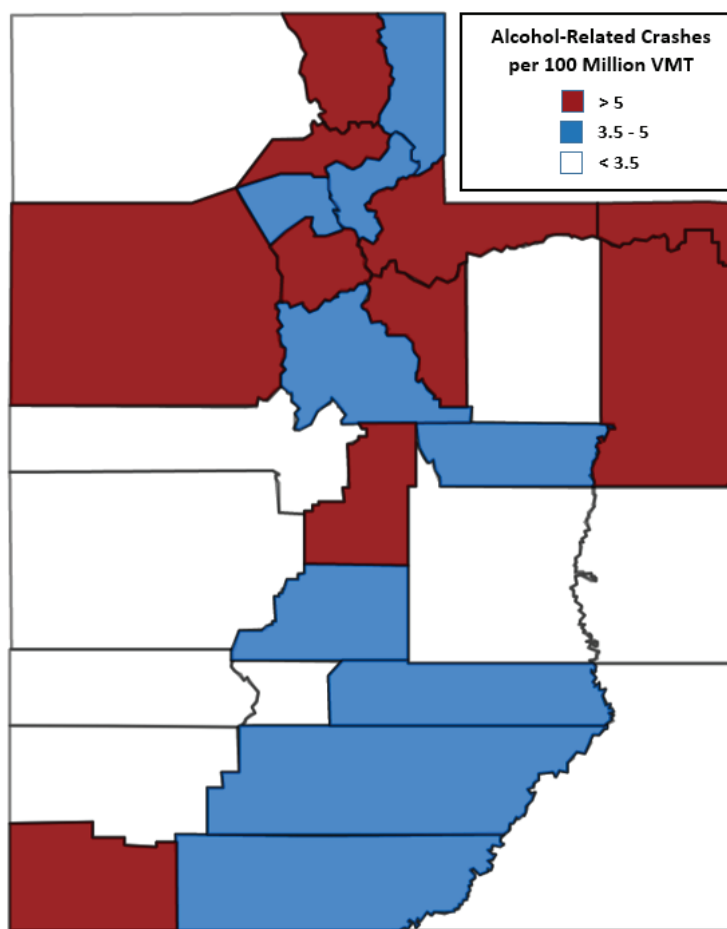


Alcohol-Related Driver Crashes (Utah 2009-2018)



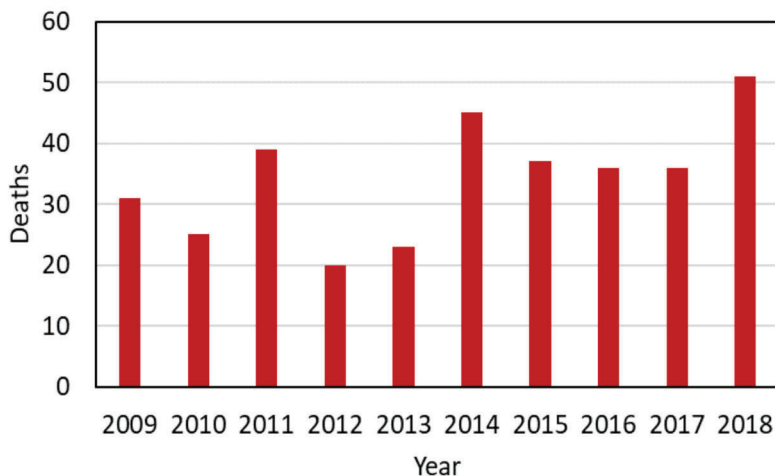
- The number of alcohol-related driver crashes increased in 2018 after a continuous decrease from 2015 to 2017.

Alcohol-Related Driver Crashes by County (Utah 2018)



- Salt Lake, Wasatch, Weber, Sanpete, and Summit counties (in that order) had the highest alcohol-related crash rates per miles traveled.
- Daggett County had the overall highest alcohol-related crash rates, but this was the result of 4 alcohol-related crashes and the lowest miles traveled.
- Beaver, San Juan, Millard, and Juab counties had the lowest rates of alcohol-related crashes (< 2 alcohol-related crashes per 100 million vehicle miles traveled)

Deaths from Drunk Drivers (BAC >=0.08) (Utah 2009-2018)



- The number of deaths from drunk drivers (BAC >= 0.08) remained increased significantly in 2018 (51 deaths) in 2018 compared to 36 in 2016 and 2017.