

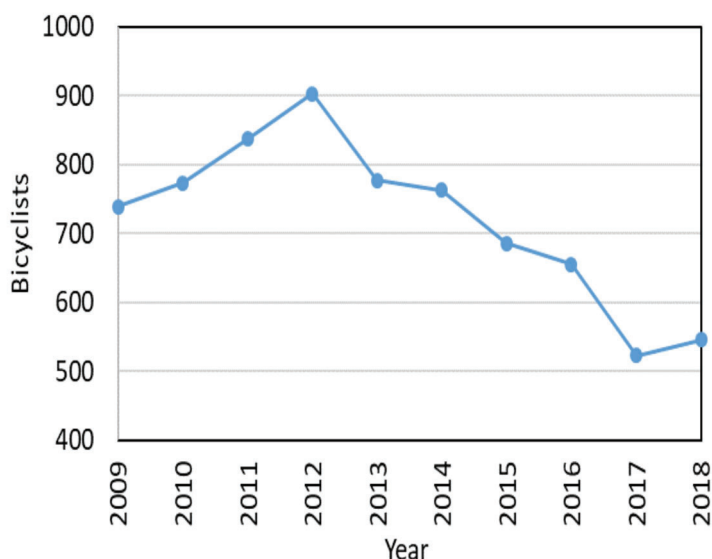
## Bicyclists



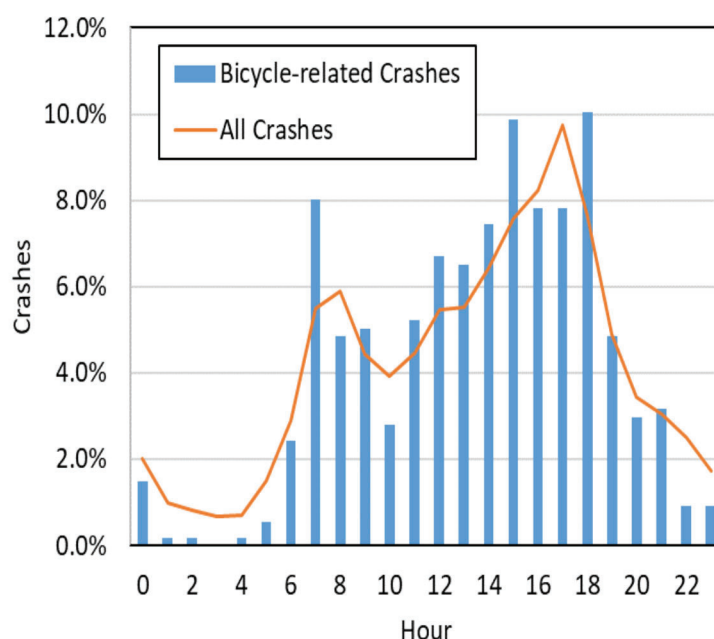
- In 2018, 537 crashes involved bicyclists in Utah, resulting in 492 bicyclists injured and 3 bicyclist deaths.

**The leading vehicle maneuver and driving contributing factor for bicycle-related crashes was a right turn and a driver not yielding the right of way, respectively.**

**Bicyclists in Motor-Vehicle Crashes  
(Utah 2018)**



**Bicycle-Motor Vehicle Crashes by Hour  
(Utah 2018)**



- The number of bicyclists in motor-vehicle crashes in Utah has a generally decreasing trend in the last six years

### Leading Contributing Factors of Drivers in Bicycle Crashes (Utah 2018)

- Failed to Yield the Right of Way (60%)
- Hit and Run (6.7%)
- Improper Turn (5.2%)
- Disregard Traffic Signals (3.1%)

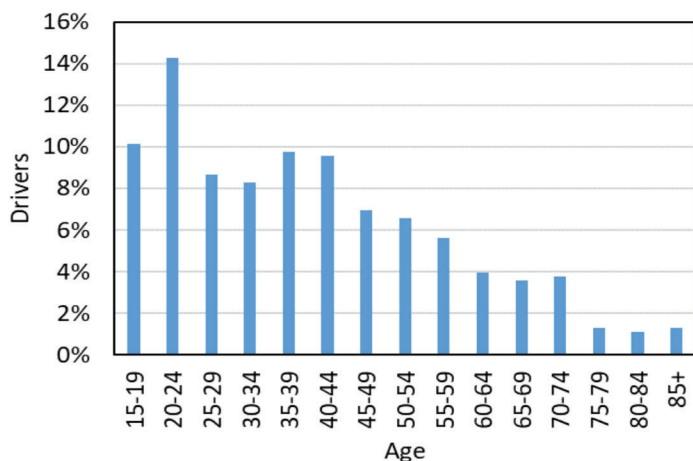
- Overall, the distribution of bicycle-related crashes by hour of the day followed a distribution similar to that of all crashes.
- However, higher proportion of bicycle crashes occurred in the morning peak (between 7 a.m. and 8 a.m.), from 3 p.m. to 4 p.m., and from 6 p.m. to 7 p.m.

**Driver distraction was a factor  
in 4% of bicycle-related crashes**

# Bicyclists



## Age of Drivers in Bicycle-Motor Vehicle Crashes (Utah 2018)



- 24% of the drivers in bicycle-related crashes were under 25 years of age. This age group represents 19% of all registered drivers.

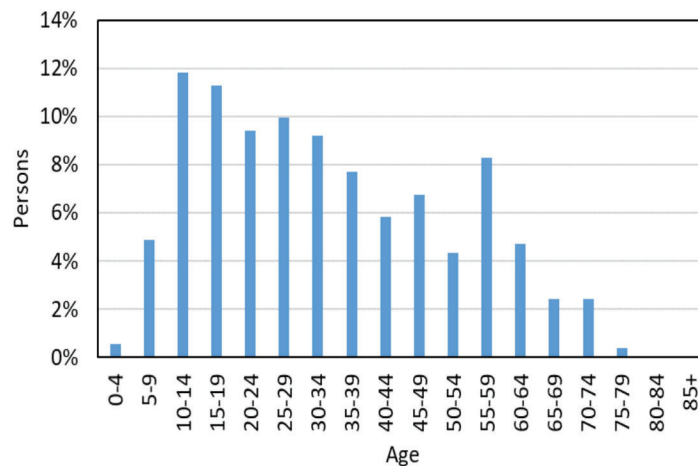
## Bicyclist Action Prior to Crash (Utah 2018)

1. Entering or Crossing Road (30%)
2. Cycling on Sidewalk (28%)
2. Cycling Along Roadway with Traffic (27%)
4. Cycling Along Roadway against Traffic (11%)
5. Other (1%)

## Motor-Vehicle Driver Action Prior to Crash (Utah 2018)

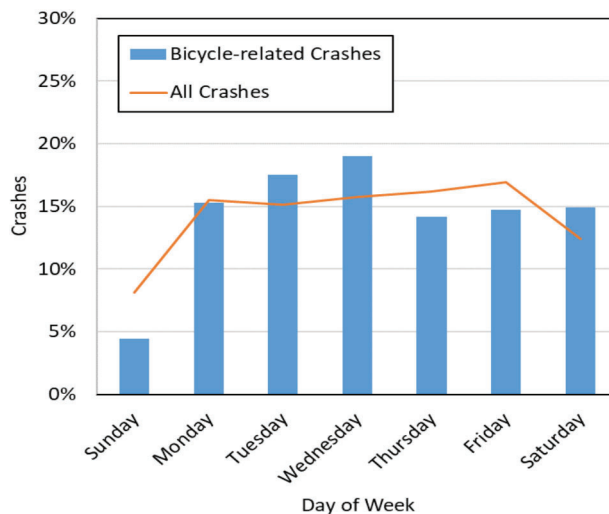
1. Turning Right (38%)
2. Straight Ahead (36%)
3. Turning Left (17%)
4. Entering Traffic Lane (1.4%)

## Age of Bicyclists in Bicycle-Motor Vehicle Crashes (Utah 2018)



- Over 48% of the bicyclists in crashes were under the age of 30, and 17% were under the age of 15.

## Bicycle-Motor Vehicle Crashes by Day of Week (Utah 2018)



- The largest proportion of bicycle-related crashes occurred on Tuesdays and Wednesdays. Sundays had the lowest proportions of crashes.