

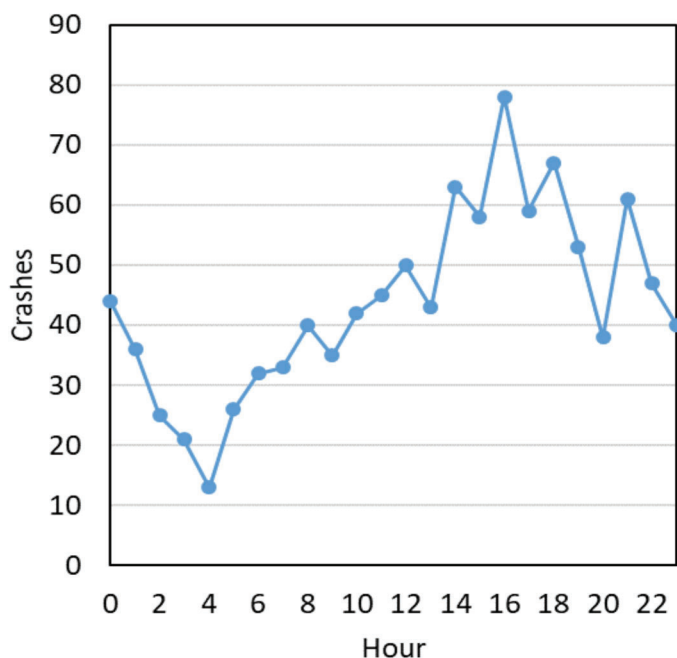
Drugs



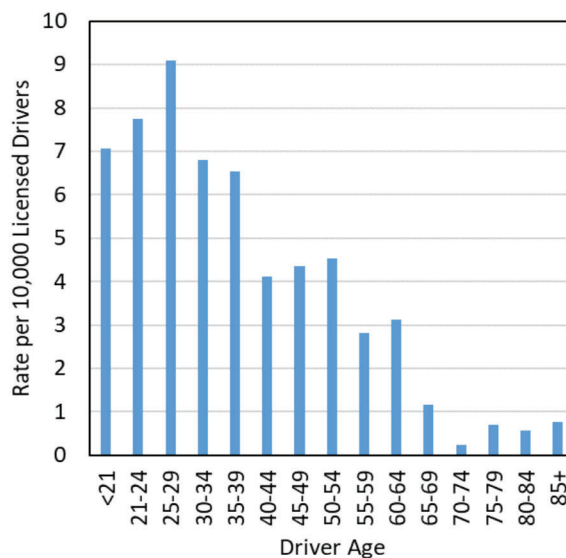
- 1,049 drug-related driver crashes occurred in Utah in 2018, which resulted in 782 injured persons and 94 deaths.
- 1.7% of the crashes in Utah involved a drug-related driver, and these crashes resulted in 36% of the deaths from motor vehicle crashes.

Drug-related crashes were 33 times more likely to be fatal than other crashes.

Drug-Related Driver Crashes by Hour (Utah 2018)



Rate of Drug-Related Drivers in Crashes per Licensed Driver (Utah 2018)



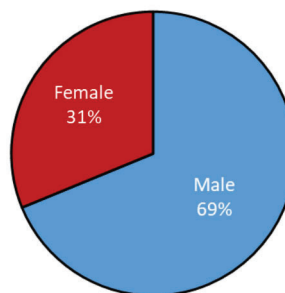
- Drivers aged 16 to 29 years had the highest rates of drug-related crashes.

- Drug-related driver crashes were the highest between the hours of 2 p.m. and 6 p.m.

Drug presence does not necessarily imply impairment. For many drug types, drug presence can be detected long after any impairment that might affect driving has passed. Also, whereas the impairment effects for various concentration levels of alcohol is well understood, little evidence is available to link concentrations of other drug types to driver performance.

Note: A non-fatal crash is considered drug-related when at least one driver had a positive drug test, or if the investigating officer suspected that the driver used drugs. A drug-positive driver fatal crash is a crash resulting in one or more deaths involving at least one driver with a positive drug test.

Drug-Related Driver Crashes by Driver Gender (Utah 2018)

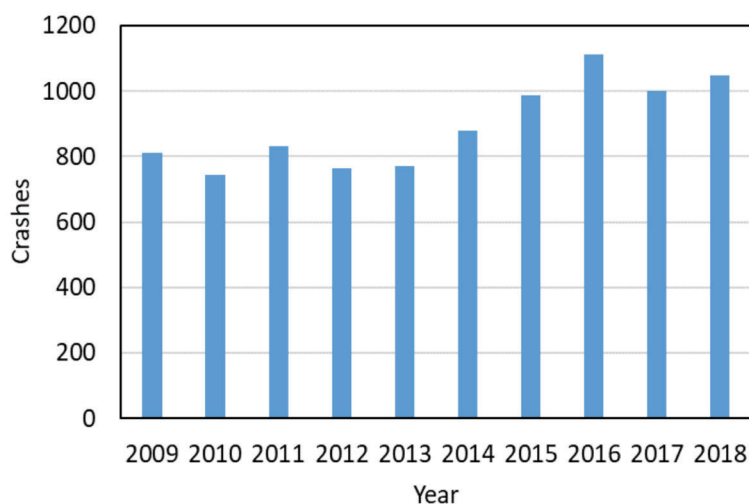


- There were over twice as many male drivers in drug-related crashes compared to female drivers.

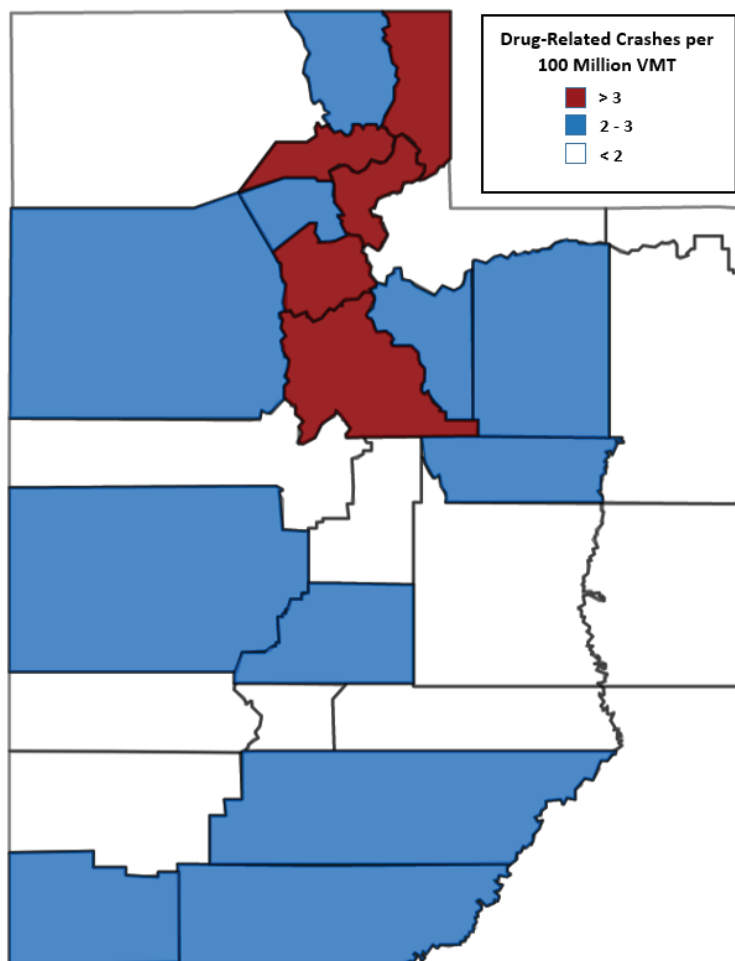
Drugs



**Drug-Related Driver Crashes by Year
(Utah 2009-2018)**

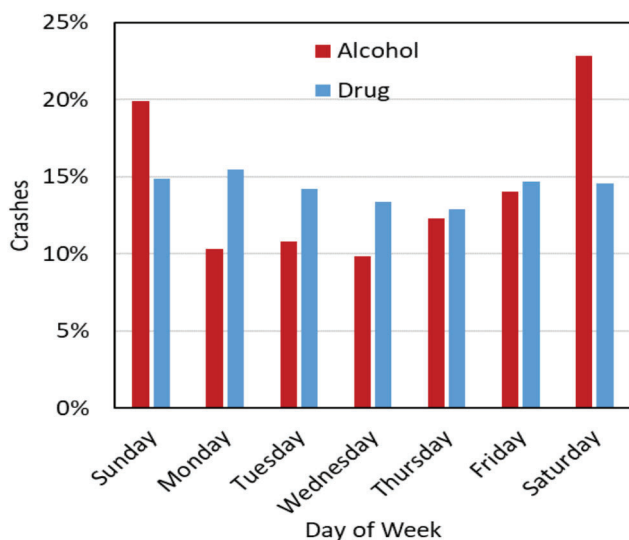


**Drug-Related Driver Crashes by County
(Utah 2018)**



- The three largest number of drug-related driver crashes in the last 10 years have occurred in the last three years

**Drug-Related vs. Alcohol-Related Driver Crashes
by Day of Week (Utah 2018)**



- Weber, Rich, Salt Lake, Morgan, and Utah counties (in that order) had the highest drug-related crash rates per miles traveled.
- The high rates in Rich and Morgan counties are the result of 3 and 6 drug-related crashes in 2018, respectively, compared to 167 and 435 in Utah and Salt Lake Counties, respectively.