

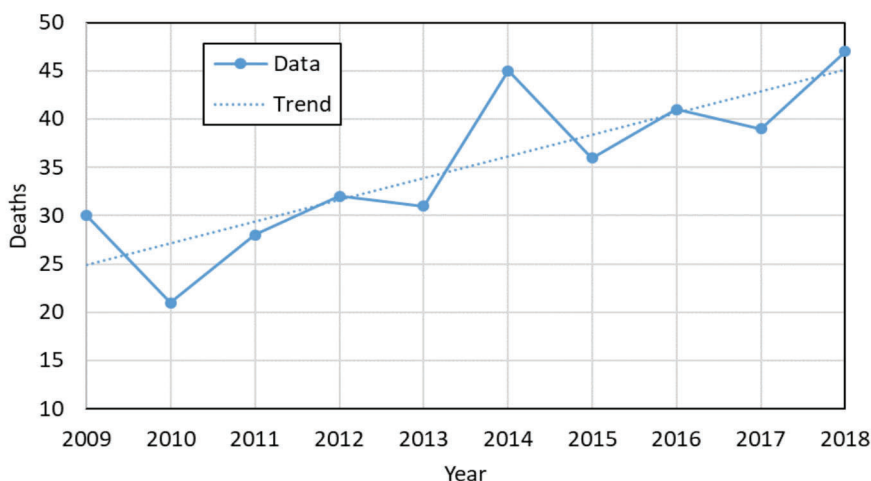
Motorcycles



- There were 1,037 motorcycle crashes in Utah, resulting in 966 injured motorcyclists and 47 motorcyclist deaths.
- Motorcyclists accounted for less than 1% of persons in crashes and 18% of deaths.

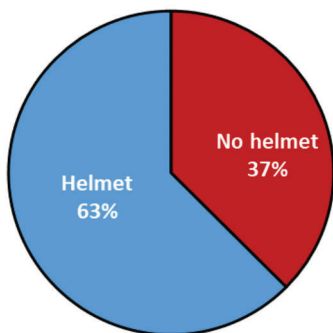
Motorcycle crashes were 13 times more likely to result in a death than other crashes.

Motorcyclist Deaths (2009-2018)



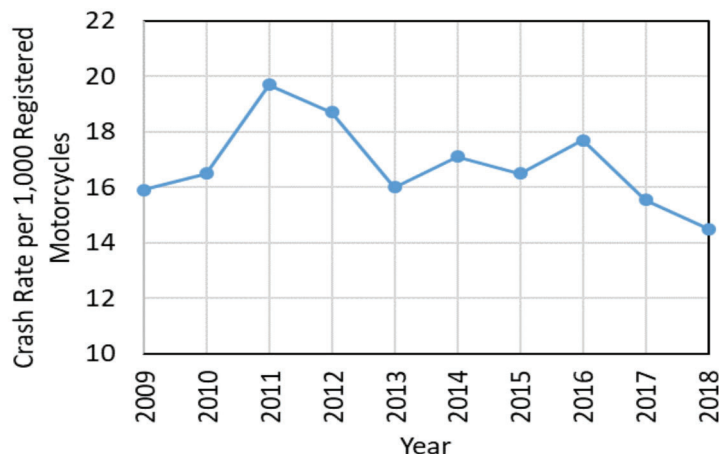
- Motorcycle deaths have been increasing in the last 10 years.
- However, motorcycle crash rates per registered motorcycles follow a neutral or downward trend in the last eight years.

Helmet Use of Motorcyclists in Crashes (Utah 2018)



- Over one third of motorcyclists in crashes did not wear a helmet.
- Motorcyclists who did not wear a helmet were 1.6 times more likely to have fatal injuries when involved in a crash compared to those who did wear a helmet.

Motorcyclist Crash Rates per Registered Motorcycles (Utah 2009-2018)

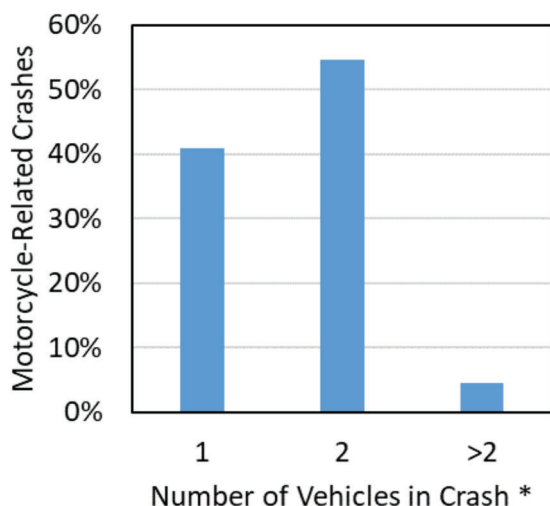


Note: Utah law requires anyone under the age of 18 years riding a motorcycle to wear a helmet.

Motorcycles



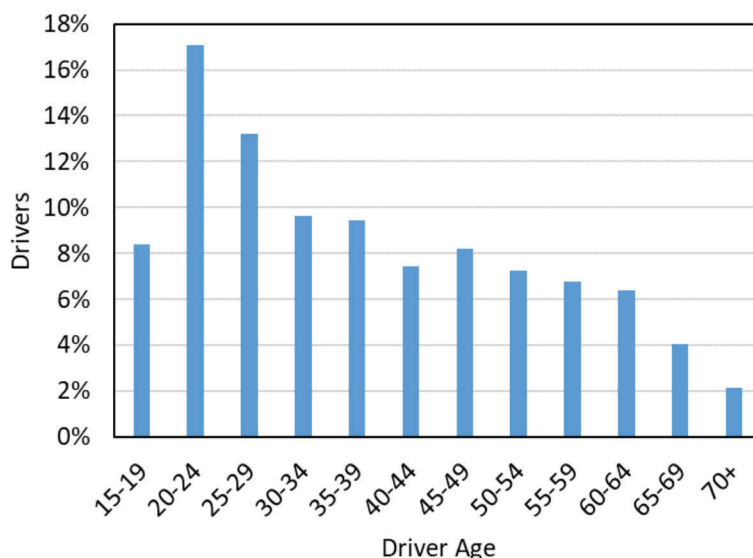
Number of Vehicles in Motorcycle-related Crashes (Utah 2018)



* Including motorcycles

- 41% of crashes involving motorcycles did not include a collision with other vehicle, and 55% included only one more motor-vehicle.

Age of Motorcycle Drivers in All Crashes (Utah 2018)



- About 30% of motorcycle drivers in crashes were between 20 and 29 years of age.

Leading Contributing Factors of Motor-Vehicle (Non-motorcycle) Drivers in Motorcycle Crashes (Utah 2018)

- Failed to Yield the Right of Way (46%)
- Followed Too Closely (10%)
- Improper Turn (9%)
- Improper lane change (7%)

* 41% of motor-vehicle (non-motorcycle) drivers had no contributing factor in the crash

Leading Contributing Factors of Motorcycle Drivers in Motorcycle Crashes (Utah 2018)

- Followed Too Closely (16%)
- Failed to keep in proper lane (14%)
- Too Fast for Conditions (14%)
- Exceeded Posted Speed Limit (8%)

* 45% of motorcycle drivers had no contributing factor in the crash

Manner of Collision of Motorcycle-Related Crashes with Two or More Vehicles (Utah 2018)

- Angle (41%)
- Front to Rear (31%)
- Sideswipe Same Direction (11%)

The leading contributing factor of drivers in collisions with motorcycles was failing to yield the right of way. The most common manner of collision was angle (a turning maneuver).