

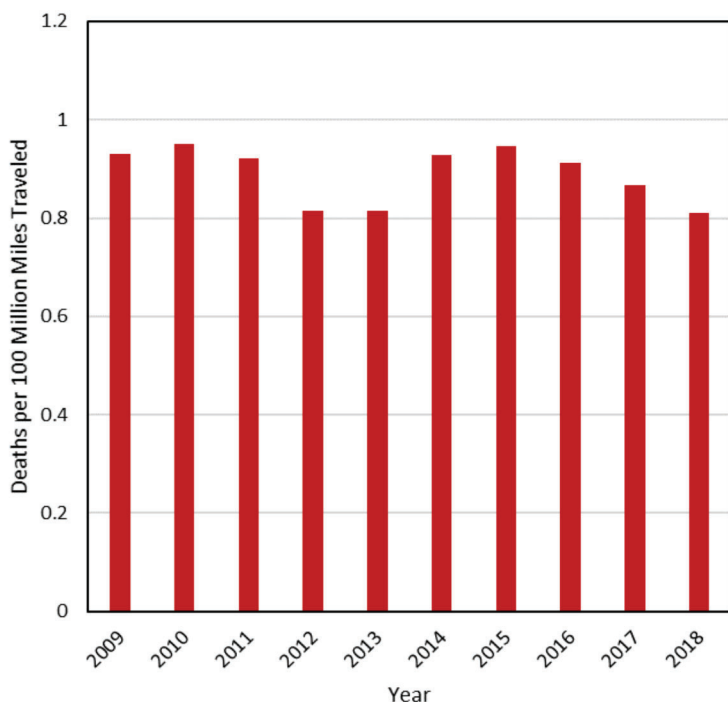
Overview



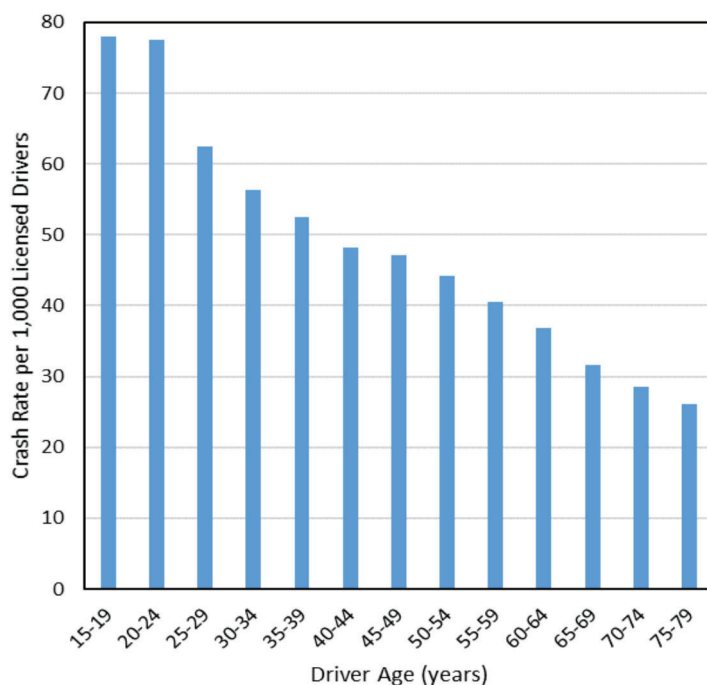
In 2018:

- 62,074 motor vehicle crashes occurred in Utah, including 237 fatal crashes, which resulted in 25,645 injured persons and 260 deaths.
- On average, a motor vehicle crash occurred in Utah every 8.5 minutes, a person was injured in a crash every 20.5 minutes, and a person died in a crash every 33.7 hours.

**Deaths per 100 Million Miles Traveled by Year
(Utah 2009-2018)**



**Crash Rates per Licensed Drivers by Age
(Utah 2018)**



- Traffic deaths per vehicle miles traveled have decreased in the last 3 years, to levels equivalent to those in 2012-2013.

- Drivers age 15-24 years had the highest crash rates per licensed driver.

Driver Contributing Circumstances* for All Crashes in 2018 (% of all crashes)

1. Followed too Closely (21%)
2. Failed to Yield the Right-of-Way (17%)
3. Speed (11%)
4. Failed to Keep in Proper Lane (9%)
5. Improper Lane Change (4%)

Driver distraction was a factor in 8.9% of all crashes

Driver Contributing Circumstances* for Fatal Crashes in 2018 (% of fatal crashes)

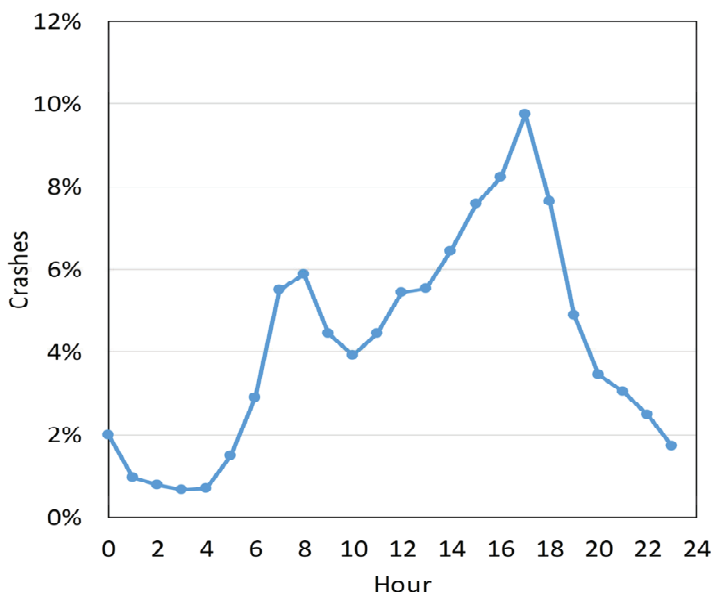
1. Failed to keep in proper lane (21%)
2. Speed (20%)
3. Failed to Yield the Right-of-Way (9%)
4. Ran Off Road (6%)
5. Disregard Traffic Signals (4%)

* Based on data from driver of vehicle number 1

Overview

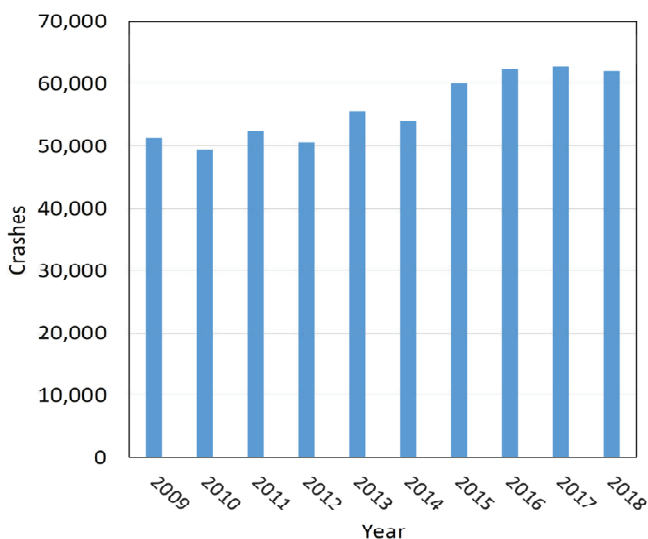


Motor Vehicle Crashes by Hour (Utah 2018)



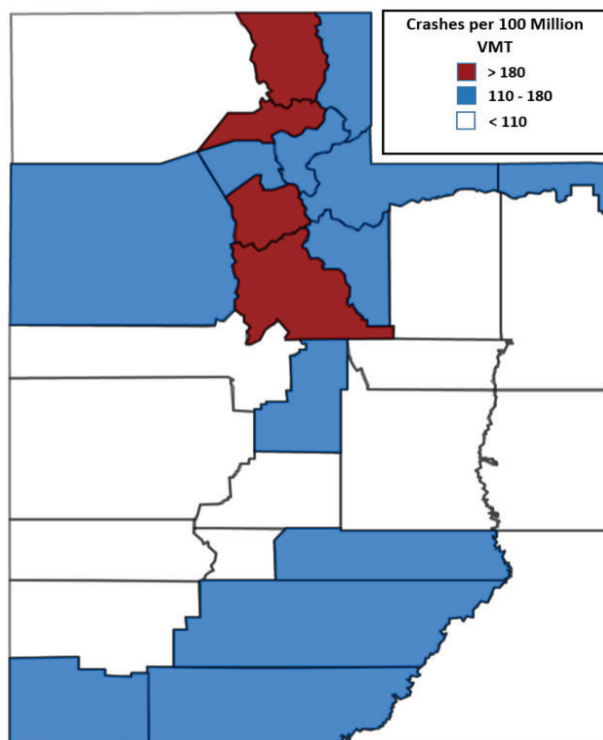
- Crashes were the highest between 3:00 p.m. and 7 p.m.

Traffic Crashes by Year (Utah 2009-2018)



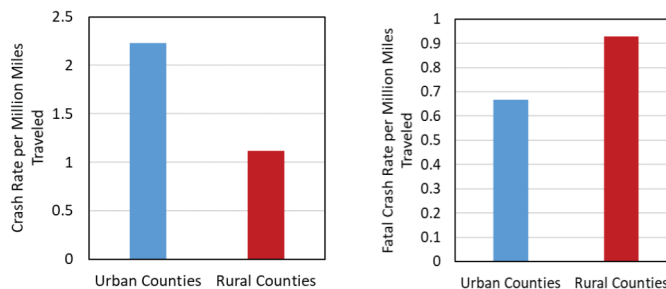
- The total number of crashes remained at similar levels in the last three years, between 2016 and 2018.

County Crash Rates by Miles Traveled (Utah 2018)



- Salt Lake, Weber, Cache and Utah counties (in that order) had the highest crash rates per miles traveled.

Urban/Rural Location (Utah 2018)



- Urban areas had a higher rate of total crashes per miles traveled, while rural areas had a higher fatal crash rate.
- Rural crashes were 2.8 times more likely to be fatal than urban crashes.