

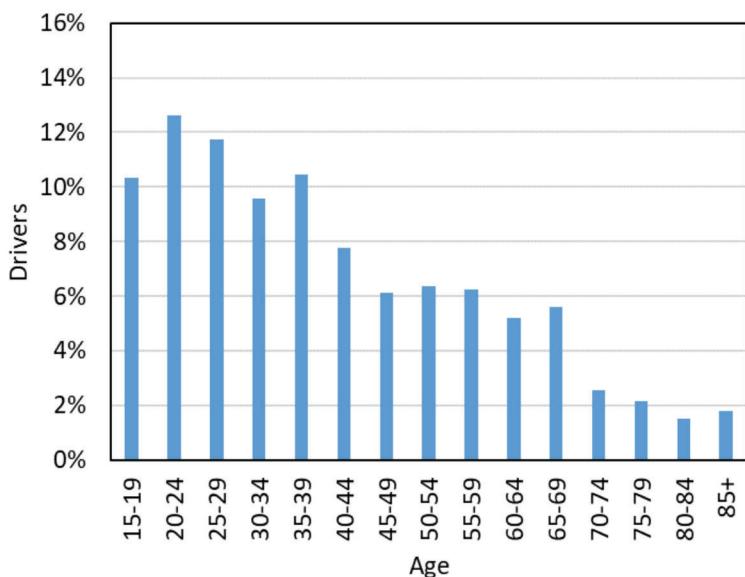
Pedestrians



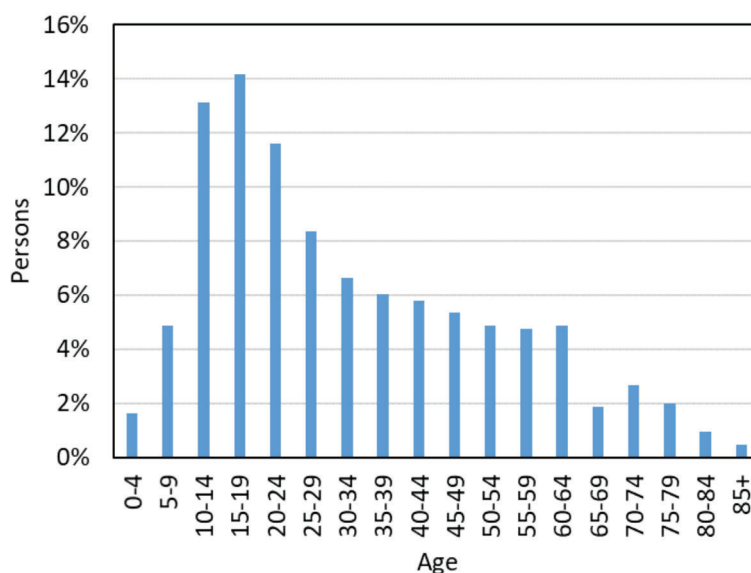
- In 2018, 830 motor vehicle crashes involved pedestrians; 811 people were injured in those crashes and 38 were killed (37 pedestrians)
- The 37 pedestrian fatalities in 2018 are lower than those in the previous year (43 pedestrian fatalities), but does not yet indicate a clear downward trend when analyzing the past 5 years.

Pedestrians represented about 0.6% of persons in crashes but 14% of deaths.

Age of Drivers in Pedestrian-Motor Vehicle Crashes (Utah 2018)



Age of Pedestrians in Pedestrian-Motor Vehicle Crashes (Utah 2018)



- 55% of drivers in pedestrian-motor-vehicle crashes were under 40 years old.

- 45% of the pedestrians in crashes were under 25 years old.

Leading Contributing Factors of Drivers in Pedestrian Crashes (Utah 2018)

- Failed to Yield the Right of Way (48%)
- Hit and Run (13%)
- Failed to Keep in Proper Lane (5%)
- Too Fast for Conditions (4%)
- * Other (10%)

Leading Contributing Factors of Pedestrians in Pedestrian Crashes (Utah 2018)

- Improper Crossing (34%)
- Darting (18%)
- Not Visible (11%)
- In Roadway Improperly (9%)

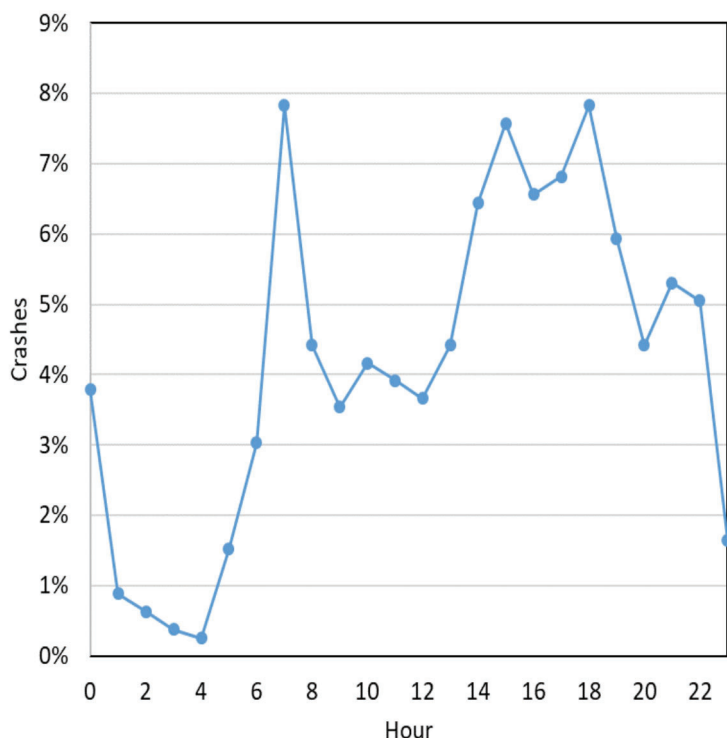
* 51% of pedestrians had no contributing factor in the crash.

Driver distraction was a factor in 7% of pedestrian-related crashes

Pedestrians

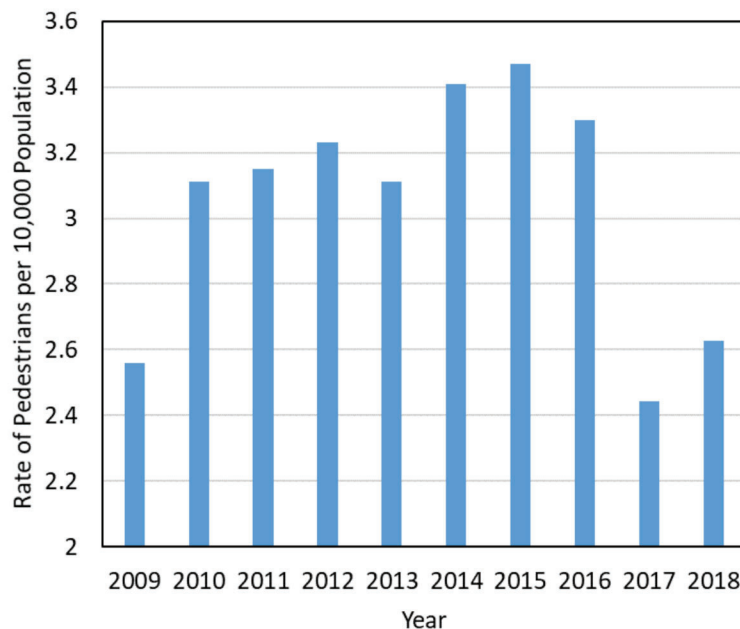


**Pedestrian-Motor Vehicle Crashes by Hour
(Utah 2018)**



- Pedestrian-motor vehicle crashes occurred most often between 7 a.m. and 8 a.m. and between 3 p.m. and 7 p.m.

**Pedestrian Crash Rates per Population
(Utah 2009-2018)**



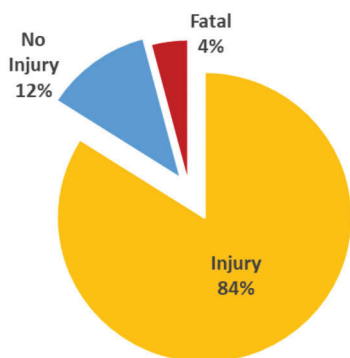
- The rate of pedestrians involved in motor vehicle crashes is at lower levels than in the last 8 years, except for 2017

**Motor Vehicle* Action Prior to Crash
(Utah 2018)**

1. Straight Ahead (50%)
2. Turning Right (20%)
3. Turning Left (19%)
4. Backing (3%)
5. Leaving the Traffic Lane (3%)

* Only actions of vehicle number 1

**Injury Severity of Pedestrians in Crashes
(Utah 2018)**



**Location of Pedestrians in Crashes
(Utah 2018)**

1. Marked Crosswalk at Intersection (43%)
2. In Roadway (no crosswalk or intersection) (22%)
4. Unmarked Crosswalk at Intersection (9%)
3. Sidewalk (5%)
5. Midblock Crosswalk (5%)