



**UTAH  
DEPARTMENT OF  
PUBLIC SAFETY  
HIGHWAY SAFETY  
OFFICE**

# **UTAH CRASH FACTS -2021-**

**4501 S 2700 W  
BLD #3, 2ND FLOOR  
TAYLORSVILLE, UT 84129**

**(801) 965-4400  
[HIGHWAYSAFETY.UTAH.GOV](https://highwaysafety.utah.gov)**



**JESS L. ANDERSON, COMMISSIONER**  
UTAH DEPARTMENT OF PUBLIC SAFETY

**CARRIE SILCOX, DIRECTOR**  
UTAH HIGHWAY SAFETY OFFICE

**BARBRA FREEMAN, TRAFFIC RECORDS MANAGER**  
UTAH HIGHWAY SAFETY OFFICE

**BRIANA BITNER, FARS ANALYST**  
UTAH HIGHWAY SAFETY OFFICE

# 2021 CRASH FACTS

**61,406**  
CRASHES

**26,437**  
INJURIES

**332**  
FATALITIES

*a year's overview*

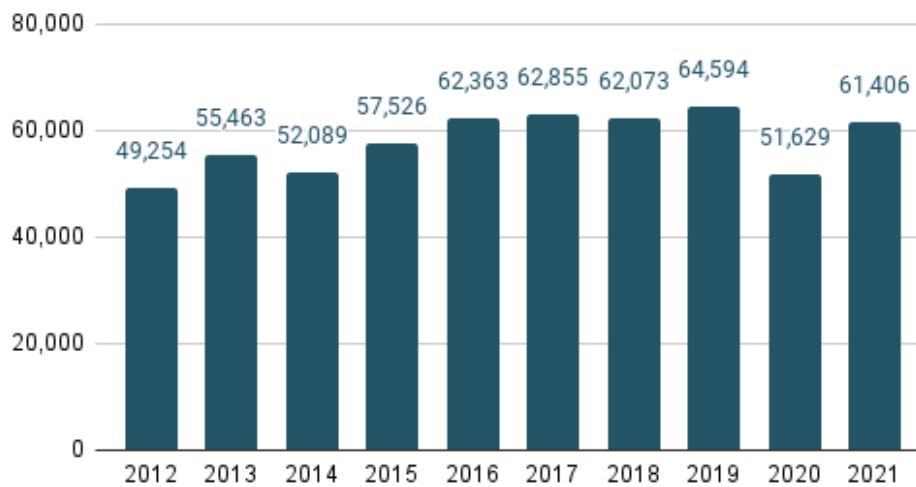
# WHERE WE ARE NOW

## IN 2021....

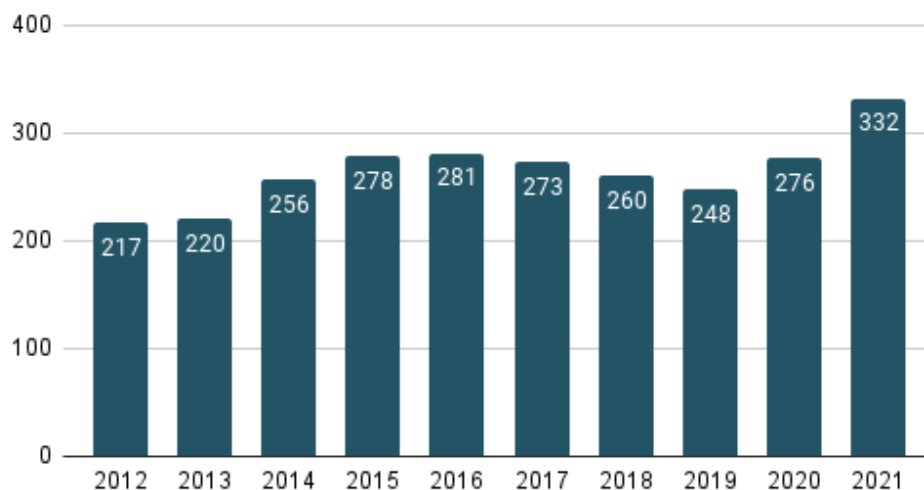
- A CRASH OCCURRED EVERY 8.5 MINUTES.
- A PERSON WAS INJURED IN A CRASH EVERY 20 MINUTES
- A PERSON DIED IN A CRASH EVERY 26 HOURS.

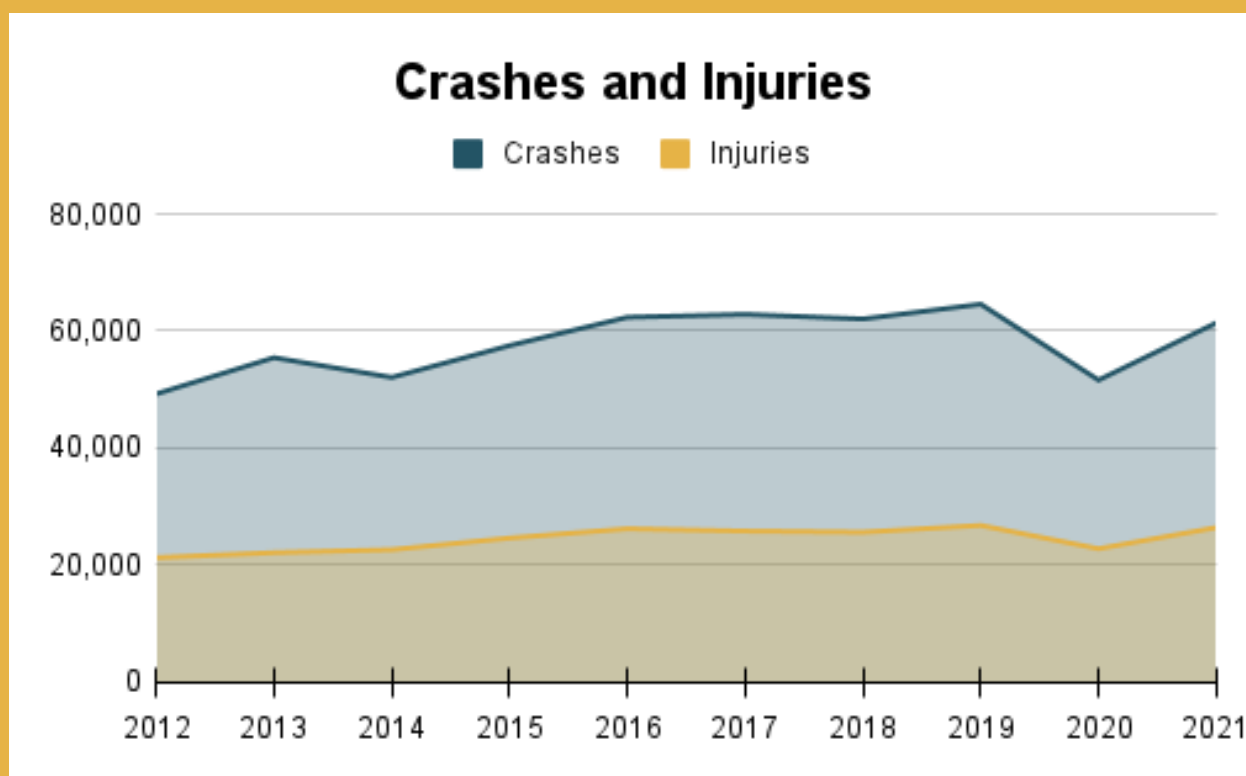


### Crashes

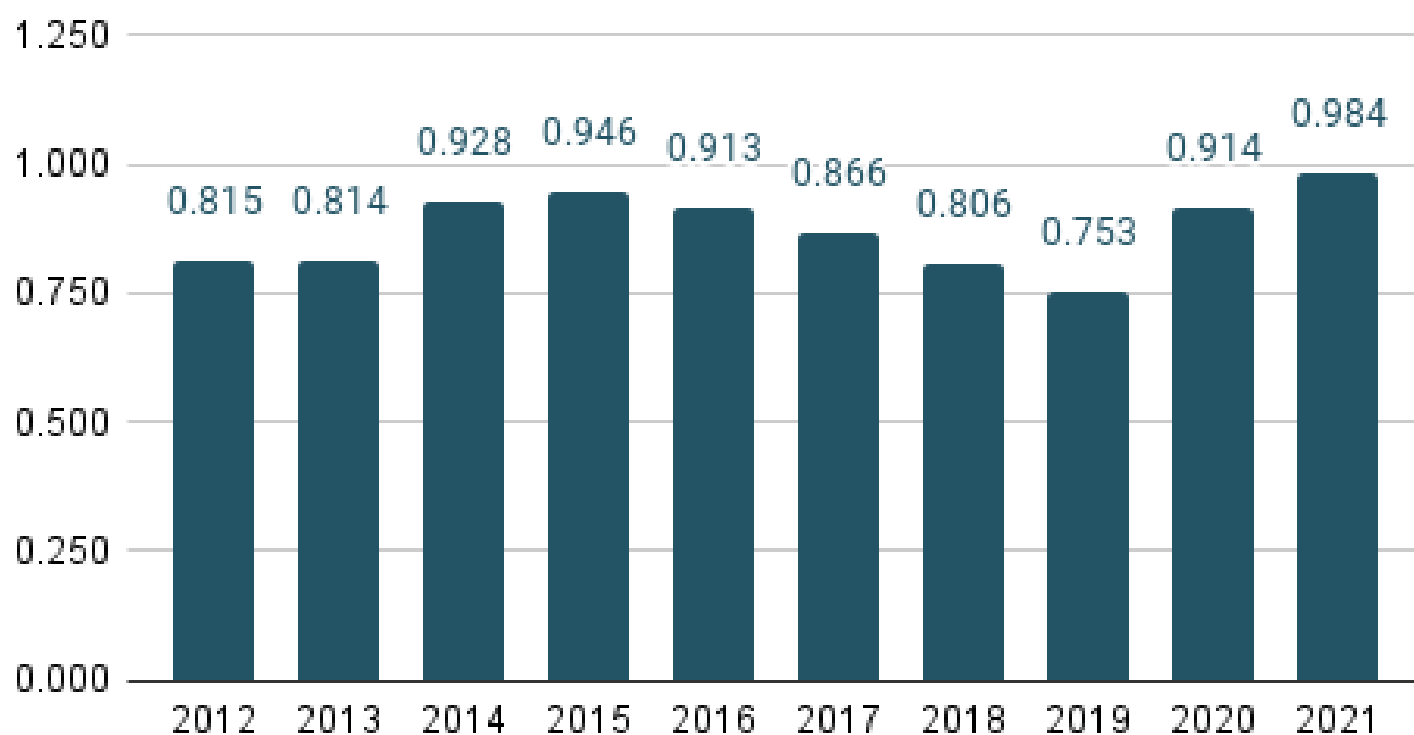


### Fatalities





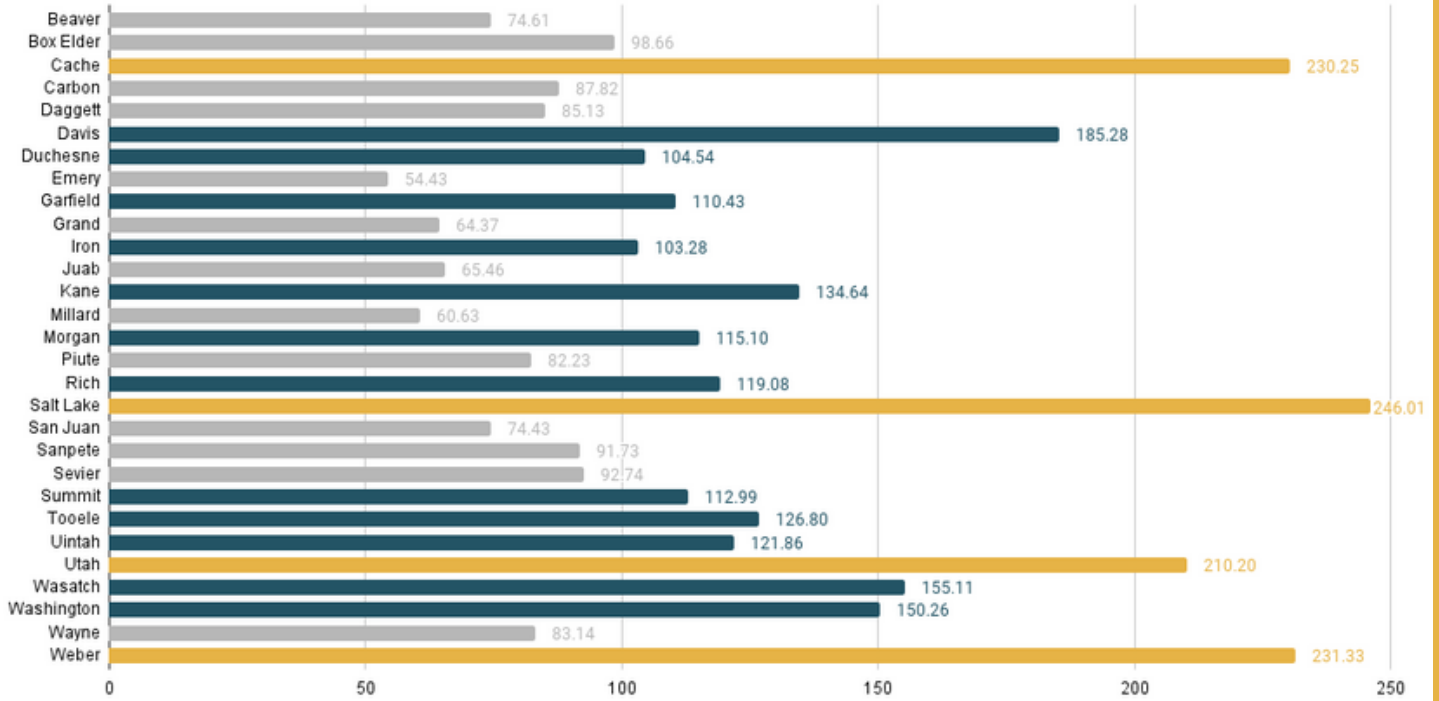
## Deaths per 100 Million Vehicle Miles Traveled



**TRAFFIC DEATHS PER VEHICLE MILES TRAVELED  
INCREASED TO LEVELS NOT SEEN IN OVER 10 YEARS.**

# WHERE?

2021 County Crash Rates Per 100 Million Vehicle Miles Traveled



## COUNTIES WITH THE HIGHEST CRASH RATES

-PER 100 MILLION-  
-VEHICLE MILES TRAVELED-

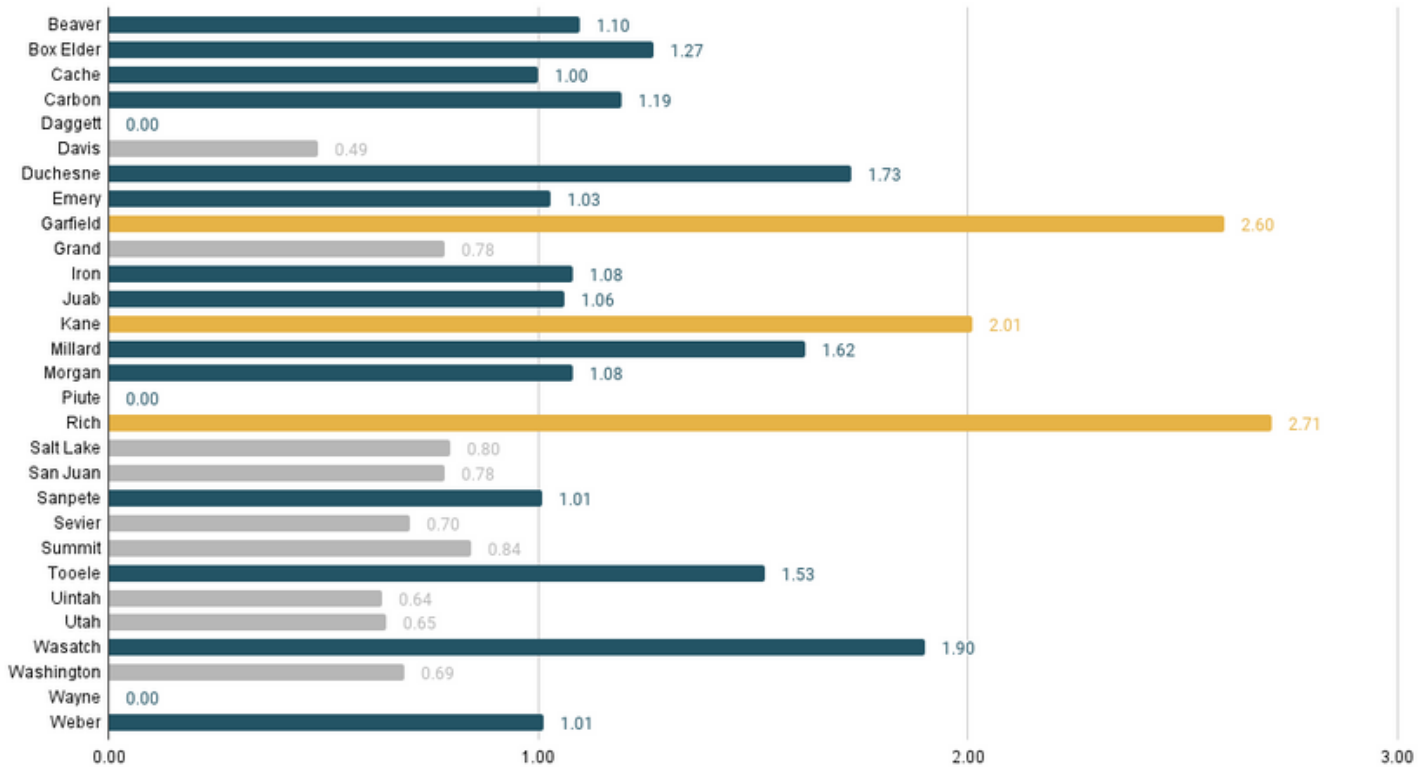
1. SALT LAKE
2. WEBER
3. CACHE
4. UTAH
5. DAVIS

### Legend

- > 200
- 100 - 199
- 0 - 99

# WHERE?

2021 Fatal County Crash Rates Per 100 Million Vehicle Miles Traveled

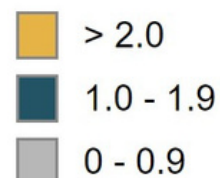


## COUNTIES WITH THE HIGHEST FATAL CRASH RATES

— PER 100 MILLION —  
— VEHICLE MILES TRAVELED —

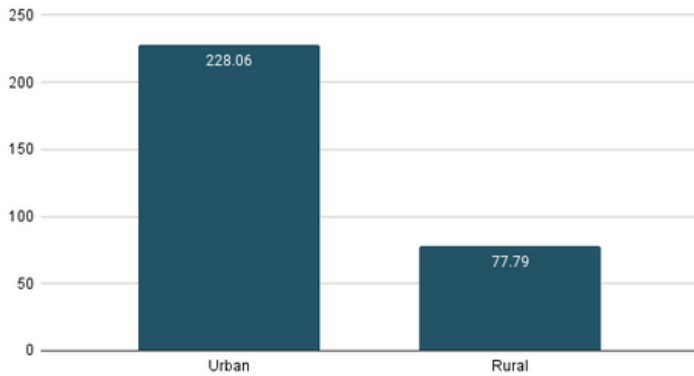
1. RICH
2. GARFIELD
3. KANE
4. WASATCH
5. DUCHESNE

### Legend

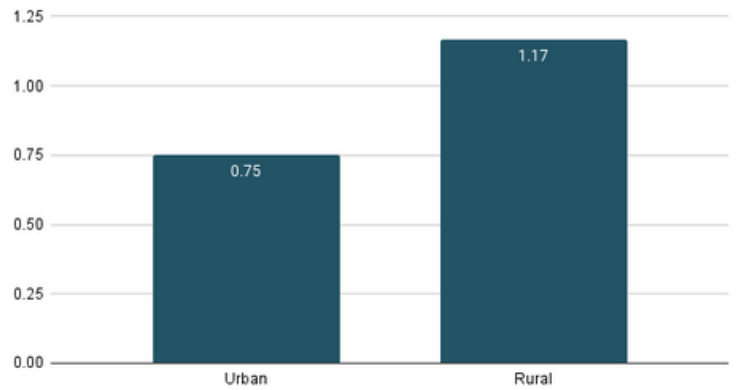


# WHERE?

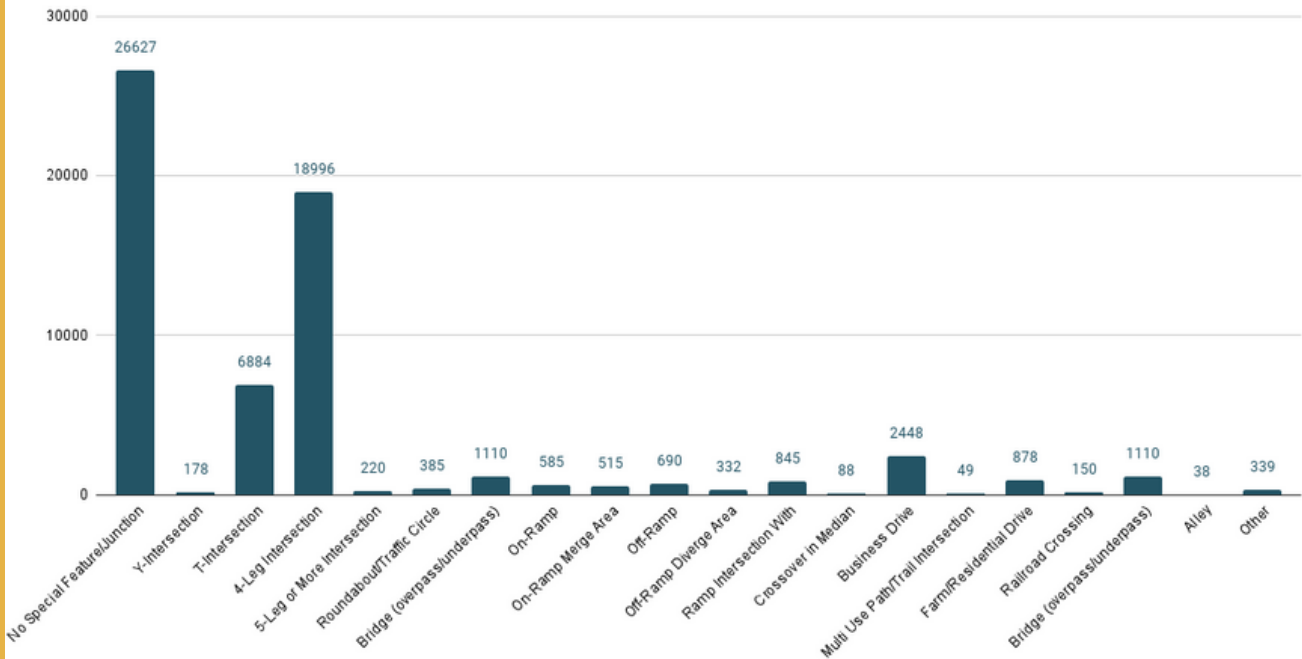
2021 Crash Rate Per 100 Million Vehicle Miles Traveled



2021 Fatal Crash Rate Per 100 Million Vehicle Miles Traveled



2021 Crashes by Roadway Junction/Feature



45%

of crashes occurred at an intersection

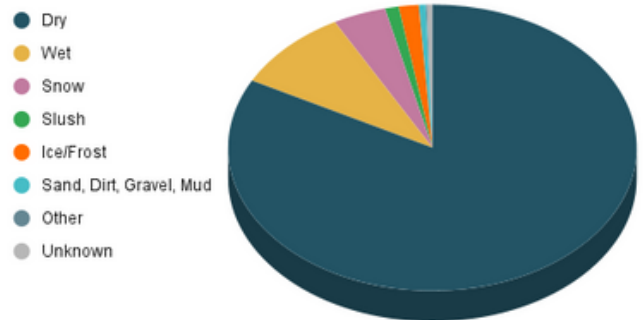


83%

of crashes occurred on dry roads

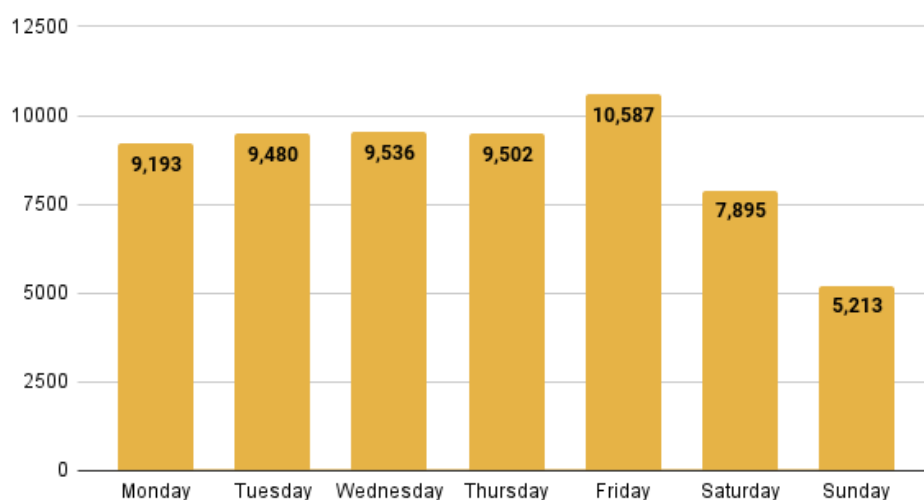


2021 Crashes by Roadway Surface Condition

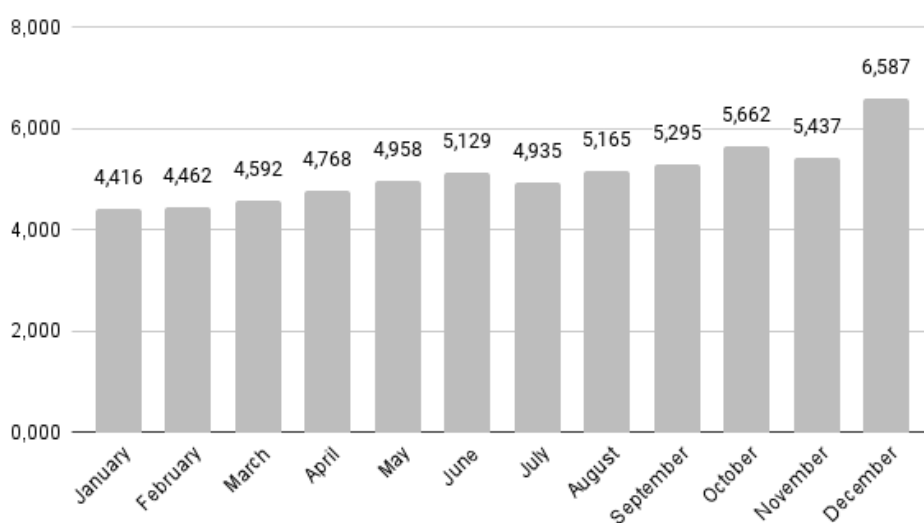


# WHEN?

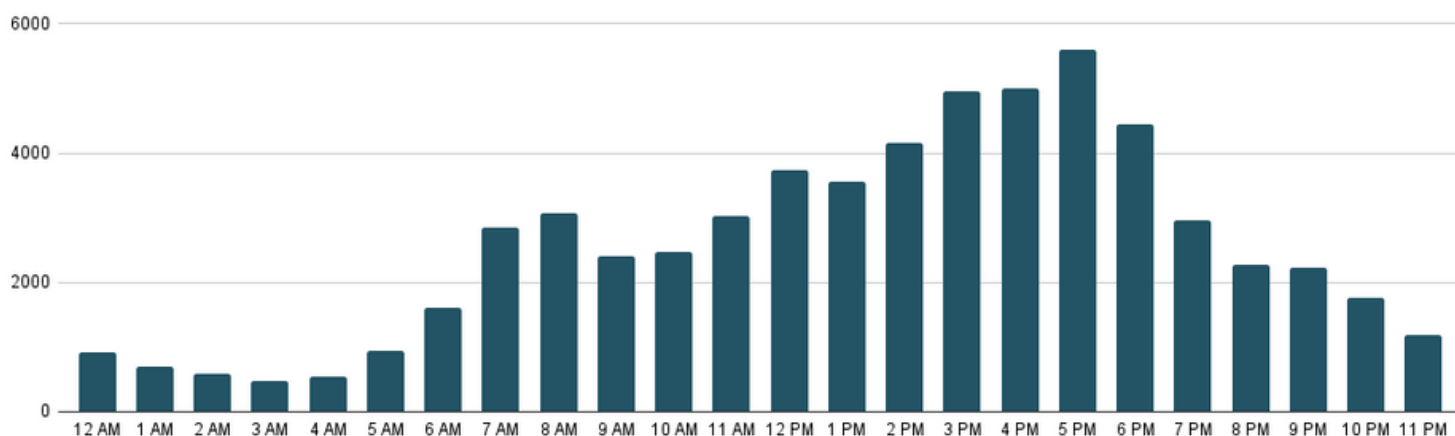
## 2021 Crashes by Day of Week



## 2021 Crashes by Month



## 2021 Crashes by Time of Day



# WHY?

## DRIVER CONTRIBUTING CIRCUMSTANCES –ALL CRASHES–

1. Followed too Closely (21%)
2. Failed to Yield Right-of-Way (20%)
3. Failed to Keep in Proper Lane (13%)
4. Speeding (8%)
5. Unsafe Lane Change (5%)

## DRIVER CONTRIBUTING CIRCUMSTANCES –FATAL CRASHES–

1. Speeding (31%)
2. Failed to Keep in Proper Lane (30%)
3. Failed to Yield Right-of-Way (14%)
4. Ran Off Road (12%)
5. Over-Correcting (11%)

## Unrestrained Occupants in Crashes

**2,140**

Unrestrained  
Occupants

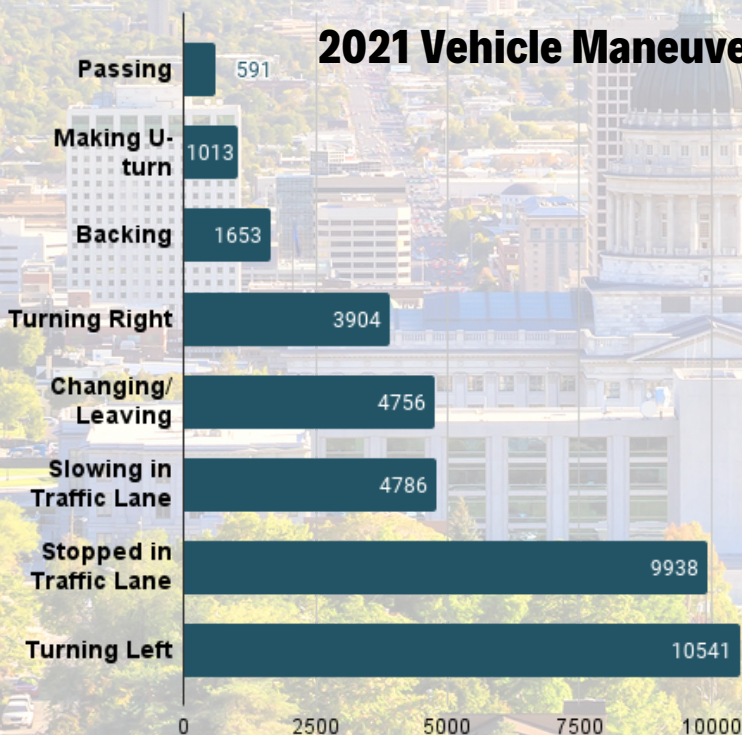
**844**

Injured  
Unrestrained  
Occupants

**94**

Unrestrained  
Children  
(age 0–12)

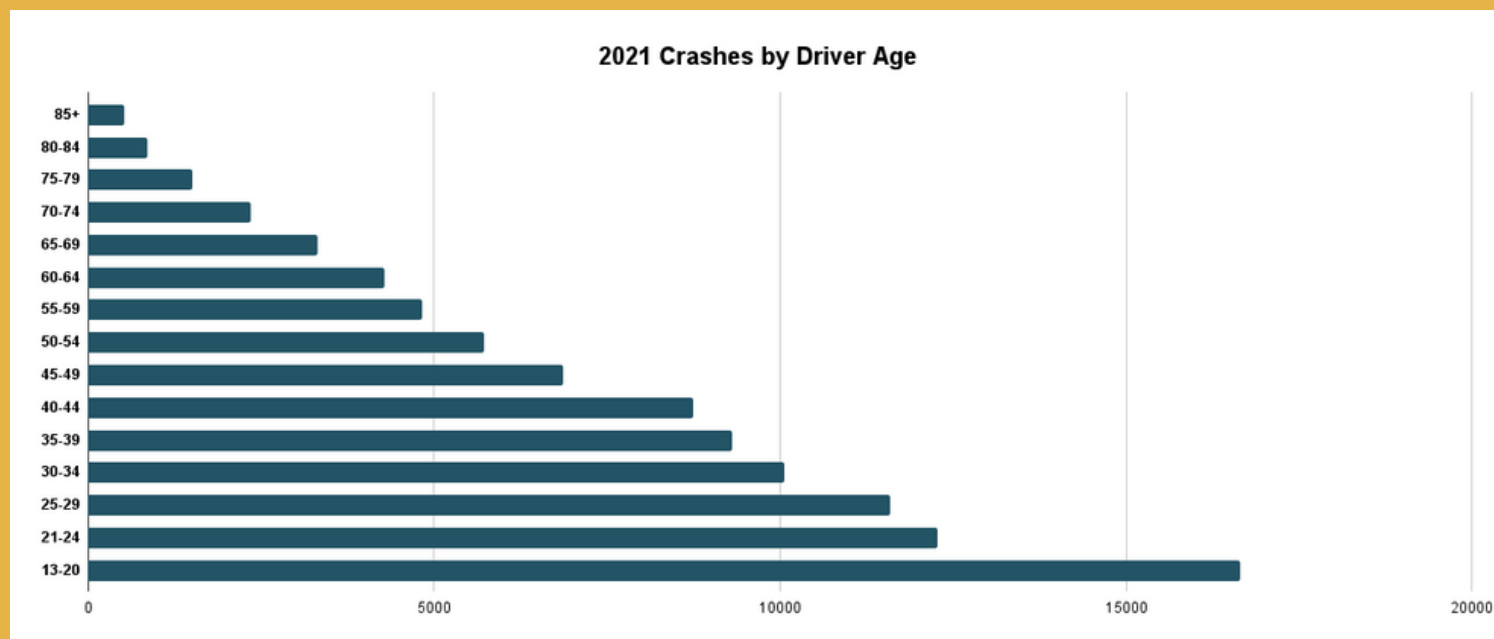
## 2021 Vehicle Maneuver



## Top 12 First Harmful Events



# WHO?



**Teenage Drivers account for 35% of Total Crashes, which is higher than any other age group.**

People Involved in Crashes in 2021	
Drivers	60,617
Passengers	18,255
Motorcycle Drivers	1,144
Motorcycle Passengers	83
Pedestrians	782
Bicyclists	476
Scooter/Skater	66

# 2021 FATALITIES

Driver	169	51%
Passenger	72	22%
Pedestrian	45	13%
Motorcyclist	40	12%
Bicyclist	6	2%

## Fatalities by Gender

**69%**

*MALE*



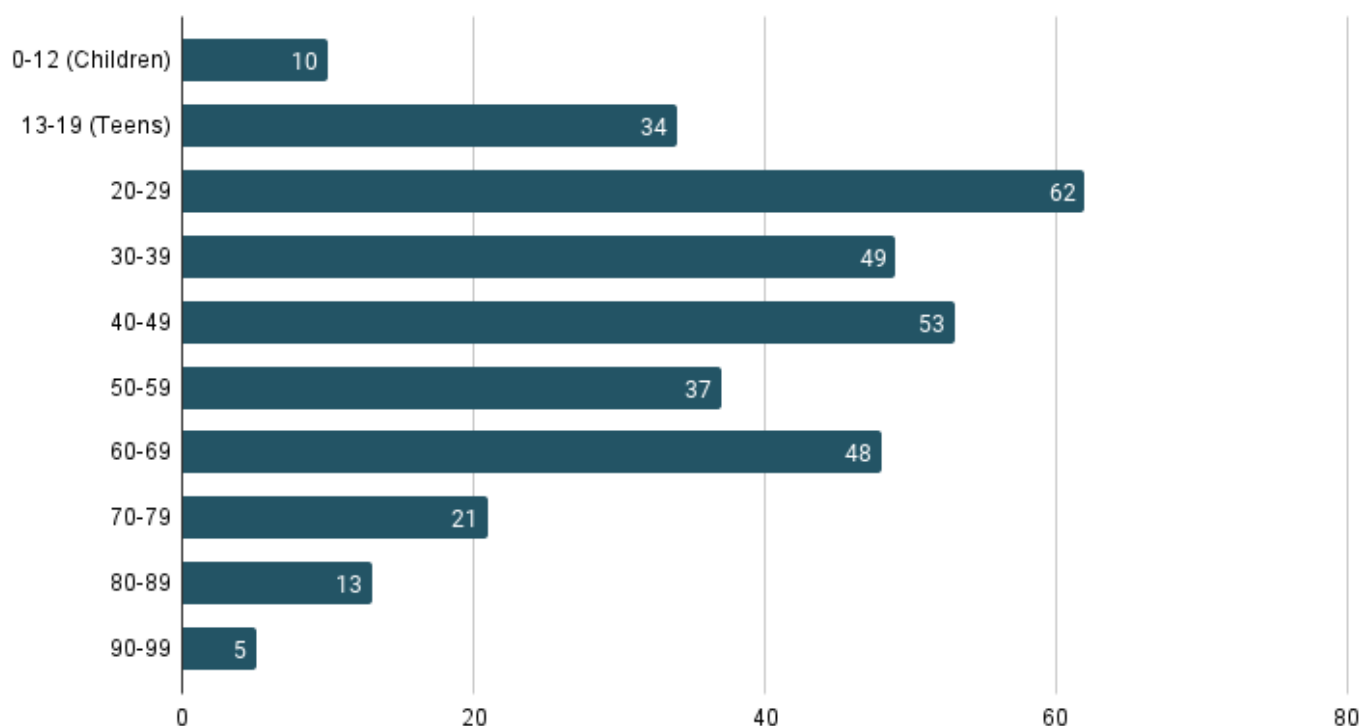
**31%**

*FEMALE*



# FATALITIES

## 2021 Fatalities by Age



In 2021...

**8%**

of deaths involved  
**Aggressive  
Driving**

**4%**

of deaths involved  
**Drowsy Driving**

**33%**

of deaths were  
**Speed Related**

**3%**

of deaths involved  
**Distracted  
Driving**

**25%**

of occupant  
deaths were  
**Unrestrained**