

Statewide Fatalities

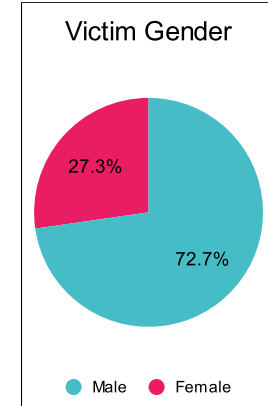
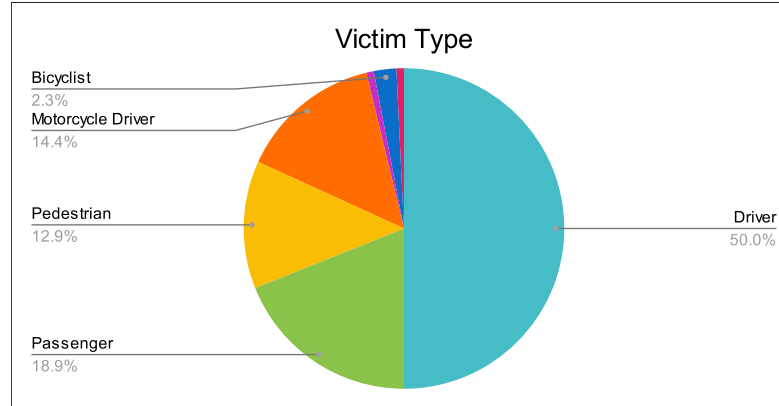
7/3/2023

Crash Details	
Total Fatal Crashes	115
Fatalities	132

Victim Type		
Driver	66	50%
Passenger	25	19%
Pedestrian	17	13%
Motorcycle Driver	19	14%
Motorcycle Passenger	1	1%
Bicyclist	3	2%
Person on Personal Conveyance	1	1%

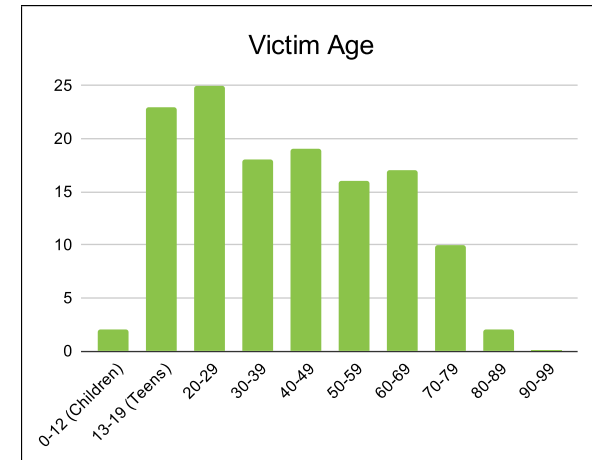
Victim Gender		
Male	96	73%
Female	36	27%
Unknown	0	0%

Victim Age		
0-12 (Children)	2	2%
13-19 (Teens)	23	17%
20-29	25	19%
30-39	18	14%
40-49	19	14%
50-59	16	12%
60-69	17	13%
70-79	10	8%
80-89	2	2%
90-99	0	0%



Speed		
Yes	45	34%
No	65	49%
Unknown	5	4%
Not Known Yet	17	13%

Safety Equipment		
	Seat Belt Use	Helmet Use
Yes/Correct	35	3
Yes/Not Correct	3	0
Yes/Unknown	1	1
No	37	10
Unknown	4	0
Not Applicable	42	107
Not Known Yet	10	11



These numbers are preliminary and could change at anytime. The information in this report is based off the data available at the time the report was created.

For questions please contact the Traffic Records Supervisor at the Utah Highway Safety Office.