

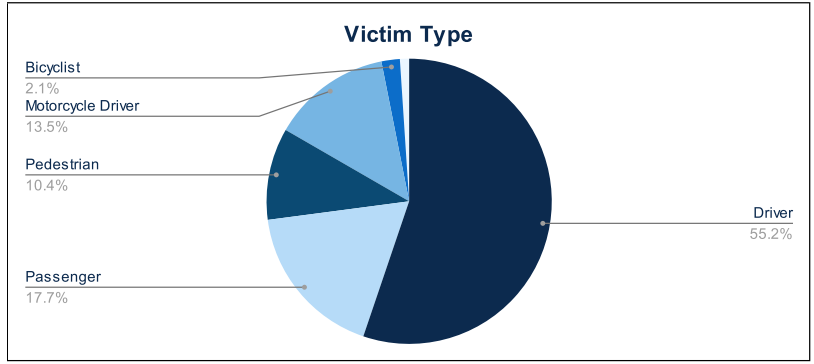


Statewide Fatalities

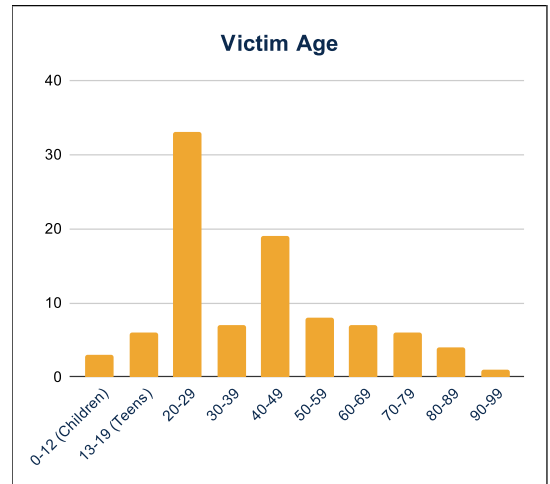
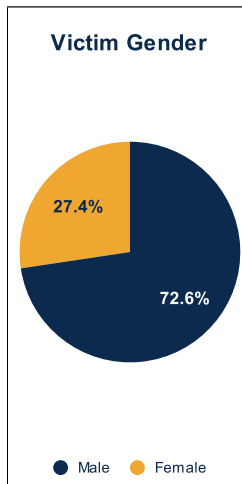
06/10/2024

Crash Details	
Total Fatal Crashes	90
Fatalities	96

Victim Type		
Driver	53	55%
Passenger	17	18%
Pedestrian	10	10%
Motorcycle Driver	13	14%
Motorcycle Passenger	0	0%
Bicyclist	2	2%
Person on Personal Conveyance	1	1%

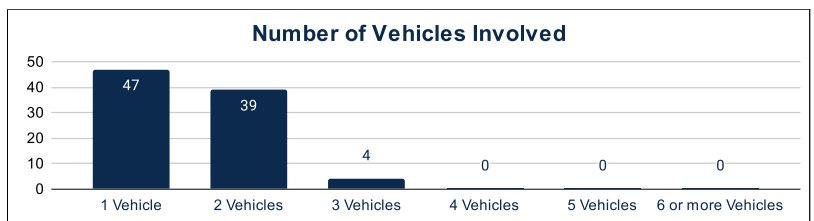


Victim Gender		
Male	69	72%
Female	26	27%
Unknown	0	0%



Victim Age		
0-12 (Children)	3	3%
13-19 (Teens)	6	6%
20-29	33	34%
30-39	7	7%
40-49	19	20%
50-59	8	8%
60-69	7	7%
70-79	6	6%
80-89	4	4%
90-99	1	1%

Number of Vehicles Involved		
1 Vehicle	47	52%
2 Vehicles	39	43%
3 Vehicles	4	4%
4 Vehicles	0	0%
5 Vehicles	0	0%
6 or more Vehicles	0	0%



Safety Equipment		
	Seat Belt Use	Helmet Use
Yes/Correct	20	4
Yes/Not Correct	3	1
Yes/Unknown	1	0
No	25	12
Unknown	6	1
Not Applicable	27	74
Not Known Yet	11	3

Contributing Circumstances		
Failed to Yield Right-of-Way	10	10%
Disregarded Traffic Signs/Signals	4	4%
Followed too Closely	3	3%
Improper Stopping	0	0%
Improper Passing	1	1%
Improper Turn	1	1%
Improper Lane Usage	2	2%
Aggressive/Reckless Driving	0	0%
Wrong-Way Driving	5	5%
Distracted Driving	0	0%
Drowsy Driving	2	2%
Over-Correcting	5	5%
Suspected DUI	7	7%
Hit & Run	0	0%

Speed		
Yes	21	22%
No	54	56%
Unknown	2	2%
Not Known Yet	15	16%

These numbers are preliminary and could change at anytime. The information in this report is based off the data available at the time the report was created. For any questions, please contact the Traffic Records Supervisor at the Utah Highway Safety Office.