

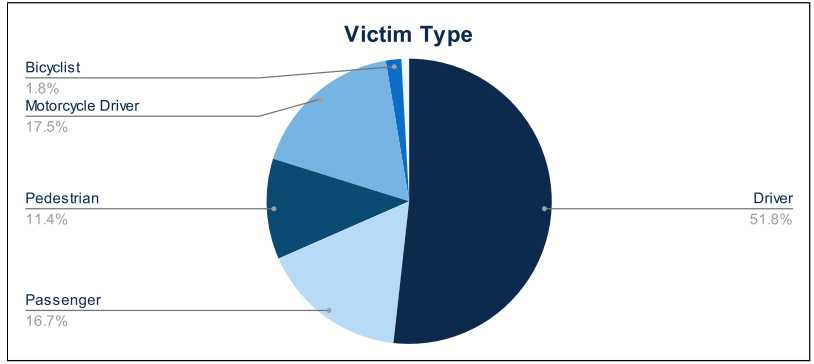


Statewide Fatalities

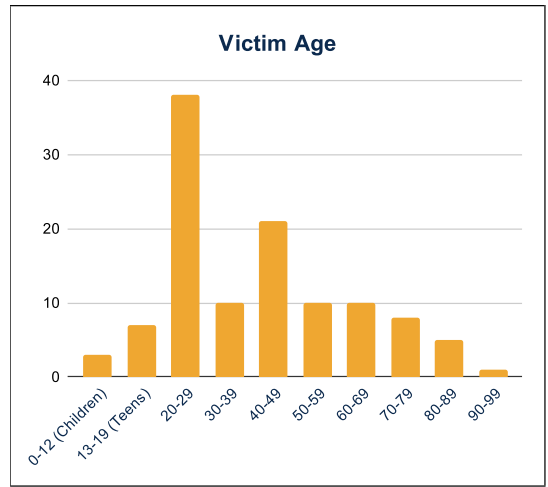
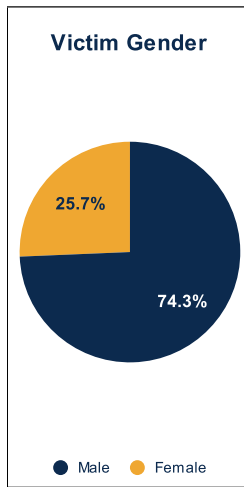
07/01/2024

Crash Details	
Total Fatal Crashes	109
Fatalities	115

Victim Type		
Driver	59	51%
Passenger	19	17%
Pedestrian	13	11%
Motorcycle Driver	20	17%
Motorcycle Passenger	0	0%
Bicyclist	2	2%
Person on Personal Conveyance	1	1%

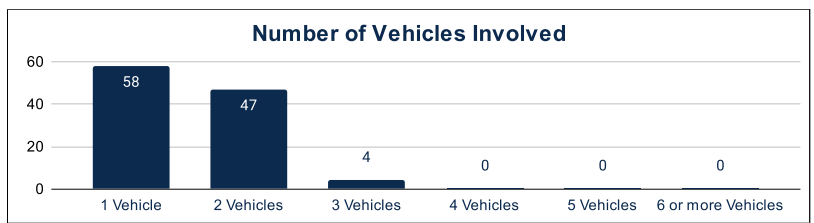


Victim Gender		
Male	84	73%
Female	29	25%
Unknown	0	0%



Victim Age		
0-12 (Children)	3	3%
13-19 (Teens)	7	6%
20-29	38	33%
30-39	10	9%
40-49	21	18%
50-59	10	9%
60-69	10	9%
70-79	8	7%
80-89	5	4%
90-99	1	1%

Number of Vehicles Involved		
1 Vehicle	58	53%
2 Vehicles	47	43%
3 Vehicles	4	4%
4 Vehicles	0	0%
5 Vehicles	0	0%
6 or more Vehicles	0	0%



Safety Equipment		
	Seat Belt Use	Helmet Use
Yes/Correct	29	6
Yes/Not Correct	3	1
Yes/Unknown	2	0
No	25	13
Unknown	8	1
Not Applicable	36	86
Not Known Yet	11	7

Contributing Circumstances		
Failed to Yield Right-of-Way	10	9%
Disregarded Traffic Signs/Signals	4	3%
Followed too Closely	3	3%
Improper Stopping	0	0%
Improper Passing	1	1%
Improper Turn	2	2%
Improper Lane Usage	3	3%
Aggressive/Reckless Driving	0	0%
Wrong-Way Driving	5	4%
Distracted Driving	0	0%
Drowsy Driving	2	2%
Over-Correcting	5	4%
Suspected DUI	7	6%
Hit & Run	1	1%

Speed		
Yes	24	21%
No	65	57%
Unknown	1	1%
Not Known Yet	24	21%

These numbers are preliminary and could change at anytime. The information in this report is based off the data available at the time the report was created. For any questions, please contact the Traffic Records Supervisor at the Utah Highway Safety Office.