

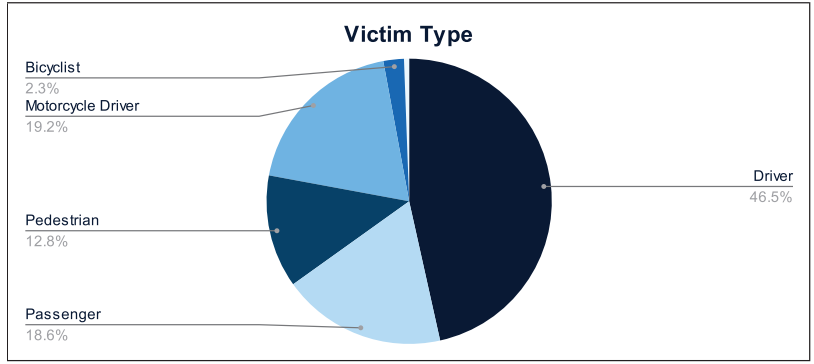


Statewide Fatalities

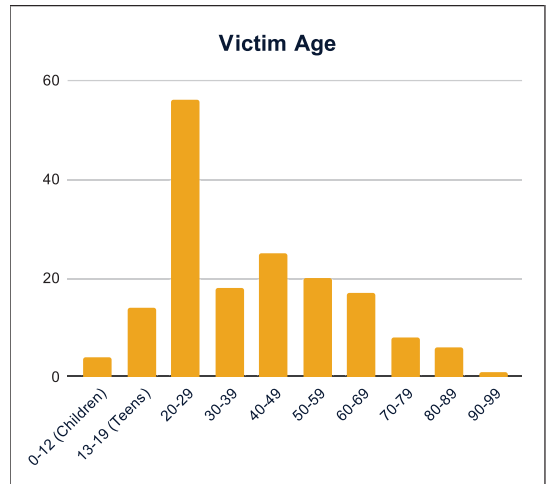
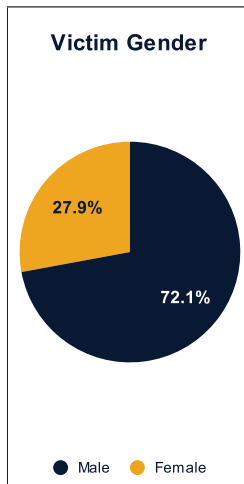
08/19/2024

Crash Details	
Total Fatal Crashes	160
Fatalities	176

Victim Type		
Driver	80	45%
Passenger	32	18%
Pedestrian	22	13%
Motorcycle Driver	33	19%
Motorcycle Passenger	0	0%
Bicyclist	4	2%
Person on Personal Conveyance	1	1%

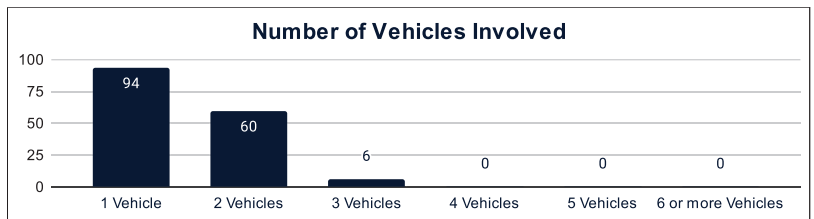


Victim Gender		
Male	124	70%
Female	48	27%
Unknown	0	0%



Victim Age		
0-12 (Children)	4	2%
13-19 (Teens)	14	8%
20-29	56	32%
30-39	18	10%
40-49	25	14%
50-59	20	11%
60-69	17	10%
70-79	8	5%
80-89	6	3%
90-99	1	1%

Number of Vehicles Involved		
1 Vehicle	94	59%
2 Vehicles	60	38%
3 Vehicles	6	4%
4 Vehicles	0	0%
5 Vehicles	0	0%
6 or more Vehicles	0	0%



Safety Equipment		
	Seat Belt Use	Helmet Use
Yes/Correct	41	10
Yes/Not Correct	4	1
Yes/Unknown	2	0
No	37	18
Unknown	11	2
Not Applicable	61	129
Not Known Yet	18	14

Contributing Circumstances		
Failed to Yield Right-of-Way	16	9%
Disregarded Traffic Signs/Signals	5	3%
Followed too Closely	3	2%
Improper Stopping	0	0%
Improper Passing	1	1%
Improper Turn	2	1%
Improper Lane Usage	3	2%
Aggressive/Reckless Driving	8	5%
Wrong-Way Driving	5	3%
Distracted Driving	3	2%
Drowsy Driving	3	2%
Over-Correcting	6	3%
Suspected DUI	16	9%
Hit & Run	1	1%

Speed		
Yes	57	32%
No	77	44%
Unknown	4	2%
Not Known Yet	36	20%

These numbers are preliminary and could change at anytime. The information in this report is based off the data available at the time the report was created. For any questions, please contact the Traffic Records Supervisor at the Utah Highway Safety Office.