



**UTAH
DEPARTMENT OF
PUBLIC SAFETY
HIGHWAY SAFETY
OFFICE**

UTAH CRASH FACTS -2023-

**4501 S 2700 W
TAYLORSVILLE, UT 84129**

**(801) 965-4400
HIGHWAYSAFETY.UTAH.GOV**



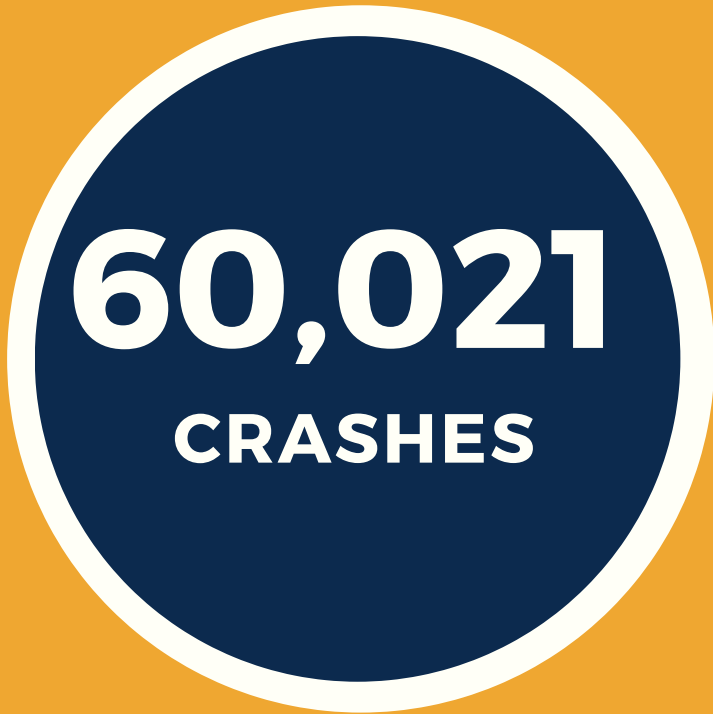
JESS ANDERSON, COMMISSIONER
UTAH DEPARTMENT OF PUBLIC SAFETY

ROBYN LALUMIA, DIRECTOR
UTAH HIGHWAY SAFETY OFFICE

BARBRA FREEMAN, TRAFFIC RECORDS MANAGER
UTAH HIGHWAY SAFETY OFFICE

SARAH ULRICH, FARS ANALYST
UTAH HIGHWAY SAFETY OFFICE

2023 CRASH FACTS

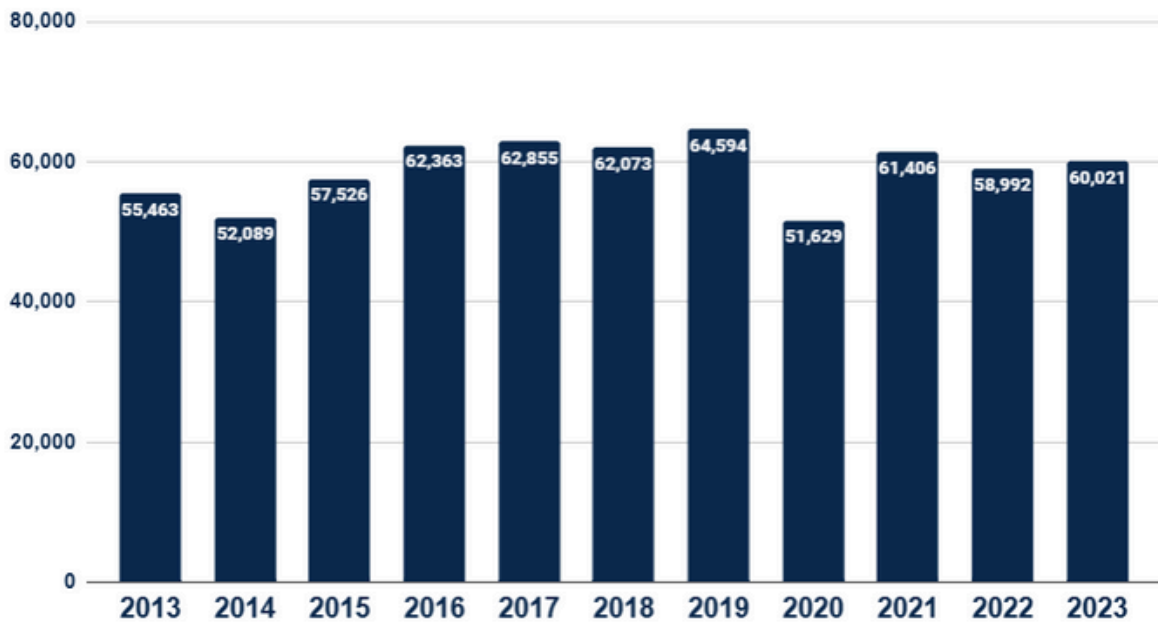


IN 2023....

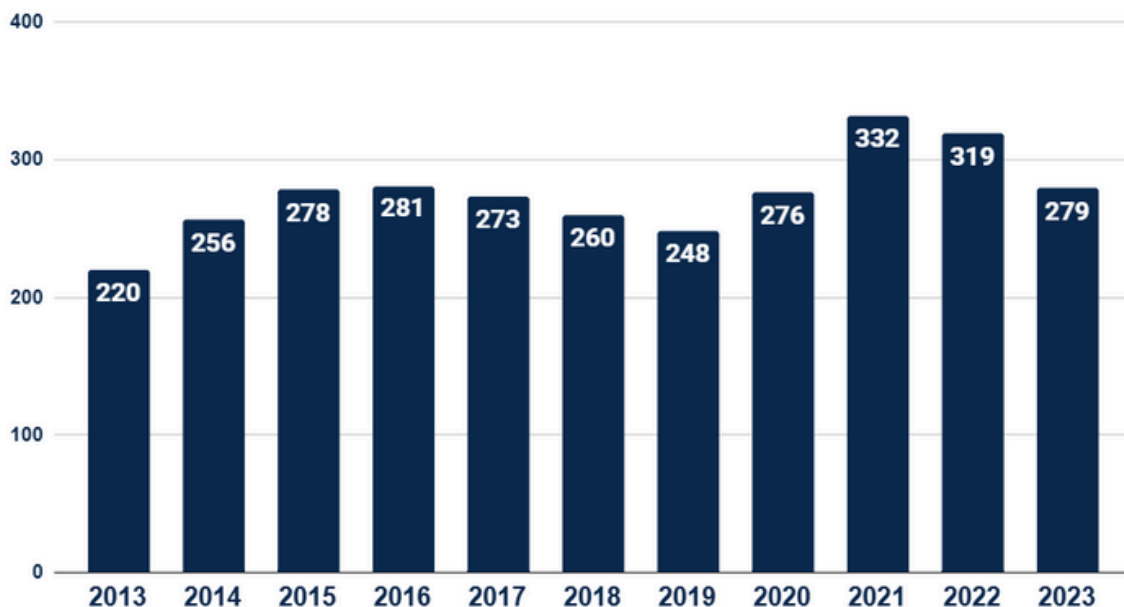
- A CRASH OCCURRED EVERY 8.8 MINUTES.
- A PERSON WAS INJURED IN A CRASH EVERY 19.7 MINUTES
- A PERSON DIED IN A CRASH EVERY 31.4 HOURS.



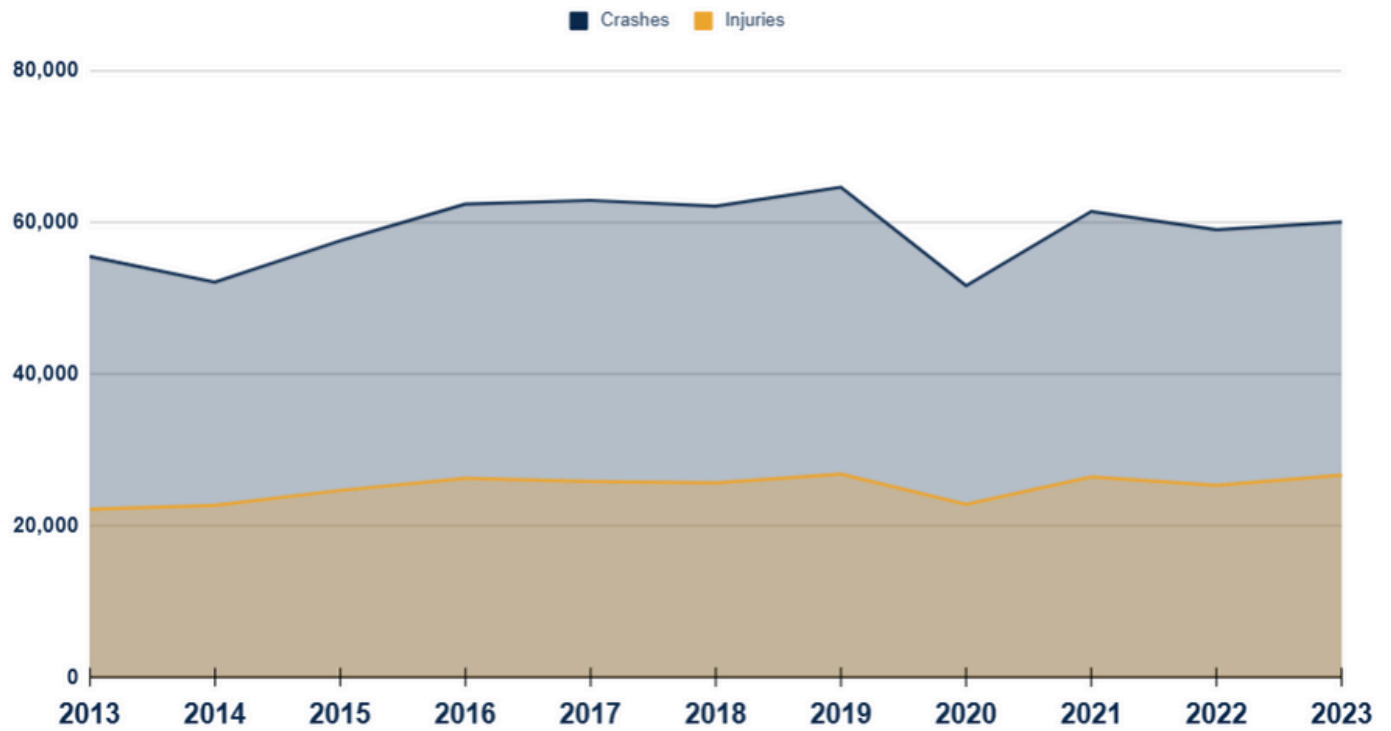
2013-2023 Crashes



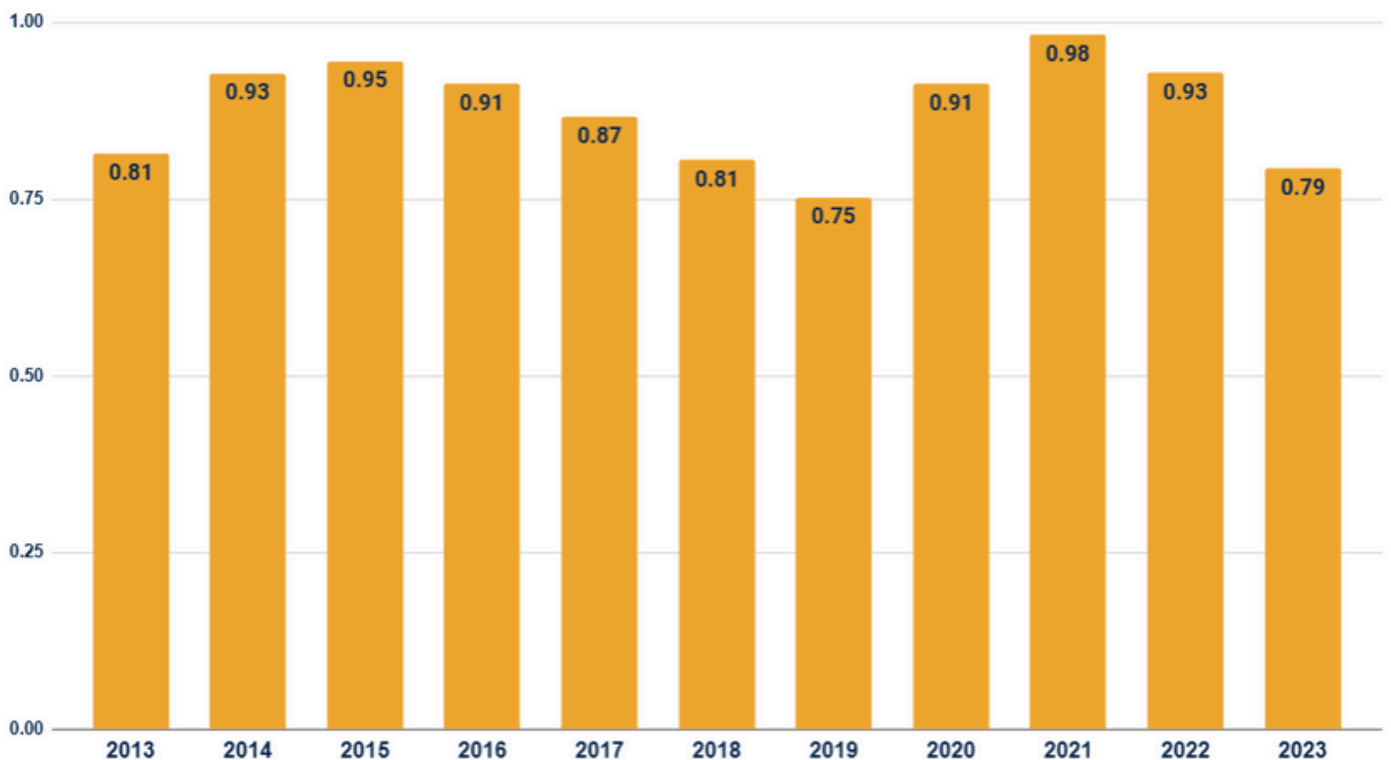
2013-2023 Fatalities



2013-2023 Crashes and Injuries



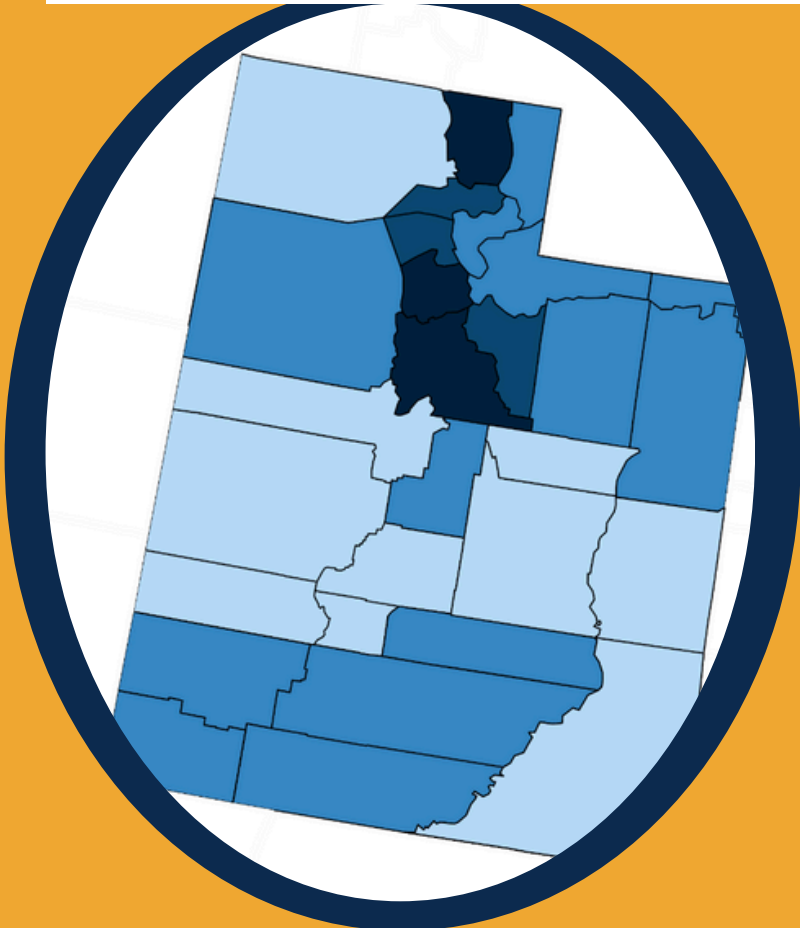
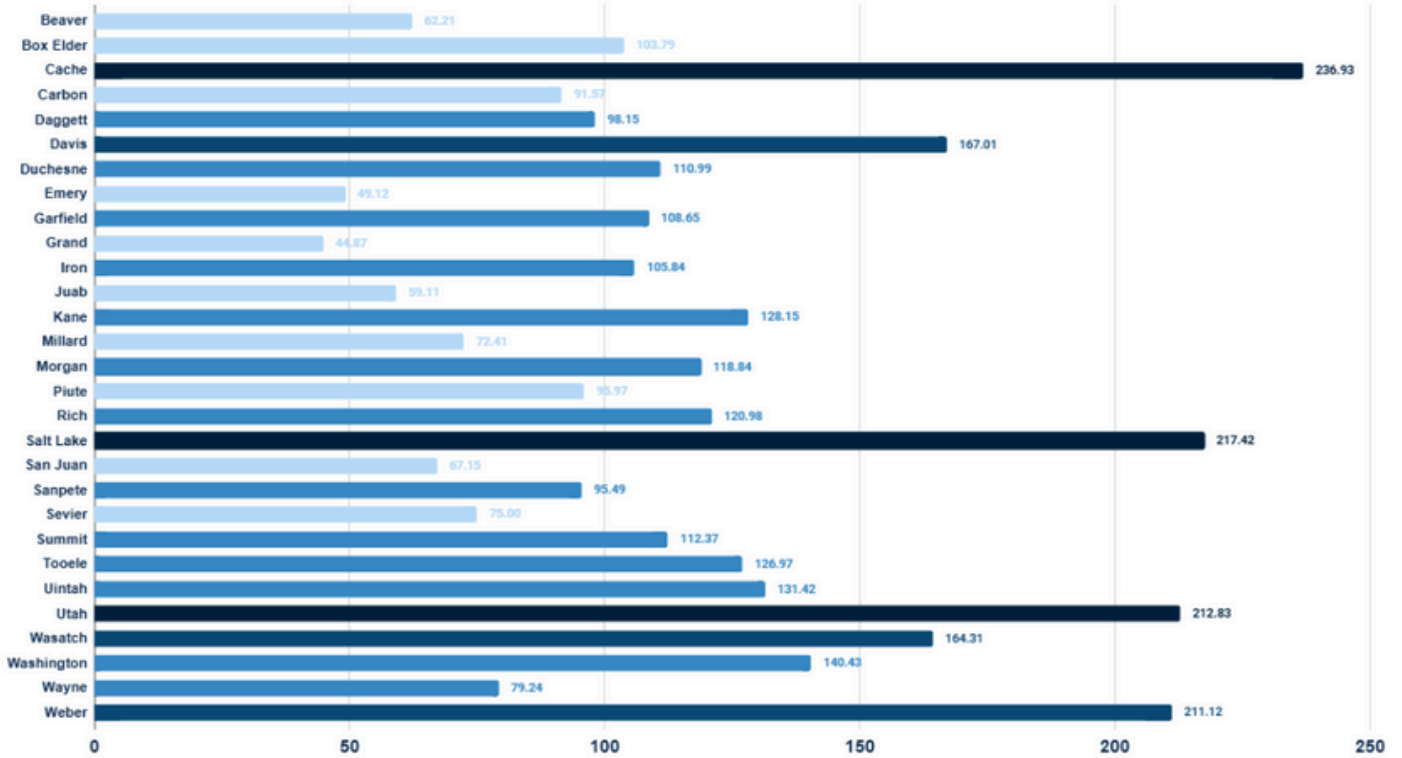
2013-2023 Fatality Rate per 100 Million Vehicle Miles Traveled



AFTER PEAKING IN 2021, TRAFFIC DEATHS PER VEHICLE MILES TRAVELED HAS DECREASED SINCE 2022.

WHERE?

2023 County Crash Rates Per 100 Million Vehicle Miles Traveled



COUNTIES WITH THE HIGHEST CRASH RATES

PER 100 MILLION VEHICLE MILES TRAVELED

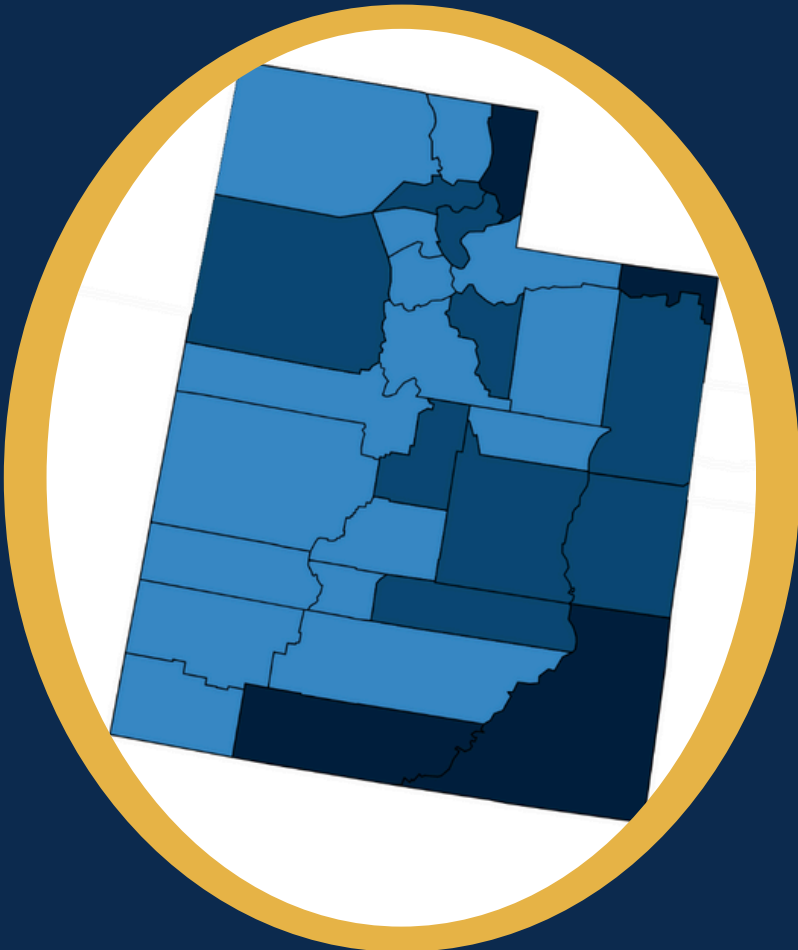
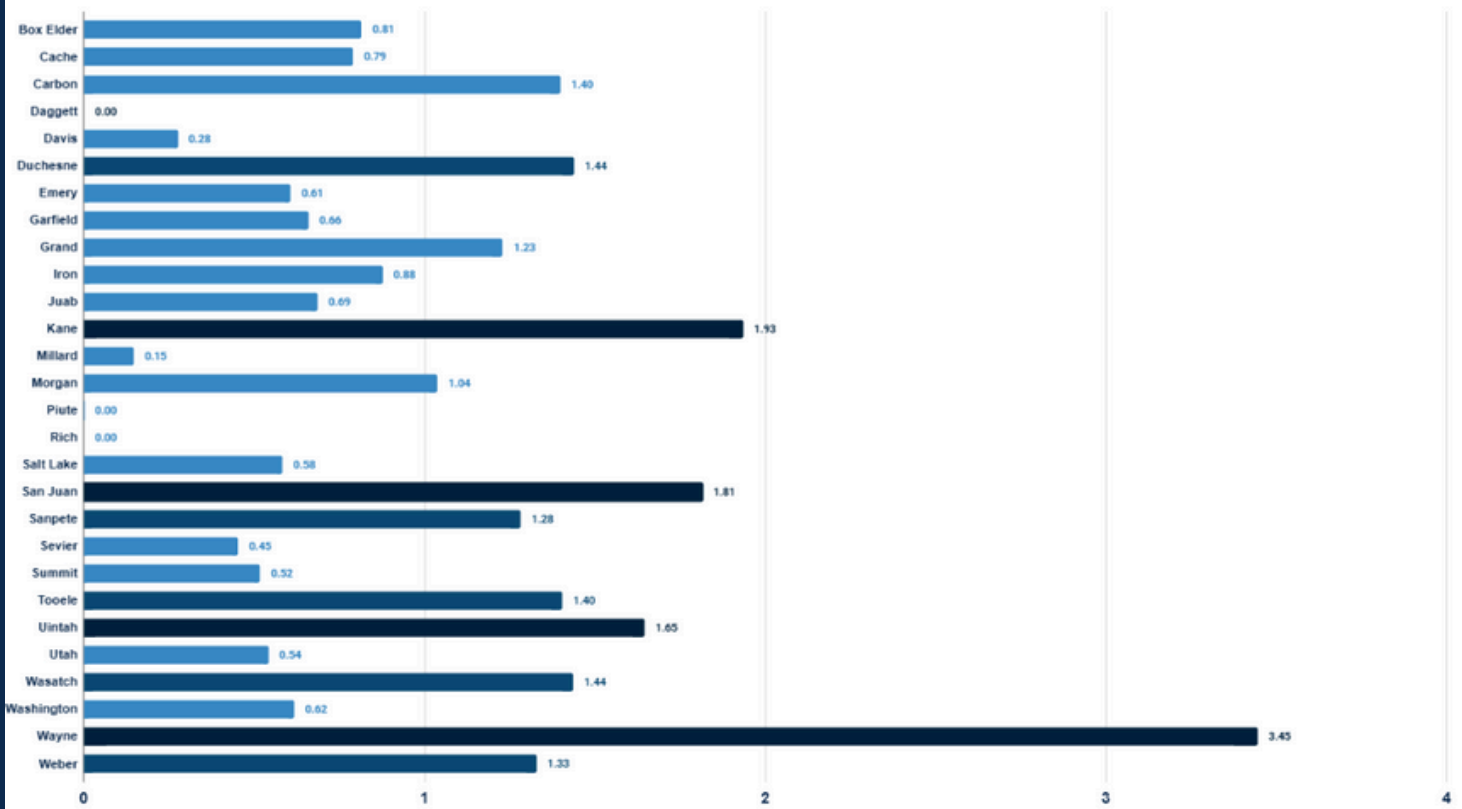
1. CACHE
2. SALT LAKE
3. UTAH
4. WEBER
5. DAVIS

Legend

- > 200
- 150-199
- 100-149
- 0-99

WHERE?

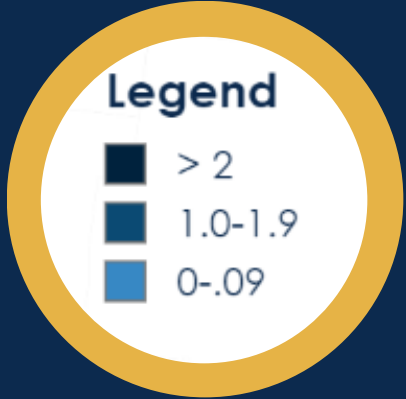
2023 County Fatal Crash Rates Per 100 Million Vehicle Miles Traveled



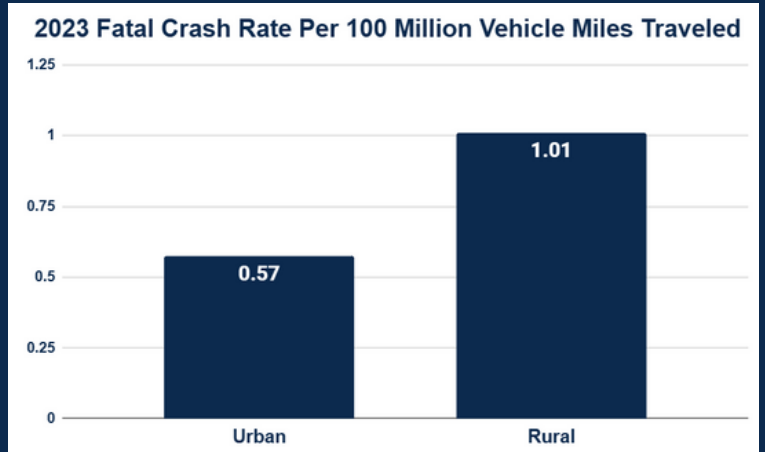
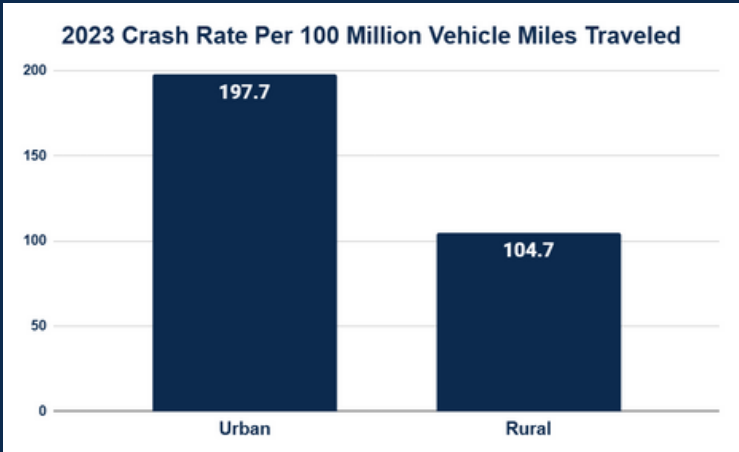
COUNTIES WITH THE HIGHEST FATAL CRASH RATES

PER 100 MILLION VEHICLE MILES TRAVELED

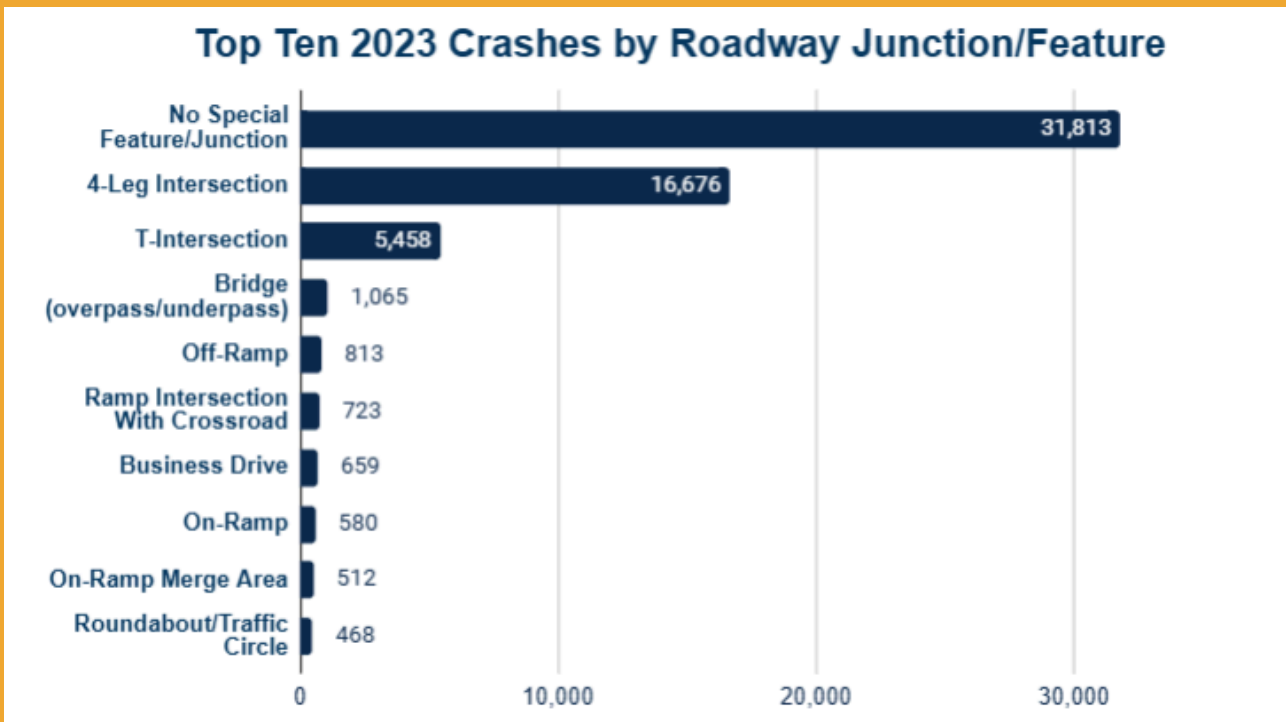
1. WAYNE
2. KANE
3. SAN JUAN
4. UINTAH
5. WASATCH




WHERE?




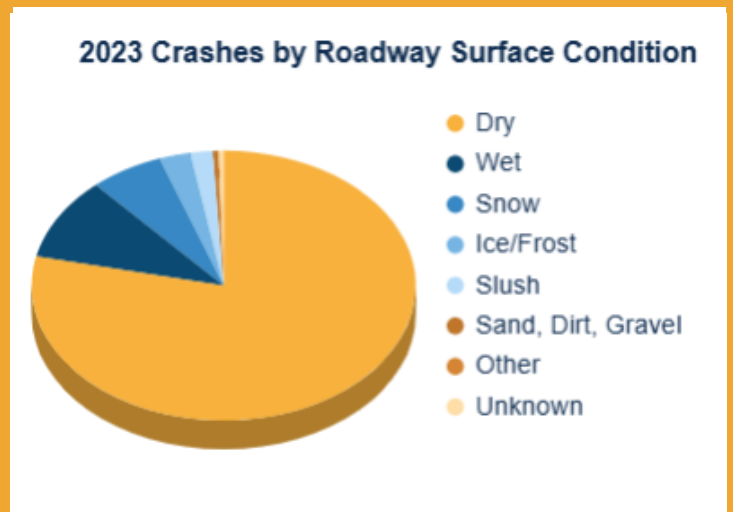
RURAL COUNTIES HAVE A HIGHER FATAL CRASH RATE PER 100 MILLION VEHICLE MILES TRAVELED COMPARED TO URBAN COUNTIES.



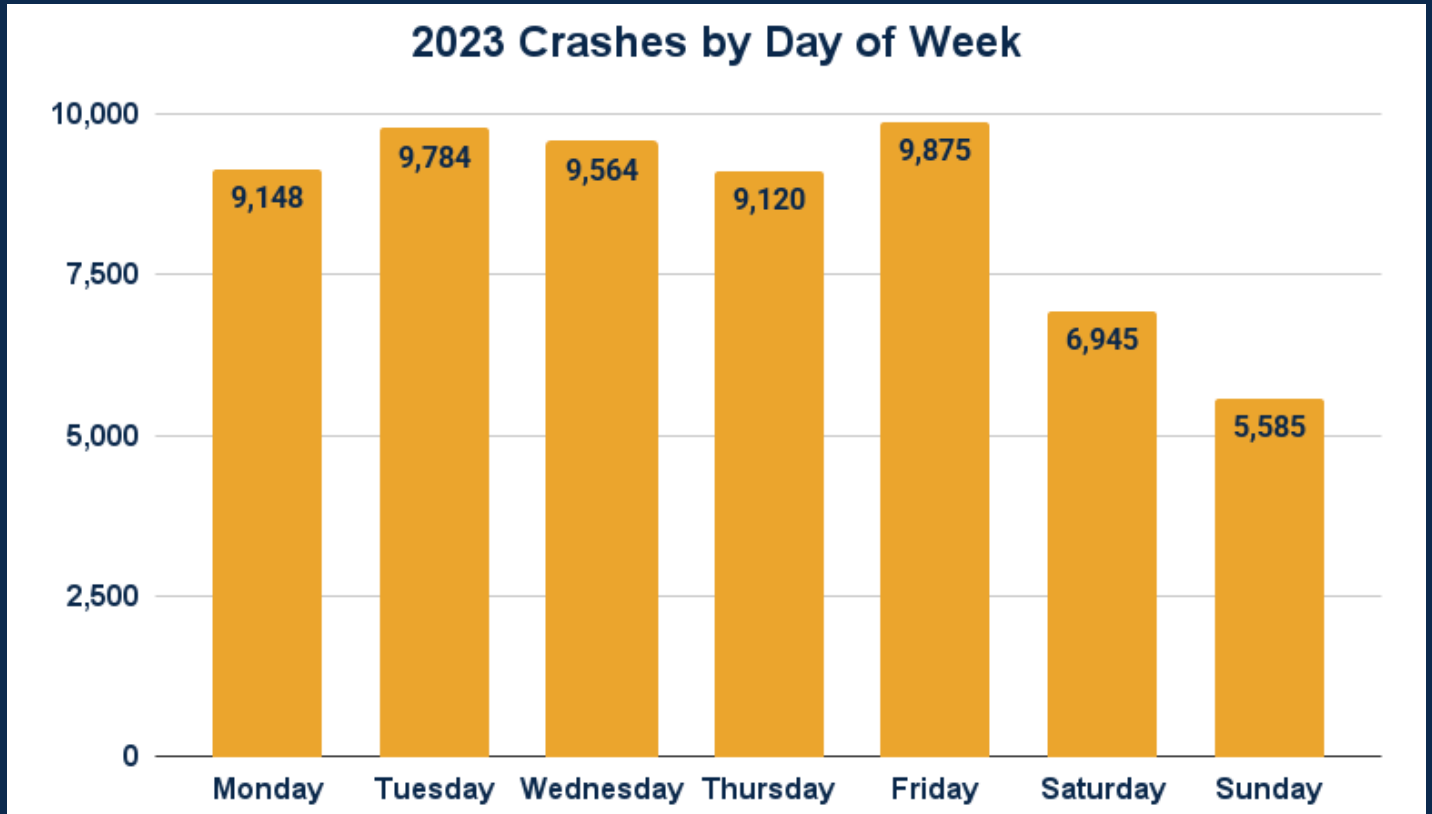
47%
of crashes occurred at an intersection



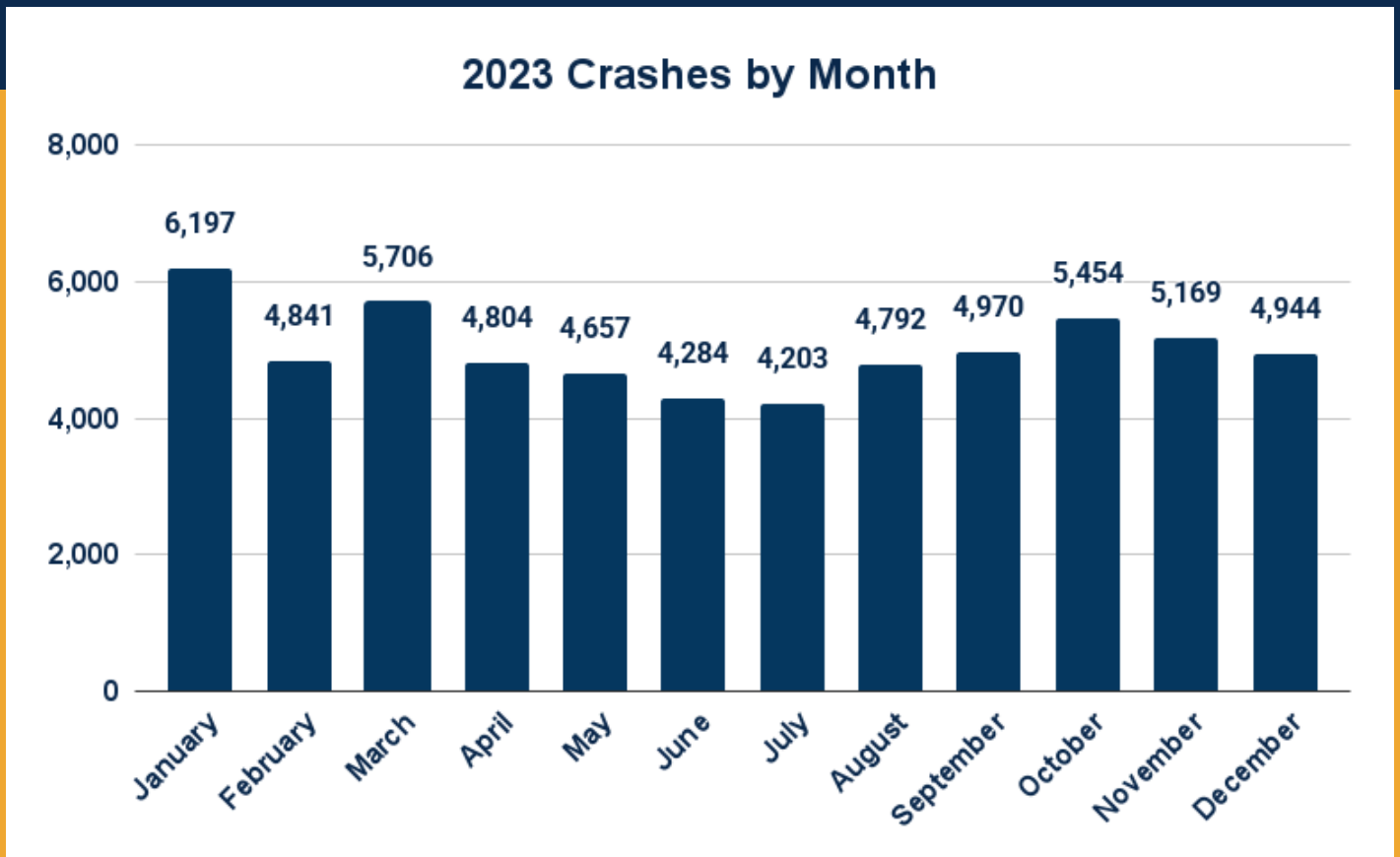
80%
of crashes occurred on dry roads

WHEN?



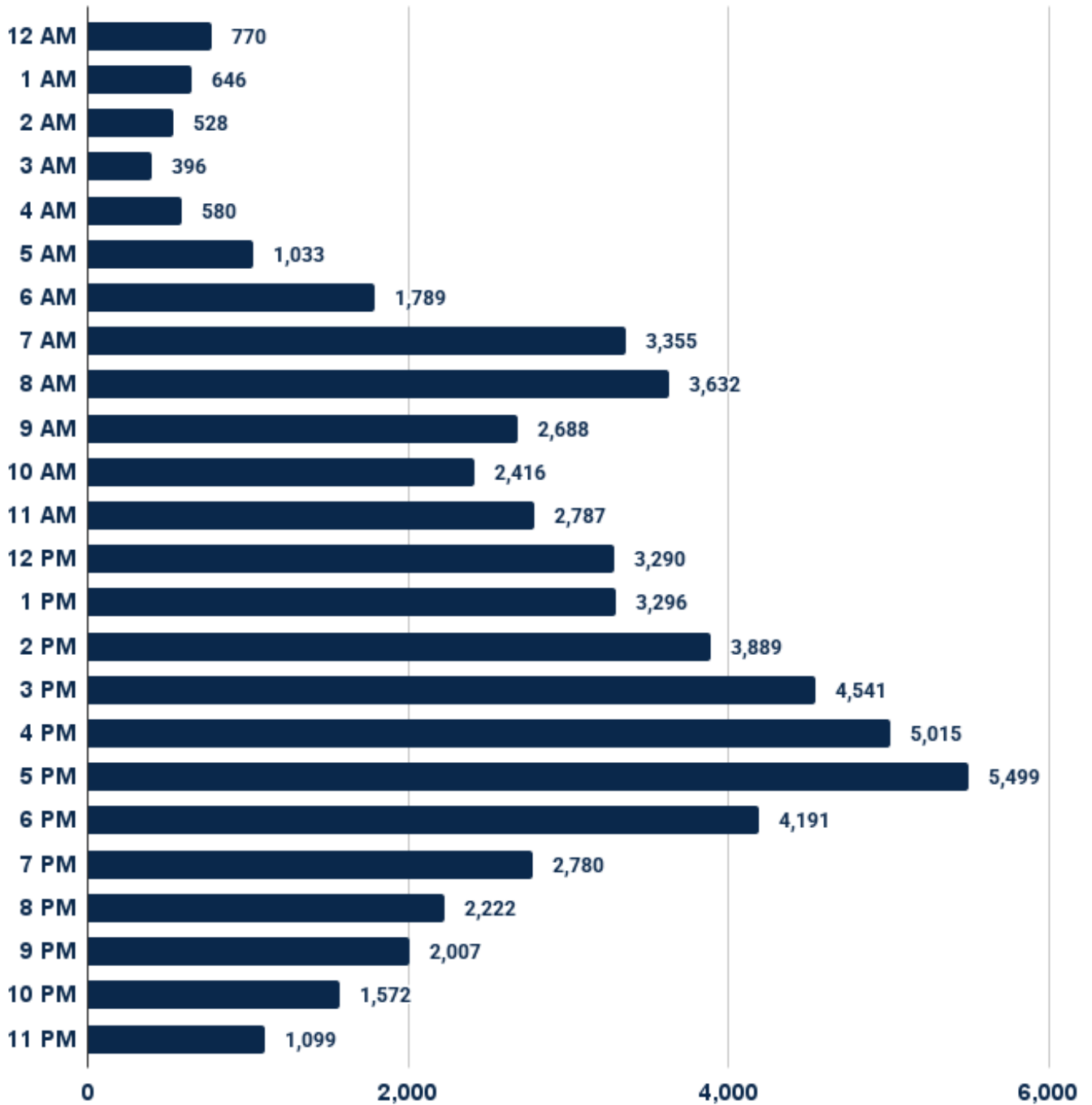
16.45% OF CRASHES OCCURRED ON A FRIDAY IN 2023



10.32% OF CRASHES TOOK PLACE IN JANUARY OF 2023

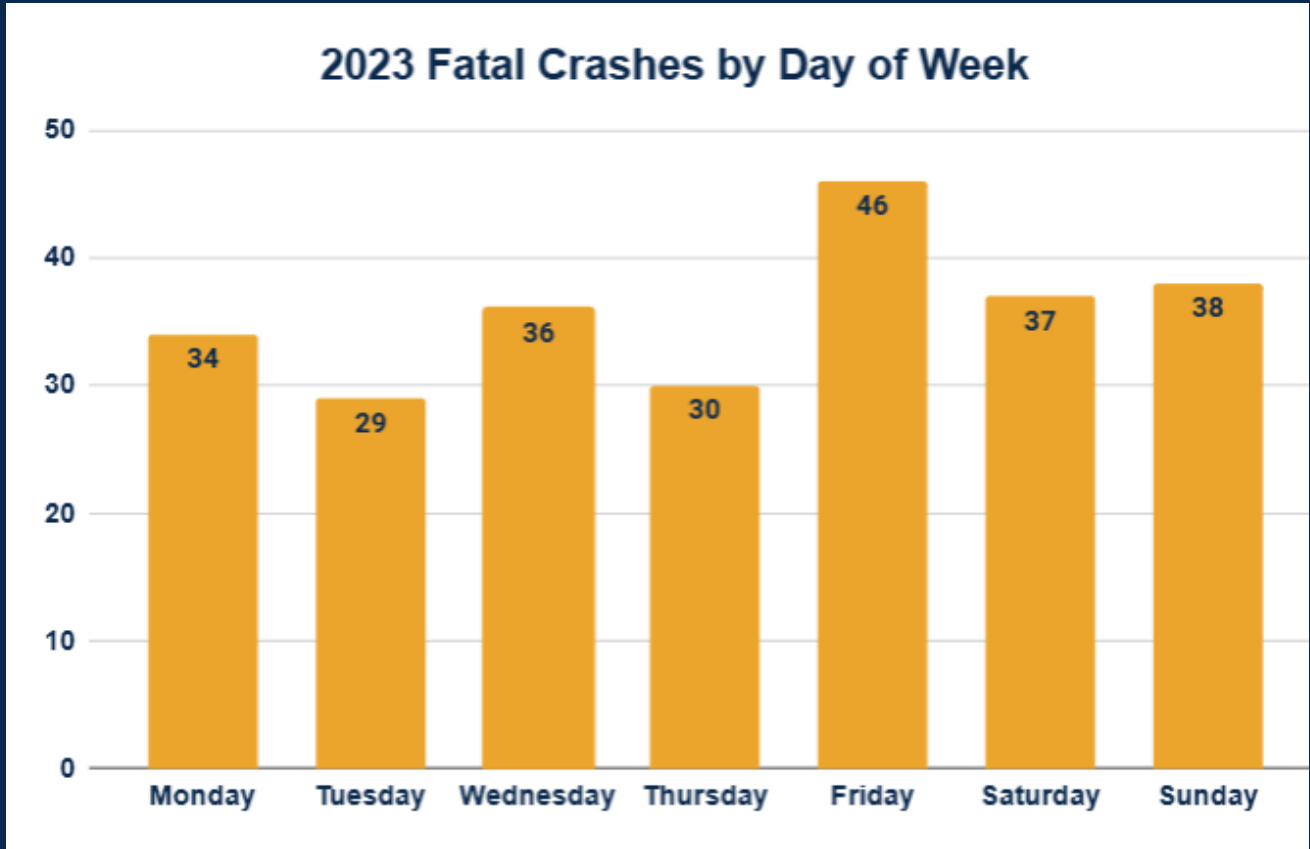
WHEN?

2023 Crashes by Time of Day

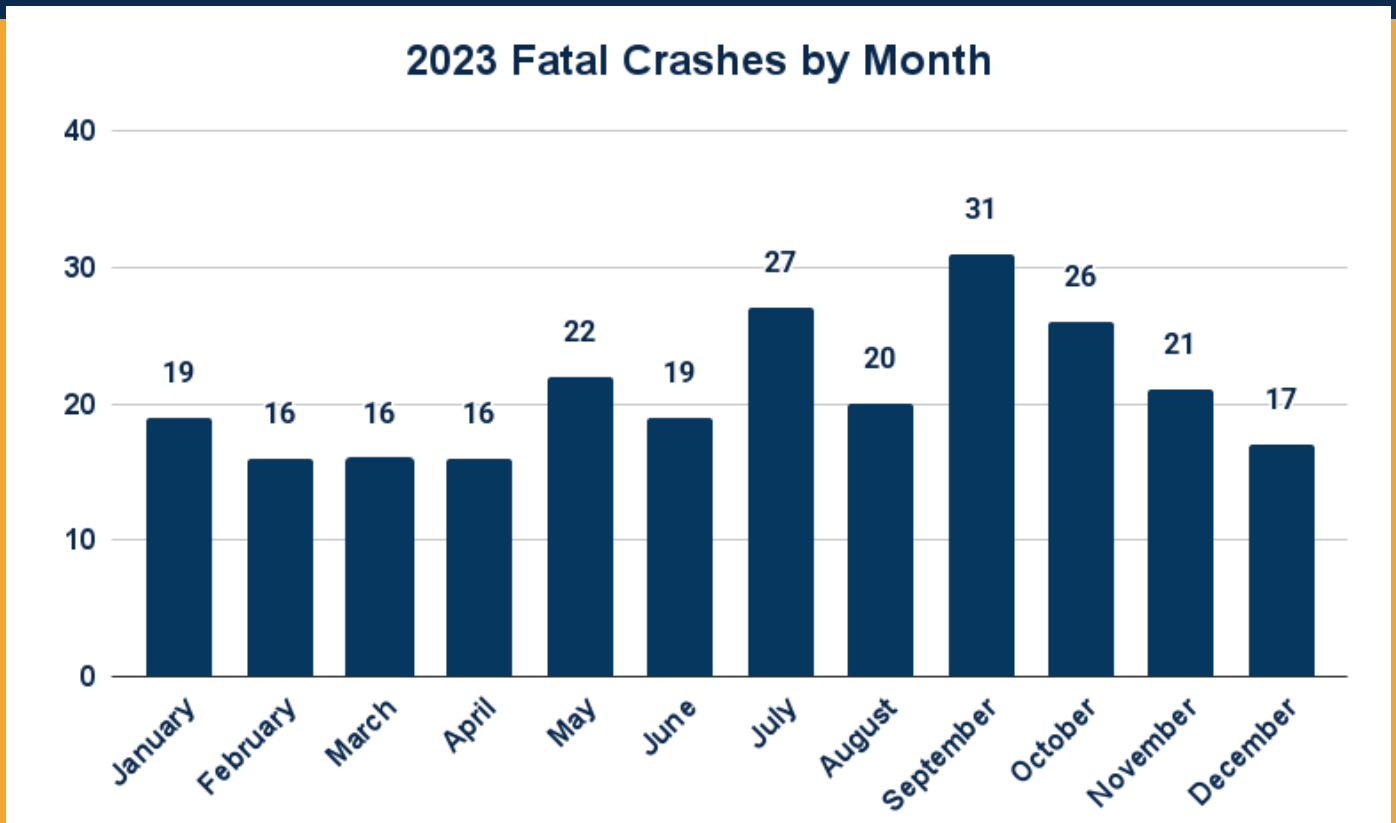


9.16% OF CRASHES OCCURRED AT 5:00 PM IN 2023

WHEN?

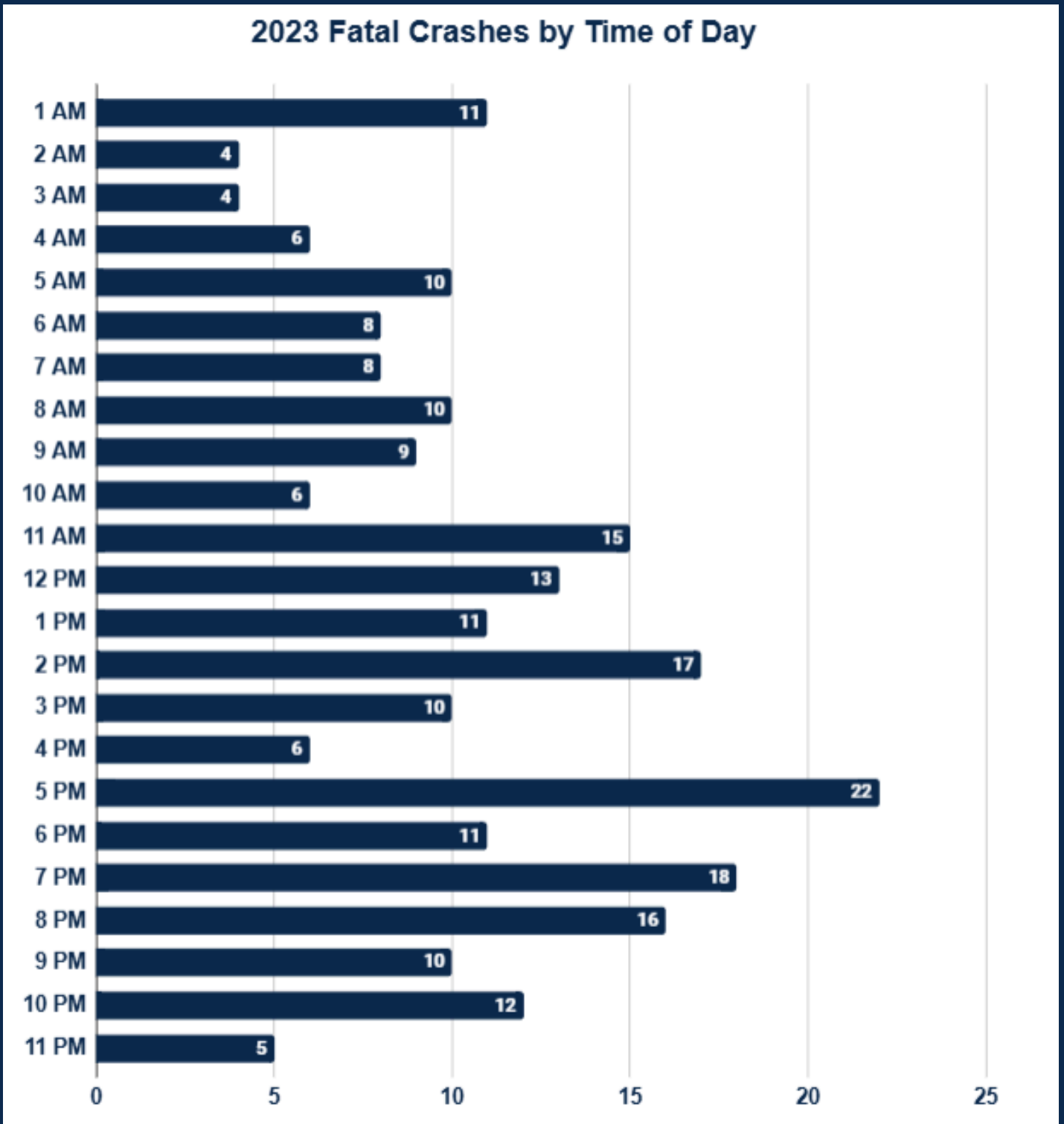


18.4% OF FATAL CRASHES OCCURRED ON A FRIDAY IN 2023



12.40% OF FATAL CRASHES TOOK PLACE IN SEPTEMBER OF 2023

WHEN?



8.8% OF FATAL CRASHES OCCURRED AT 5:00 PM IN 2023

WHY?

2023 DRIVER CONTRIBUTING CIRCUMSTANCES -ALL CRASHES-

1. Followed too Closely (19%)
2. Failed to Yield Right-of-Way (18%)
3. Failed to Keep in Proper Lane (13%)
4. Too Fast for Conditions (10%)
5. Unsafe Lane Change (5%)

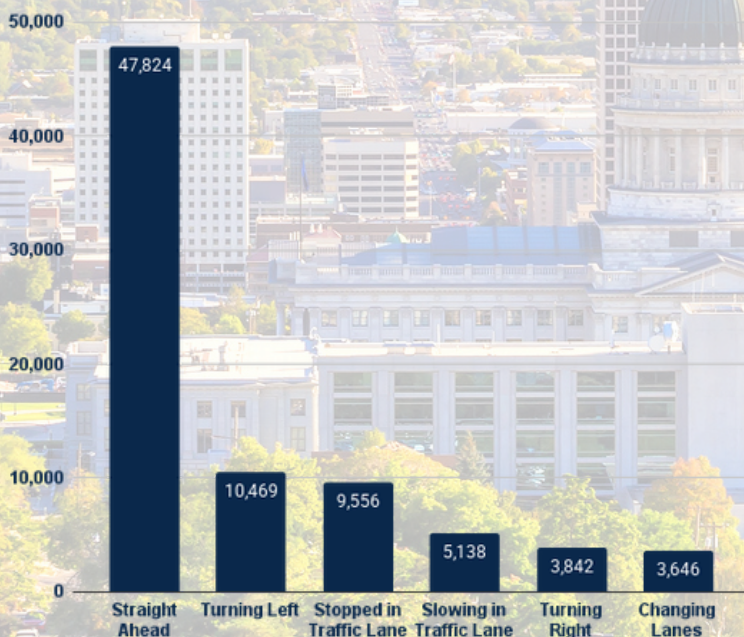
2023 DRIVER CONTRIBUTING CIRCUMSTANCES -FATAL CRASHES-

1. Failed to Keep in Proper Lane (32%)
2. Ran Off Road (12%)
3. Failed to Yield Right-of-Way (12%)
4. Too Fast for Conditions (9%)
5. Over-Correcting/Over-Steering (7%)

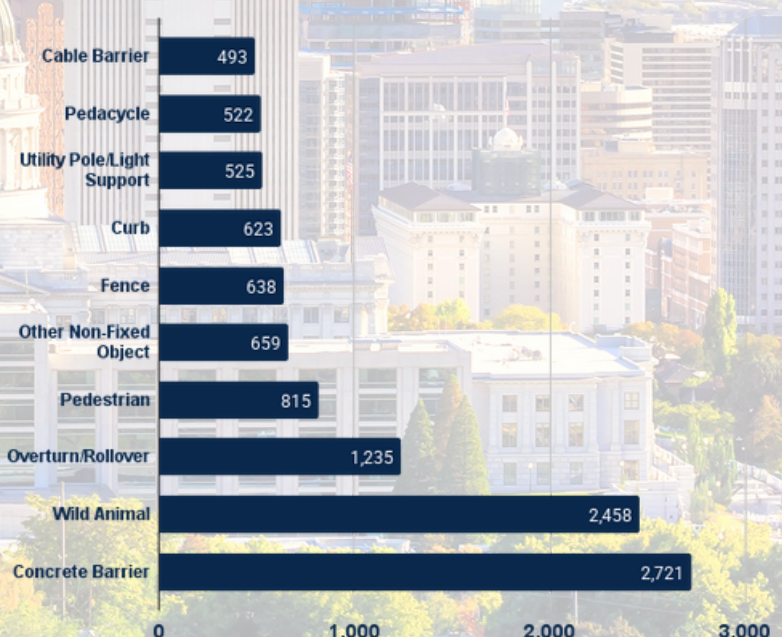
2023 Unrestrained Occupants in Crashes



2023 Top 5 Pre-Crash Movements

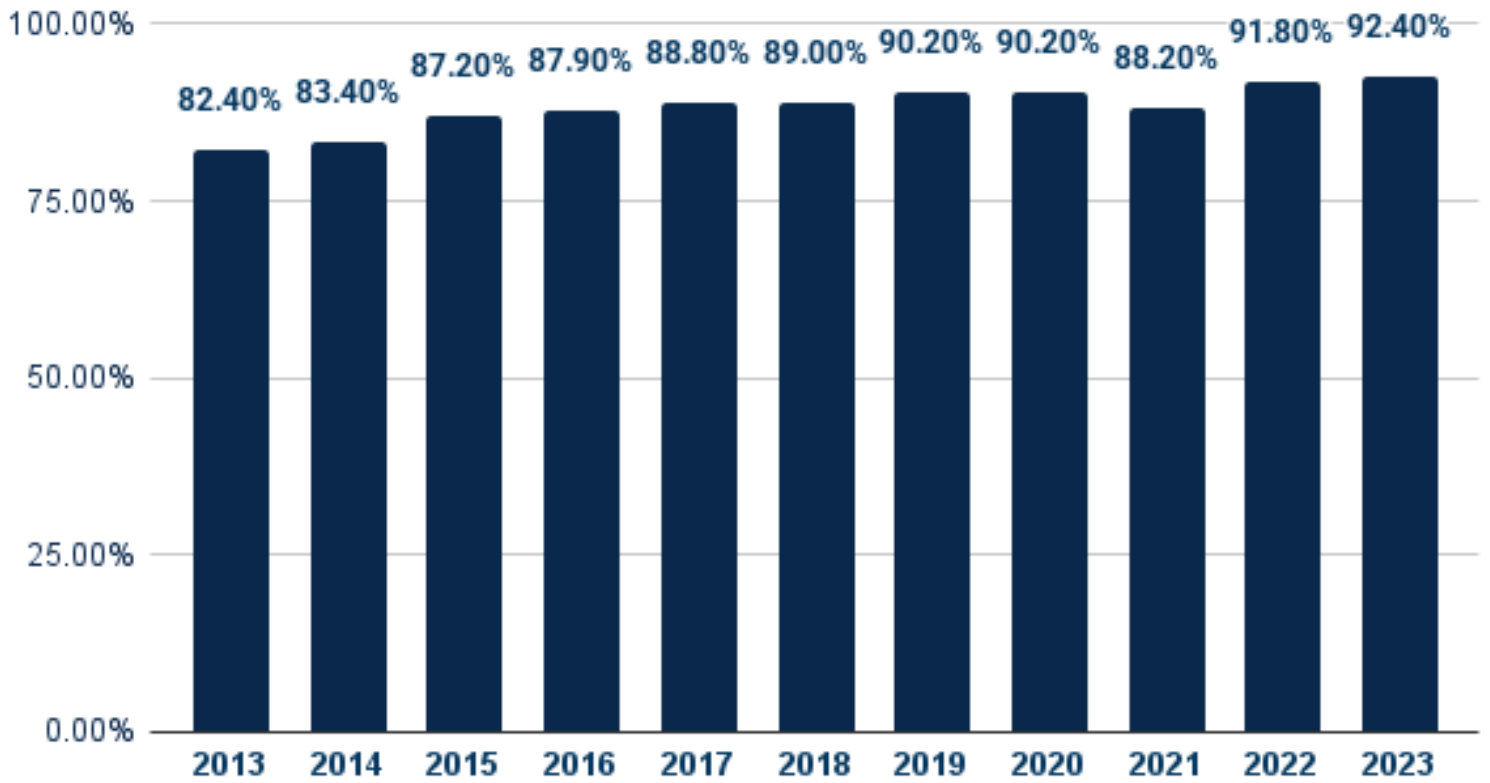


2023 Top 10 First Harmful Events



WHY?

Observed Seat Belt Use Survey



UTAH'S SEAT BELT USE RATE REACHED IT'S HIGHEST EVER IN 2023

SEAT BELT SURVEY INFORMATION

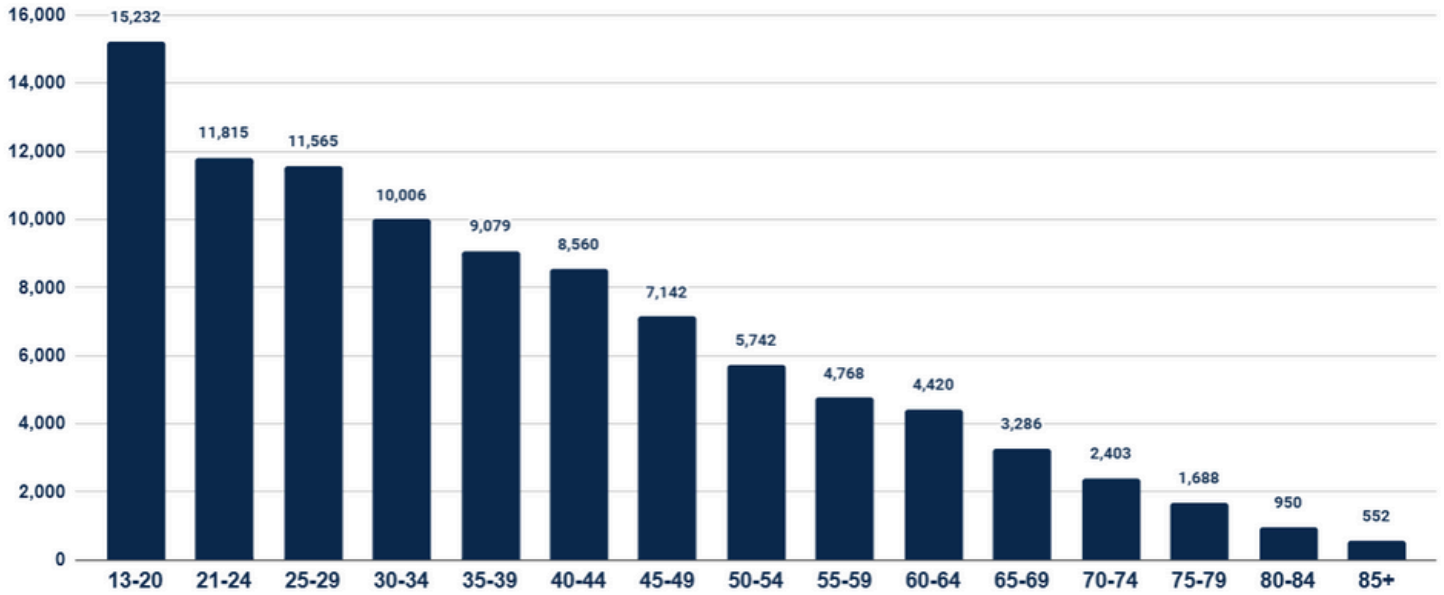
OVERALL, SEAT BELT USE IS HIGHER IN URBAN COUNTIES COMPARED TO RURAL COUNTIES.

FEMALE OCCUPANTS BUCKLED UP MORE OFTEN THAN MALE OCCUPANTS.

PICKUP TRUCK OCCUPANTS HAD THE LOWEST SEAT BELT USAGE RATE AT 86%.

WHO?

2023 Crashes by Driver Age



Teenage drivers account for 13% of total crashes, which is higher than any other age group.

People Involved in Crashes in 2023

Drivers	59,333
Passengers	17,858
Motorcycle Drivers	1,147
Motorcycle Passengers	76
Pedestrians	817
Bicyclists	548
Scooter/Skater	111

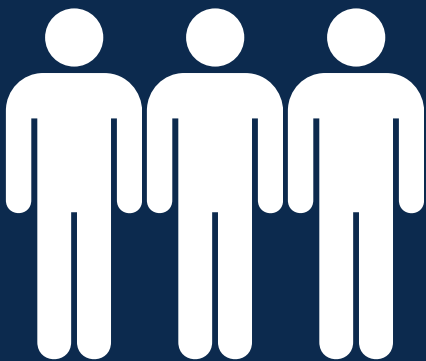
2023 FATALITIES

Driver	143	51%
Passenger	45	16%
Motorcycle Driver	39	14%
Motorcycle Passenger	3	1%
Pedestrian	40	14%
Bicyclist	9	3%
Scooter/Skater	0	0%

Fatalities by Gender

72%

MALE



28%

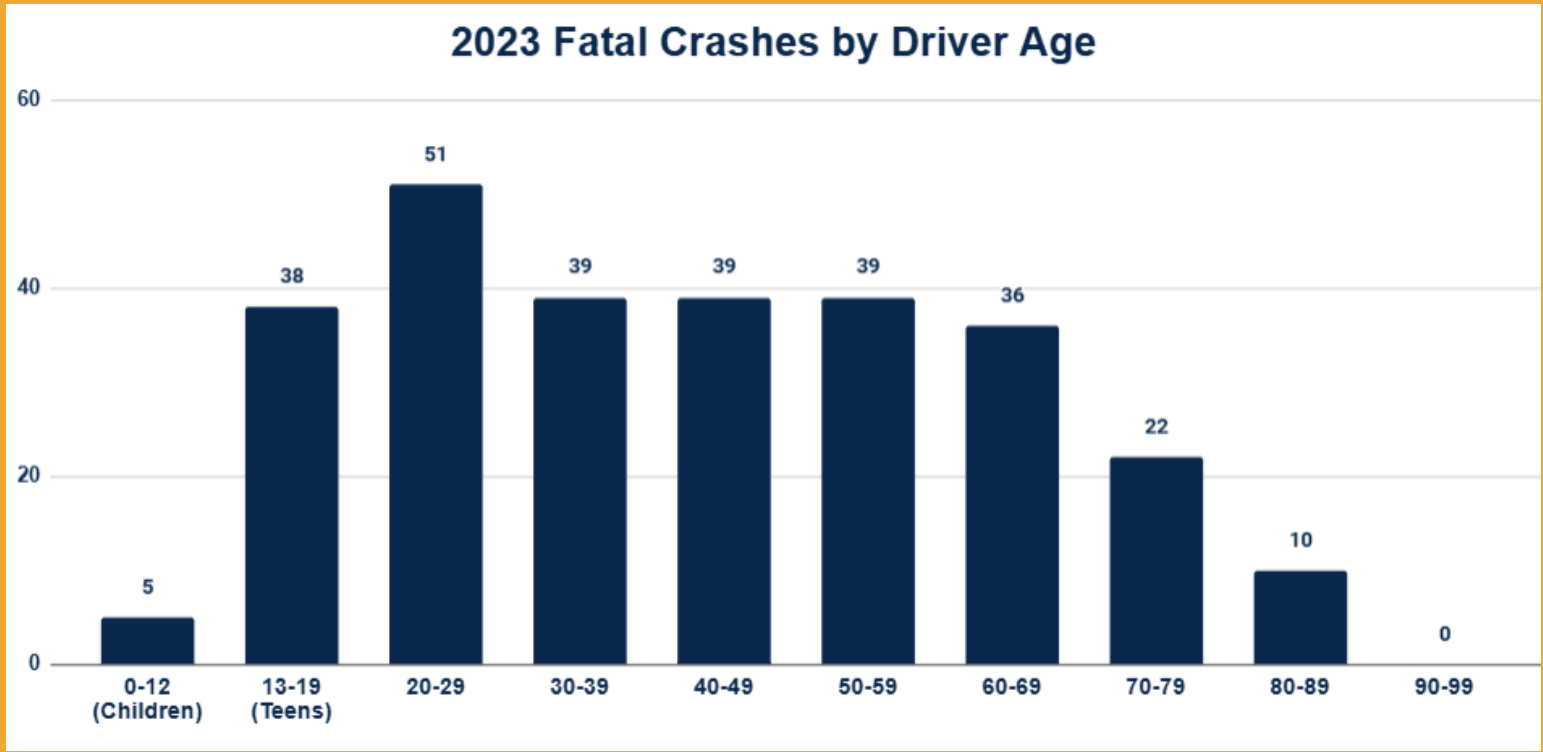
FEMALE



IN 2023, FOR EVERY 4 FATALITIES, 3 WERE MALE AND 1 WAS FEMALE.

FATALITIES

2023 Fatal Crashes by Driver Age



In 2023....

8%

of deaths involved
**Aggressive
Driving/Road
Rage**

17%

of deaths involved a
Impaired Driver
(BAC 0.05 & above)

29%

of deaths were
Speed Related

7%

of deaths involved
**Distracted
Driving**

2%

of deaths involved a
**Wrong-Way
Driver**

34%

of occupant
deaths were
Unrestrained