

Utah 2024 Seat Belt Fact Sheet

CLICK IT OR TICKET
UTAH DEPARTMENT OF PUBLIC SAFETY



UTAH'S 2024 OBSERVED SEAT BELT USE RATE IS 90.7%

**CACHE COUNTY HAD THE HIGHEST
INCREASE THIS YEAR! (+10%)**

57% of unbuckled fatalities occurred at night

Males accounted for 71% of all unbuckled fatalities in Utah

56.2% of unbuckled fatalities occurred in rural areas

Someone dies in a US crash every 16 minutes

70% of kids skip seat belts if the driver isn't buckled

from
2019 - 2023,
347
Utahns died unbuckled in a crash.



an additional
7,300 Utahns
were injured
because of
not wearing a
seat belt.

BUCKLE UP PROPERLY:



- Position the shoulder belt across the shoulder and ribcage, away from your neck, and never behind your back.
- Place the lap belt low and tight across your hips and below your stomach.

Airbags are designed to work with seat belts, **NOT** replace them.



Seat belt Use by County, 2018 - 2024

County	% Belted 2024	% Belted 2023	2022	2021	2019	2018
Box Elder	95.2%	87.2%	88.4%	89.2%	90.6%	94.2%
Cache	91.8	81.7	87.4	88.6	91.6	92.2
Carbon	83.4	83.4	79.9	72.0	94.8	87.7
Davis	93.1	91.9	95.4	87.1	94.2	93.7
Grand	96.8	94.9	93.3	90.3	88.2	88.2
Iron	91.1	86.1	87.3	84.6	84.1	79.7
Millard	90.0	91.5	85.8	94.4	93.2	92.2
Salt Lake	89.3	95.4	94.5	89.4	90.9	88.8
San Juan	90.7	90.7	85.0	76.6	81.7	80.2
Sanpete	91.4	82.0	87.9	75.0	81.8	77.3
Sevier	89.7	89.6	86.9	79.8	81.7	79.8
Summit	88.7	95.6	95.7	89.1	91.5	90.5
Tooele	91.6	91.1	95.9	85.9	91.5	90.6
Uintah	78.2	91.2	89.5	76.1	78.2	73.1
Utah	89.4	94.8	91.4	88.7	88.8	88.6
Wasatch	87.9	89.4	85.3	-	-	-
Washington	93.4	89.8	88.7	90.2	89.8	84.9
Weber	94.9	92.8	91.8	90.8	91.2	92.3
TOTAL	90.7	92.4	91.8	88.2	90.2	89.0

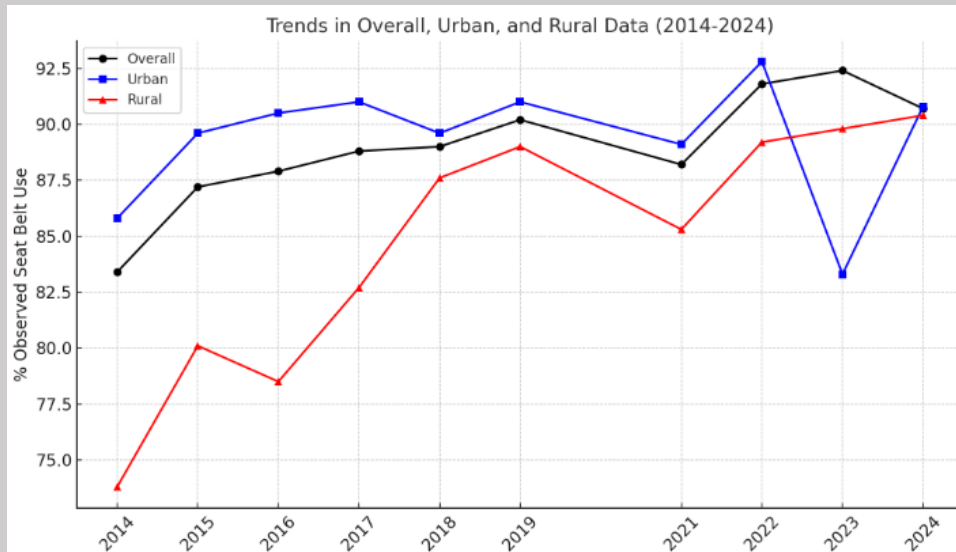
IT'S THE LAW:

All passengers must wear seat belts and children up to age 8 must be properly restrained in a booster or child safety seat. If you or anyone in your vehicle aren't properly restrained, you can be issued a citation.



Seat Belt Observational Study Highlights:

- Rural counties had higher observed seat belt usage rates for females and occupants of cars and vans, reversing the trend of previous years when urban counties led in usage across all vehicle types and genders
- Female passengers in vans had highest usage rate (95.6%)
- Male passengers in trucks had lowest usage rate (84.8%)
- Passengers tend to have higher usage rates than drivers



DID YOU KNOW?

In 1986, Utah's first seat belt study discovered that only 18% of Utah motorists used seat belts!

The National Highway Traffic Safety Administration (NHTSA) requires states to conduct observational surveys annually to determine the level of seat belt use statewide. Since then, occupant protection programs have been developed, implemented and evaluated, saving countless lives by encouraging individuals to do the number one thing they can do to protect themselves in a crash...wear a seat belt.

For complete observational study design and methodology, contact:

Utah Department of Public Safety - Highway Safety Office

801-965-4400

4501 S 2700 W Bldg #3, 2nd Floor, Taylorsville, UT 84129

clickit.utah.gov

