

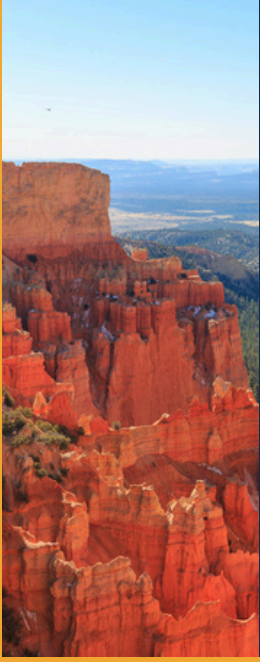


**UTAH
DEPARTMENT OF
PUBLIC SAFETY
HIGHWAY SAFETY
OFFICE**

UTAH CRASH FACTS -2024-

**4501 S 2700 W
TAYLORSVILLE, UT 84129**

**(801) 965-4400
HIGHWAYSAFETY.UTAH.GOV**



BEAU MASON, COMMISSIONER
UTAH DEPARTMENT OF PUBLIC SAFETY

ROBYN LALUMIA, DIRECTOR
UTAH HIGHWAY SAFETY OFFICE

BARBRA FREEMAN, TRAFFIC RECORDS MANAGER
UTAH HIGHWAY SAFETY OFFICE

SARAH ULRICH, FARS ANALYST
UTAH HIGHWAY SAFETY OFFICE

2024 CRASH FACTS

59,437
CRASHES

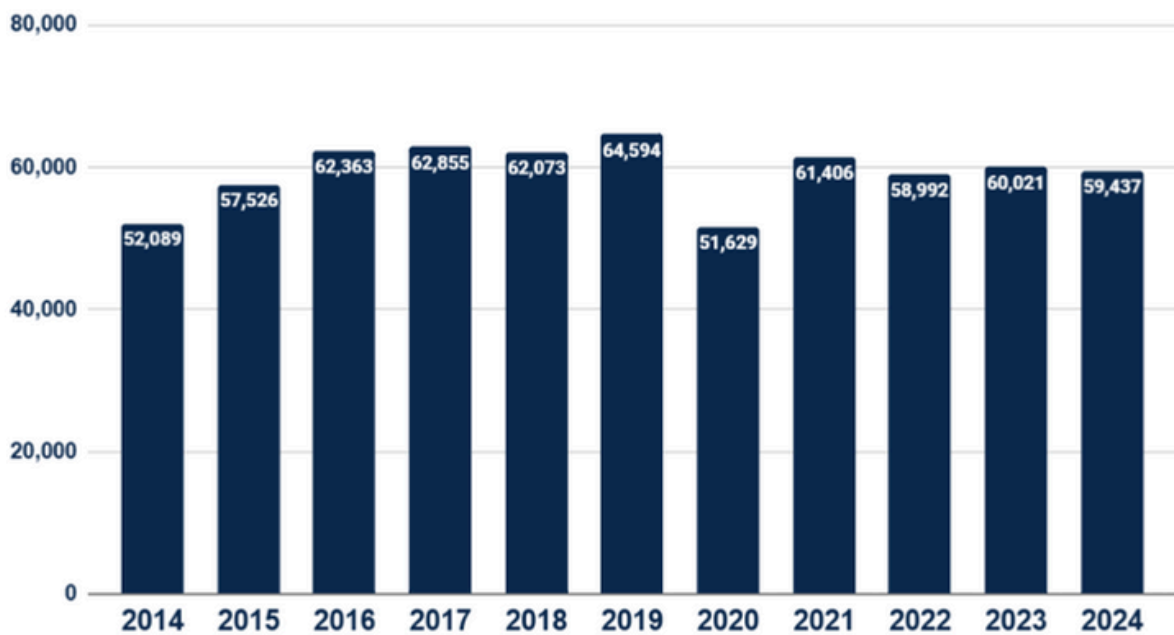
27,094
INJURIES

277
FATALITIES

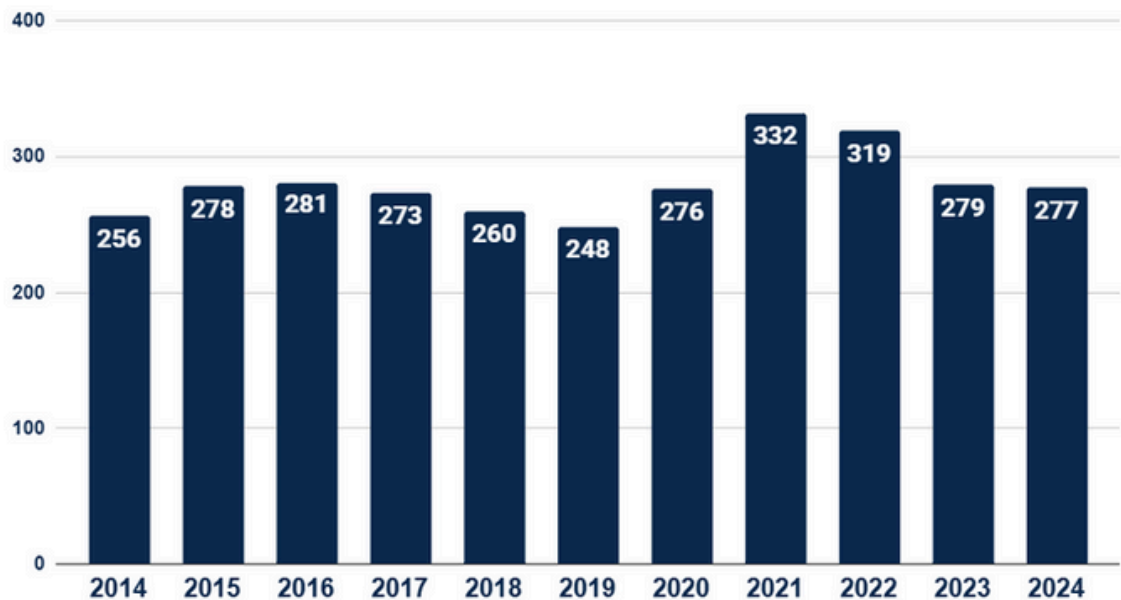
IN 2024....

- A CRASH OCCURRED EVERY 8.8 MINUTES.
- A PERSON WAS INJURED IN A CRASH EVERY 19.4 MINUTES
- A PERSON DIED IN A CRASH EVERY 31.6 HOURS.

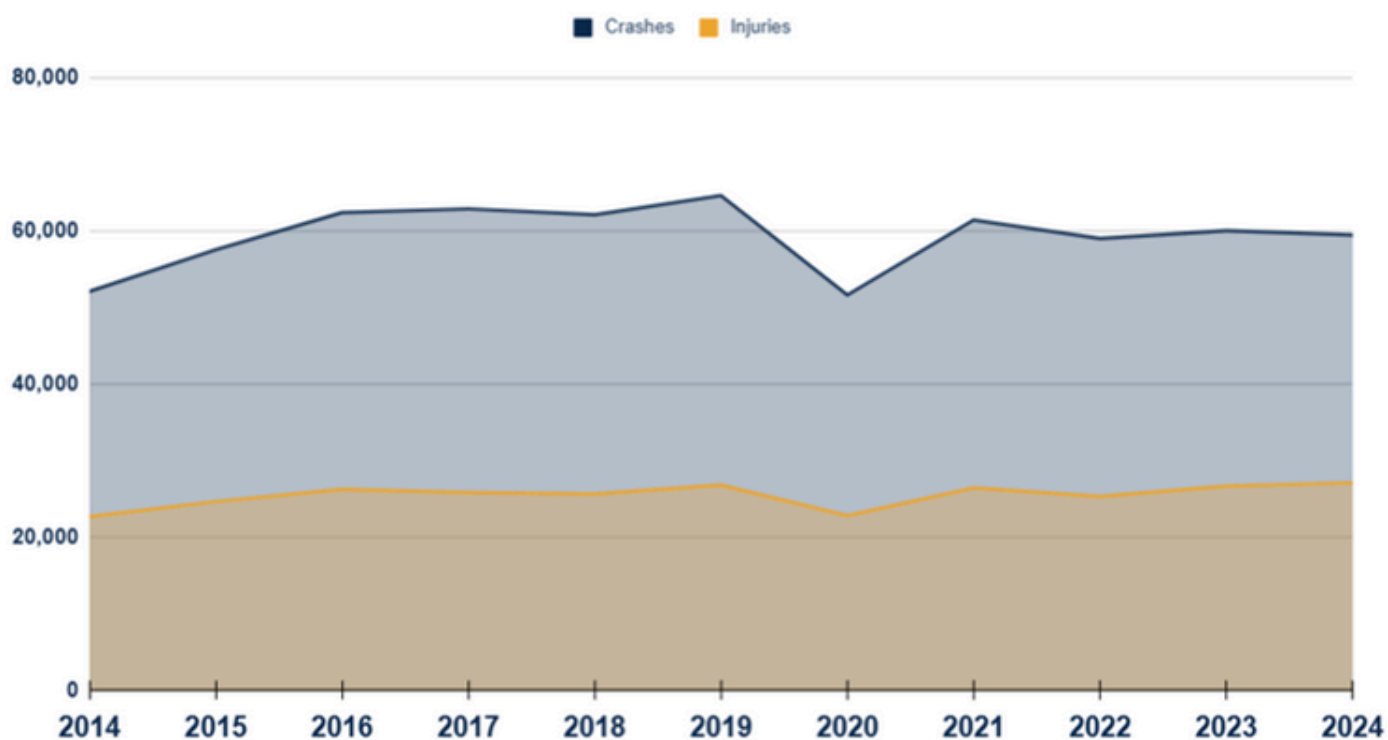
2014-2024 Crashes



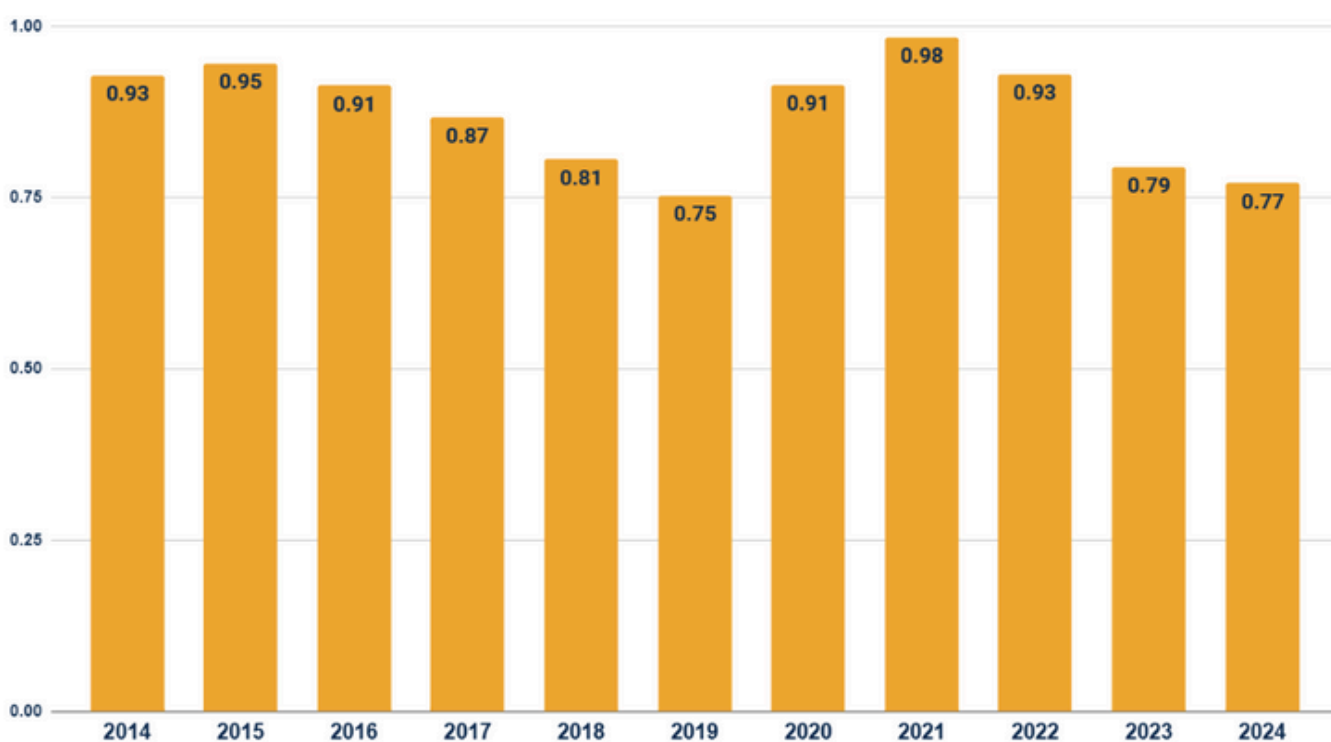
2014-2024 Fatalities



2014-2024 Crashes and Injuries



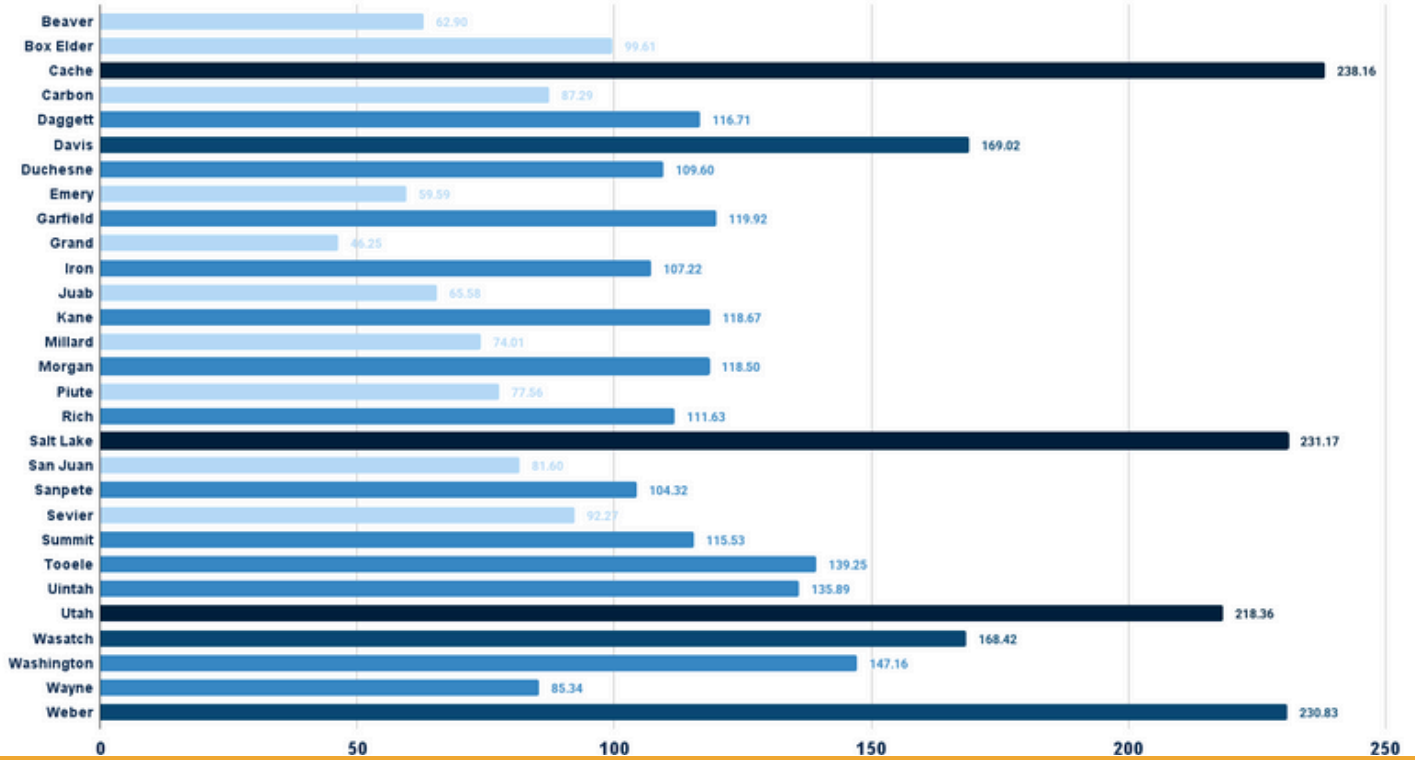
2014-2024 Fatality Rate per 100 Million Vehicle Miles Traveled



AFTER PEAKING IN 2021, TRAFFIC DEATHS PER VEHICLE MILES TRAVELED HAVE CONTINUED TO DECREASE SINCE 2022.

WHERE?

2024 County Crash Rates Per 100 Million Vehicle Miles Traveled

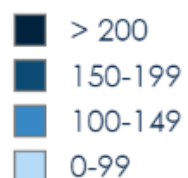


COUNTIES WITH THE HIGHEST CRASH RATES

PER 100 MILLION
VEHICLE MILES TRAVELED

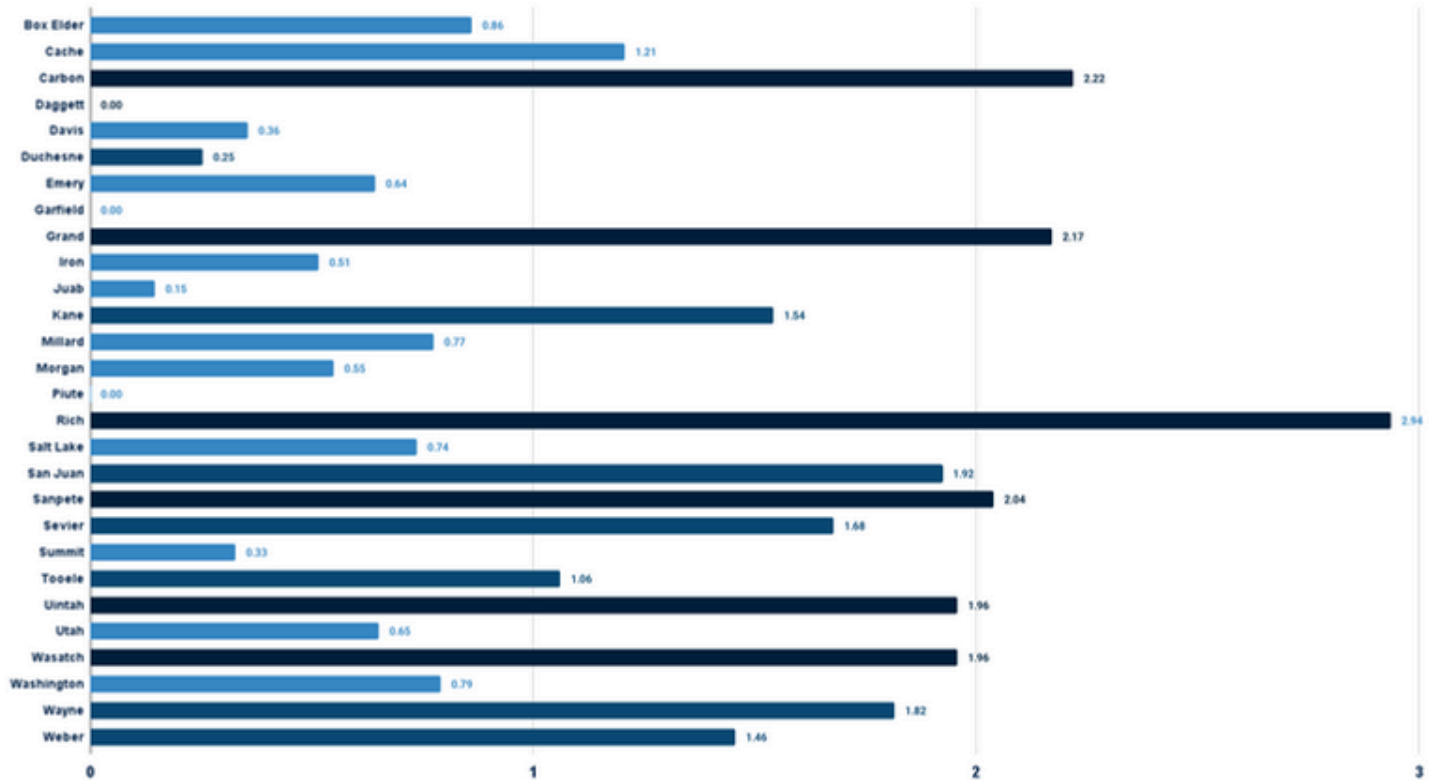
1. CACHE
2. SALT LAKE
3. UTAH
4. WEBER
5. DAVIS

Legend



WHERE?

2024 County Fatal Crash Rates Per 100 Million Vehicle Miles Traveled

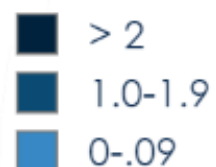


COUNTIES WITH THE HIGHEST FATAL CRASH RATES

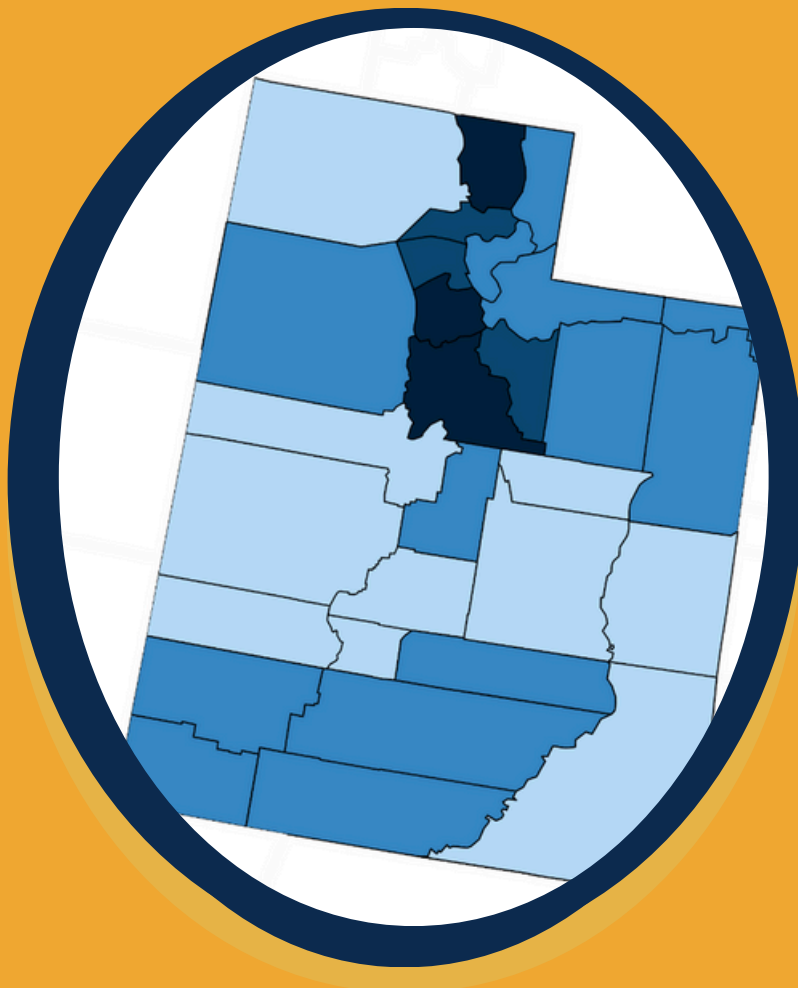
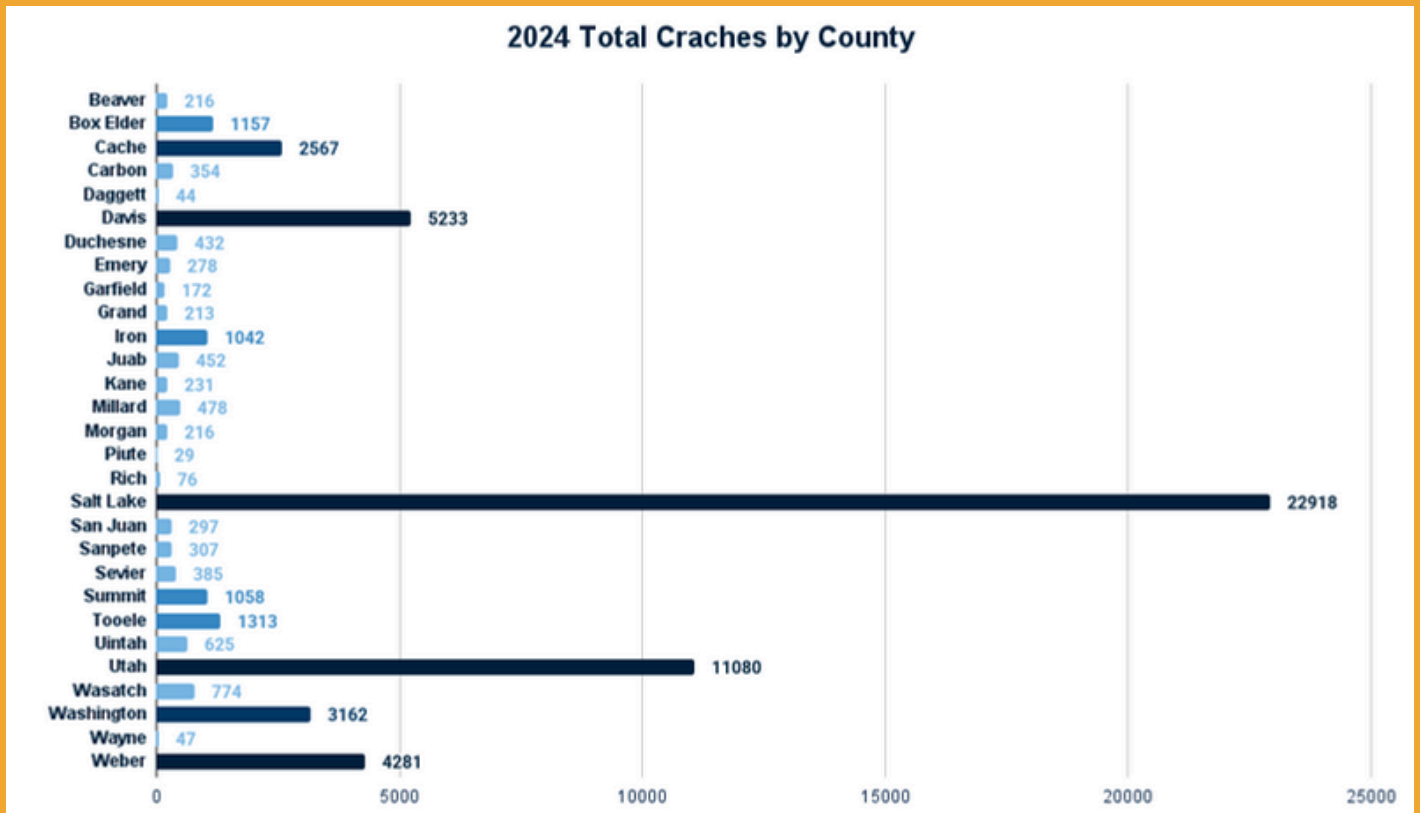
PER 100 MILLION
VEHICLE MILES TRAVELED

1. RICH
2. CARBON
3. GRAND
4. SANPETE
5. UINTAH

Legend



WHERE?



COUNTIES WITH THE HIGHEST CRASHES

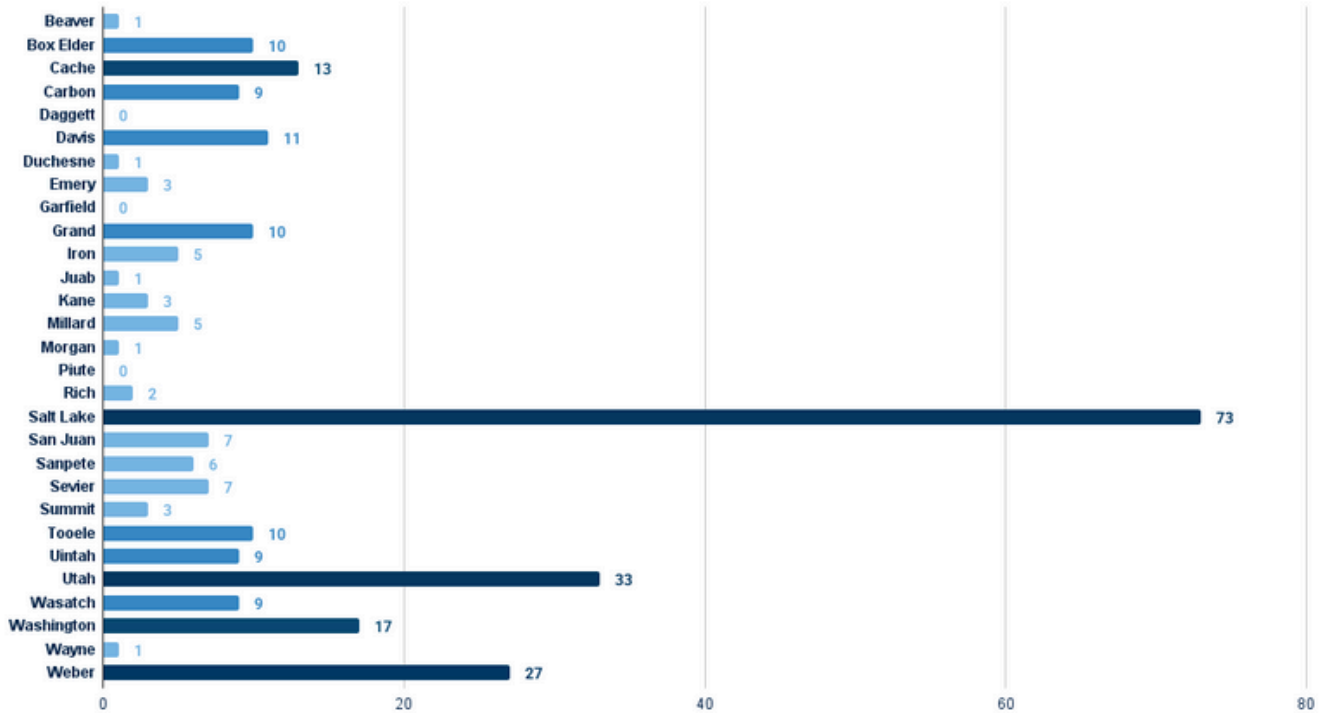
1. SALT LAKE
2. UTAH
3. DAVIS
4. WEBER
5. WASHINGTON

Legend

- > 2
- 1.0-1.9
- 0-.09

WHERE?

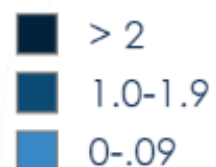
2024 Fatal Crashes by County



COUNTIES WITH THE HIGHEST FATAL CRASHES

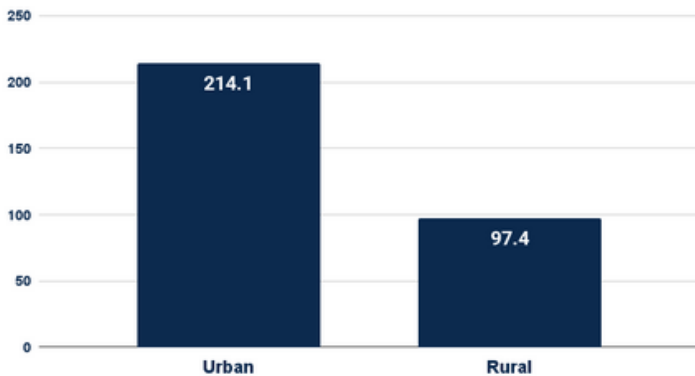
1. SALT LAKE
2. UTAH
3. WEBER
4. WASHINGTON
5. CACHE

Legend

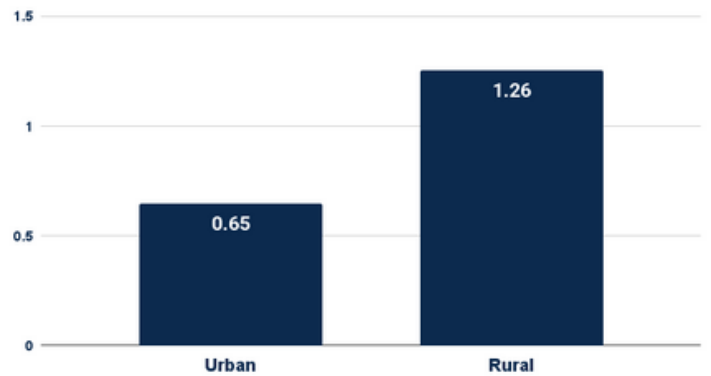


WHERE?

2024 Crash Rate Per 100 Million Vehicle Miles Traveled

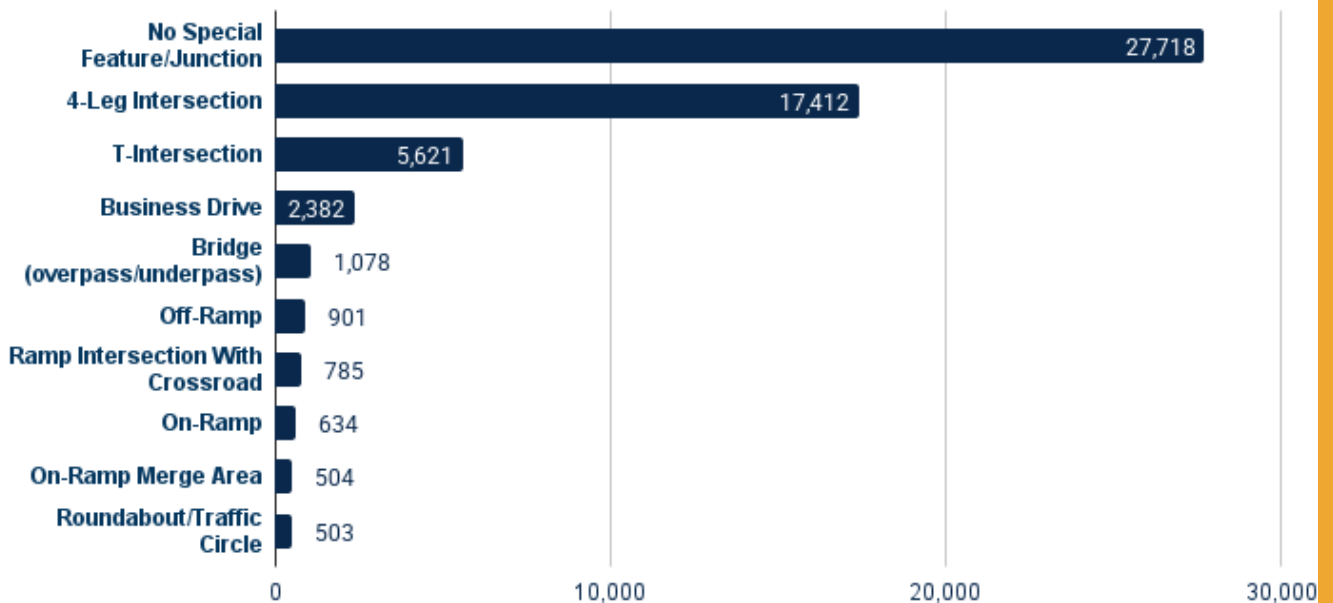


2024 Fatal Crash Rate Per 100 Million Vehicle Miles Traveled



RURAL COUNTIES HAVE A HIGHER FATAL CRASH RATE PER 100 MILLION VEHICLE MILES TRAVELED COMPARED TO URBAN COUNTIES.

Top Ten 2024 Crashes by Roadway Junction/Feature



47%

of crashes occurred at an intersection

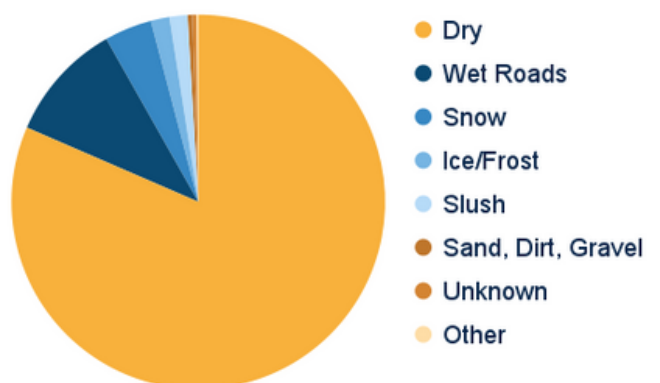


80%

of crashes occurred on dry roads

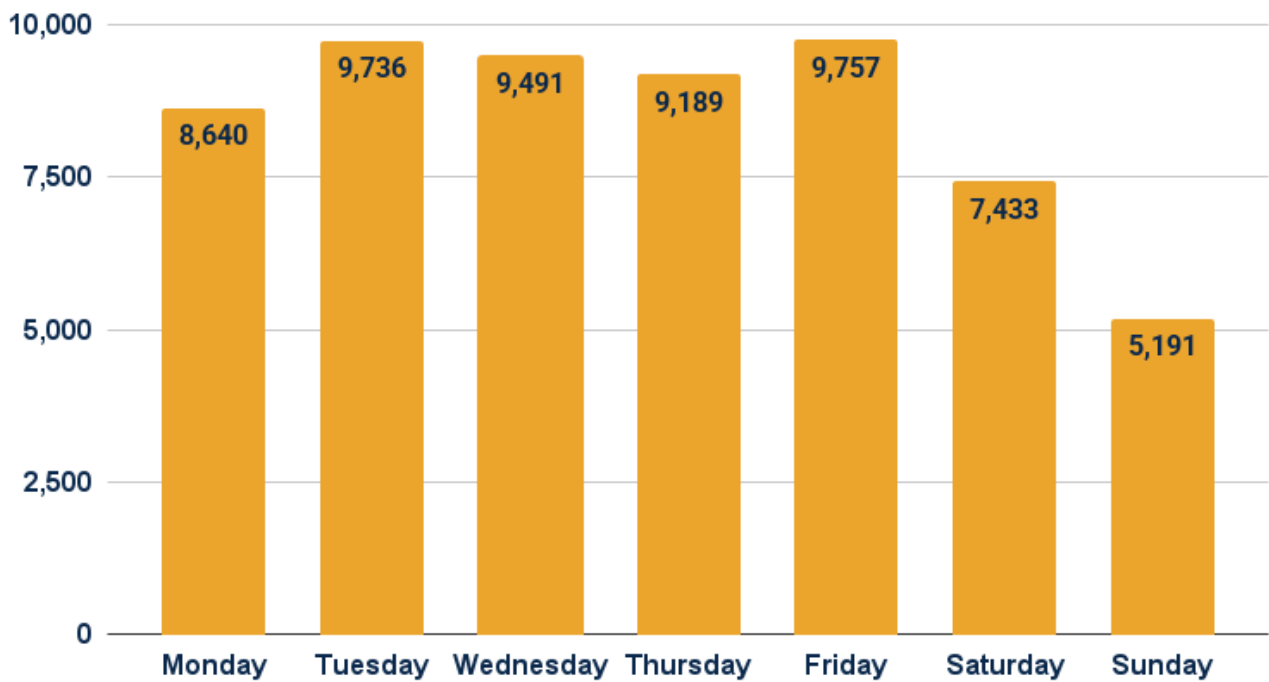


2024 Crashes by Roadway Surface Condition



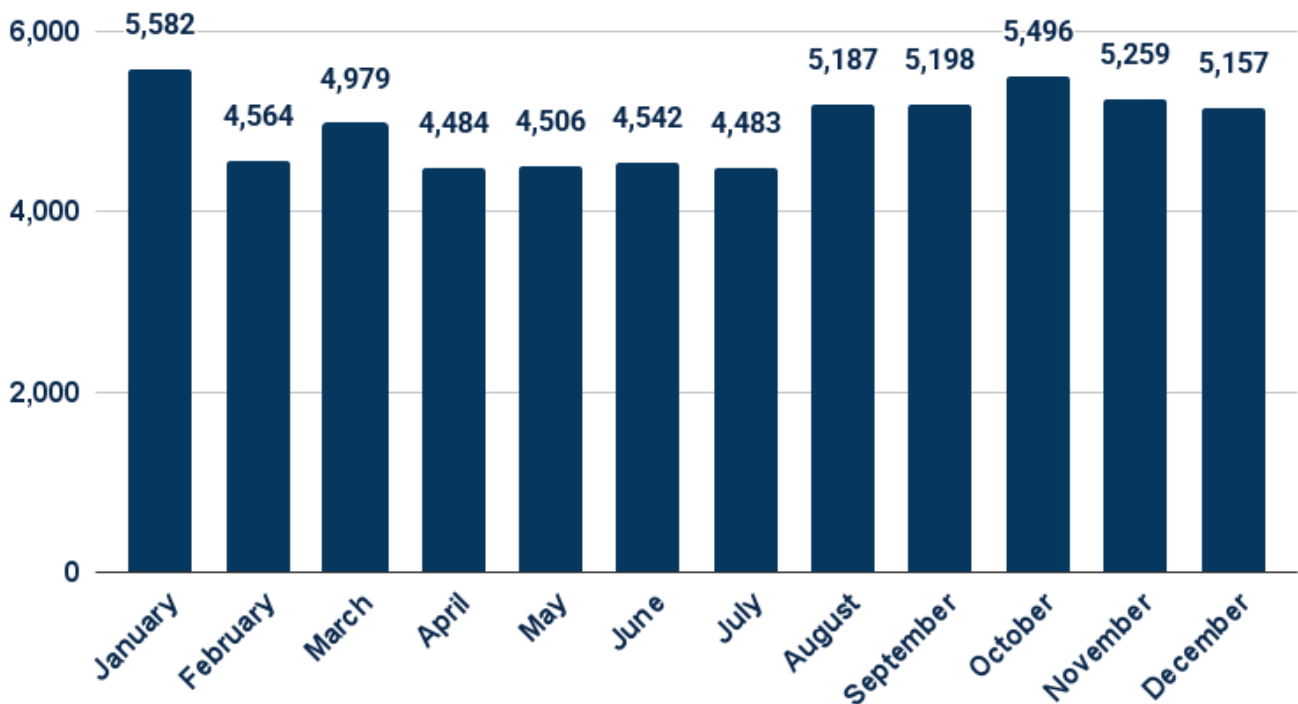
WHEN?

2024 Crashes by Day of Week



16.41% OF CRASHES OCCURRED ON A FRIDAY IN 2024

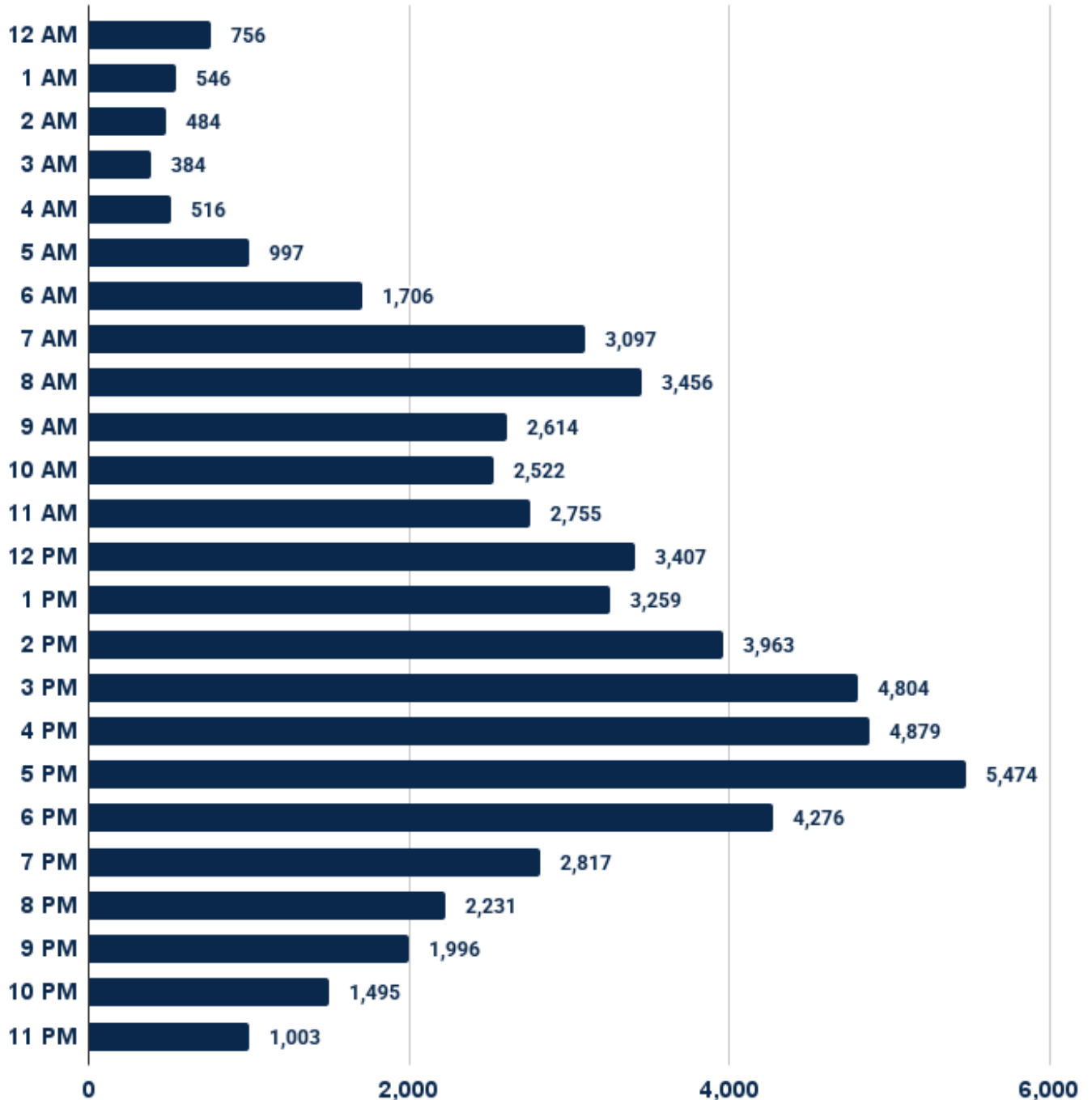
2024 Crashes by Month



9.39% OF CRASHES TOOK PLACE IN JANUARY OF 2024

WHEN?

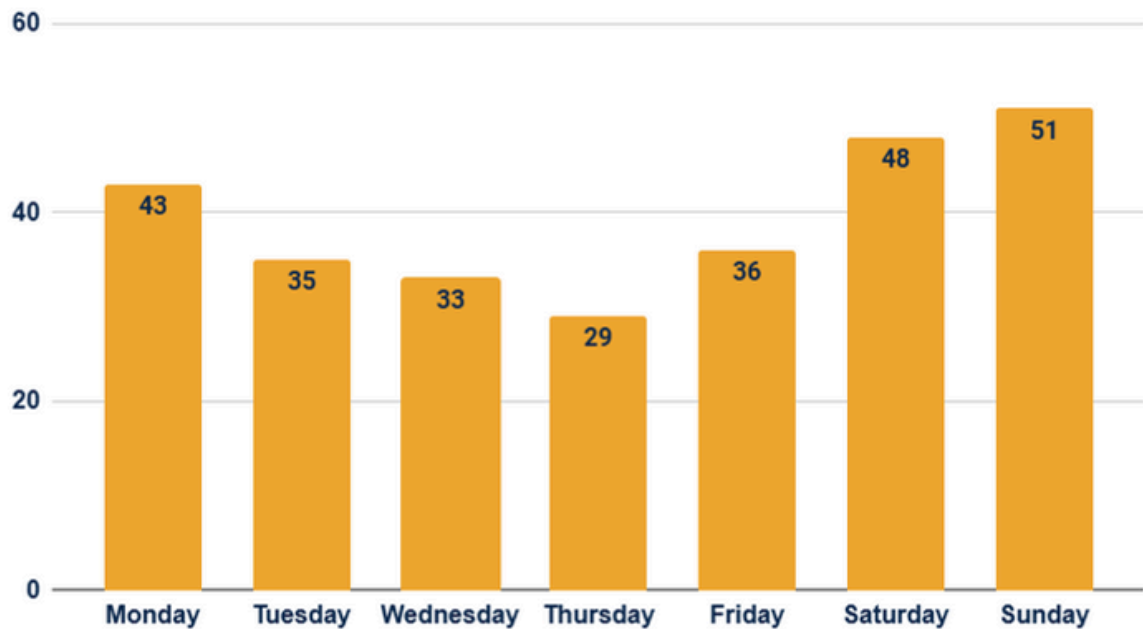
2024 Crashes by Time of Day



**9.20% OF CRASHES OCCURRED AT
5:00 PM IN 2024**

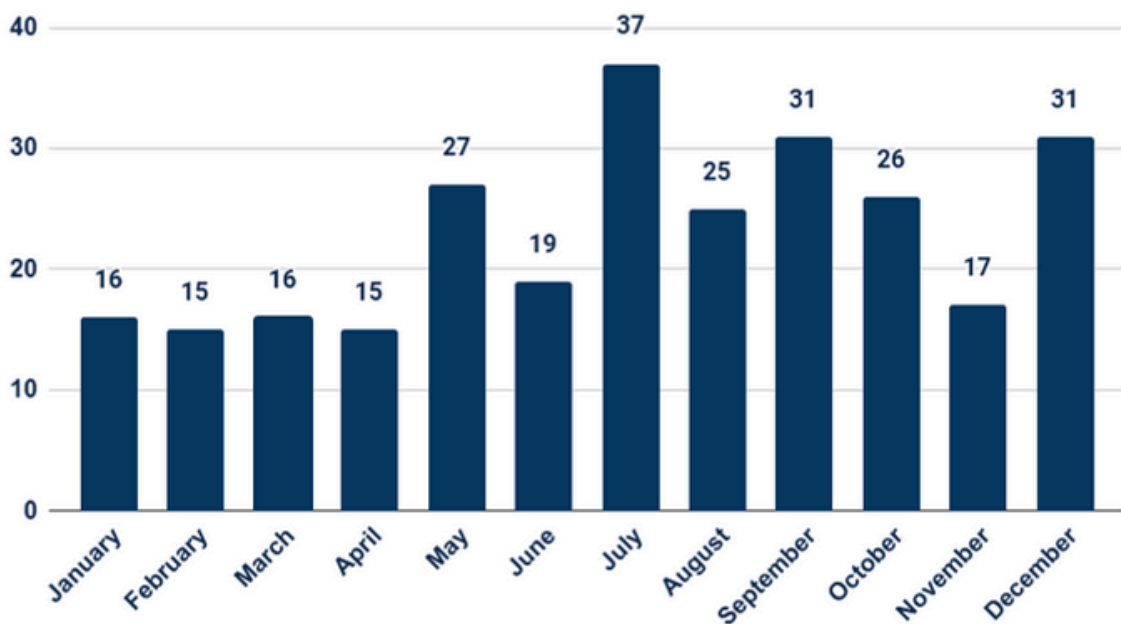
WHEN?

2024 Fatal Crashes by Day of Week



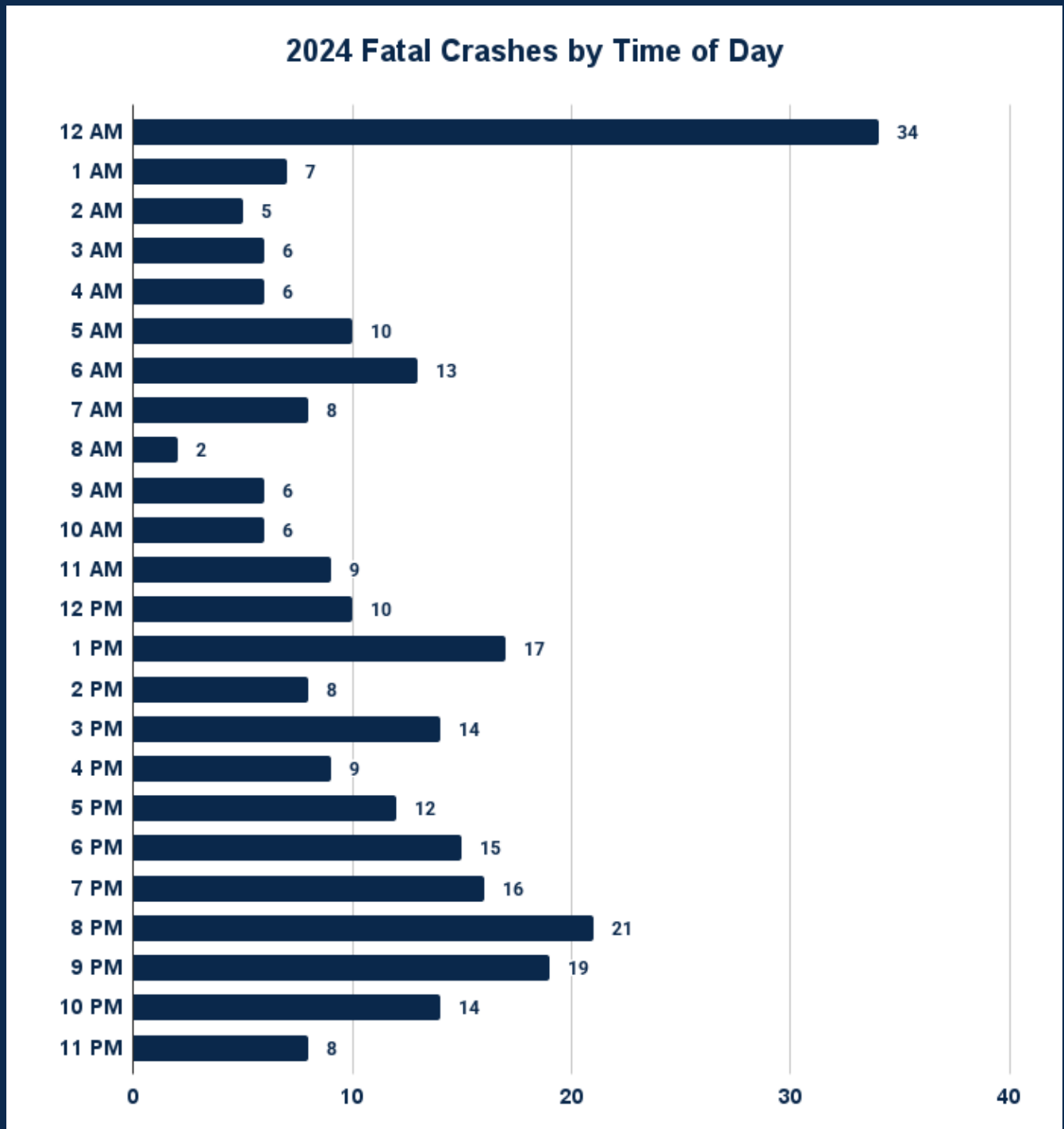
18.5% OF FATAL CRASHES OCCURRED ON A SUNDAY IN 2024

2024 Fatal Crashes by Month



13.45% OF FATAL CRASHES TOOK PLACE IN JULY OF 2024

WHEN?



**12.36% OF FATAL CRASHES OCCURRED AT
12:00 AM IN 2024**

WHY?

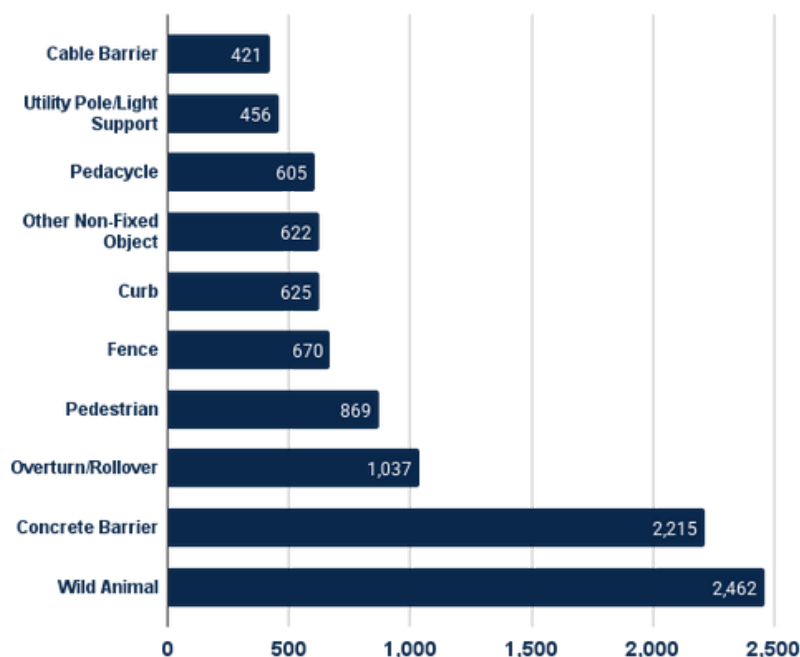
2024 DRIVER CONTRIBUTING CIRCUMSTANCES -ALL CRASHES-

1. Followed too Closely (19%)
2. Failed to Yield Right-of-Way (18%)
3. Failed to Keep in Proper Lane (12%)
4. Too Fast for Conditions (8%)
5. Unsafe Lane Change (6%)

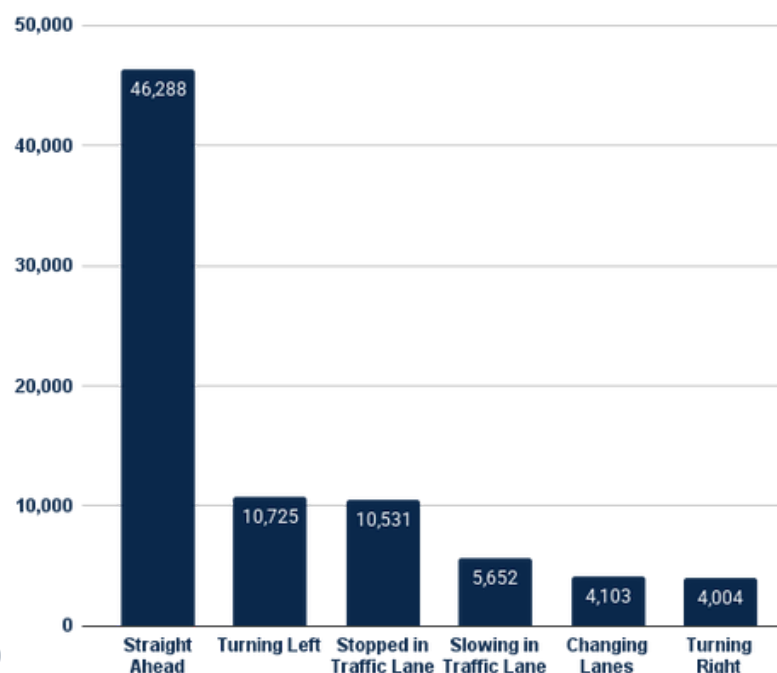
2024 DRIVER CONTRIBUTING CIRCUMSTANCES -FATAL CRASHES-

1. Failed to Keep in Proper Lane (27%)
2. Failed to Yield Right-of-Way (13%)
3. Ran Off Road (7%)
4. Too Fast for Conditions (7%)
5. Over-Correcting/Over-Steering (6%)

2024 Top 10 First Harmful Events



2024 Top 5 Pre-Crash Movements



WHY?

2024 Unrestrained Occupants in Crashes

2,150

Unrestrained
Occupants

711

Injured
Unrestrained
Occupants

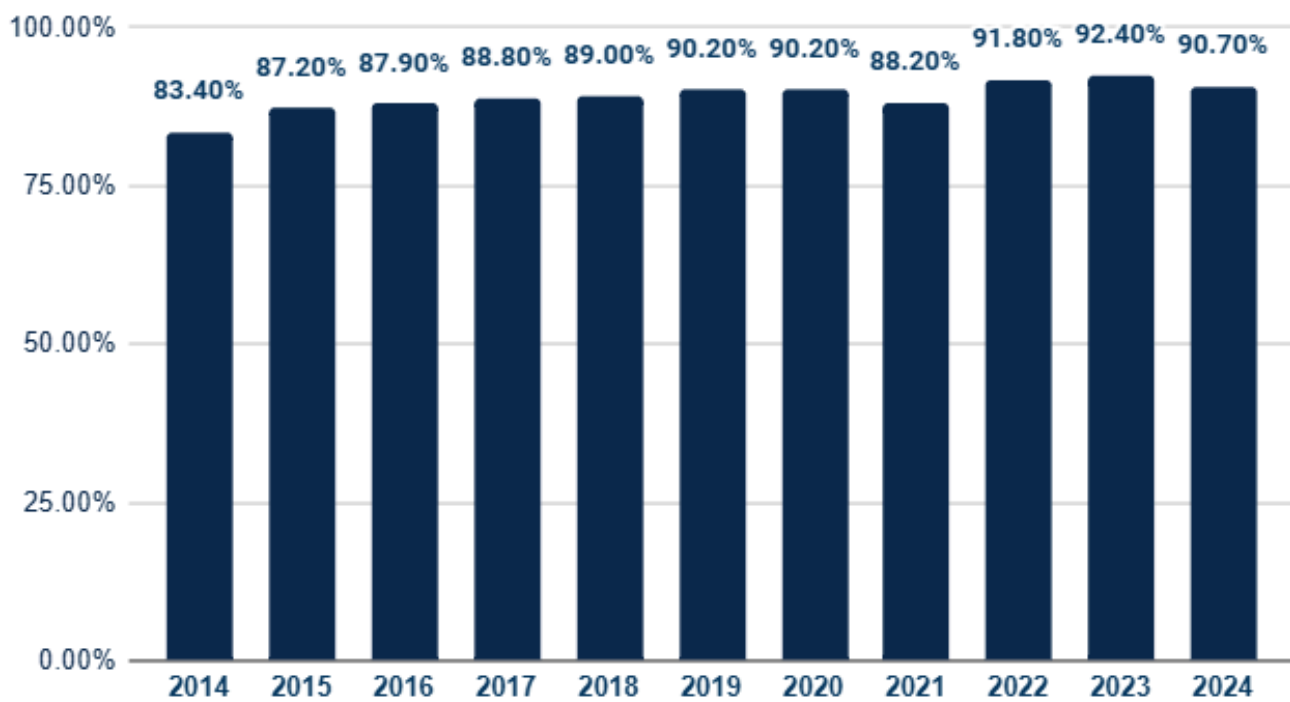
103

Unrestrained
Children
(age 0-12)

54

Fatally Injured
Unrestrained
Occupants

Observed Seat Belt Use Survey



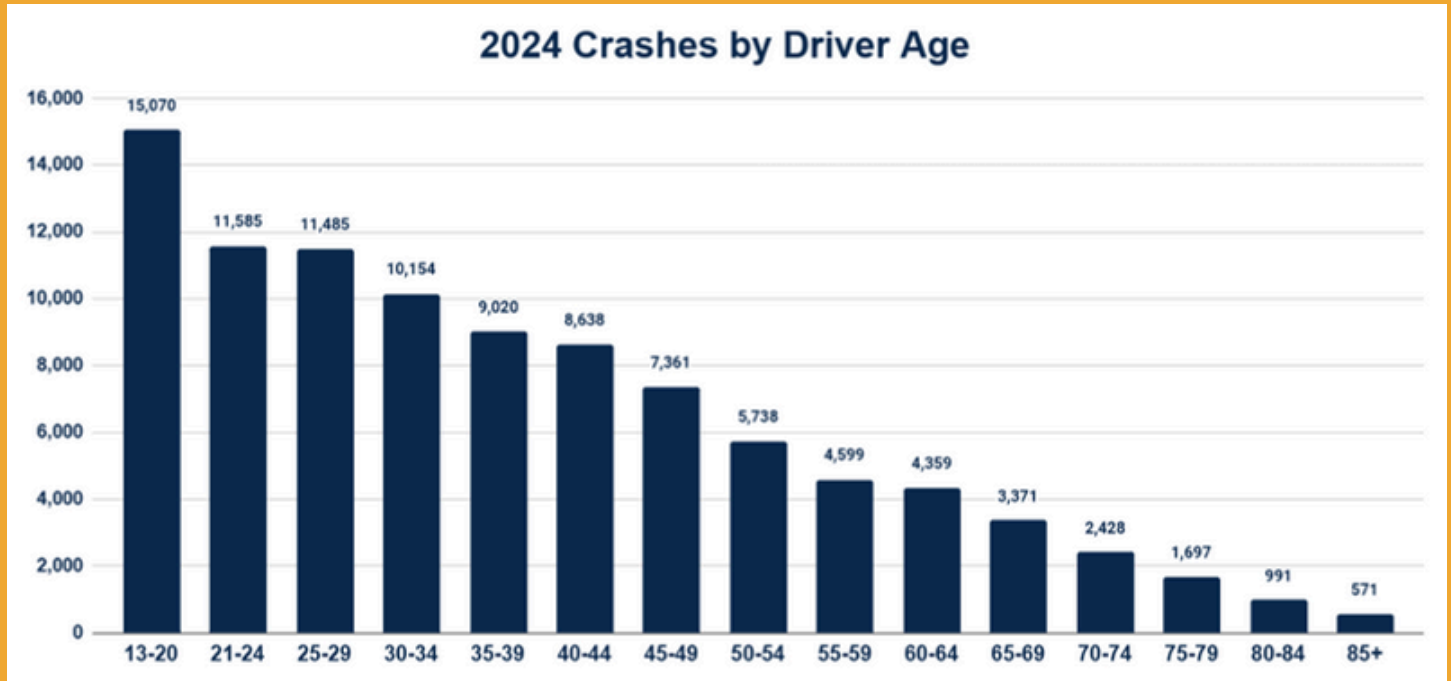
UTAH'S SEAT BELT USE RATE REACHED ITS HIGHEST EVER IN 2023

OVERALL, SEAT BELT USE IS HIGHER IN URBAN COUNTIES COMPARED TO RURAL COUNTIES.

FEMALE OCCUPANTS BUCKLED UP MORE OFTEN THAN MALE OCCUPANTS.

PICKUP TRUCK OCCUPANTS HAD THE LOWEST SEAT BELT USAGE RATE AT 85%.

WHO?



Teenage drivers account for 23% of total crashes, which is higher than any other age group.

People Involved in Crashes in 2024	
Drivers	58,749
Passengers	17,679
Motorcycle Drivers	1,291
Motorcycle Passengers	70
Pedestrians	883
Bicyclists	604
Scooter/Skater	149

2024 FATALITIES

Driver	125	45%
Passenger	48	17%
Motorcycle Driver	53	19%
Motorcycle Passenger	0	0%
Pedestrian	42	15%
Bicyclist	7	3%
Scooter/Skater	2	1%

Fatalities by Gender

73%

MALE



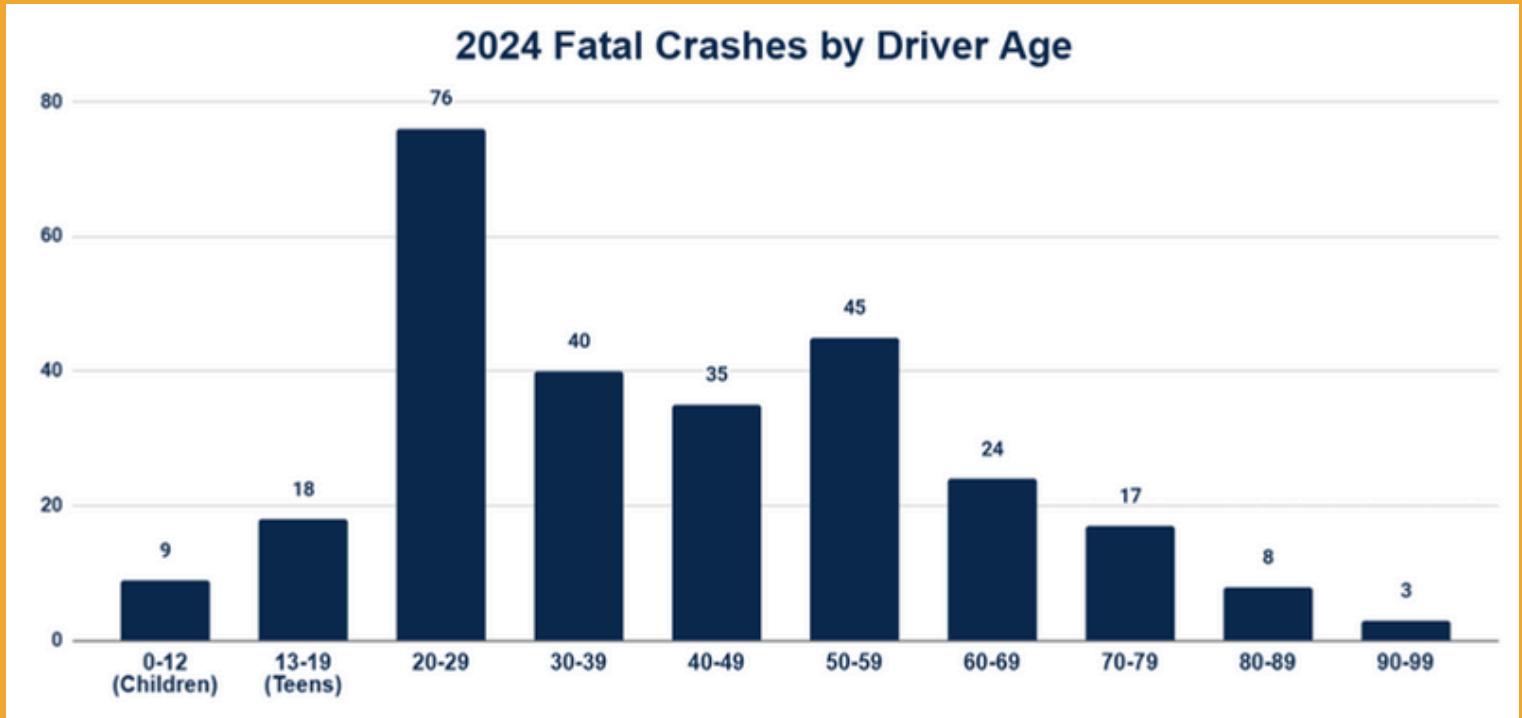
27%

FEMALE



IN 2024, FOR EVERY 4 FATALITIES, 3 WERE
MALE AND 1 WAS FEMALE.

FATALITIES



In 2024....

8%

of deaths involved
**Aggressive
Driving/Road
Rage**

31%

of deaths were
Speed Related

20%

of deaths involved a
Impaired Driver
(BAC 0.05 & above)

37%

of occupant
deaths were
Unrestrained

2%

of deaths involved a
**Wrong-Way
Driver**

8%

of deaths involved
**Distracted
Driving**